

LED LIGHTSHOW INSTRUCTIONS

Congratulations! You are now the proud owner of a LED LIGHTSHOW. Please read the directions carefully before use.

SAFETY WARNING: Remove all plastic fasteners and tags. These are part of the packaging and should be discarded.

SAVE THESE INSTRUCTIONS — This manual contains important safety and operating instructions for power units.

WARNING

ELECTRIC PRODUCT. Keep away from children. Not recommended for children under 3 years of age. As with all electrical products, precautions should be observed during handling and use to reduce the risk of electric shock. If the supply cord is damaged, it must be replaced by the manufacturer, its service agent or similarly qualified persons in order to avoid a hazard.

WARNING

Strobe lights have been known to trigger seizures in people with photosensitive epilepsy.

IMPORTANT SAFETY INSTRUCTIONS WHEN USING ELECTRICAL PRODUCTS, BASIC PRECAUTIONS SHOULD ALWAYS BE FOLLOWED INCLUDING THE FOLLOWING:

READ AND FOLLOW ALL SAFETY INSTRUCTIONS

1. Do not use seasonal products outdoors unless marked suitable for indoor and outdoor use. When products are used in outdoor applications, connect the product to a Ground Fault Circuit Interrupting (GFCI) outlet. If one is not provided, contact a qualified electrician for proper installation.
2. This seasonal use product is not intended for permanent installation or use.
3. Do not mount or place near gas or electric heaters, fireplace, candles or other similar sources of heat.
4. Do not secure the wiring of the product with staples or nails, or place on sharp hooks or nails.
5. Do not let lamps rest on the supply cord or on any wire.
6. Unplug the product when leaving the house, when retiring for the night, or if left unattended.
7. This is an electric product-not a toy! To avoid risk of fire, burns, personal injury and electric shock it should not be played with or placed where small children can reach it.
8. Do not use this product for other than its intended use.
9. Do not hang ornaments or other objects from cord, wire, or light string.
10. Do not close doors or windows on the product or extension cords as this may damage the wire insulation.
11. Do not cover the product with cloth, paper or any material not part of the product when in use.
12. This product employs overload protection (fuse). A blown fuse indicates an overload or short-circuit situation. If the fuse blows, unplug the product from the outlet. Also unplug any additional strings or products that may be attached to the product. Replace the fuse as per the user servicing instructions(follow product marking for proper fuse rating)and check the product. If the replacement fuse blows, a short-circuit may be present and the product should be discarded.
13. Read and follow all instructions that are on the product or provided with the product.

CAUTION: To reduce the risk of fire and electric shock:

1. Do not install on trees having needles, leaves or branch coverings of metal or materials which look like metal; and
2. Do not mount or support wires in a manner that can cut or damage wire insulation.

SAVE THESE INSTRUCTIONS

USE AND CARE INSTRUCTIONS

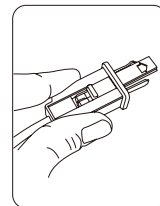
1. When the product is placed on a live tree, the tree should be well maintained and fresh. Do not place on live trees in which the needles are brown or break off easily. Keep the tree holder filled with water.
2. If the product is placed on a tree, the tree should be well secured and stable.

3. Before using or reusing, inspect product carefully. Discard any products that have cut, damaged, or frayed wire insulation or cords, cracks in the lampholders or enclosures, loose connections, or exposed copper wire.
4. When storing the product, carefully remove the product from wherever it is placed, to avoid any undue strain or stress on the product conductors, connections, and wires.
5. When not in use, store neatly in a cool, dry location protected from sunlight.

USER SERVICING INSTRUCTIONS

To replace the fuse:

1. Grasp plug and remove from the receptacle or other outlet device. Do not unplug by pulling on cord.
2. Open fuse cover. Slide open fuse access cover on top of attachment plug towards blades.
3. Remove fuse carefully. Turn fuseholder over to remove fuse.
4. **RISK OF FIRE.** Replace fuse only with 3 Amp, 125Volt fuse (provided with product.)
5. Close fuse cover. Slide closed the fuse access cover on top of attachment plug.
6. **RISK OF FIRE.** Do not replace attachment plug. Contains a safety device (fuse) that should not be removed. Discard product if the attachment plug is damaged.



CAUTION

This string is rated 24 Watts (0.2Amps), do not overload. Connect other Lighting Strings or decorative outfits end-to-end up to a maximum of 216 Watts (1.8 Amps) total.

If connecting to a lighting string that does not have a wattage (W) rating (found on the tag within 6 inches of the plug), Calculate The wattage (W) as follows: Multiply the current (0.2A) which is on the flag type tag Within 6 inches of the plug, by 120.

For example, string is rated 120V, 60Hz, 0.2Amps, $0.2 \times 120 = 24$ Watts.

Add the wattage of each light string together for a total of 216 Watts or less. (Do not exceed 216 Watts)

Total amount of wattage that can be connected $216W - 24W = 192W$.

CAUTION

To reduce the risk of fire or electric shock, do not attempt to replace lamps or modify string.

FOR INDOOR AND OUTDOOR USE

NOTE: This item is not a toy and should be used for decorative purposes only.

WARNING

This device complies with Part 15 of the FCC Rules. Operation is subject to the following two conditions: (1) this device may not cause harmful interference, and (2) this device must accept any interference received, including interference that may cause undesired operation.

CAUTION: Changes or modifications not expressly approved by the party responsible for compliance could void the user's authority to operate the equipment.

NOTE: This equipment has been tested and found to comply with the limits for a Class B digital device, pursuant to Part 15 of the FCC Rules. These limits are designed to provide reasonable protection against harmful interference in a residential installation. This equipment generates, uses, and can radiate radio frequency energy and, if not installed and used in accordance with the instructions, may cause harmful interference to radio communications. However, there is no guarantee that interference will not occur in a particular installation. If this equipment does cause harmful interference to radio or television reception, which can be determined by turning the equipment off and on, the user is encouraged to try to correct the interference by one or more of the following measures:

- Reorient or relocate the receiving antenna.
- Increase the distance between the equipment and receiver.
- Connect the equipment into an outlet on a circuit different from that to which the receiver is connected.
- Consult the dealer or an experienced radio/TV technician for help important announcement

Important Note:

Radiation Exposure Statement

This equipment complies with FCC radiation exposure limits set forth for an uncontrolled environment. This equipment should be installed and operated with minimum distance 20cm between the radiator and your body.

This transmitter must not be co-located or operating in conjunction with any other antenna or transmitter.

THESE INSTRUCTIONS ARE FOR THESE ITEM NUMBERS

112851

112867

112855

112875

112873

113687

114038

QD ID:91274



Visit WWW.GEMMY.COM for more information.

©2018 GEMMY INDUSTRIES CORP.

117 WRANGLER DRIVE. SUITE 100

COPPELL, TX 75019 U.S.A.

1 (877) 250-9032

MADE IN CHINA / PRINTED IN CHINA