

THE BEST BATH OR SHOWER EXPERIENCE? THE ONE NOBODY INTERRUPTS.

Thank you for buying an American Standard bath or shower product.

We're so grateful you did, and you will be too. Not just while you're waking up each morning, but also every time a dirty gardener, sweaty soccer player, or muddy dog gets cleaned up. How do we know? Just like you, we've lived with that same beautiful chaos called life for almost 150 years. We believe that while every home should appreciate in value, we never forget the sentimental value that grows from enjoying life in the heart of home—your kitchen and bath. That's why we love your stories and ideas; they help us innovate with products that make your life easier.

Or, visit **americanstandard-us.com/bathroom/bath-drains** to watch video, view/download installation manuals or learn more about your product.

Have a question or need help on install?

For questions or help on installation call us at **800-442-1902**.

For a copy of our warranty in additional languages,
please visit Americanstandard.com

American Standard

OWNERS MANUAL

Mainstream®

Drain Kit

1699500.020

INSTALLATION INSTRUCTIONS

Thank you for selecting American Standard – the benchmark of fine quality for over 150 years. To ensure this product is installed properly, please read these instructions carefully before you begin. Certain installations may require professional help. Also be sure your installation conforms to local codes.

INSTALLATION PREPARATION

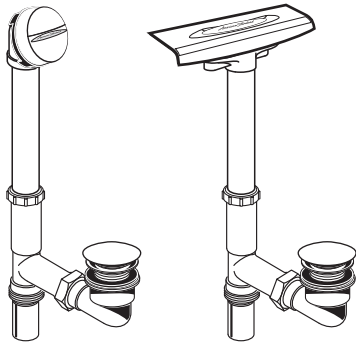
- Please unpack carefully and identify all parts needed for installation by using the Box Contents page as a reference. Inspect the product and report any damages or missing parts immediately to customer care by calling 800-442-1902.
- This Mainstream Drain Kit was developed to be installed on Mainstream Whirlpools 2948LC-RHO / 2948LC-LHO and 2949LC. If installing on a different tub, you may need additional hardware and tools to complete the installation.
- Wear protective equipment during installation to avoid injury.
- Please keep these instructions for after care and customer service details.



BEFORE YOU BEGIN

Inspect your product thoroughly before installing. Take extra care in handling surfaces of the bath and use only non-abrasive cloths to avoid scratching. Observe all local plumbing and building codes.

INSIDE THE BOX



BOX CONTENTS

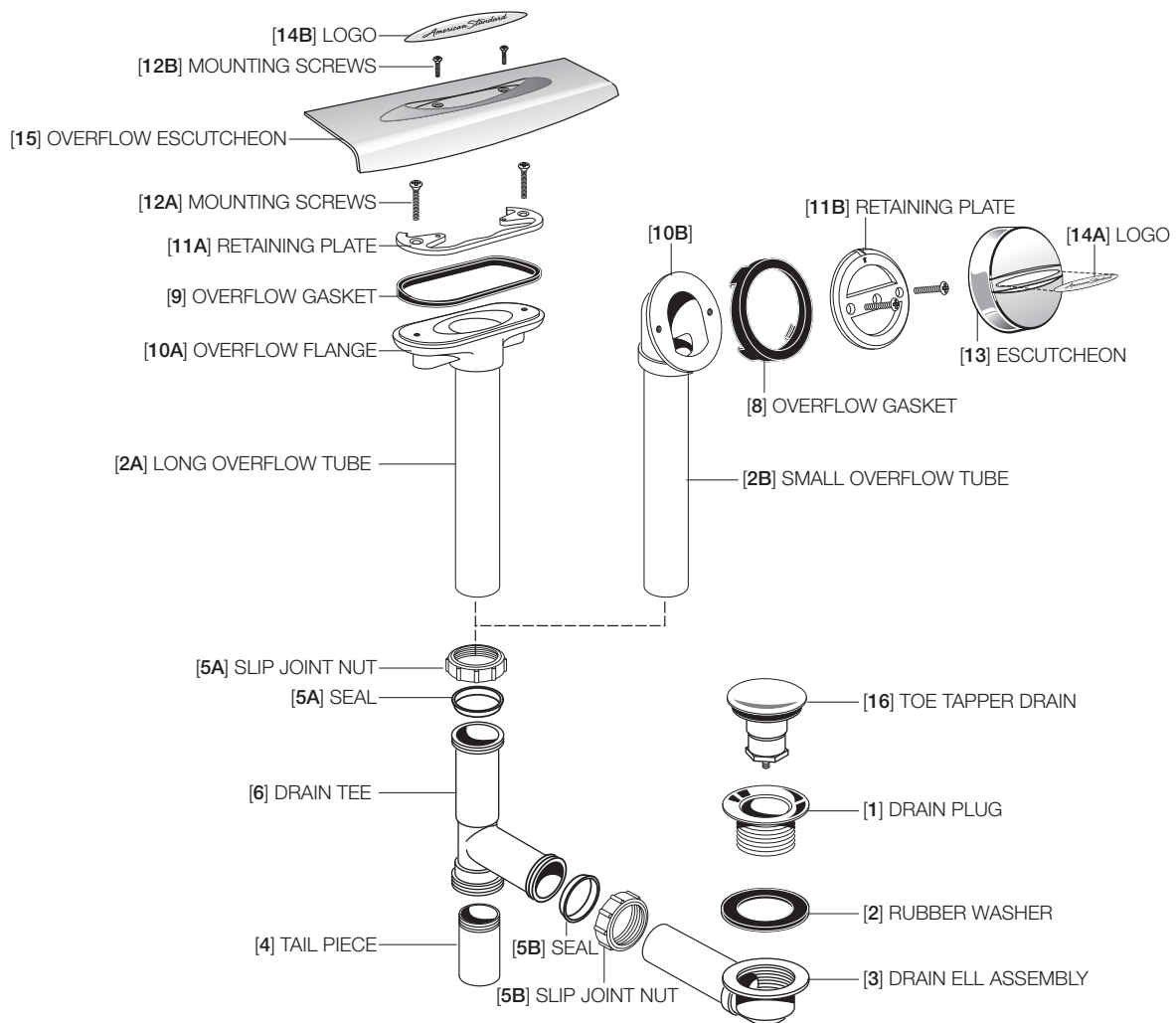


Image shown may vary from product purchased.

American Standard

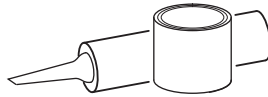
RECOMMENDED TOOLS AND MATERIALS

Installation steps will indicate which tools should be used with associated letter



Channel Locks

A



Plumbers' Putty or Caulking

B



Phillips Screwdriver

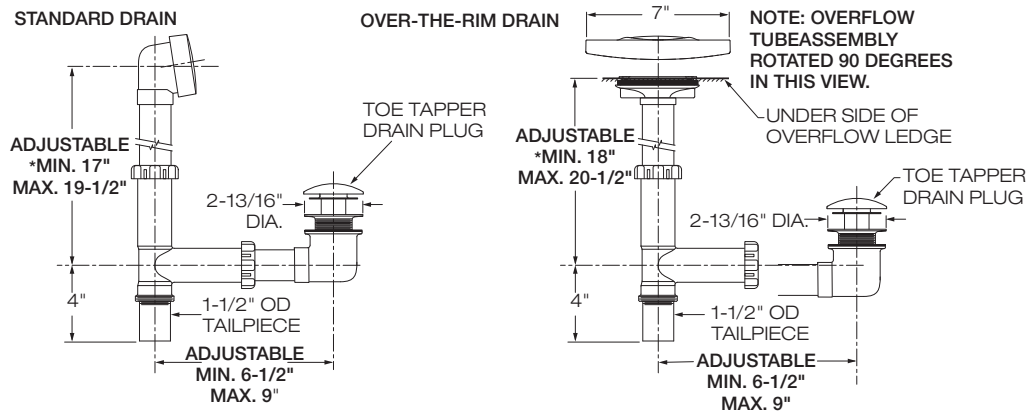
C



Safety Equipment

D

ROUGH-IN DIMENSIONS



DRAIN NUMBER	BATH/WHIRLPOOL MODEL	OVERFLOW TYPE
1699500.020	2949LC Mainstream 60x32 6 Jet Drop-in Whirlpool	STANDARD
1699500.020	2948LC-RHO.020 Mainstream 60x32 8 Jet Whirlpool, RHO	OVER-THE-RIM
1699500.020	2948LC-LHO.020 Mainstream 60x32 8 Jet Whirlpool, LHO	OVER-THE-RIM

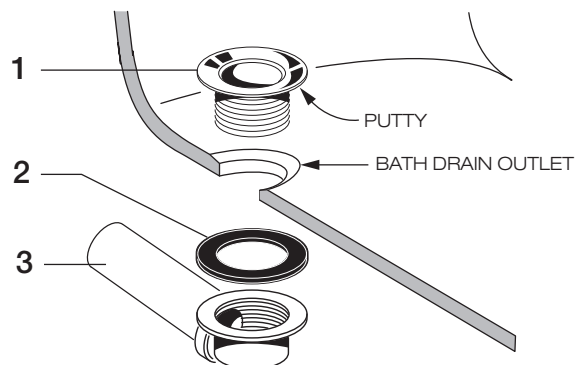
*NOTE: A smaller dimension can be accommodated by cutting pipe.

American Standard

1

INSTALL DRAIN PLUG AND ELL (STANDARD AND OVER-THE-RIM DRAINS)

- 1a. Apply putty to underside of DRAIN PLUG [1] and drop into drain outlet.
- 1b. Slip RUBBER WASHER [2] on from below and thread DRAIN PLUG [1] into DRAIN ELL ASSEMBLY [3].



2

INSTALL OVERFLOW ASSEMBLY AND DRAIN TEE

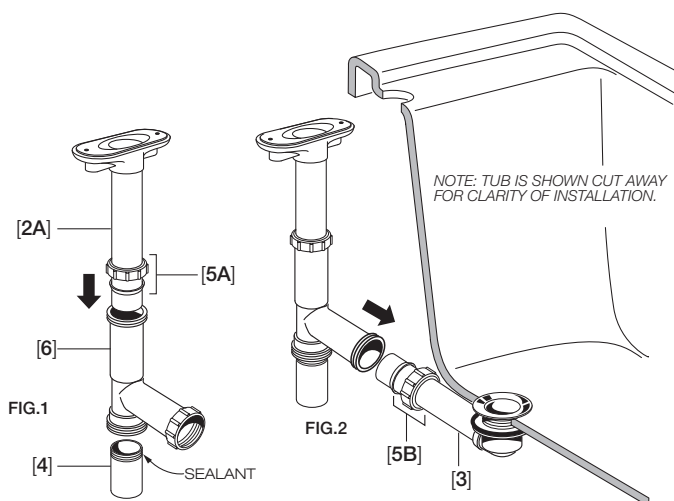
OVER-THE-RIM DRAIN

- 2a. Loosen SLIP JOINT NUT & SEAL [5A] and install onto LONG OVERFLOW TUBE [2A]. Install LONG OVERFLOW TUBE ASSEMBLY [2A] into the appropriate leg of the DRAIN TEE [6]. Apply sealant to threads of TAIL-PIECE [4] and thread into DRAIN TEE [6].

FIG. 1

- 2b. Loosen SLIP JOINT NUT & SEAL [5B] and install onto DRAIN ELL ASSEMBLY [3]. Install DRAIN ELL ASSEMBLY [3] into the horizontal leg of the DRAIN TEE [6].

FIG. 2

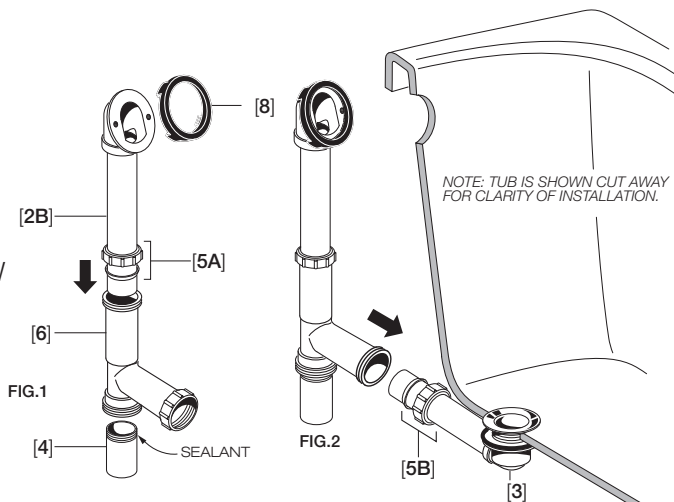


STANDARD DRAIN

- 2c. Loosen SLIP JOINT NUT & SEAL [5A] and install onto SMALL OVERFLOW TUBE [2B]. Install SMALL OVERFLOW TUBE ASSEMBLY [2B] into the appropriate leg of the DRAIN TEE [6]. Apply sealant to threads of TAIL-PIECE [4]. Install OVERFLOW GASKET [8] to OVERFLOW TUBE ASSEMBLY [2B]. (Adjust OVERFLOW GASKET [8] to contour of tub. FIG. 1

- 2d. Loosen SLIP JOINT NUT & SEAL [5B] and install onto DRAIN ELL ASSEMBLY [3]. Install DRAIN ELL ASSEMBLY [3] into the horizontal leg of the DRAIN TEE [6].

FIG. 2

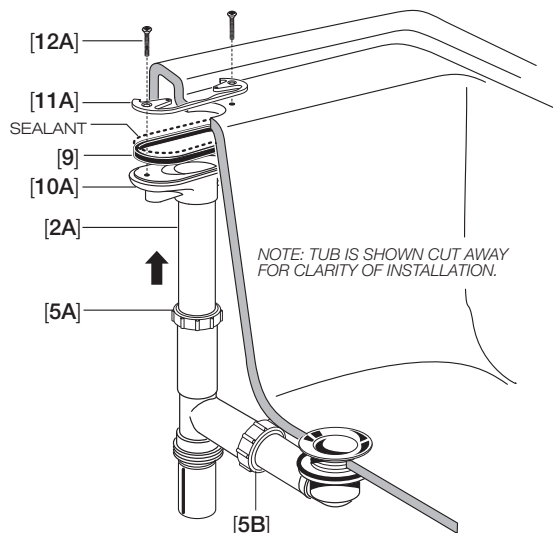


3

SECURE OVERFLOW ASSEMBLY TO TUB

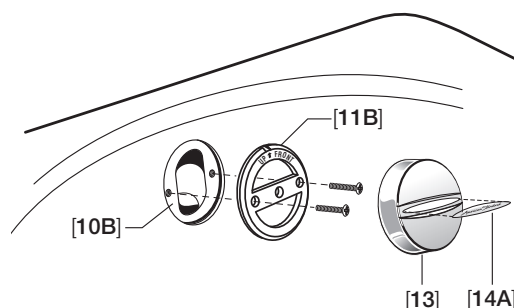
OVER-THE-RIM DRAIN

- 3a. Install OVERFLOW GASKET [9] onto OVERFLOW FLANGE [10A] using two strips of double-face tape (included).
- 3b. Apply a bead of silicone sealant to upper edge of OVERFLOW GASKET [9].
- 3c. Push OVERFLOW TUBE ASSEMBLY [2A] up flush against underside of ledge.
- 3d. Install and align mounting holes in RETAINING PLATE [11A] with holes in OVERFLOW FLANGE [10A]. Insert MOUNTING SCREWS [12A] through RETAINING PLATE [11A] into OVER FLOW FLANGE [10A].
NOTE: RETAINING PLATE [11A] must be installed as shown with open side facing out.
- 3e. Tighten SLIP JOINT NUTS [5A, 5B] to make water tight connections.



STANDARD DRAIN

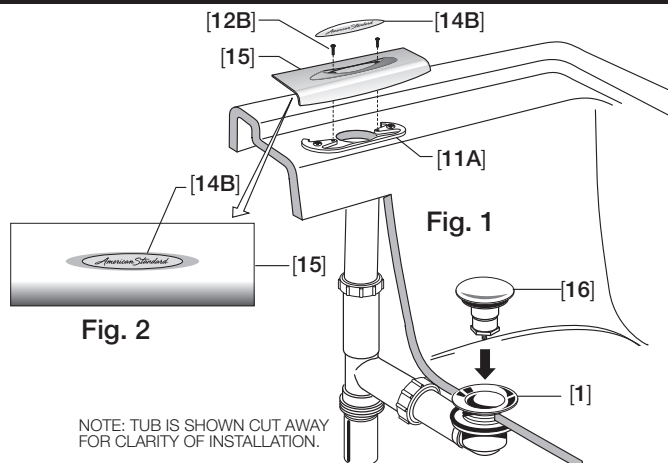
- 3f. Align the holes in the RETAINING PLATE [11B] with those in the OVERFLOW FLANGE [10B]. Install screws, tighten snugly (do not over tighten). The overflow gasket (behind tub wall) will begin to seal as the RETAINING PLATE [11B] becomes tighter. The overflow gasket can be rotated for desired fit.
- 3g. Align the ESCUTCHEON [13] with the RETAINING PLATE [11B] and push onto RETAINING PLATE [11B] until the ESCUTCHEON [13] snaps into place.
- 3h. Peel protective tape from the AMERICAN STANDARD LOGO [14A]. Align LOGO [14A] and press into place.
- 3i. When you are satisfied with the overall fit of the drain, go back and tighten all joints to make a water tight seal.



4

INSTALL OVERFLOW ASSEMBLY AND DRAIN TEE (OVER-THE-RIM DRAIN)

- 4a. Install OVERFLOW ESCUTCHEON [15] onto RETAINING PLATE [11A]. Use MOUNTING SCREWS [12B] to secure OVERFLOW ESCUTCHEON [15]. **Fig. 1**
- 4b. Peel protective tape from the AMERICAN STANDARD LOGO [14B]. Align LOGO [14B] and press into place. **Fig. 2**
- 4c. Thread TOE TAPPER DRAIN PLUG [16] into DRAIN PLUG [1].

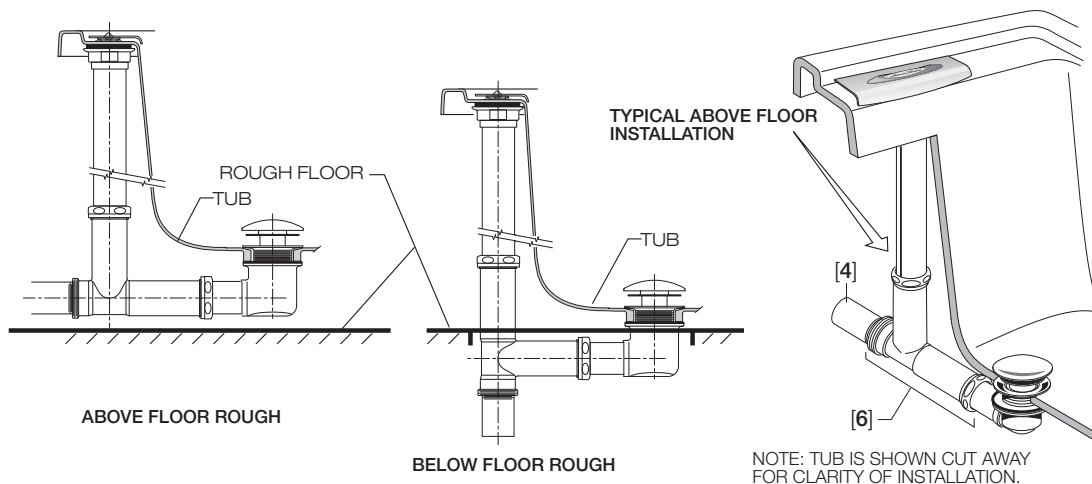


ABOVE FLOOR OUTLET INSTALLATION

OVER-THE-RIM DRAIN

NOTE: Waste outlet can be installed either above the floor or below floor. **Fig.1**

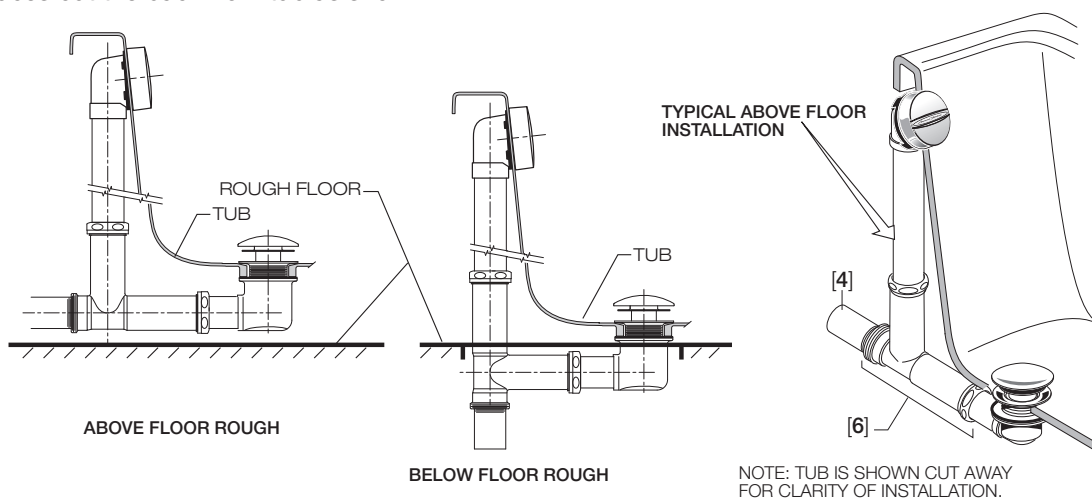
5a. For above floor drain outlet, rotate DRAIN TEE ASSEMBLY [6] 90 degrees so TAILPIECE [4] faces out the back from tub as shown.



STANDARD DRAIN

NOTE: Waste outlet can be installed either above the floor or below floor. **Fig.1**

5b. For above floor drain outlet, rotate DRAIN TEE ASSEMBLY [6] 90 degrees so TAILPIECE [4] faces out the back from tub as shown.



WARRANTY

ONE YEAR LIMITED WARRANTY

If inspection of this AS America, Inc. ("American Standard®") plumbing product, within one year after its initial purchase, confirms that it is defective in materials or workmanship, American Standard will repair or, at its option, exchange the product for a similar model.

This limited warranty applies only to the original purchaser and installation of these products. In the event of a limited warranty claim, proof of purchase will be required – **save sales receipt**.

This limited warranty does not apply to local building code compliance. Since local building codes vary considerably, the purchaser of this product should check with a local building or plumbing contractor to ensure local code compliance before installation.

This limited warranty is void if the product has been moved from its initial place of installation; if it has been subjected to faulty maintenance, abuse, misuse, accident or other damages; if it was not installed in accordance with American Standard's instructions; or if it has been modified in a manner inconsistent with the product as shipped by American Standard.

American Standard's option to repair or exchange the product under this limited warranty does not cover any labor or other costs of removal or installation. IN NO EVENT WILL American Standard BE LIABLE FOR THE COST OF REPAIR OR REPLACEMENT OF ANY INSTALLATION MATERIALS, INCLUDING BUT NOT LIMITED TO, TILES, MARBLE, ETC. American Standard will not be responsible for any other incidental or consequential damages attributable to a product defect or to the repair or exchange of a defective product, all of which are expressly excluded from this limited warranty. This limited warranty does not cover any liability for consequential or incidental damages, all of which are hereby expressly disclaimed, or the extension beyond the duration of this limited warranty or any implied limited warranties, including those of merchantability or fitness for an intended purpose. (Some states or provinces do not allow the exclusion or limitation of implied limited warranties, so this exclusion may not apply to you.)

This limited warranty gives you specific legal rights. You may have other statutory rights that vary from state to state or from province to province, in which case this limited warranty does not affect such statutory rights.

OBTAINING WARRANTY SERVICE

If you believe that you have a warranty claim, contact American Standard, either through an authorized AS America, Inc. dealer or re-seller, by writing to the addresses below, or visiting the website below:

UNITED STATES

American Standard Brands
30 Knightsbridge Road, Suite 301
Piscataway, New Jersey 08854
Attention: Director of Customer Care
For residents of the United States,
warrantyinformation may also be obtained
by calling the following toll free number:
(800) 442-1902
www.americanstandard.com

CANADA

LIXIL Canada, Inc.
5900 Avebury Rd.
Mississauga, Ontario
Canada L5R 3M3
Toll Free: (800) 387-0369
www.americanstandard.ca

MEXICO

American Standard B&K Mexico
S. de R.L. de C.V.
Via Morelos #330
Col. Santa Clara
Ecatepec 55540 Edo. Mexico
Toll Free: 01-800-839-1200
www.americanstandard.com.mx

PLEASE COMPLETE AMERICAN STANDARD WARRANTY REGISTRATION PROCESS AND SAVE THIS WARRANTY INFORMATION

IMPORTANT: Registration of the shower doors must be completed for this warranty to become effective. Your registration will make it easier to contact you in the event of a product recall.*

INSTRUCTIONS: Register your shower doors at www.americanstandard.com. Please save your proof of purchase (sale receipt). If you need assistance or do not have access to our website, please contact American Standard Customer Care at: (800) 442-1902. An American Standard representative will assist in completing the warranty registration.

*In California, your warranty rights remain intact even if you do not complete the registration process.

THIS WARRANTY IS NOT TRANSFERABLE FROM ORIGINAL CONSUMER PURCHASER.

American Standard

TELL US WHAT YOU THINK!



Please leave us a product review or story at **americanstandard.com/reviews**



Great Tub

03/13/2018 06:52:29 CDT American Standard Bathtubs Saver 60 Inch by 34 Inch Integral Apron Bathtub, Left Hand Drain

Love the tub. It is very roomy and would definitely buy it again. Our old tub cracked so we got this one to replace it. This one feels like it is more durable and not as flimsy as the last one.

Register your warranty and sign up for an idea-filled newsletter at **americanstandard.com/warranty**.

Find installation videos at **youtube.com/americanstandard**.

≡ WANT MORE INFO?

For questions or help call us at **800-442-1902**,
or visit **americanstandard.com**