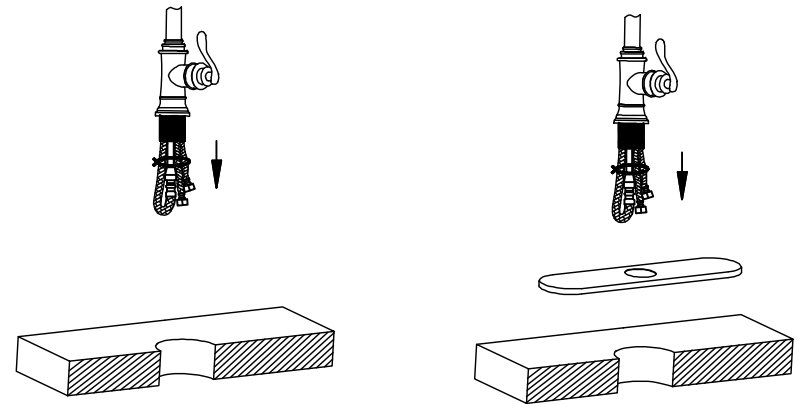
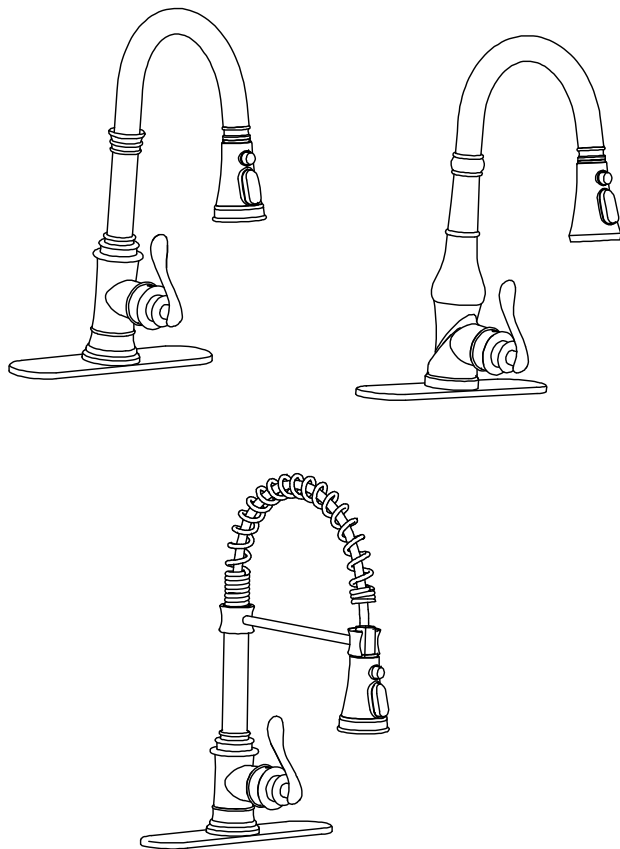
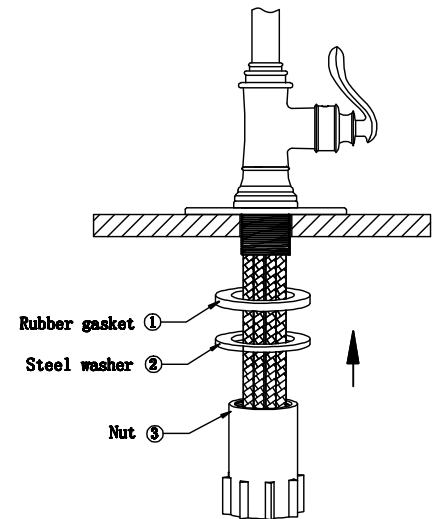


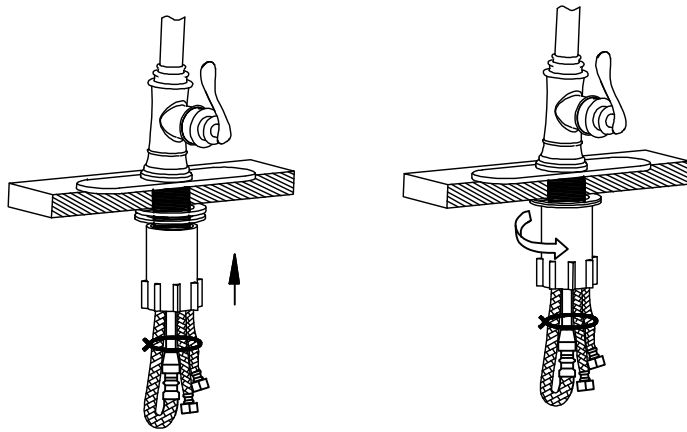
Single Handle Pull Down Kitchen Faucet Instruction



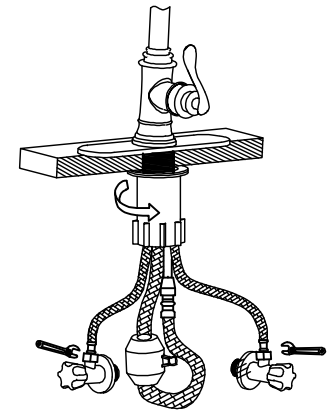
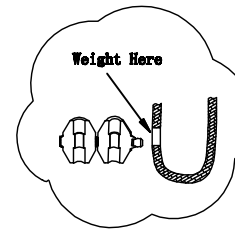
1. Insert faucet through the hole of the countertop



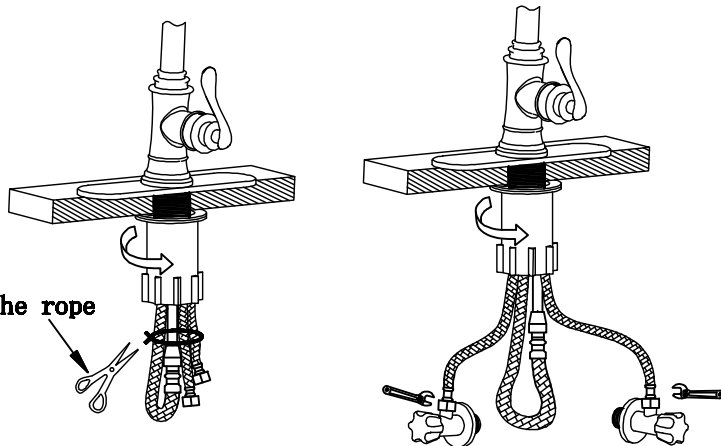
2. Put the parts of 1. 2. 3. in sequence and cross nut upward



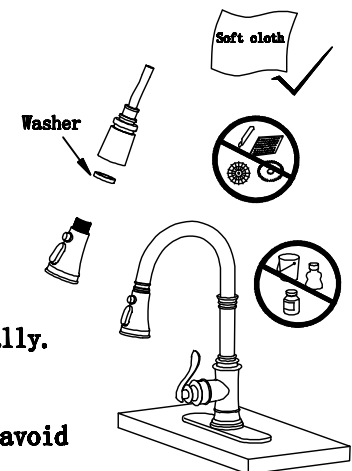
3. Screw black nut in counter-clockwise and check whether tighten or not between faucet and countertop



5. Take the weight out and press down "open" side then clasp weight to the label place "WeightHere" Installation finish and test leak or not.



3. Connect hot and cold water line to water supply valve with adjustable wrench.



6. Maintenance suggestion:

- a: Clean the surface of faucet usually.
- b: Clean the washer regularly.
Washer as show in the picture.
- c: To prevent the worn-out surface, avoid touching sharp objects.
- d: Avoid using acidic detergent to touch the surface of mixer as it may cause corrosion.

Right of product modification without notice is reserved