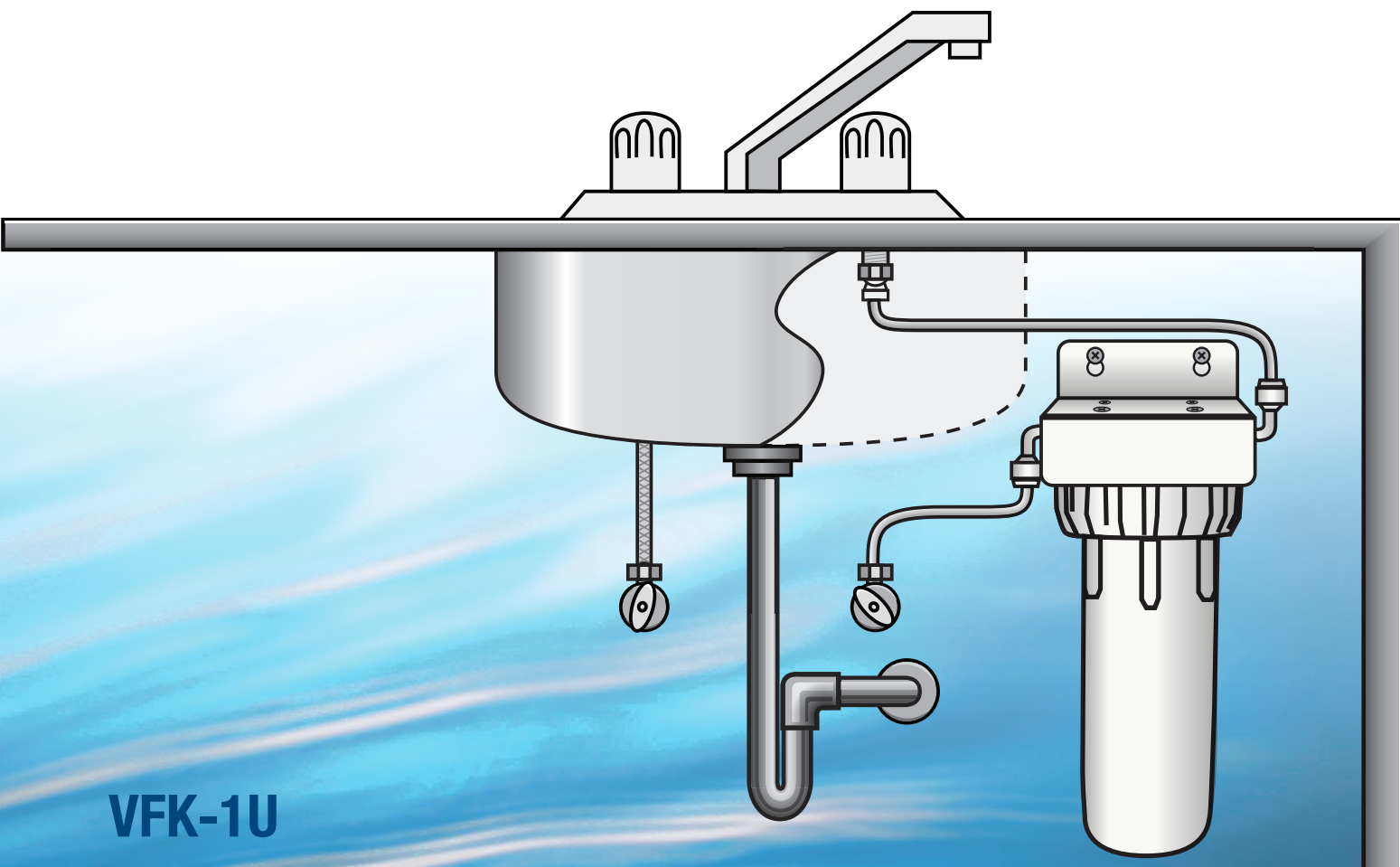




System is tested and certified by NSF International against NSF/ANSI Standard 42 and CSA B483.1 for reduction of the claims specified on the performance data sheet

## UNDER SINK Single Stage Universal Filtration System



**VFK-1U**

### Installation, Use & Care Guide

(Customer must read this manual thoroughly before installing the system)

2017-03-09

CONSUMER: Retain this manual for future reference.

Questions, problems, missing parts? Before returning to your retailer, call our customer service department at:  
1 (877)-447-4768. 8:30am-4:30pm CST, Mon - Fri or email us at [customerservice@ghpgroupinc.com](mailto:customerservice@ghpgroupinc.com)  
[www.ghpgroupinc.com](http://www.ghpgroupinc.com)



GHP Group  
USA: 6440 W. Howard Street, Niles, Illinois 60714  
Canada: 271 Massey Road, Guelph, Ontario, N1K 1B2

Printed in China

## Table of Contents:

Safety Precautions .....	1	Filter Cartridge Replacement Instructions.....	5
Conditions for Operation .....	1	Troubleshooting .....	5
Package Contents.....	2	Performance Data.....	6
Tools Required for Installation .....	2	Replacement Parts List .....	6
Installation Instructions.....	3 - 4	Warranty .....	7
Start-up Instructions.....	4		

## Safety Precautions:

- You must follow the guidelines to install this system. Check with your Province/State and local public works department for plumbing and sanitation codes.
- If house water line pressure is over the maximum 100 psi (pounds per square inch), install a pressure regulator in the water supply line before this system.
- System is for cold water use only and must be protected against freezing, which can cause water leakage.
- Do not use with water that is microbiologically unsafe or of unknown quality without adequate disinfection before or after the system.
- Make sure the water supply conforms to the specification guidelines. If the water supply conditions are unknown, consult your local municipal water company or health department about the quality and the list of contaminants of the water in your area.
- While using the system for the first time, or prolonged non-use (such as during a vacation over one week), the system should be flushed thoroughly.

**CAUTION: Let water run for 15 minutes to rinse the system before using.**

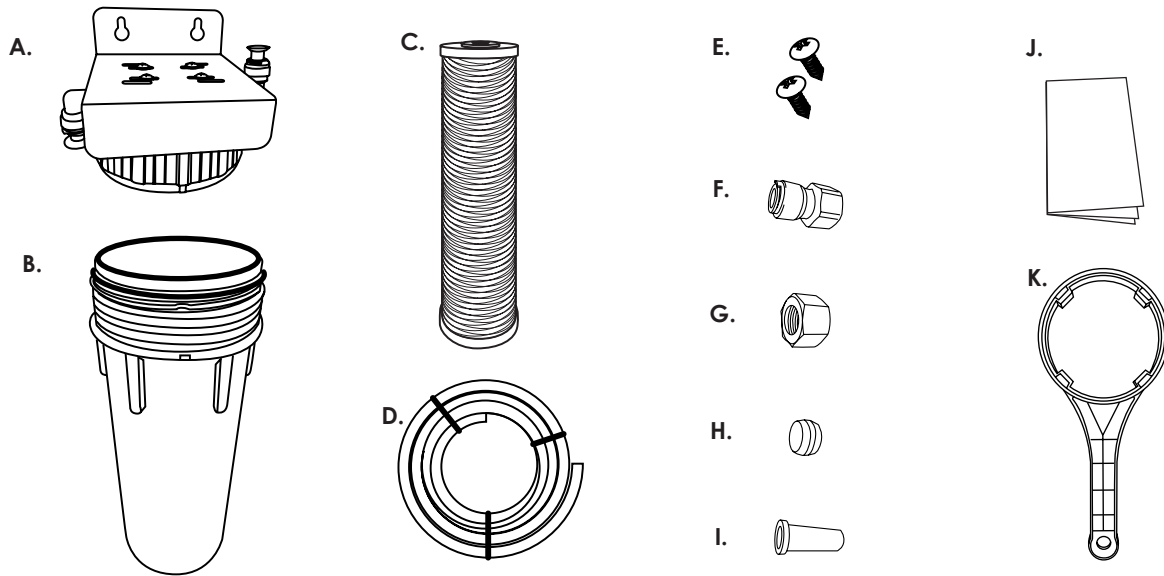
- This system contains a replaceable carbon block filter cartridge with a limited service life.

**CAUTION: Changes in taste, odor, color and/or flow of the water being filtered indicate that the cartridge should be replaced.**

## Conditions for Operation:

Flow Rate .....	1 GPM (3.8 LPM)
Min./Max. Operating Pressure .....	30 - 100 psi (207- 698 kPa)
Min./Max. Operating Temperature .....	40 - 113°F (4.4 -45°C)
Replacement Cartridge .....	VRFU-CTO (Carbon Block)
Capacity .....	3,000 Gallons (11,350 Liters)

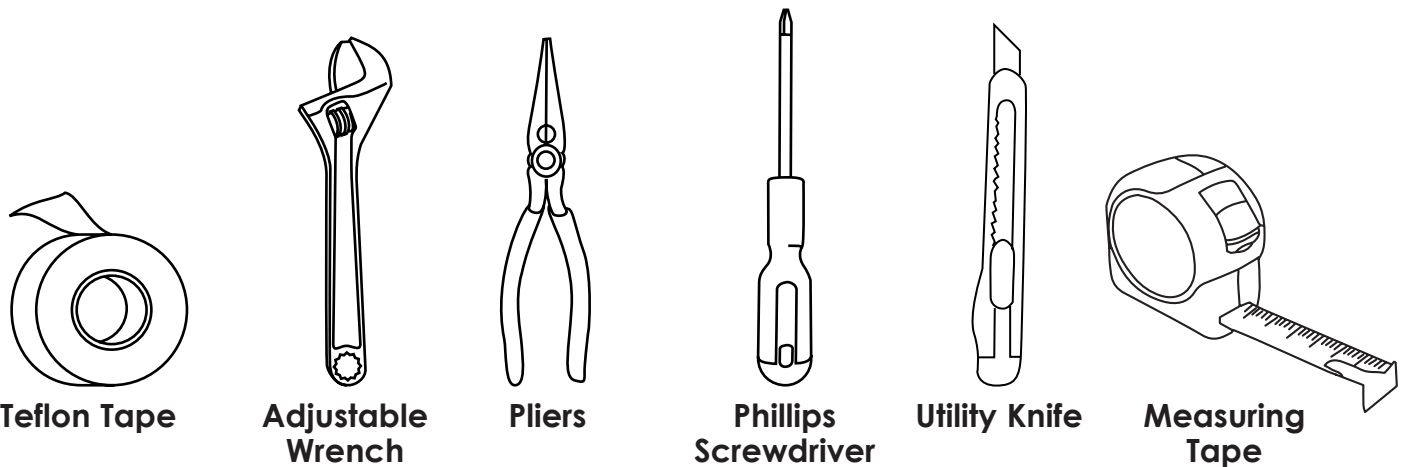
## Package Contents:



Part	Description	QTY
A	Head Assembly with Bracket	1
B	Filter Sump	1
C	Filter Cartridge (VRFU-CTO)	1
D	6' of 3/8" White Tubing	1
E	Mounting Screw	2
F	Faucet Adapter	1

Part	Description	QTY
G	3/8" Compression Hex Nut	1
H	3/8" Tube Ferrule	1
I	3/8" Tube Insert	1
J	Installation, Use & Care Guide	1
K	Sump Wrench	1

## Tools Required for Installation:



## Installation Instructions:

1. Insert Filter Cartridge (C) over the standpipe in the bottom of Filter Sump (B). Screw the sump to Head Assembly (A) and hand-tighten. Use Sump Wrench (K) to tighten, make sure the seal marks on the head and sump are aligned. **See Figure 1.**
2. Turn off cold water supply valve, and open sink faucet to relieve pressure from the sink's cold water supply line. Place a tray or towel under cold water line to catch excess water, and remove existing hose or tubing from cold water line between the shank of the faucet and the supply valve. **See Figure 2.**

Figure 1.

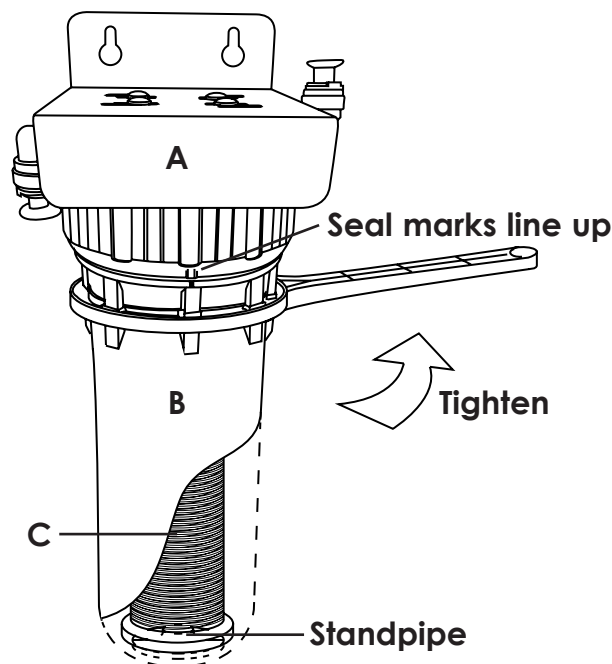
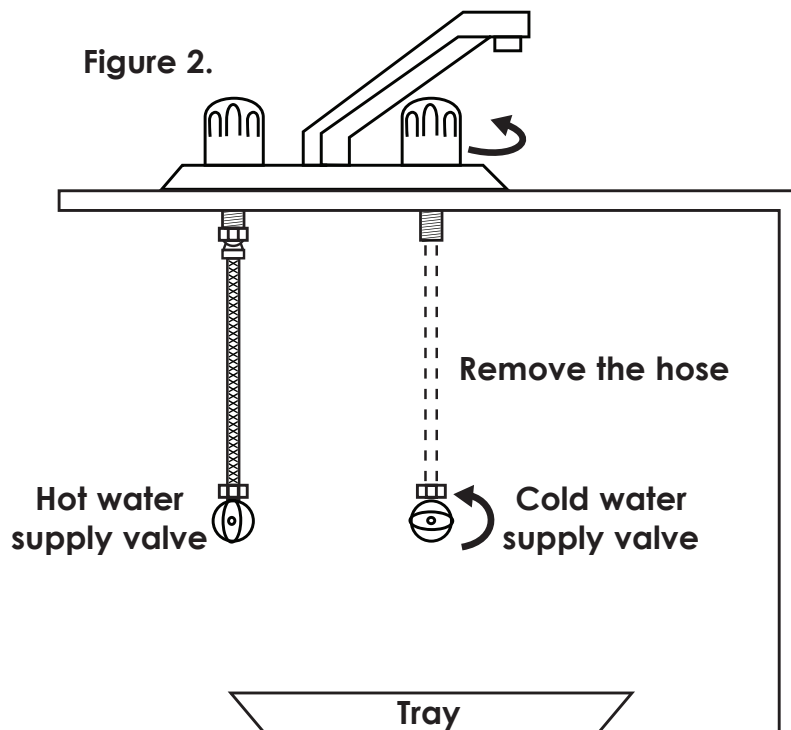


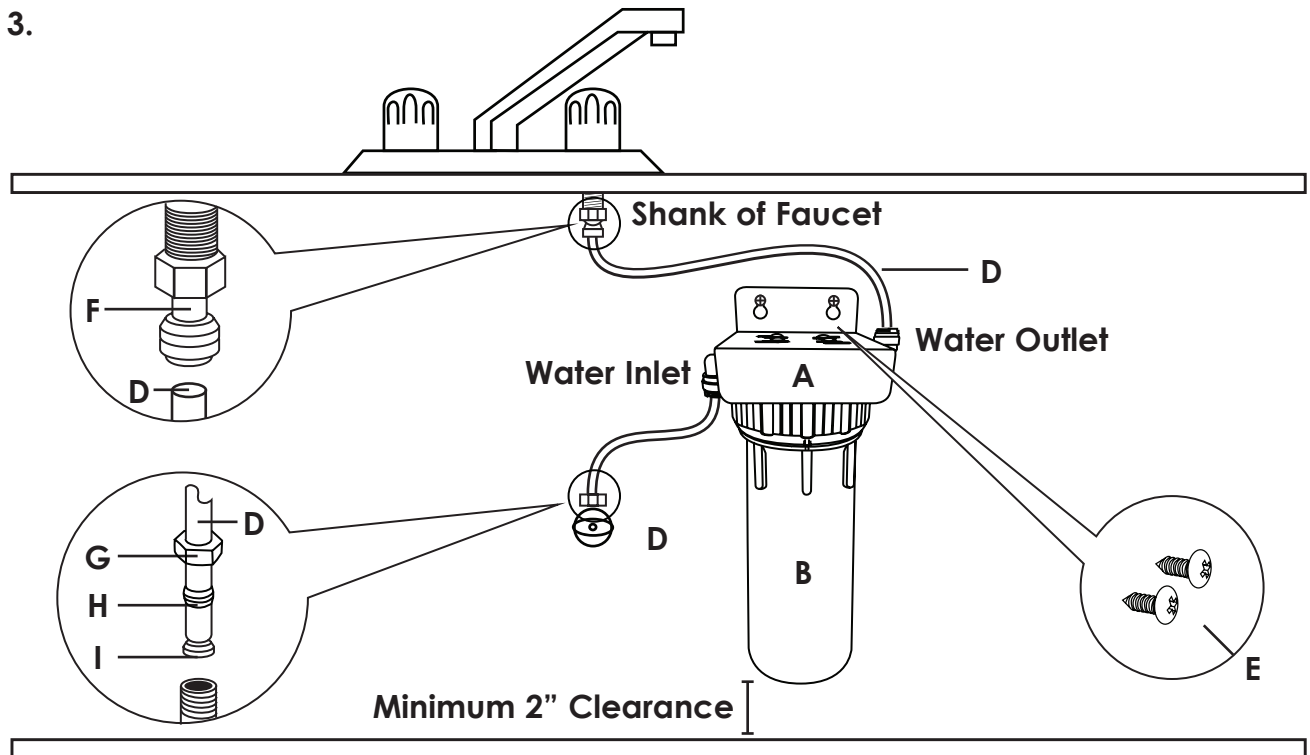
Figure 2.



3. Place Pre-Assembled Head Assembly (A) on the solid wall of the cabinet in proper position. Fix the bracket on the wall with two Mounting Screws (E). **See Figure 3 on next page.**  
**CAUTION: There must be a 2" minimum clearance between the bottom of Filter sump (B) and the floor of cabinet to facilitate easy replacement of the filter cartridge.**
4. Determine the length of 3/8" Tubing (D) from the outlet of Head Assembly (A) to the shank of the faucet by holding tubing in place ensuring it's of appropriate length. Cut tubing square with a utility knife.  
**CAUTION: Don't kink tubing as this will impede water flow.**
5. Wrap Teflon Tape around the threads of the shank of the faucet, screw the Faucet Adapter (F) onto the shank with adjustable wrench. Referring to Step 8, insert one end of the pre-cut tubing into the faucet adapter and the other into the water outlet side of the head. **See Figure 3.**
6. Determine the length of 3/8" Tubing (D) from the inlet of Head Assembly (A) to the cold water supply valve by holding tubing in place ensuring it's of appropriate length. Cut tubing square with a utility knife.  
**CAUTION: Don't kink tubing as this will impede water flow.**
7. Attach Compression Hex Nut (G), Ferrule (H) and Insert (I) in one end of 3/8" tubing. Wrap Teflon Tape around the thread of the cold water supply valve and then insert the tubing into the valve and tighten the nut with adjustable wrench. Referring to Step 8, insert the other end of the tubing into the inlet of the head. **See Figure 3.**

## Installation Instructions (continued):

Figure 3.



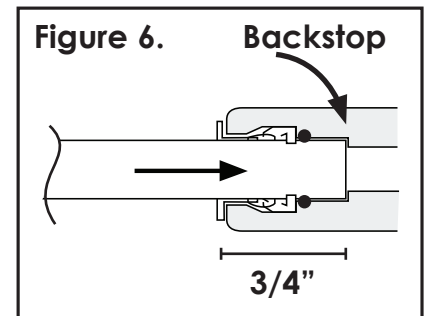
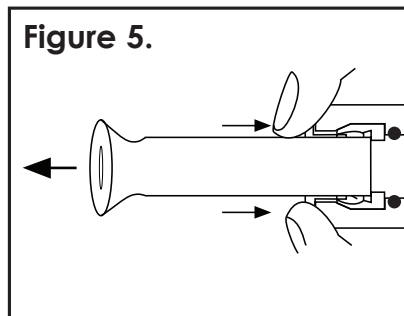
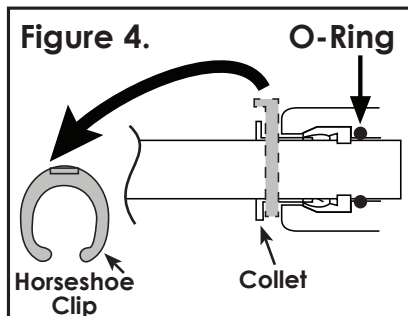
### 8. Tubing connection using Push-In Fittings

A. Take off blue horseshoe clip from collet. **See Figure 4:**

B. Pull out and discard protective plug by pushing the collet inward and holding with fingers. **See Figure 5:**

C. Insert Tubing (D) into the collet. Full engagement is 3/4" length of the tubing the fitting. **See Figure 6:**

**NOTE: Ensure tubing is pushed all the way to backstop.**



D. Put blue horseshoe clip back on collet.

E. To pull tubing out, simply repeat Steps A and B.

## Start-up Instructions:

1. Slowly open the cold water supply valve that you closed at the beginning of this installation.
2. Open the cold water sink faucet to purge air from the system. When the water runs smooth with no bubbles or spurting, close the faucet and check for leaks for all fittings.
3. Open the cold water sink faucet again to rinse the system.

**CAUTION: Let water run 15 minutes before using.**

**NOTE: Initially, there may be some dark discolouration of the water (carbon deposits). This condition is normal and will disappear quickly.**

## Filter Cartridge Replacement Instructions:

**NOTE:** The filter has a life expectancy between 6 to 12 months, depending on the incoming water conditions and the amount of water the system uses. You must periodically replace the filter. *The replacement filter can be obtained online at [www.ghpgroupinc.com](http://www.ghpgroupinc.com) or at the retail store the system was purchased.*

1. Turn off the cold water supply valve, and open sink faucet to relieve pressure from the system. Place a tray or towel under Filter Sump (B) to catch excess water.
2. Unscrew the sump by turning Wrench (K) in clockwise direction and remove old cartridge.
3. Wash the sump throughout with mild soap and water and rinse thoroughly.
4. Insert new Filter Cartridge (C) over the standpipe in the bottom of the sump.
5. Screw the sump back to the head and hand-tighten in counter-clockwise direction. Use the wrench to tighten, align the seal marks on the head and sump.
6. Slowly open the cold water supply valve that you closed at the beginning of this installation.
7. Open the cold water sink faucet to purge air from the system. When the water runs smooth with no bubbles or spurting, close the faucet and check for leaks. If any leaks, tighten the sump as needed.
8. Open the cold water sink faucet again to rinse the system.

**CAUTION:** Let water run 15 minutes before using.

**NOTE:** Initially, there may be some dark discolouration of the water (carbon deposits). This condition is normal and will disappear quickly.

## Troubleshooting:

Problem	Possible Cause	Solution
Water leaks between Sump and Head	Loose connection of sump and head.	Tighten with wrench.
	O-rings missed or not in right position.	Open sump to check the O-rings.
Water leaks at Push-in Connections	Tubing is not pushing in all the way.	Push tubing in as far as it will go.
	Tubing end is not cut square.	Push tubing out and recut to square.
	Tubing is cracked or scratched.	Simply cut that portion away and reinsert tubing.
Water leaks at threaded fittings	Loose connection.	Tighten slightly more until leak stops. <b>Do no over-tighten.</b>
Water has air bubbles and is cloudy	Air in the system after installation.	Will go away after water runs for a while.
Either no water flow or very slow.	Inlet valve is closed.	Turn on the valve.
	Filter cartridge have become clogged.	Replace the filter cartridge.
	Tubing is kinked.	Check the tubing and make smooth line.
Water tastes bad or has an odor	The filter is expended.	Replace the filter cartridge.

For further operating, installation, or maintenance assistance call GHP Group Inc. customer service department at 1 (877)-477-4768 Mon. - Fri. 8:30 a.m. – 4:30 p.m. CST or email us at [customerservice@ghpgroupinc.com](mailto:customerservice@ghpgroupinc.com)



## Performance Data:

**Note: Read this performance data and compare the capability of this system with your actual water treatment needs. It's recommended that, before installing the system, you have your water supply tested to determine your actual water treatment needs.**

The system conforms to NSF/ANSI Standard 42 for the specific performance claims as verified and substantiated by test data. While testing was performed under standard laboratory conditions, actual performance may vary.

This system has been certified by NSF International according to NSF/ANSI 42 and CSA B483.1 for the reduction of substances listed below. The concentration of the indicated substances in water entering the system was reduced to a concentration less than or equal to the permissible limit for water leaving the system as specified in NSF/ANSI 42/53.

### VFK-1U with VRFU-CTO Carbon Block Filter

Substance	Influent Challenge Concentration	Reduction Requirements	Average Concentration
Chlorine	2.0mg/L $\pm$ 10%	$\geq$ 50%	<b>91.8%</b>
Particulates ( $\geq 5 < 15\mu\text{m}$ ) Class III	10,000 /mL	$\geq$ 85%	<b>99.9%</b>

Flow Rate = 1 gpm (3.78L)

Capacity = 3,000 gallons (11,350L) or 6 months

Manufactured and warranted by:

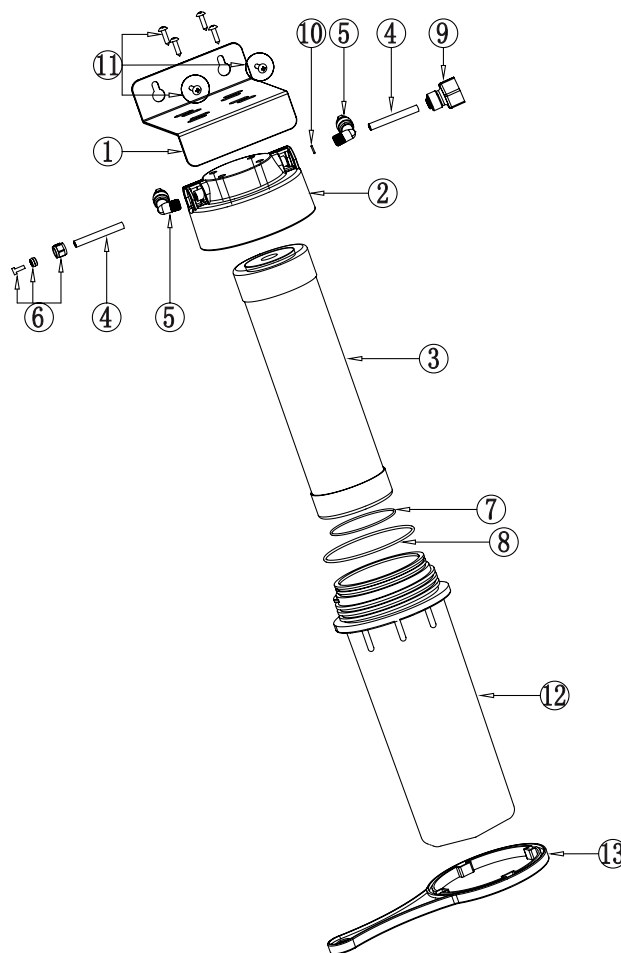
GHP Group Inc.

USA: 6440 W. Howard Street, Niles, Illinois 60714

Canada: 271 Massey Road, Guelph, Ontario, N1K 1B2

## Replacement Parts List:

Part	Description	Part #
1	Bracket	YY.VFK1U-1
2	Filter Head	YY.VFK1U-2
3	Filter Cartridge	VRFU-CTO
4	3/8" White Tubing, 6' long	YY.VFK1U-4
5	3/8" Push-in elbow	YY.VFK1U-5
6	3/8" Compression Connect Set	YY.VFK1U-6
7	O-ring Small, Filter Sump	YY.VFK1U-7
8	O-ring Big, Filter Sump	YY.VFK1U-8
9	Faucet Adaptor	YY.VFK1U-9
10	Flow Restrictor, $\varnothing 1.3\text{mm}$	YY.VFK1U-10
11	Mounting Screw	YY.VFK1U-11
12	Filter Sump	YY.VFK1U-12
13	Sump Wrench	YY.VFK1U-13



# Warranty:

## Limited Warranty:

This limited warranty is extended to the original retail purchaser of this filtration system and warrants against any defect in material and workmanship for a period of one (1) year from the date of retail sale. GHP Group, Inc., at its option, will either provide replacement parts or replace the unit, when properly returned to the retailer where purchased or one of our service centers as directed by GHP Group, Inc., within one (1) year of retail purchase. (Shipping costs, labour costs, etc. are the responsibility of the purchaser.)

## Duties of the Owner:

This filtration system must be installed and operated in accordance with the written instructions furnished with this system. This warranty shall not excuse the owner from properly maintaining this unit in accordance with the instructions. A bill of sale, canceled check or payment record must be kept to verify purchase date and establish warranty period. Original carton should be kept in case of warranty return of the unit.

## What is Not Covered?

1. Damage caused by misuse, installation or use contrary to the owner's manual and safety guidelines.
2. Use of this product where water is microbiologically unsafe or of unknown quality.
3. Damage of caused by a lack of normal maintenance and cleaning.
4. Use of non-OEM parts or accessories.
5. Damage caused in transit. Freight charges on warranty parts or products to and from the factory shall be the responsibility of the owner.

THIS LIMITED WARRANTY IS GIVEN TO THE PURCHASER IN LIEU OF ALL OTHER WARRANTIES, EXPRESSED OR IMPLIED, INCLUDING BUT NOT LIMITED TO THE WARRANTIES OF MERCHANTABILITY OF FITNESS FOR A PARTICULAR PURPOSE. THE REMEDY PROVIDED IN THIS WARRANTY IS EXCLUSIVE AND IS GRANTED IN LIEU OF ALL OTHER REMEDIES. IN NO EVENT WILL GHP GROUP, INC. BE LIABLE FOR INCIDENTAL OR CONSEQUENTIAL DAMAGES.

Some states/provinces do not allow limitations or how long an implied warranty lasts, so the above limitation may not apply to you. Some states/provinces do not allow the exclusion or limitation of incidental or consequential damages so the above limitation or exclusion may not apply to you.

## Claims Handles as Follows:

1. Contact your retailer and explain the problem
2. If the retailer is unable to resolve the problem, contact our Customer Service Dept. detailing the system model, the problem, and proof of date of purchase.
3. A representative will contact you. DO NOT RETURN THE UNIT TO GHP GROUP, INC. unless instructed by our Representative, or written authorization.

This warranty gives you specific legal rights and you may also have other rights that vary from state/province to state/province.

TO REGISTER THIS WARRANTY PLEASE FILL OUT THIS CARD COMPLETELY AND MAIL WITHIN FOURTEEN (14) DAYS FROM THE DATE OF PURCHASE OR REGISTER ON-LINE AT [www.ghpgroupinc.com](http://www.ghpgroupinc.com)

NAME: \_\_\_\_\_ PHONE: (    ) \_\_\_\_\_ EMAIL: \_\_\_\_\_

ADDRESS: \_\_\_\_\_ CITY: \_\_\_\_\_ STATE/PROV: \_\_\_\_\_ ZIP: \_\_\_\_\_

MODEL: \_\_\_\_\_ SERIAL #: \_\_\_\_\_ DATE PURCHASED: \_\_\_\_\_

DEALER PURCHASED FROM: \_\_\_\_\_ TYPE OF STORE: \_\_\_\_\_

CITY & STATE WHERE PURCHASED: \_\_\_\_\_ PRICE PAID: \_\_\_\_\_

**Please Take a Minute To Give Us Your Answers To The Following Questions.**

**All Responses Are Used Solely For Market Research And Are Held In Strict Confidence.**

Who primarily decided this purchase? ☐ Male ☐ Female ☐ 18-24 ☐ 25-39 ☐ 40-59 ☐ 60 and over

Purpose of Purchase? \_\_\_\_\_

Do you own any other filtration systems? ☐ Yes ☐ No If yes, type \_\_\_\_\_ brand \_\_\_\_\_

How do you intend to use your new system? ☐ Replace existing ☐ New location ☐ Other

How did you become aware of this system? ☐ In-Store Display ☐ Newspaper Ad ☐ Magazine Ad ☐ Friend/Relative

☐ TV Commercial ☐ Store Salesperson ☐ Other \_\_\_\_\_

What made you select this system? ☐ Style ☐ Reduction claims ☐ Price ☐ Package ☐ Brand ☐ Other \_\_\_\_\_

Would you recommend this system to a friend? ☐ Yes ☐ No

Please give us your comments: \_\_\_\_\_

THANK YOU FOR COMPLETING THIS FORM!

Information will be held confidential.