



# Ensemble™ Medley®

60" x 30" Vikrell® bath/shower, right above-floor drain

**71370122**



## Features

- 18-3/4" (476 mm) apron
- Tongue-and-groove walls with snap-together installation
- High-gloss walls
- Molded-in shelves
- 3" (76 mm) drain-to-floor clearance for above-floor drain installation
- Innovative Dry-Block™ seal and channeled water containment system form watertight seams

## Material

- Made from solid Vikrell® material for strength, durability, and lasting beauty

## Installation

- Alcove
- Right drain
- Caulk-free installation

## Recommended Products/Accessories

- K-23726 Drain treatment
- K-23733 Vikrell® cleaner

## Included Components

- 71374100 60" x 30" Vikrell® bath/shower wall set
- 71171122 60" x 30" Vikrell® bath, right above-floor drain



## Codes/Standards

- CSA B45.5/IAPMO Z124
- ASTM E162
- ASTM E662
- HUD, UM Bulletin 73
- IAPMO Certification


## STERLING® Vikrell® or Acrylic Baths and Shower Bases Ten-Year Limited Warranty

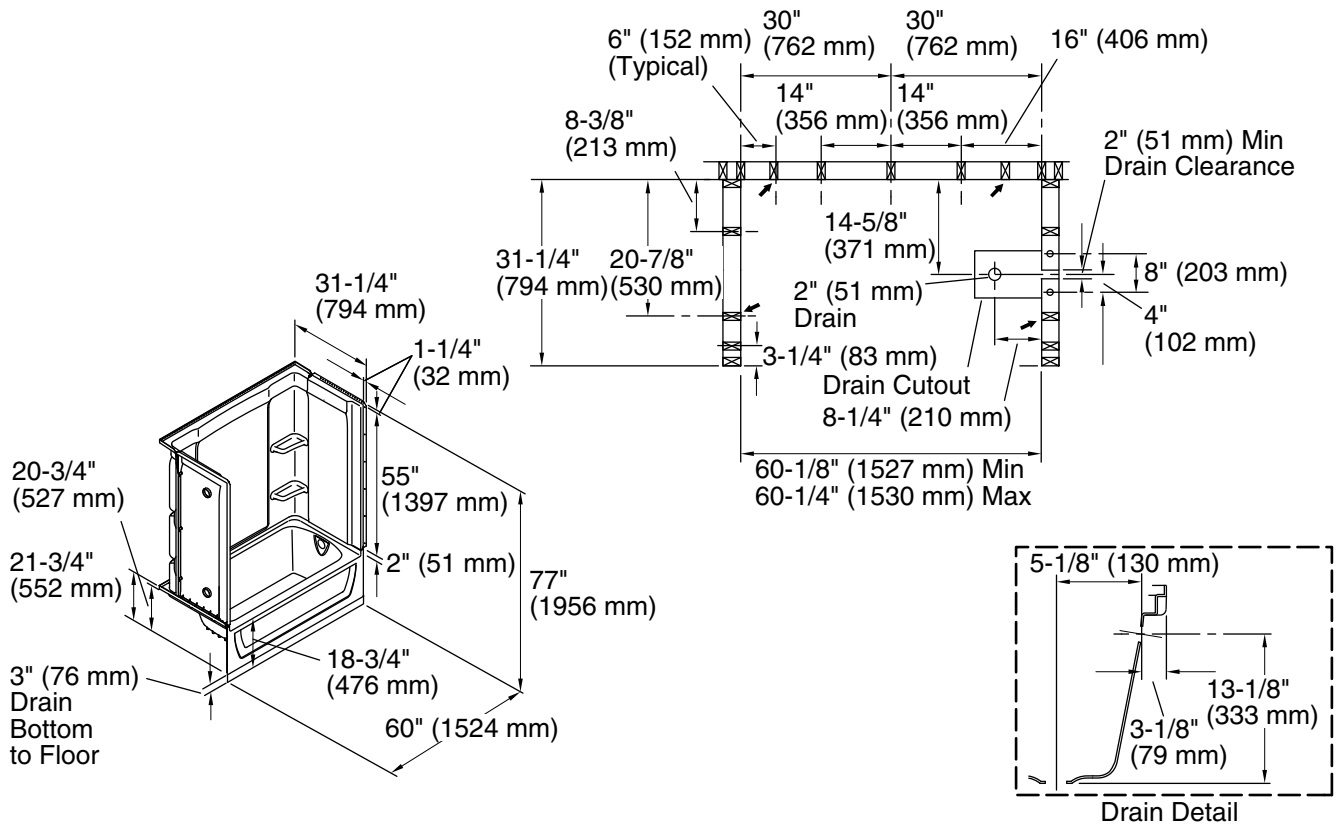
See website for detailed warranty information.

## Available Colors/Finishes

*Color tiles intended for reference only.*

### Color Code Description

	0	White
---	---	-------



### Technical Information

All product dimensions are nominal.

Drain location:	Right
Basin area, bottom:	45" x 20" (1143 mm x 508 mm)
Basin area, top:	53" x 23" (1346 mm x 584 mm)
Water depth:	11-1/4" (286 mm)
Water capacity:	44 gal (166.6 L)
Minimum flat for door:	2-3/4" (70 mm)
Maximum door height:	56-3/4" (1441 mm)
Maximum door width:	57-11/16" (1465 mm)

### Notes

Install this product according to the installation instructions.

Studs should be positioned roughly as shown.

Double studding is recommended for pivot shower door installations.

Felt pad not required for installation.