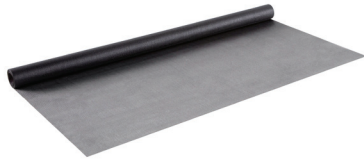




# How to Replace: Window & Door Screen Mesh

## SUPPLIES NEEDED:

SCREEN



FRAME



## SPLINE

.14 in Recommended for:



Aluminum



Pet



Sun

.16 in Recommended for:



Fiberglass



Extra Strength



Small Bug

.175 in Recommended for:



Crystal Clear

.125 in & .19 in Spline are available for use with alternative size Screen Frames

Spline size recommendations based on 5/16 in Screen Frame

## TOOLS NEEDED:



FLATHEAD SCREWDRIVER



SCISSORS

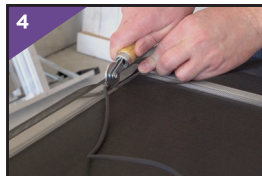
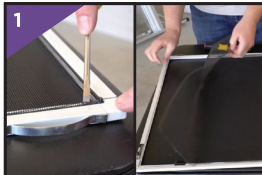


SPLINE TOOL



UTILITY KNIFE

## INSTALLATION:



1. Remove old Spline and Screen mesh from Screen Frame using flathead screwdriver.
2. Lay new Screen mesh flat over the Screen Frame ensuring a minimum 1" overlap on all sides and cut from roll.
3. For Aluminum Screen, gently crimp Screen mesh into the groove using the smooth or convex end of the Spline Tool.
4. Insert new Spline into one corner and using the slotted or concave end of the Spline Tool, press into the groove over the Screen mesh. Gently straighten and tighten Screen mesh while rolling Spline into groove.
5. Trim Spline.
6. Trim excess Screen mesh along the outside edge of the frame groove.



# How to Install: Window & Door Screens and Frames

## SUPPLIES NEEDED:

SCREEN



FRAME



## SPLINE

.14 in Recommended for:



Aluminum



Pet



Sun

.16 in Recommended for:



Fiberglass



Extra Strength



Small Bug

.175 in Recommended for:



Crystal Clear

.125 in & .19 in Spline are available for use with alternative size Screen Frames

Spline size recommendations based on 5/16 in Screen Frame

## TOOLS NEEDED:



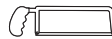
MEASURING TAPE



FLATHEAD SCREWDRIVER



PENCIL



HACKSAW



SCISSORS

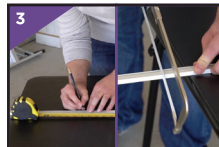


SPLINE TOOL



UTILITY KNIFE

## INSTALLATION:



### Step 1: Build Screen Frame

- Measure window for Screen Frame dimensions. Subtract 1-1/2" from height and width for Frame Corners.
- Remove Spline from Screen Frame using flathead screwdriver.
- Measure and cut Screen Frame to length.
- Assemble Screen Frame.



### Step 2: Install Screen Mesh

- Lay new Screen mesh flat over the Screen Frame ensuring a minimum 1" overlap on all sides and cut from roll.
- For Aluminum Screen, gently crimp Screen mesh into the groove using the smooth or convex end of the Spline Tool.
- Insert new Spline into one corner and using the slotted or concave end of the Spline Tool, press into the groove over the Screen mesh. Gently straighten and tighten Screen mesh while rolling Spline into groove.
- Trim Spline.
- Trim excess Screen mesh along the outside edge of the frame groove.