



LIMITED LIFETIME WARRANTY

Compass Manufacturing International warrants to the original consumer purchaser that the faucet be free from defects in material and workmanship for as long as the original consumer purchaser owns the home in which the faucet was first installed.

In the event that Freendo faucets are used in a Commercial Application, this warranty is limited for a period of 5 years, unless otherwise specifically stated in the catalog and/or price book.

Compass Manufacturing International will replace, free of charge, during the applicable warranty period, any part or finish that proves defective in material and/or workmanship under normal installation, use and service. This warranty shall not apply to goods which have been subject to accidents, negligence or improper installation. Compass Manufacturing International will not be liable for other damages or losses, including, but not limited to: labor charges and/or damages incurred in installation, repair or replacement as well as any other kind of loss or damage. Proof of purchase from the original consumer purchaser must be made available for all warranty claims.

Compass Manufacturing International recommends using a professional plumber for all installation and repair. Compass Manufacturing International will, at its discretion, provide new or equivalent replacement parts for any product that proves to be defective under normal usage and service. Replacement parts may be obtained by emailing the address below, calling the number below or by writing to:

Compass Manufacturing International

Freendo Product Service

6702 Enterprise Drive

Louisville, KY 40214

800.626.3525

warranty@cmiproduct.com

Revised 4/24/17

warranty@cmiproduct.com

© Compass Manufacturing International

800.626.3525



Model No. : 192-6401 Polished Chrome
192-6402 Brushed Nickel *Spotless PVD*
192-6403 Oil-Rubbed Bronze



Cardania Two Handle Bathroom Faucet With Pop-up

3 Hole Installation, 4" Center-Set



Helpful Information

Helpful Tools

Tools:

Gather the necessary tools as shown below to complete the installation of this faucet. Some may not be needed depending on the model of faucet you are installing.



Plumber's Putty
and/or Silicone



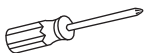
Flashlight



Basin Wrench



Safety Glasses



Screwdriver



Pliers



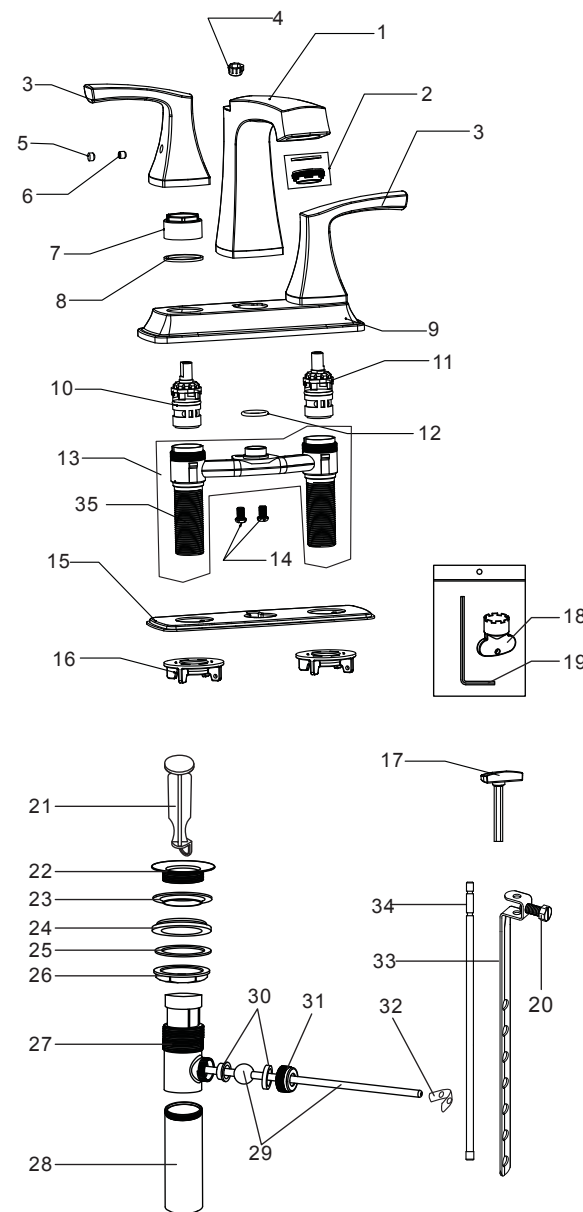
Channel Locks



Adjustable Wrench

5

Parts Diagram / List



35	Faucet Tailpiece
34	Lift Rod
33	Extend Rod
32	Spring Clip
31	Rod Guide Nut
30	Rod Ball Plastic Gasket
29	Horizontal Rod
28	Tailpiece
27	Drain Body
26	Locknut
25	Washer
24	Bottom Rubber Washer
23	Top Rubber Washer
22	Flange
21	Drain Stopper
20	Extend Rod Screw
19	Allen Key
18	Aerator Wrench
17	Handle of lift rod
16	Plastic Locknut
15	Putty Plate
14	Screw
13	Brazed Underbody
12	O-ring
11	Cartridge(Cold Water)
10	Cartridge(Hot Water)
9	Deck Plate
8	Plastic Washer
7	Cartridge Locknut
6	Screw
5	Index
4	Sleeve
3	Handle
2	Aerator
1	Spout
No.	Part Name

4

Configuration

A. Faucet tailpiece



B. Faucet tailpiece



C. Faucet tailpiece



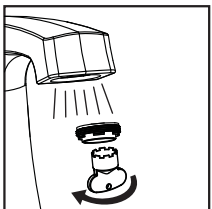
Connect to water supply lines with either:

- (A) 3/8" O.D. Copper tubing (ball nose risers with the coupling nuts or;
- (B) 3/8" Copper tubing (no ball) with supplied tube head interior connector or;
- (C) IPS faucet connectors (1/2")



Warning:

The supply valve and supply lines are not included.



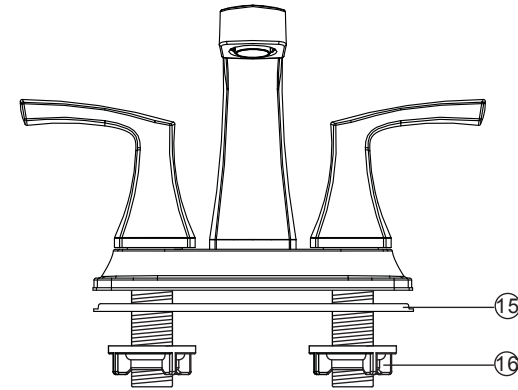
Important:

Remove the aerator and let both hot and cold water run for one minute. This will help clean any debris that might clog the system. Re-assemble aerator.

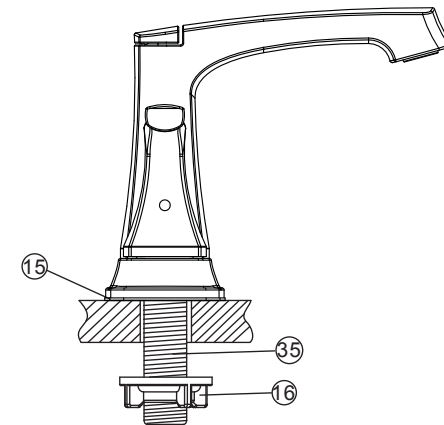
Test system for leaks .

1

Preparation / Mounting



1. Shut off water supply and drain lines. Clean sink surface thoroughly. Make sure mounting area is clean and dry.
2. Remove the plastic locknut 16 from faucet. Don't remove the putty plate 15 from faucet.

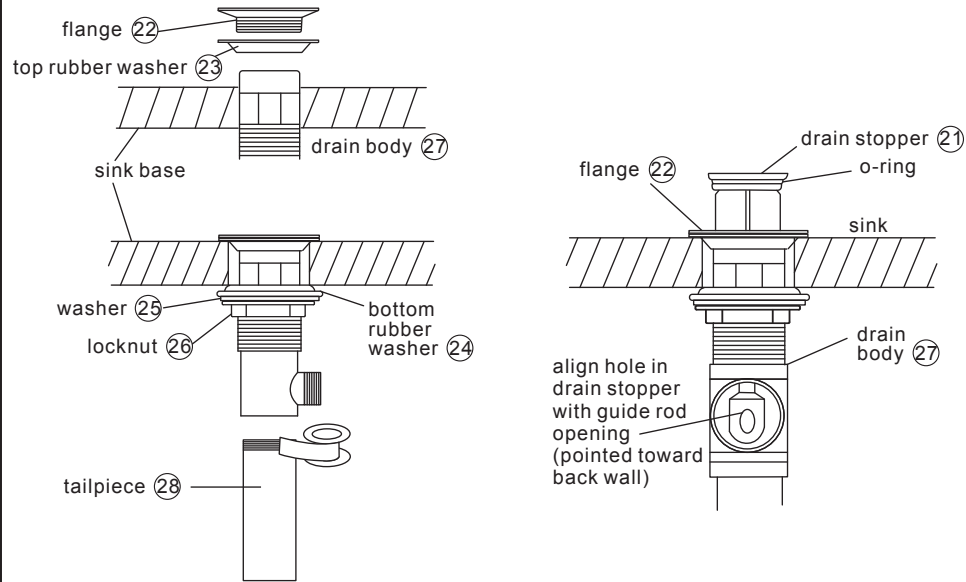


3. Position the faucet on the countertop with putty plate 15 . Replace the plastic locknuts 16 on the faucet tailpiece 35 and tighten the plastic locknuts 16 by hand.

2

Pop-up Installation

Instruction for product with drain option only

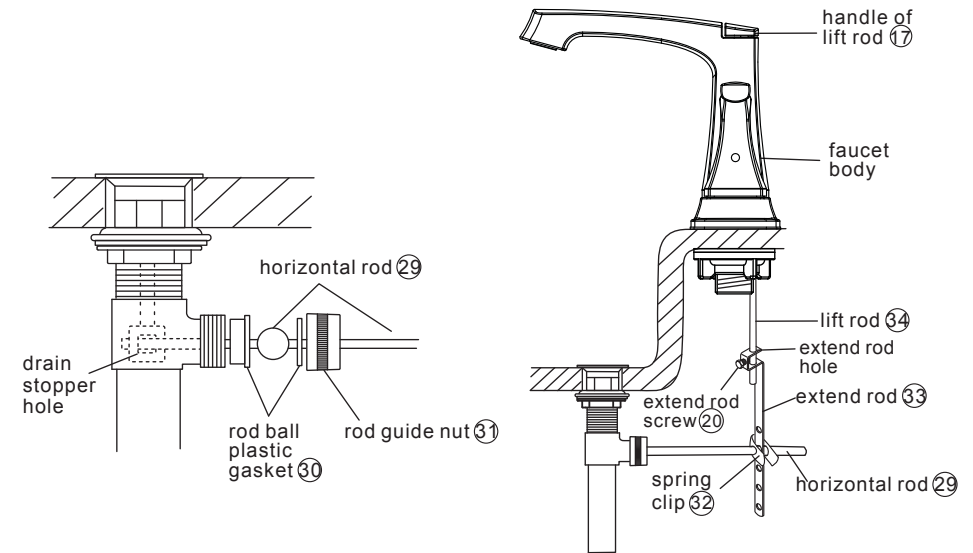


- Remove pop-up drain stopper (21) and flange (22) with top rubber washer (23) for pop-up assembly.
 - Insert drain body from underneath of sink drain hole. Replace flange (22) and top rubber washer (23) back to drain body (27). Tighten flange as far as possible.
 - Slide bottom rubber washer (24) on drain body up against bottom of sink. Tighten washer (25) and locknut (26) firmly against base for tight seal.
 - Remove tailpiece (28) from drain body (27), add teflon tape, replace tailpiece (28).
- Replace pop-up drain stopper (21) to drain body (27) with o-ring in place, and align stopper hole with guide rod opening.

3

Pop-up Installation

Instruction for product with drain option only



- Remove rod guide nut (31) and rod ball plastic gasket (30).
 - Insert horizontal rod (29) into drain body (27) and through hole in drain stopper (21).
 - Replace rod guide nut (31) with rod ball plastic gasket (30) and tighten it.
- Insert lift rod (34) through hole on faucet body. Connect horizontal rod (29) to extend rod (33) using spring clip (32) to hold and adjust.
 - Attach extend rod (33) with lift rod (34) by inserting lift rod through extend rod hole. Now adjust lift rod (34) to correct height and hand tighten extend rod screw (20).