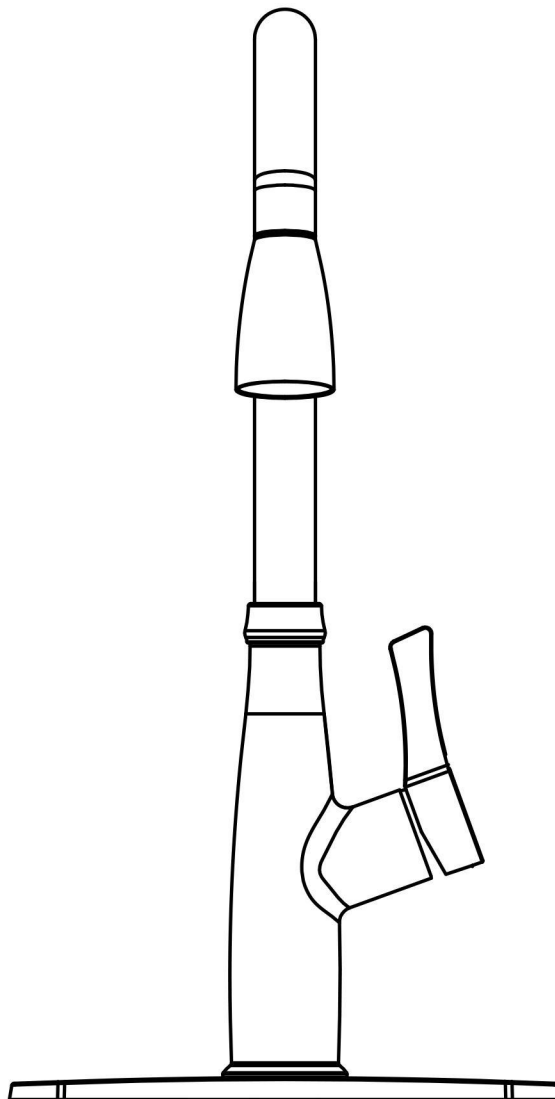


# User's Manual



# Installation Manual








# CERTIFICATE OF LISTING

**IAPMO Research and Testing, Inc.** is a product certification body which tests and reports compliance labels from the listing of these products as a condition of entry to a market in compliance with applicable laws and regulations. This listing is a result of the product certification of the supplier's factory and acceptance of the supplier's Quality Assurance System. The listing is subject to the conditions on which the listing is based and will be terminated if any non-compliance or non-conformance is discovered by IAPMO Research and Testing, Inc. or the product manufacturer or Authorized Listing Jurisdiction.

This certificate is not evidence of current listing. To verify listing status, visit the IAPMO R&T Product Listing Directory at [www.iapmo.org](http://www.iapmo.org)

Effective Date:	December 2019	-Rev. 2/24/2020-	Void After: December 2024
Product:	Flexible Water Connectors		File No. 5311
Issued To:	Frankl Group Inc. Mechanical & Electrical Industrial, Res. Yuhuan County, Yuhuan 317605, ZHEJIANG China		
Identification:	Products shall be marked with manufacturer's name or trademark, a statement "For use with water in accessible locations only". The products shall also bear the cUPC certification mark. Markings shall be by means of either a permanent mark on the product, a label on the product or a tag attached to the product.		
Characteristics:	Flexible water connectors manufactured in various sizes, lengths and metal end fittings for hot or cold water applications that consist of an inner tube, which may or may not have an outer braided cover. Connectors are to be installed for use in accessible locations only. To be installed in accordance with the manufacturer's instruction, the latest edition of the Uniform Plumbing Code and National Plumbing Code of Canada.		
	Products listed on this certificate have been tested by an IAPMO R&T recognized laboratory. This recognition has been granted based upon the		
 			
Chairman, Product Certification      CEO, The IAPMO Group			

**IAPMO RESEARCH AND TESTING, INC.**  
5001 East Philadelphia Street, Ontario, California 91761-2816 • USA • 909-472-4100 • 909-472-4424 • [www.iapmo.org](http://www.iapmo.org)

## CERTIFICATE OF LISTING

IAPMO Research and Testing, Inc. is a product certification agency which tests and inspects samples taken from the supply chain or from the market at a combination of times in order to verify compliance with applicable standards. This activity is required under specific provisions of the International Plumbing Code and is performed on the basis of a contract with the manufacturer or distributor. The listing is a statement of compliance with the applicable standards and is not a statement of approval or endorsement by IAPMO Research and Testing, Inc. of the product acceptance by Authorized Listing Authorities.

This certificate is not evidence of current listing status. To verify listing status, visit the IAPMO R&T Product Listing Directory at [plb.iapmo.org](http://plb.iapmo.org)

Effective Date: November 2019

Valid After: November 2024

Product: Plumbing Fittings Fittings

File No. 10633

Issued To:  
Apex Galleys Co., Inc.  
11th-15th St. Blvd  
International, Ontario  
Sanitary City, 82800  
Fulan,  
China

Identification: Matching supply fittings complying with this Standard shall be marked with the manufacturer's recognized name, trademark, or other mark or, in the case of private labeling, the name, trademark or other mark of the customer for whom the fitting was manufactured. The marking shall be accomplished by use of a permanent mark or by placing a permanent label on the product. Markings on plumbing supply fittings shall be visible after installation.

Single-handle, single-control, and automatic compensating mixing bath and shower valves shall have identifiable temperature control settings in which the settings are identified by words ("cold", "warm", "hot", etc.), by numbers, or graphically.

Packages shall be marked with the manufacturer's name, trademark, or other mark as well as the model number or, in the case of private

*Tom Collins*  
Chairman, Product Certification Committee

*Ron Chany*  
CEO, The IAPMO Group

This listing report is based on test results taken from the product listed on the Effective Date and Valid After Date shown above. Any change in material, manufacturing process, marking or design without notice from the applicant is the responsibility of the Product Listing Committee, or any other entity as may be designated in writing by the applicant. The listing is a statement of compliance with the applicable standards and is not a statement of approval or endorsement by IAPMO Research and Testing, Inc. of the product acceptance by Authorized Listing Authorities. The listing is a statement of compliance with the applicable standards and is not a statement of approval or endorsement by IAPMO Research and Testing, Inc. of the product acceptance by Authorized Listing Authorities.

**IAPMO RESEARCH AND TESTING, INC.**  
5001 East Philadelphia Street, Ontario, California 91761-2816 • USA • 909-472-4244 • [www.iapmo.org](http://www.iapmo.org)

## CERTIFICATE OF LISTING

IAPMO Research and Testing, Inc. is a product certification body which tests and inspects samples from each manufacturer's product in accordance with a combination of tests to verify compliance with applicable standards. This service is provided as a voluntary, non-exclusive, non-binding, non-adversarial certification of the manufacturer's factory and examination as well as the assessment of the applicable Underwriters Laboratories listing. The listing is submitted to the committees and staff in the Underwriters Laboratories and is used as one of its recommendations, evidence or approvals by IAPMO Research and Testing, Inc. of the product acceptance by Underwriters Laboratories. Attention:

This certificate is not evidence of current listing. To verify listing status, visit the IAPMO R&T Product Listing Directory at [pld.iapmo.org](http://pld.iapmo.org)

Effective Date: March 2019

Void After: March 2024

Product: Plumbing Fixture Fittings - Components

File No. NS-19703

Issued To: Ningbo Xuhai Cartridge Technology Co., Ltd.  
Xiaochen Zhou, Chuansu  
Fengshan, HZ8800 315538  
China

Identification: Each fitting component shall bear permanent legible markings to identify the manufacturer. This marking shall be the trade name, trademark, or other mark known to the manufacturer. The product shall also bear all other markings required by the standard. The marking shall be applied so as to be visible after installation. The product or component shall also bear the "UPC" certification mark along with the term "COMPONENT" above.

Characteristics: Plumbing fixture fitting components to be installed in accordance with the manufacturer's instructions and the requirements of the latest edition of the Uniform Plumbing Code.

Products listed on this certificate have been tested by an IAPMO R&T recognized laboratory. This recognition has been granted based upon the laboratory's compliance to the applicable requirements of ISO/IEC 17025.

Products are in compliance with the following code(s):  
Uniform Plumbing Code (UPC)

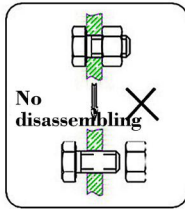
*Tom Collins*  
Chairman, Product Certification Committee

*Ron Chany*  
CEO, The IAPMO Group

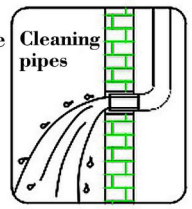
This document is based upon the test data of the product submitted on the Effective Date and the data shown above. Any change in material, manufacturing process, marking or design without being first submitted for approval at the IAPMO Research and Testing, Inc. facility will void this listing. This listing is not a warranty, nor does it constitute an endorsement or approval of the product or the manufacturer of the product in the type of advertising process may be made only by a written representation of IAPMO Research and Testing, Inc. Any alteration of this certificate could be regarded as falsification of the listing. This document shall not be reproduced or reprinted.

# BEFORE INSTALLATION

This product has been inspected and debugged by the factory to the best condition. Please do not disassemble and assemble it yourself.



Before installing the faucet, please be sure to remove sundries and sludge from the water pipe to prevent sundries from blocking the faucet.



A. Make sure you have all necessary parts by checking the diagram and parts list.

B. Turn off the hot and cold water supply at the angle stops and turn on the old faucet to release any built up pressure. Remove existing faucet. Clean sink or countertop in preparation for new faucet.

C. Shut off angle stops.

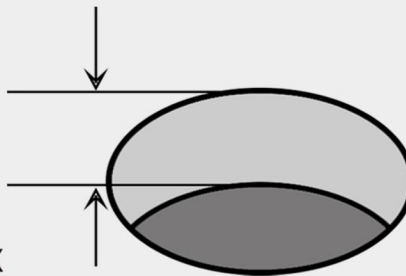
D. Pre-drilled hole size requirement: 1-3/8"(min)-1-1/2"(max)

Max countertop thickness without deck plate: 1-1/2"(1 hole install)

Max countertop thickness with deck plate: 1"(1, 2 or 3 hole install)

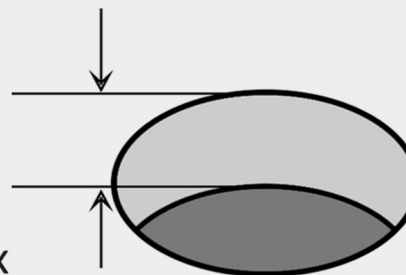
1/16" (1 mm) min  
1-1/2" (38 mm) max

φ 1-3/8" (35mm) min  
φ 1-1/2" (38 mm) max



1/16" (1 mm) min  
1" (25.4 mm) max

φ 1-3/8" (35mm) min  
φ 1-1/2" (38 mm) max



## Tools you will need:



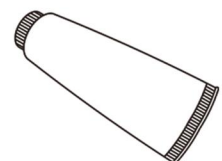
Adjustable Wrench



Safety Goggles



Bucket



Silicone Sealant



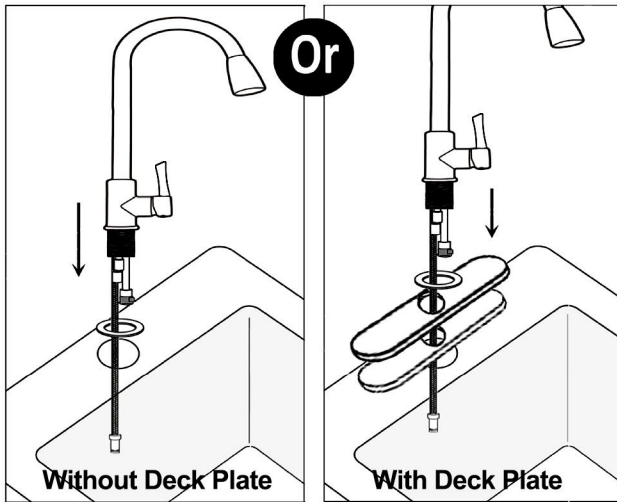
# INSTALLATION STEPS

## 1. Without Deck Plate

Slide the washer(o-ring) to faucet base. Insert the faucet through sink hole.

## With Deck Plate

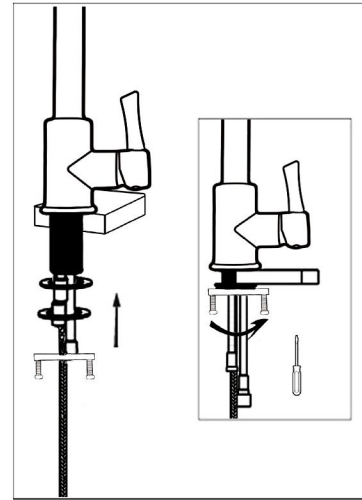
Slide the washer(o-ring), deck & putty plate to faucet base. Insert the faucet through sink hole.



## 2. Put the washer on screw nut.

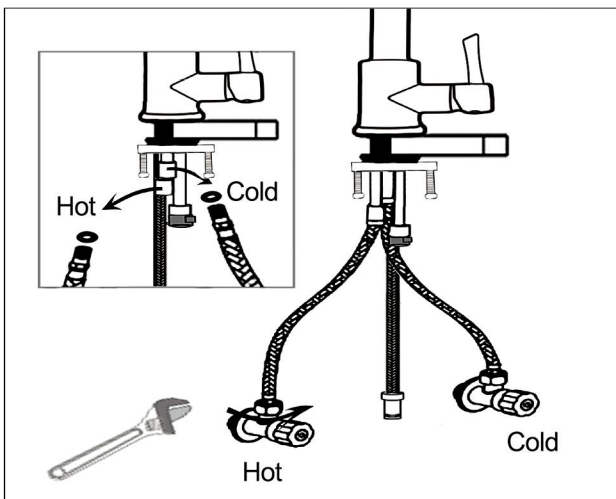
Screw the nut onto thread.

Before tighten, rotate the hand to the side you like, then tighten the nut securely.

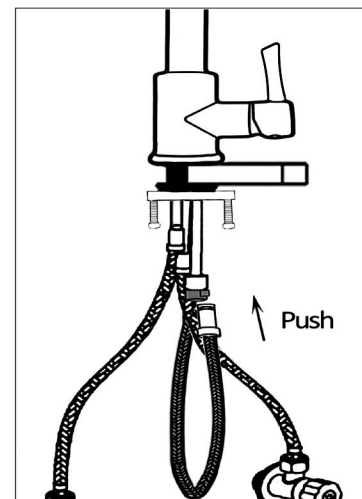


## 3. Correct and tighten hot and cold water hose.

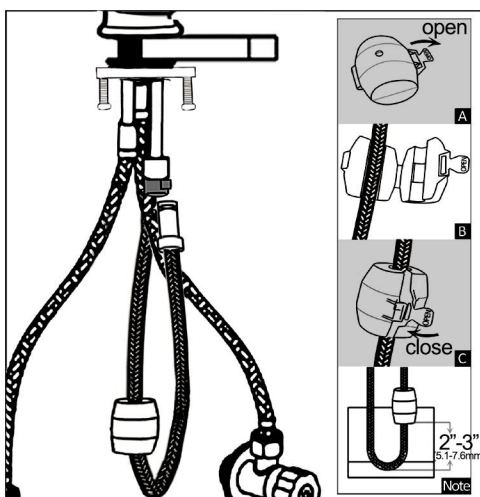
Note: Made sure that a small washer(o-ring) is put on each water-line before screwing.



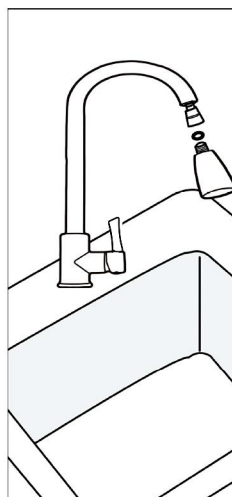
## 4. Push the sprayer hose to the quick connect.



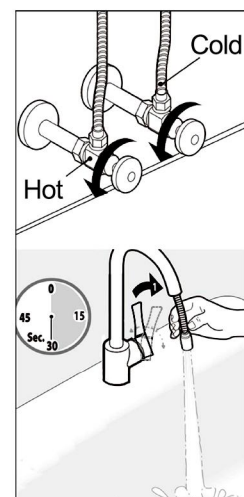
5. Open the weight, put it on sprayer hose. Then close it. Note: To make sure that the pull out hose go back smoothly, you need to adjust the weight in right position.



6. Place handle in off position. Screw off the sprayer head. Note: Don't lost the o-ring.



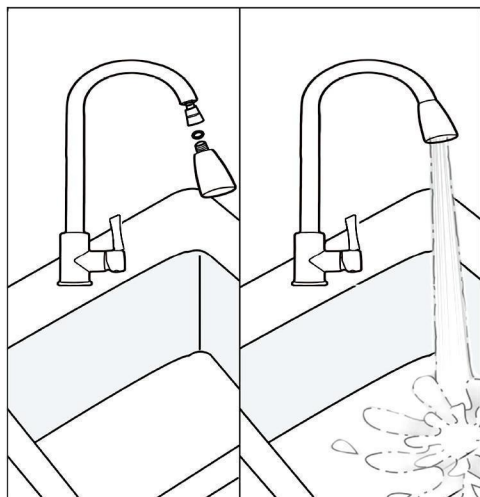
7. Turn on water supply. Check for leaks and flush hoses and flush the faucet for 30s.



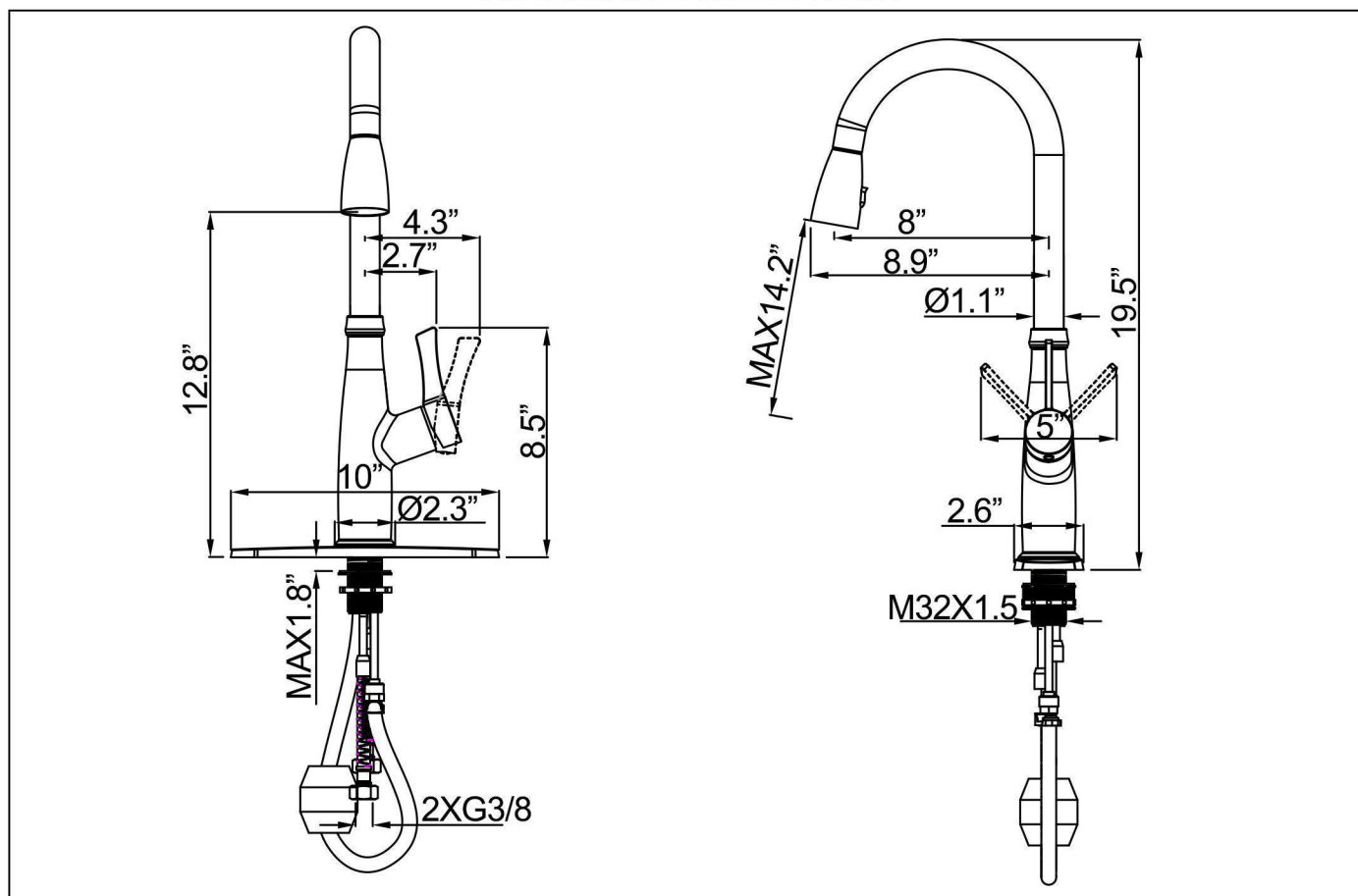
# INSTALLATION STEPS

8. Turn off the faucet, screw the sprayer head back the sprayer hose.

Note: Don't forget the o-ring.



## INSTALLATION DIMENSION



## CLEANING CARE

In order to keep the appearance of faucet clean, bright and good performance, please take care of the faucet as follows;

1. Rinse with water only and dry with soft cotton cloth;
2. Use mild liquid and colorless glass cleaner to remove surface dirt and scale film, or use polish without abrasive effect;
3. Do not use abrasive detergent, polish, emery cloth, paper towel or scraper, etc.;
4. Do not use acid cleaner, or cleaner and soap with insoluble gran etc.;
5. In the process of use, mud may accumulate in the bubbler and make the water flow slow, The bubbler can be unscrewed, rinsed with water, and then installed back in place.



