

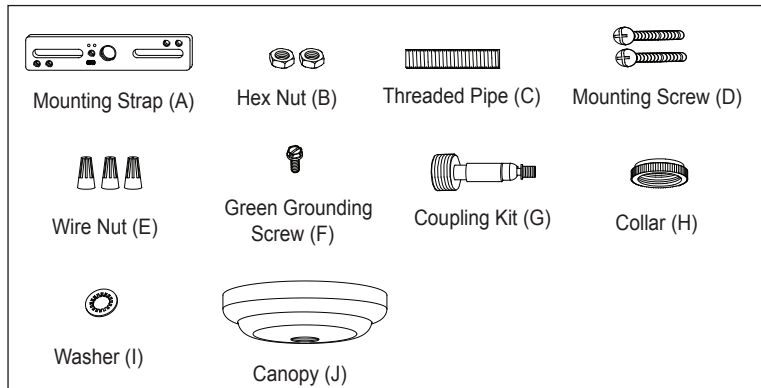
ASSEMBLY AND INSTALLATION INSTRUCTIONS

H0133 / H0134

WARNING: TO AVOID RISK OF ELECTRICAL SHOCK, BE SURE TO SHUT OFF POWER WHILE INSTALLING OR SERVICING THIS FIXTURE.

NOTES: 1. Before installing, consult local electrical codes for wiring and grounding requirements.
2. READ AND SAVE THESE INSTRUCTIONS.

Hardware Package (included):



Installation Steps

Turn off the power at fuse or circuit box.

1. Rod Connections:

- Thread the fixture wire from the fixture through the lower rod, and then secure the lower rod onto fixture using the threaded pipe.
- Thread the fixture wire through the middle rod, and then secure the middle rod onto the lower rod using the threaded pipe.
- Thread the fixture wire through the upper rod, and then secure the upper rod onto the middle rod using the threaded pipe.

Note: Length adjustable from 28-1/4" to 82-1/4". Use fewer rods if shorter length is desired.

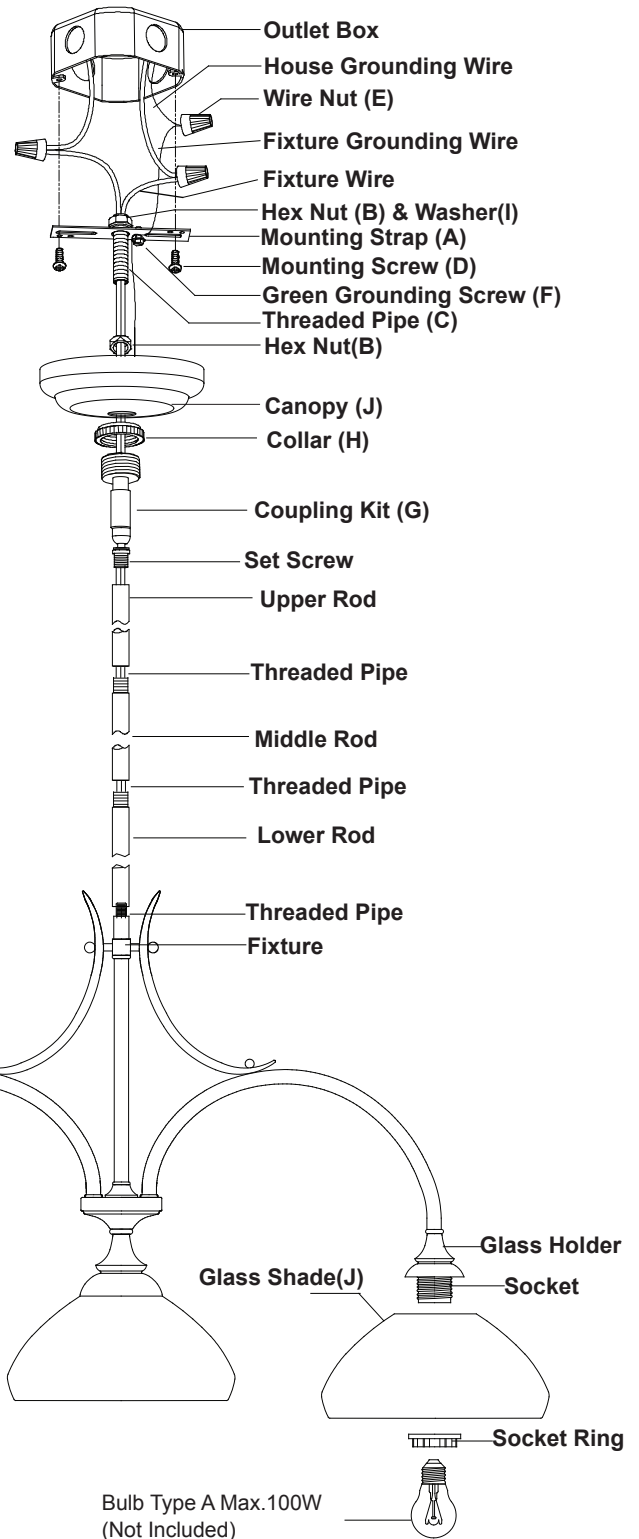
- Thread the fixture wire through the coupling kit, collar, canopy, then secure the rod assembly to the coupling kit using set screw.

- Thread the fixture wire through the threaded pipe, hex nut and mounting strap. Install the hex nut onto one end of the threaded pipe leaving about 3/8" (10mm) thread exposed. Install same end of threaded pipe by screwing into coupling kit, secure threaded pipe by tightening hex nut.

- Attach the threaded pipe to the mounting strap, then secure it with hex nut.

- Attach the mounting strap to outlet box by using two mounting screws.

- Pull out the source wires from the outlet box. Make wire connections using wire nuts as follows:
---Connect the smooth-coated wire (marked) from the fixture to the black wire from the power source.



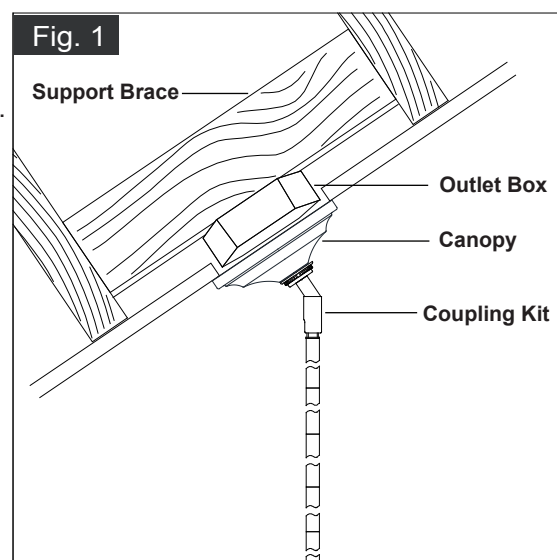
VAXCEL

141126

- Connect the ribbed-coated wire (unmarked) from the fixture to the white wire from the power source.
- Attach the fixture grounding wire to the mounting strap with the green grounding screw. Then connect it to the house grounding wire with a wire nut. Carefully put the wires back into the outlet box.

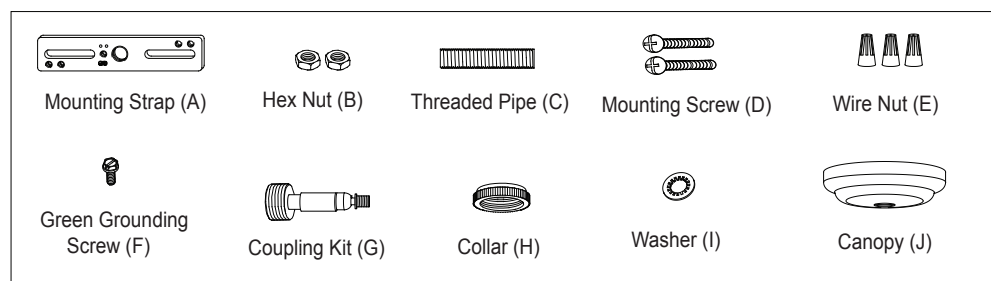
- Attach the canopy to the mounting strap, and secure it with collar.
- Attach the glass shades onto the glass holders, secure them with socket rings.
- Install bulbs (not included). See relamping label at socket area or packaging for maximum allowed wattage.
- Angled mounting recommended for a vaulted or angled ceiling. (See Fig. 1)**

Turn on the power at fuse or circuit box.



The following parts are available for re-order if damaged or missing.

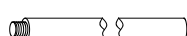
Spare Parts List:



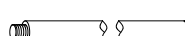
→ Mounting Hardware
5243MM for H0133
5244MM for H0134



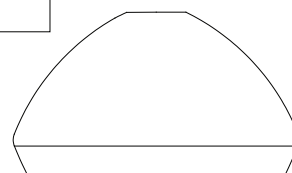
12"Rod
3023RD for H0133
3026RD for H0134



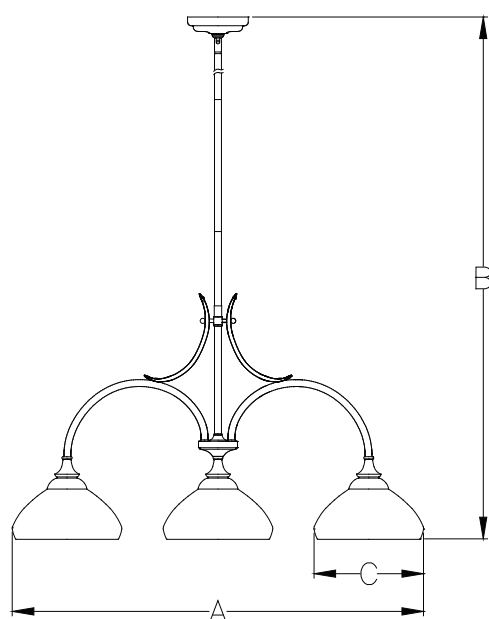
6"Rod
3022RD for H0133
3025RD for H0134



3"Rod
3021RD for H0133
3024RD for H0134



Glass Shade 9686FO



A: 37-1/2"

B: 28-1/4" ~ 82-1/4"

C: 10"