

ELEMENTS™ ALUMINUM STAIR INSTALLATION

PRIOR TO INSTALLING STAIRS:

Please consult local zoning laws in regards to load requirements, overall height requirements, and bottom space requirements for rails. All supporting structures must be in accordance with applicable building codes. Neighborhood associations and/or historic districts may regulate size, type, placement and type of railing. Apply for permits if required by local authorities and codes. Ensure compliance prior to installation. Local building code requirements will always supersede any and all suggested procedures and measurements in the following installation. The following installation instructions are intended as a general guideline based on common building practices used in railing installation.

TOOLS REQUIRED

- Power drill
- 1/8-in drill bit (for optional pilot hole pre-drilling)
- Snips or saw (for cutting plastic spacer clips)
- Tape measure
- Plumb bob or level
- Saw for cutting aluminum
- Screwdriver or power drill for T25 Torx screws (bit included)
- Pencil

- Safety glasses
- Wrench or ratchet (for post fasteners)
- Optional urethane caulk for high salt water content areas
- Optional PVC adhesive for baseplate cover
- Hearing protection (for saw)

KIT CONTENTS

- (1) 6-ft Top Rail
- (1) 6-ft Bottom Rail
- (1) Crush Block
- (12) 5/8-in Balusters
- (15) Spacer Clips
- (12) #10 x 3/4-in Torx Screws (bit included)
- (1) Instruction Sheet

TIPS

The most recent installation instructions can be found on our website. Please visit www.fiberondecking.com or call customer service at 800-318-7828.

STAIR BRACKET INSTALLATION

Step 1: Lay Out the Stair Posts and Stair Rails

For stair installation, loosely mount the stair posts and set out the stair rails. To determine the stair bracket location, lay the bottom stair rail on top of the stairs/nosing and, using the top of the bottom stair rail as a guide, make an initial mark with a pencil onto the upper post and the lower post (Figure 1). From the mark you made on the UPPER post (the post at the top of the stairs), measure and draw a horizontal line 3/8-in below the mark. From the mark you made on the LOWER post (the post at the bottom of the stairs), measure and draw a horizontal line 3/4-in above the mark.

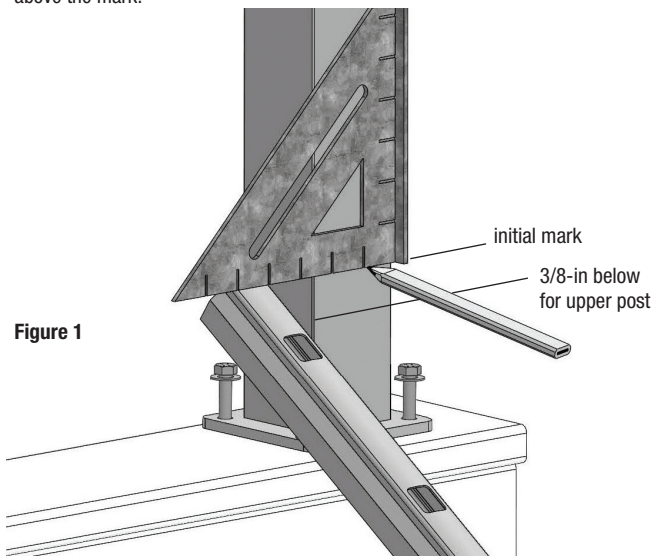


Figure 1

Step 2: Install Bottom Stair Bracket

Locate the TOP edge of the backing plate for the bottom stair bracket along the horizontal line. Take care to ensure the backing plate is centered on the post, with the two mounting holes lined up on top of each other. Mark the center of the two mounting holes located inside the backing plate against the post (Figure 2).

Optional: Pre-drill the marked holes with a 1/8-in drill bit.

Locate the backing plate over the marked or pre-drilled mounting holes, and install two #10 x 3/4-in screws through the backing plate and into the aluminum post (Figure 3). Do not overtighten screws.

NOTE: If installing into a wood post, install using two #12 x 2-in pan head screws.

Slide the bottom rail end cap into the backing plate. Secure with two #10 x 1/2-in screws through the backing plate holes and into the bottom rail cap's pre-drilled holes (Figure 4). A third #10 x 1/2-in screw is supplied to fill the end cap's top pre-drilled hole, if so desired.

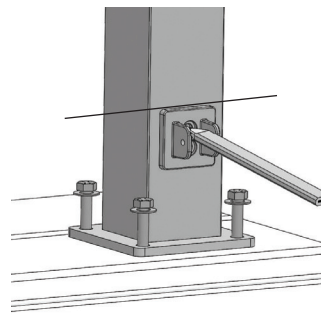


Figure 2

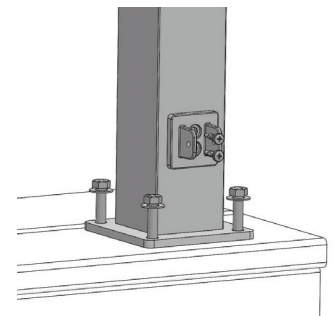


Figure 3

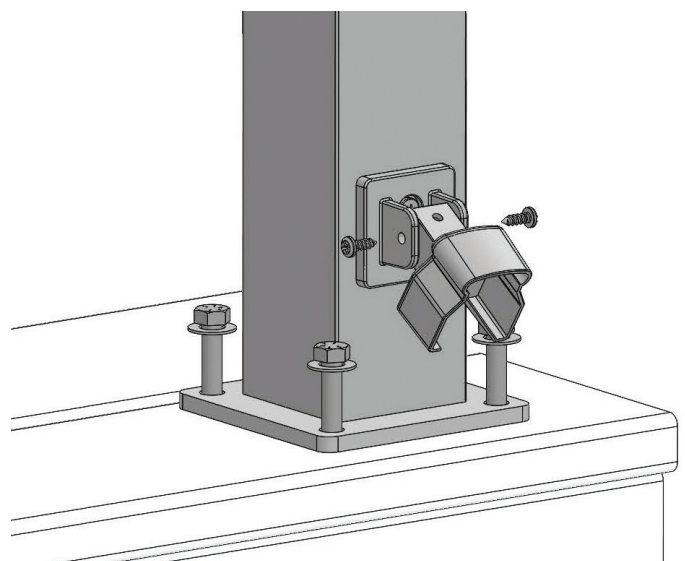


Figure 4

STAIR INSTALLATION (CONTINUED)

Step 3: Install Top Stair Bracket

Measure up 30 1/8-in from the top of the installed bottom backing plate and make a horizontal line with a pencil onto the post (Figure 5). Locate the BOTTOM edge of the backing plate along the horizontal line. Take care to ensure the backing plate is centered on the post, with the two mounting holes lined up on top of each other. Mark the center of the two mounting holes located inside the backing plate against the post.

Optional: pre-drill the marked holes with a 1/8-in drill bit.

Locate the backing plate over the marked or pre-drilled mounting holes, and install two #10 x 3/4-in screws through the backing plate and into the aluminum post. Do not overtighten screws.

NOTE: If installing into a wood post, install using two #12 x 2-in pan head screws.

Slide the top rail end cap into the backing plate. Secure with two #10 x 1/2-in screws through the backing plate holes and into the top rail cap's pre-drilled holes (Figure 6). A third #10 x 1/2-in screw is supplied to fill the end cap's top pre-drilled hole, if so desired.

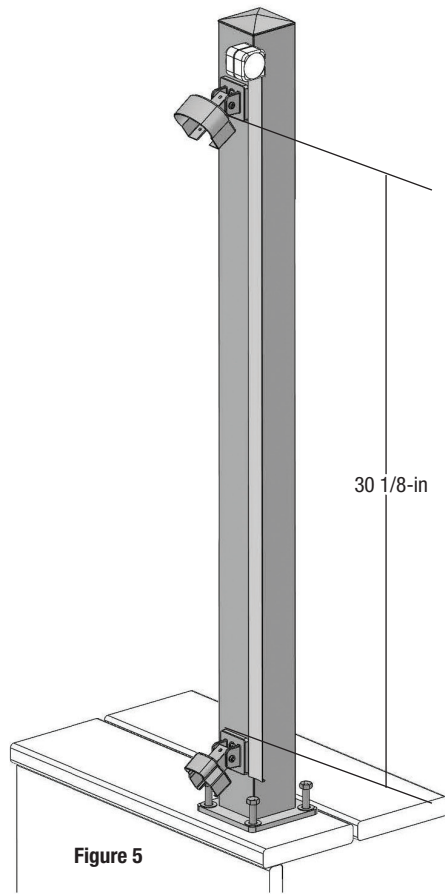


Figure 5

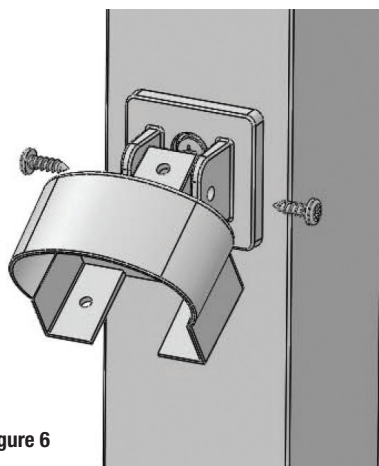


Figure 6

Step 4: Cutting Top and Bottom Rails

Following the stair angle and with posts held plumb, measure between the back of the installed stair bracket end caps. Deduct 1/2-in from this measurement and cut top rail to length. Before cutting the bottom rail to the same length as the top rail, make sure the hole pattern is centered with the pre-cut baluster holes equal distance from each end. Do not make cuts to match the stair angle; cut at 90 degree angle (Figure 7).

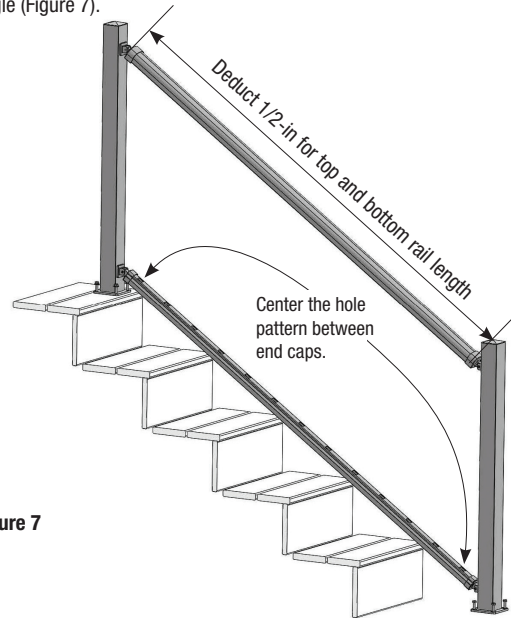


Figure 7

Step 5: Install Bottom and Top Rails into Stair Brackets

Loosen posts to install bottom rail into bottom stair brackets. With bottom rail in place, install top rail into top stair brackets (Figure 8). Plumb and tighten post. Secure stair rails with #10 x 3/4-in screws (Figure 9).

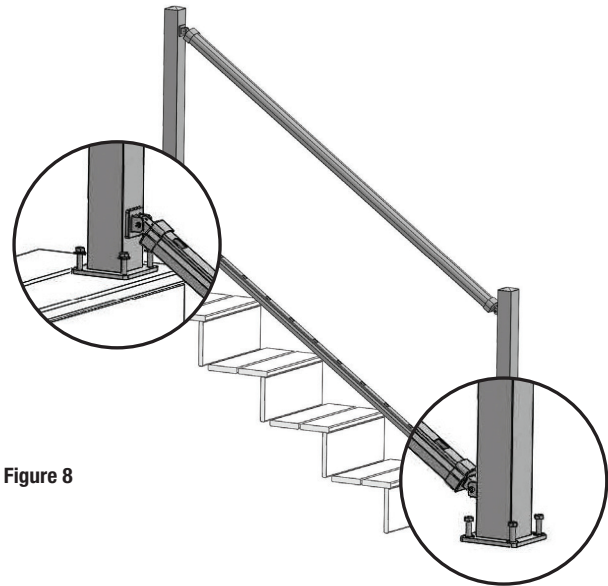


Figure 8

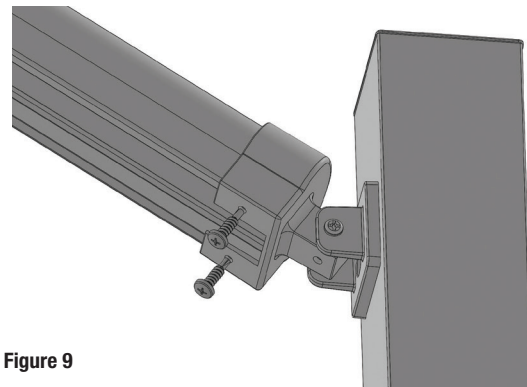


Figure 9

STAIR INSTALLATION (CONTINUED)

Step 6: Install Stair Balusters

Starting from the bottom of the stairs, install one baluster into the bottom rail so it is plumb with the bottom post. Measure the opening size for the first spacer clip, cut it and install into underside of top rail (Figure 10). Continue adding a baluster then a spacer clip until you've installed the last baluster. Measure the last opening then measure, cut and install the last spacer clip (Figure 11).

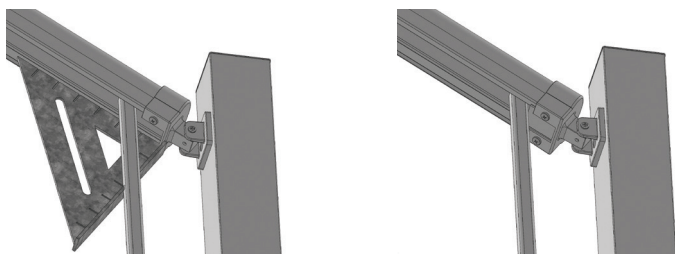


Figure 10

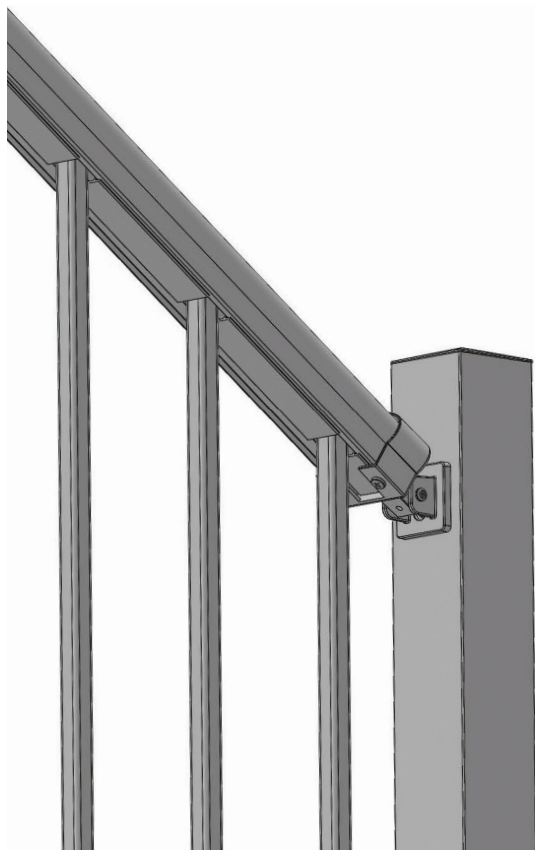


Figure 11

Step 7: Fasten Bottom Rail Crush Block

Fasten bottom rail crush block to the bottom rail with (1) #10 x 3/4-in screw (Figure 12).

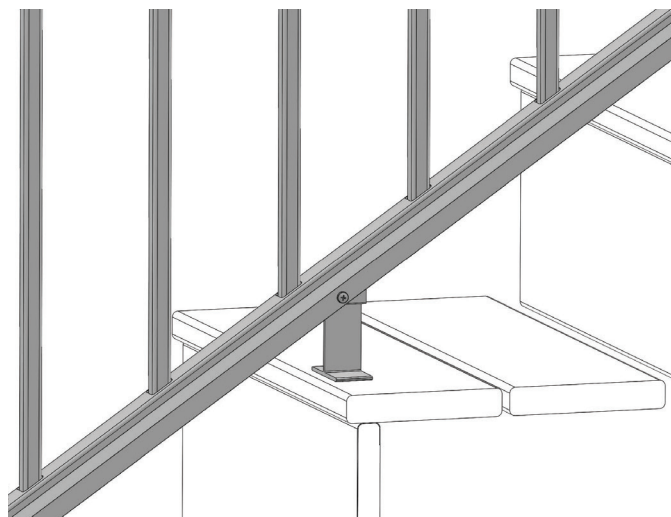


Figure 12

Step 8: Attaching Post Baseplate Cover

After the top and bottom rails and/or stairs have been installed, position both halves of the baseplate cover on either side of the post above the baseplate and below the bottom rail. Align the locking pins on one half to the matching holes on the other half and slide together.

Optional: Apply PVC adhesive to the locking pins prior to sliding halves together for a secure fit (Figure 13).

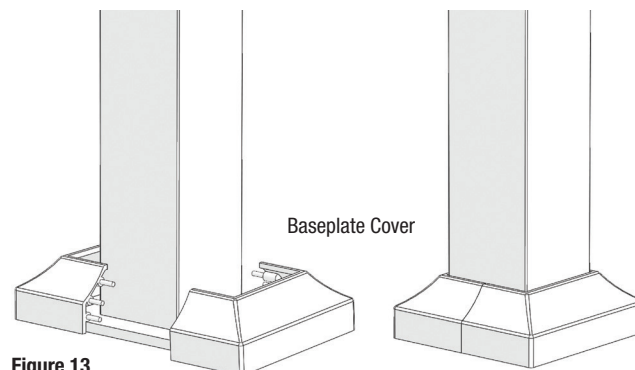


Figure 13

