

# Luvoni

b y Maxxima

## LED Smart WiFi Flushmount Ceiling Light Installation Guide

Works with Standard ON/OFF Switch or Direct Wire Installation



Product name	WiFi LED 12" Double Ring Ceiling Light
Model No.	MCL-9121900DW
Rated Voltage	120VAC
W / LM / CRI	19W / 1300LM / >80
CCT Range	RGB + 2000K - 5000K



Product name	WiFi LED 13" Ceiling Light, Brushed Aluminum Trim
Model No.	MCL-9131925DW
Rated Voltage	120VAC
W / LM / CRI	19W / 1300LM / >80
CCT Range	RGB + 2000K - 5000K



Product name	WiFi LED 13" Mushroom Ceiling Light
Model No.	MCL-9131900DW
Rated Voltage	120VAC
W / LM / CRI	19W / 1300LM / >80
CCT Range	RGB + 2000K - 5000K

### ⚠ WARNINGS AND CAUTIONS

- Risk of fire and electrical shock, products should be installed in accordance with appropriate electrical codes and regulations.
- The product shall be used together with an upstream air-gap switch.
- If you are unsure about any part of these instructions, consult a licensed electrician.
- **DO NOT USE WITH AN IN-WALL DIMMER.** Only Dimmable via the mobile APP.

This device complies with Part 15 of the FCC Rules. Operation is subject to the following two conditions:

- (1) This device may not cause harmful interference, and (2) This device must accept any interference received, including interference that may cause undesired operation.

This equipment has been tested and found to comply with the limits for a Class B digital device, pursuant to part 15 of the FCC Rules. These limits are designed to provide reasonable protection against harmful interference in a residential installation. This equipment generates, uses and can radiate radio frequency energy and, if not installed and used in accordance with the instructions, may cause harmful interference to radio communications. However, there is no guarantee that interference will not occur in a particular installation. If this equipment does cause harmful interference to radio or television reception, which can be determined by turning the equipment off and on, the user is encouraged to try to correct the interference by one or more of the following measures:

- Reorient or relocate the receiving antenna.
- Increase the separation between the equipment and receiver.
- Connect the equipment into an outlet on a circuit different from that to which the receiver is connected.

- Consult the dealer or an experienced radio/TV technician for help.

### FCC CAUTION

Any changes or modifications to this unit not expressly approved by the manufacture could void the user's authority to operate the equipment.

### Mobile APP Set-up

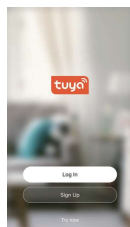
#### Step 1 Download the 'TuyaSmart' App

- Scan the QR code below to download the 'TuyaSmart' App.
- You can also download this app in the App Store/Android App Market search "TuyaSmart".



#### Step 2 Register an account and Login

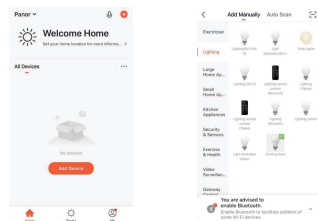
- Open the TuyaSmart App, click Register to create an account & login.
- If already Registered, login.



in the top right-hand corner

#### Step 3 Selecting the Device

- Click 'Add Device' or the '+' in the top right-hand corner;
- Click 'Lighting' then 'Light Source (Wi-Fi)' to enter the device connection interface.

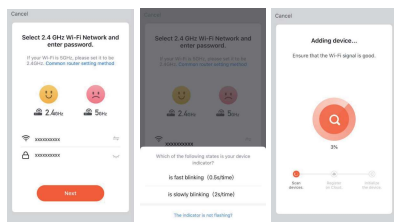


#### Step 4 Mobile phone connection

##### Step 4a EZ mode connection:

When the Ceiling Light is on, switch the on/off switch 3 times (each interval within 1s) Off, On, Off, On, Off, On, Off, On. The light will flash quickly (flash once every second), your device can connect to the light. The light will stop flashing once when the connection is successful. If there is no connection, device will exit network configuration mode after 3 min.

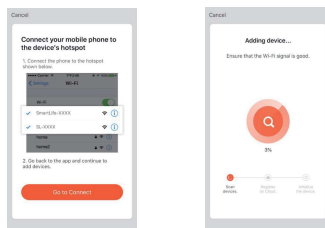
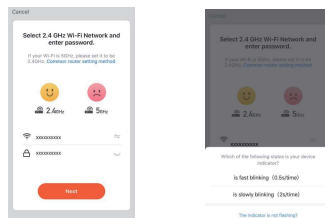
- Enter the Network Name & Wi-Fi password for your home, click Next.
- Confirm the light is flashing, click device indicator is 'fast blinking (0.5S/time)';
- Device will Connect.



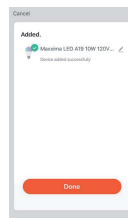
#### Step 4b AP mode connection:

When the Ceiling Light is flashing quickly; turn the light off. Repeat turn the on/off switch 3 times to make the light flash slowly. The light will flash slowly (flash once every 2-3s), your phone can connect to the light. The light will stop flashing once when the connection is successful. If there is no connection, the device will exit network configuration mode after 3 min.

- Enter the Wi-Fi Network and password for your home, click 'Next'.
- Click 'EZ Mode' in the upper corner to switch the interface to 'AP Mode'.
- Confirm the light is blinking slowly, flashes slowly, click 'Next'.
- Back out of the APP, go to Wi-Fi Networks in Settings, connect to the device Wi-Fi - 'SmartLife-XXXX'.
- Return to the TuyaSmart App, wait for the connection to complete.

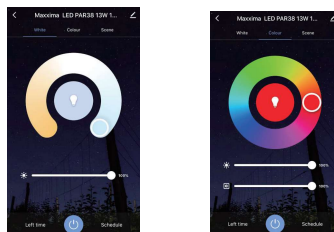


- Click 'Done' to enter the operation interface.

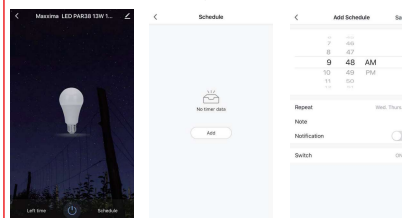


### Mobile APP operation

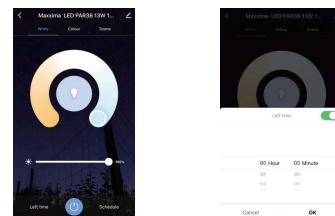
- Select White to adjust the CCT and to Dim.
- Select Color to adjust to the desired color, to Dim and adjust Contrast.



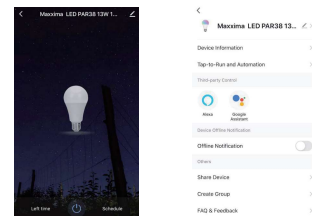
- Click 'Schedule' to set a on or off function of the light at a certain time/day(s).
- Add schedule and then save, Repeat as desired.



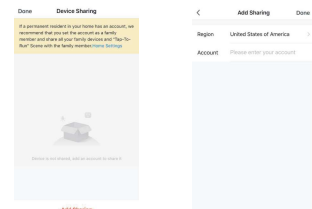
- Select 'Left Time' to enable Countdown Timer when Light is on. The time selected will automatically turn the light off after the desired time.



- After the light connection is completed, it can be shared to many people, that is, one light can be controlled by multiple Users.
- Click 'Add' to enter the device details interface;
- Click 'Share Device' to enter the device sharing interface.



- Click 'Add Sharing', add the account you are willing to sharing.



- You may also share all devices in your account with another account.
- Go to 'Me' at the bottom of the App.
- Select 'Home Management'.
- Select the Home you wish to share.
- Select 'Add Member'. You can send invite via TUYA account, Message or Email. New Member must have or create a TUYA Account via the TUYA Smart App.

### Support Amazon Alexa and Google Home Set-up

#### For Amazon Alexa

- Open Alexa App and select 'Skills' from the top menu.
- On the Skills Page, search for TUYA Smart.
- Enable TUYA Smart in the Alexa App.
- Log in with your TUYA Smart account (username & password)
- Discover new smart devices in the App or ask Alexa to Discover new devices.

#### For Google Home

- Open Google Home App, tap '+' icon in the homepage.
- Select 'Set up device' in the 'Add and manage' screen.
- In the 'Set Up' screen, tap 'New Devices' to set up new devices in your home.
- Tap 'Works with Google' to authorize Google Home to work with your TUYA Smart account.

### Amazon Alexa and Google Home voice control examples

#### For Amazon Alexa

- Alexa, turn on <device name>
- Alexa, turn off <device name>
- Alexa, set <device name> to percent
- Alexa, brighten/increase <device name>
- Alexa, dim/decrease <device name>

#### For Google Home

- Hey Google, turn on <device name>
- Hey Google, turn off <device name>
- Hey Google, is <device name> on/off?
- Hey Google, brighten/increase <device name>
- Hey Google, Dim/Brighten <device name> by 50%

### Trouble-Shooting / Recommendations / Tips

- If the light is offline in the App, make sure the in-wall switch is in the On position. If not, turn on.
- Please check whether the light is connected with power, and your mobile device is connected to a 2.4GHz WiFi Network.
- Check the router. If the router is dual-band, make sure to select 2.4GHz network to add the light. Router Broadcast should be set to open.
- Make sure the WiFi User Name and Password are correct.
- Make sure the light is within the range of the router signal. If not, try moving closer to the router. Check WiFi signal on the mobile device to make sure the signal is strong in that area or if it is weak.
- Check to see if the maximum number of devices/lights the router can handle has been reached. If so, remove a device/light and restart the router. If there is no WiFi connection, try restarting the light and/or restarting the router.
- If the device will not go into pairing mode, try the on/off sequence 4 or 5 times instead of 3 times. Also give a second or 2 longer delay between the on/off sequence.
- If the internet signal/connection from the internet provider is down, the light can still be controlled through the mobile device as long as both are connected to the same Network (Intranet).

## 3 YEAR WARRANTY

Maxxima extends a 3 year limited warranty to the original purchaser that the products listed are free from defects in material and/or workmanship only. Maxxima will replace any warranted product to the original consumer/purchaser if the product fails because of defects due to workmanship and/or materials within the limited warranty period. Limited warranty is not transferable and applies to the original installation of the Maxxima product. This offer does not constitute in any way a product guarantee and Maxxima does not hereby assume any obligation whatsoever beyond sending a free replacement product.

✉ info@maxximastyle.com

☎ 866-MAXXIMA (629-9462)

🌐 www.maxximastyle.com

📍 125 Cabot Court Hauppauge, NY 11788

# INSTALLATION OR ASSEMBLY INSTRUCTIONS

## ⚠ WARNINGS ⚠

- Risk of electric shock - Disconnect power at the source before installation.
- If you are unsure about the installation or the maintenance of the wall light, please consult an electrician.
- Do not make or alter any holes in the wiring enclosure or modify any electrical componentry.

## ⚠ CAUTIONS ⚠

- To insure personal safety, proper grounding of the electrical fixture is required.
- The fixture must be wired in accordance with the National Electric Code and applicable local codes or ordinances.

## INSTALLATION INSTRUCTIONS

### Canopy Installation

1. Shut off power at the circuit breaker or fuse before installation.
2. If you are replacing an existing fixture, remove and disconnect the old fixture first.
3. Remove the inner diffuser by removing the two screws holding it to the canopy.
4. Expose the power supply wires from the junction box.
5. Connect the green fixture ground wire to the junction box ground wire by using a wire nut.
6. Connect the white fixture neutral wire to the junction box white neutral wire by using a wire nut.
7. Connect the black fixture hot wire to the junction box hot wire by using a wire nut.
8. Align the canopy base over the mounting screw holes on the junction box.
9. Thread the mounting screws through the slots in the canopy that aligns with the junction box mounting holes.
10. Adjust the canopy until the screws are at the small end of the keyhole slots.
11. Ensure that the wires are placed properly within the junction box.
12. Tighten the mounting screws until the canopy base is snugly seated against the ceiling.
13. Replace the inner diffuser by replacing the two screws previously removed in step 3.

### Diffuser Installation

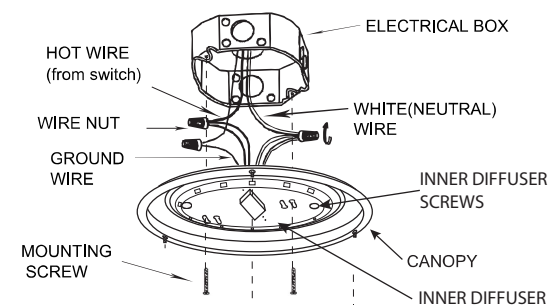
**Model: MCL-9121900DW**

1. Place the diffuser on the canopy. Then place the metal ring on the diffuser. Let the 4 screws from the ring mount tubes protrude through the holes in the metal ring.
2. Twist the 4 decorative nuts onto the ring mount tubes to secure the ring and diffuser.
3. The installation is complete. Restore power to the fixture and verify the fixture operates properly.

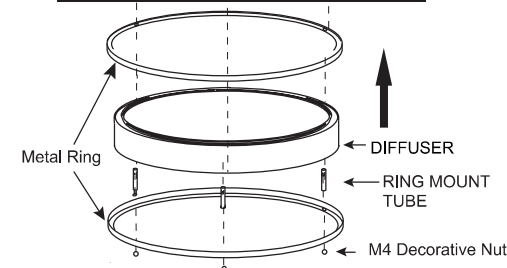
**Model: MCL-9131925DW & MCL-9131900DW**

1. Align canopy tabs to diffuser slots
2. Slide diffuser down into canopy and rotate clockwise to secure into position.

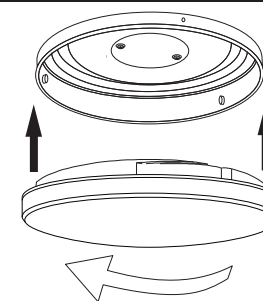
Luvoni  
by Maxxima



### MCL-9121900DW Diffuser Installation



### MCL-9131925DW & MCL-9131900DW Diffuser Installation



## 3 YEAR WARRANTY

Maxxima extends a 3 year limited warranty to the original purchase that the products listed are free from defects in material and/or workmanship only. Maxxima will replace any warrantied product to the original consumer/purchaser if the product fails because of defects due to workmanship and/or materials within the limited warranty period. Limited warranty is not transferable and applies to the original installation of the Maxxima product. This offer does not constitute in any way a product guarantee and Maxxima does not hereby assume any obligation whatsoever beyond sending a free replacement product.