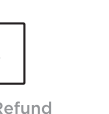
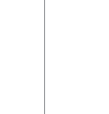


NOTICE

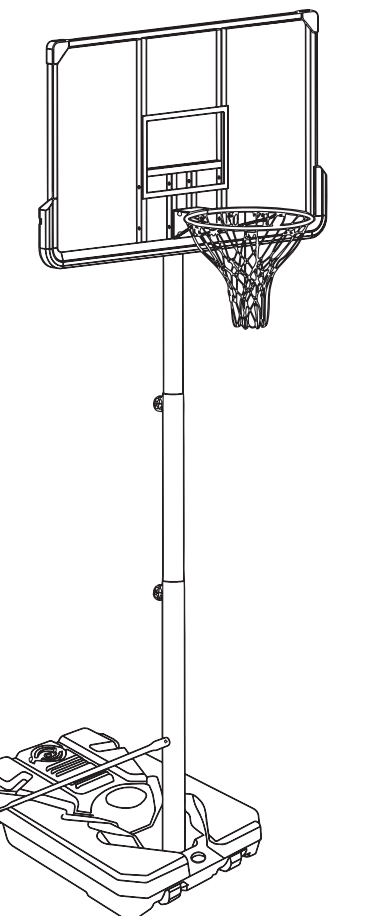
- Please read all instructions before attempting to install or assemble this item. Assembly should be done by adults only.
- Firmly secure all screws before use.
- Reconfirm that all bolts, screws, and knobs are secure every 90 days.
- Product is intended for outdoor use.
- If any parts are missing, broken, damaged, or worn, stop using this item until repairs are made and/or factory replacement parts are installed.
- Do not use this item in a way inconsistent with the manufacturer's instructions as this could void the product warranty.

CAUTION DURING USE

- Do not hang from the rim or climb on the pole. Do not climb on the base or structure in general, as this could result in serious injuries.
- Adjustment and moving of the basketball set must be carried out by adults.
- Always check the unit to ensure the base is full of water or sand, and that all fittings and hardware are tight before each use.
- Always place the base of the set on a flat surface.
- Do not allow water to freeze in the base.
- The set requires two people for assembly.
- Check the base regularly for any leakage before playing.



Portable Basketball System USER MANUAL



尺寸: 148.5x210 mm

印刷: 单黑双面印刷

装订方式: 骑马钉装

Thank you for purchasing the Portable Basketball System. Please read this user manual carefully and keep it in a safe place for future reference. If you need any assistance, please contact our support team with your product model number and Amazon order number.

Important Safety Precautions

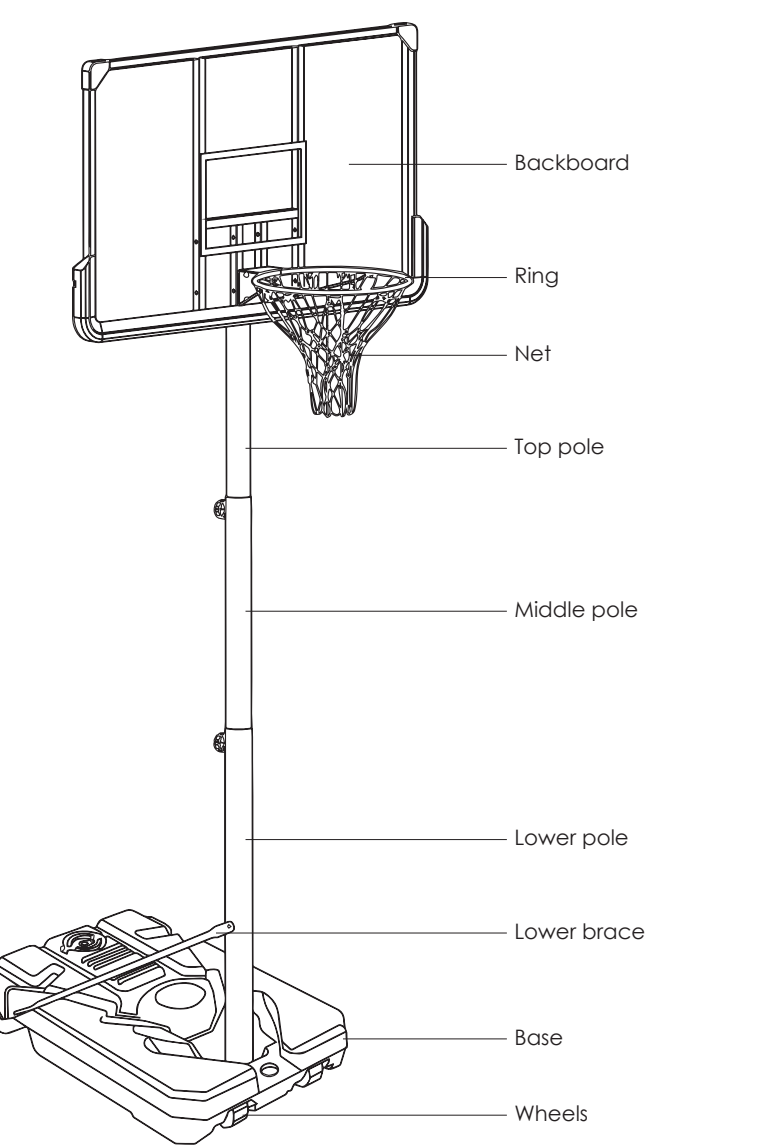
Notice:

01. Please read all instructions before attempting to install or assemble this item. Assembly should be done by adults only.
02. Firmly secure all screws before use.
03. Reconfirm that all bolts, screws, and knobs are secure every 90 days.
04. The product is intended for outdoor use.
05. If any parts are missing, broken, damaged, or worn, stop using this item until repairs are made and/or factory replacement parts are installed.
06. Do not use this item in a way inconsistent with the manufacturer's instructions as this could void the product warranty.
07. Do not hang from the rim or climb on the pole. Do not climb on the base or structure in general, as this could result in serious injuries.
08. Adjustment and moving of the basketball set must be carried out by adults.
09. Always check the unit to ensure the base is full of water or sand, and that all fittings and hardware are tight before each use.
10. Always place the base of the set on a flat surface.
11. Do not allow water to freeze in the base.
12. The set requires two people for assembly.
13. Check the base regularly for any leakage before playing.

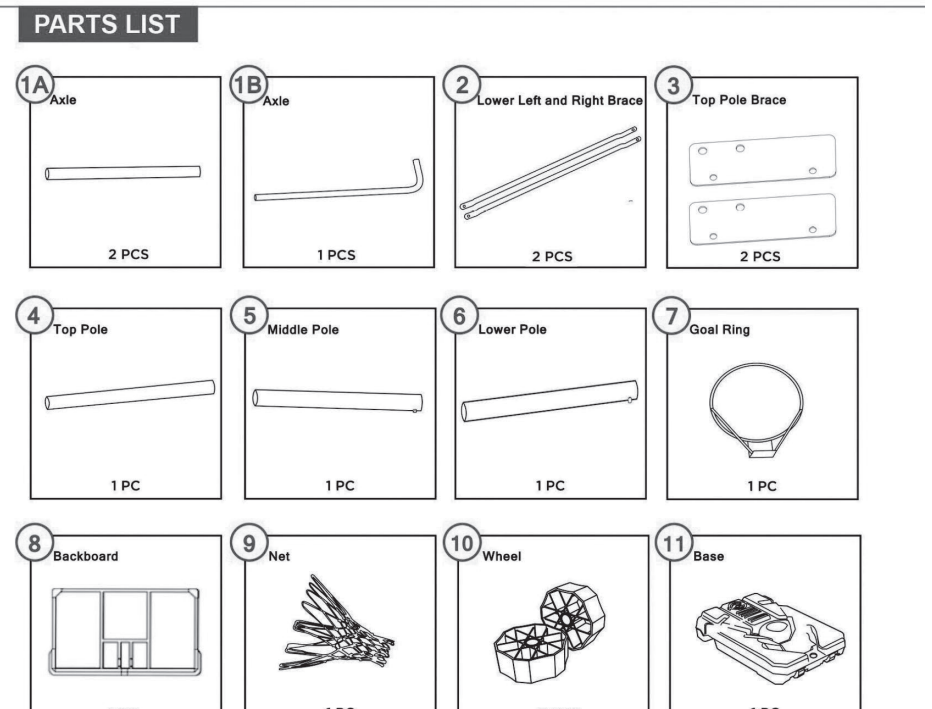
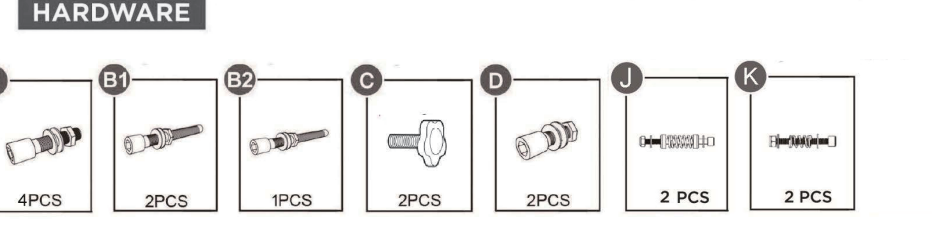
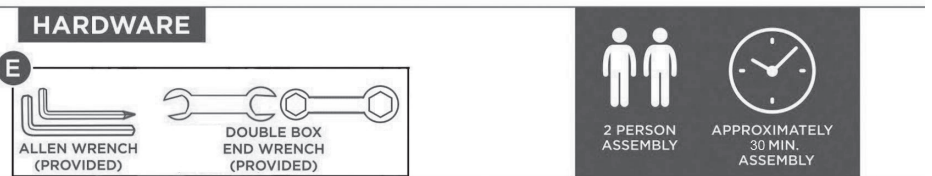
Basketball Maintenance

14. Please check the degree of corrosion and firmness of the connection and welding parts twice a year. When abnormalities such as looseness and rust are found, repair and anticorrosive treatment should be performed in time.
15. The surface of the ball rack should be cleaned with a neutral detergent to avoid damaging the surface of the ball rack plastic powder.

Product Design

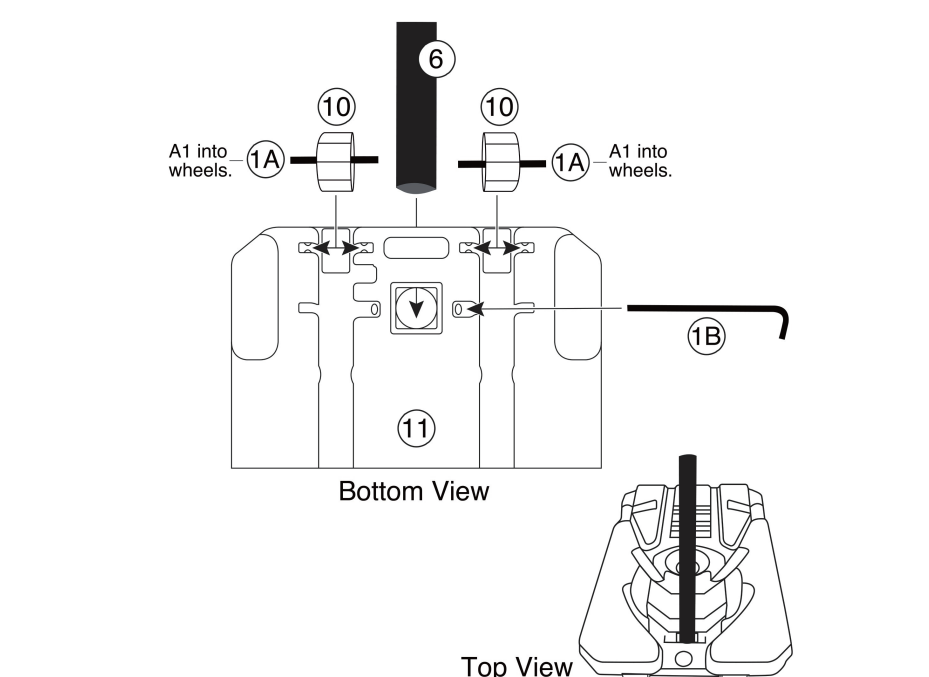


PRODUCT ASSEMBLY



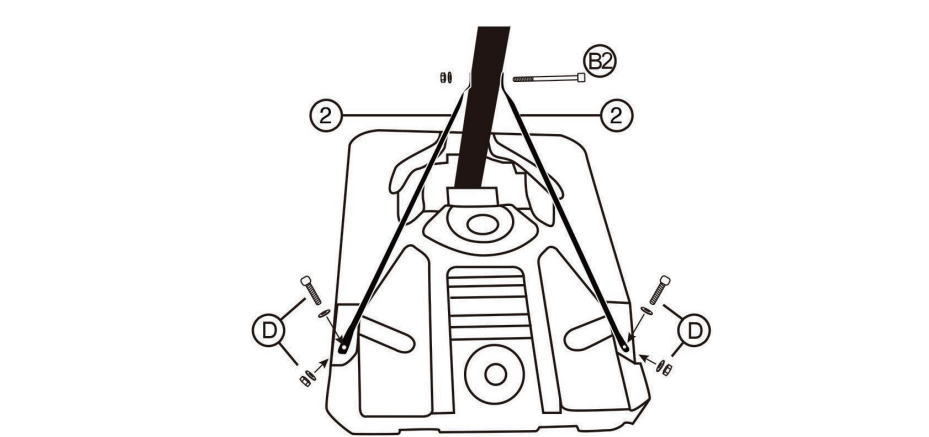
STEP1

Insert Axes (#1A) into the Wheels (#10) as shown. Next press wheels into the Base (#11). Place the Lower pole (#46) into the top side of the Base (#11) and place into position in the base and slide Axis (#18) through holes on the bottom of the base.



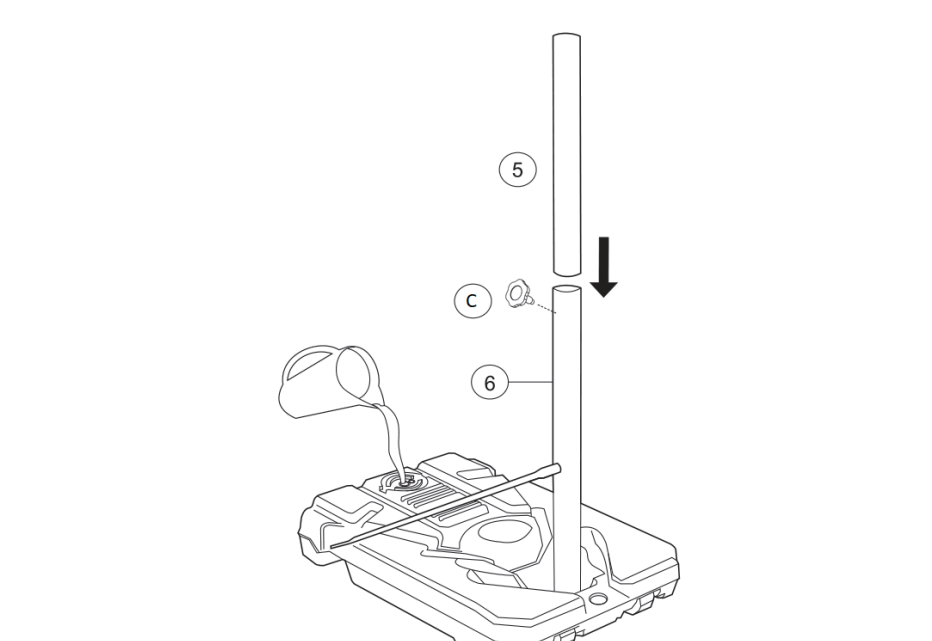
STEP2

Firstly, fix the Lower Left and Right Braces (#2) with bolts, nuts and washers (#4D) to the bottom of the base. Next, lock the Lower Left and Right Braces (#2) to the Lower Pole (#46) with Bolt, Nut and Washer (#4D).



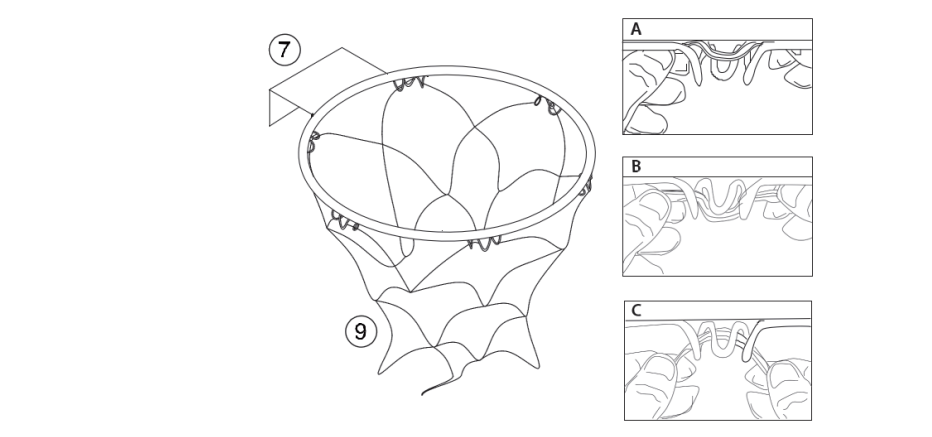
STEP3

a: Insert the Middle Pole (#45) into the Lower Pole (#46).
b: Fix the Lower Pole (#46) and the Middle Pole (#45) with the telescopic knob (#4C).
Note: You only need to partly rotate the knob (#4C) to adjust the height. The knob is supposed to face towards the back.



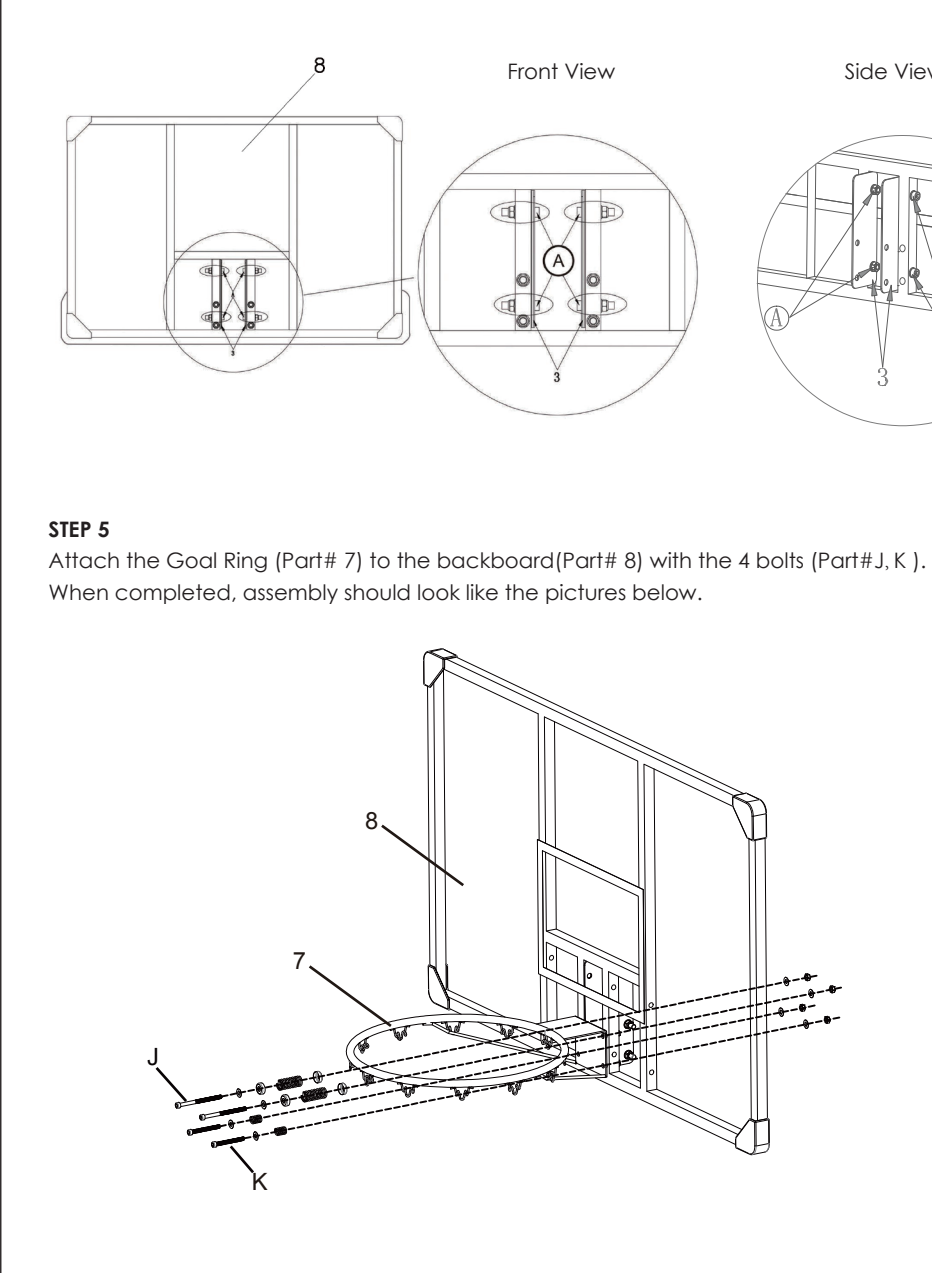
STEP4

Lock the Top Pole Braces (#3) to the Backboard (#8) with Bolts, Nuts and Washers (#4A), and then tighten them.



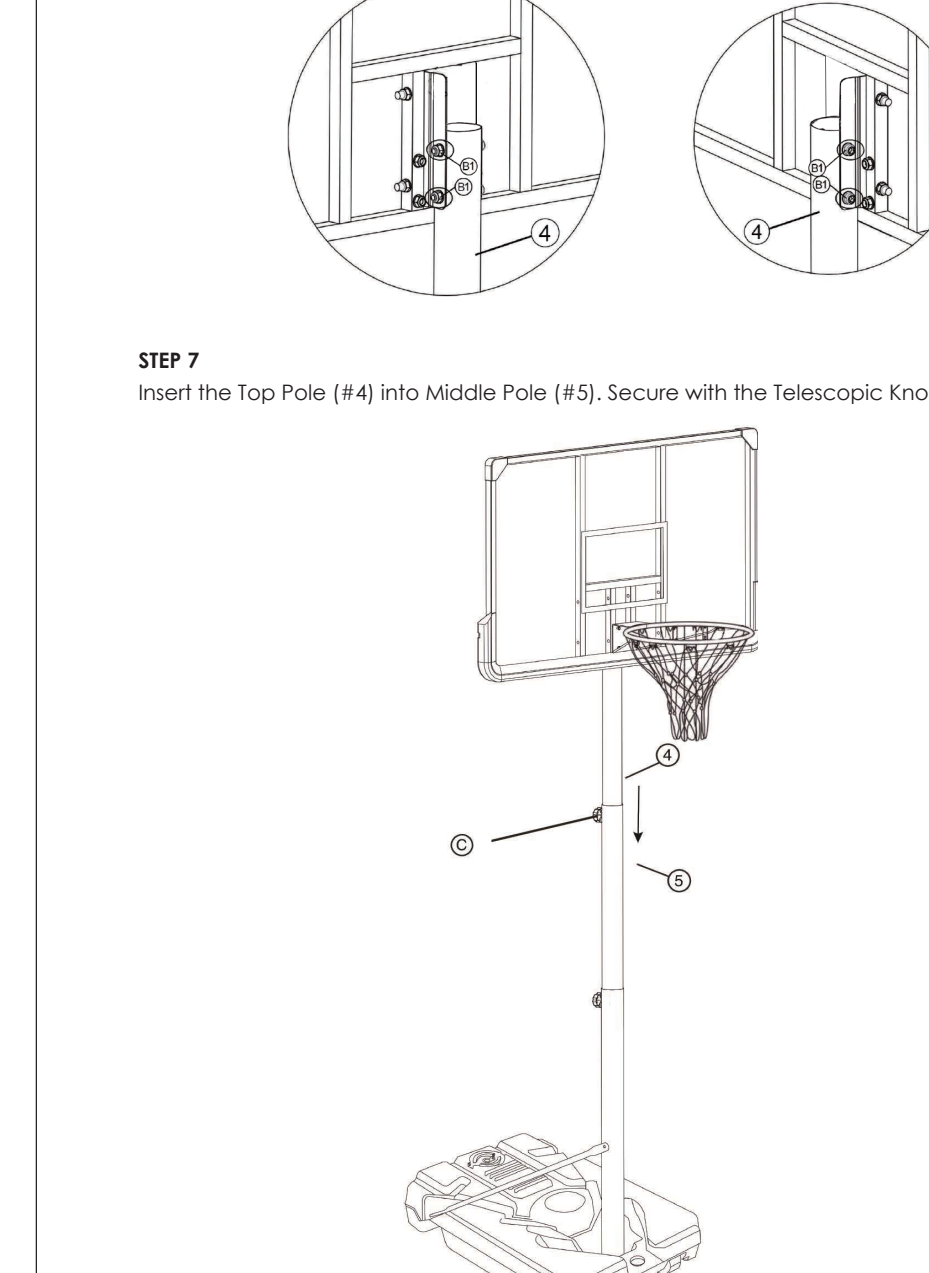
STEP5

Attach the Goal Ring (Part# 7) to the backboard (Part# 8) with the 4 bolts (Part# J, K). When completed, assembly should look like the pictures below.



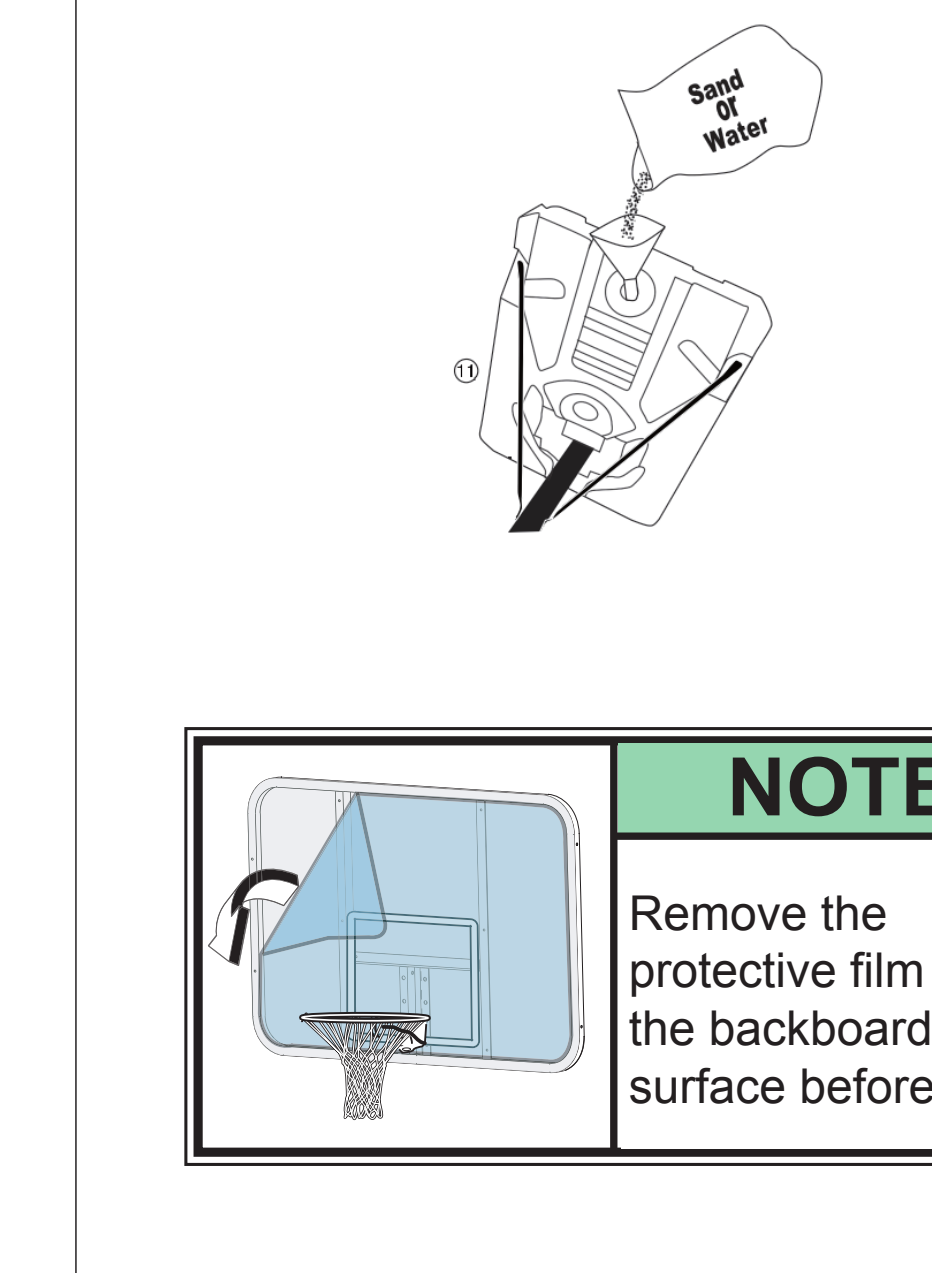
STEP6

Fix the Top Pole (#44) to the Top Pole Braces (#3) with 2 sets of Bolts, Nuts and Washers (#B1).



STEP7

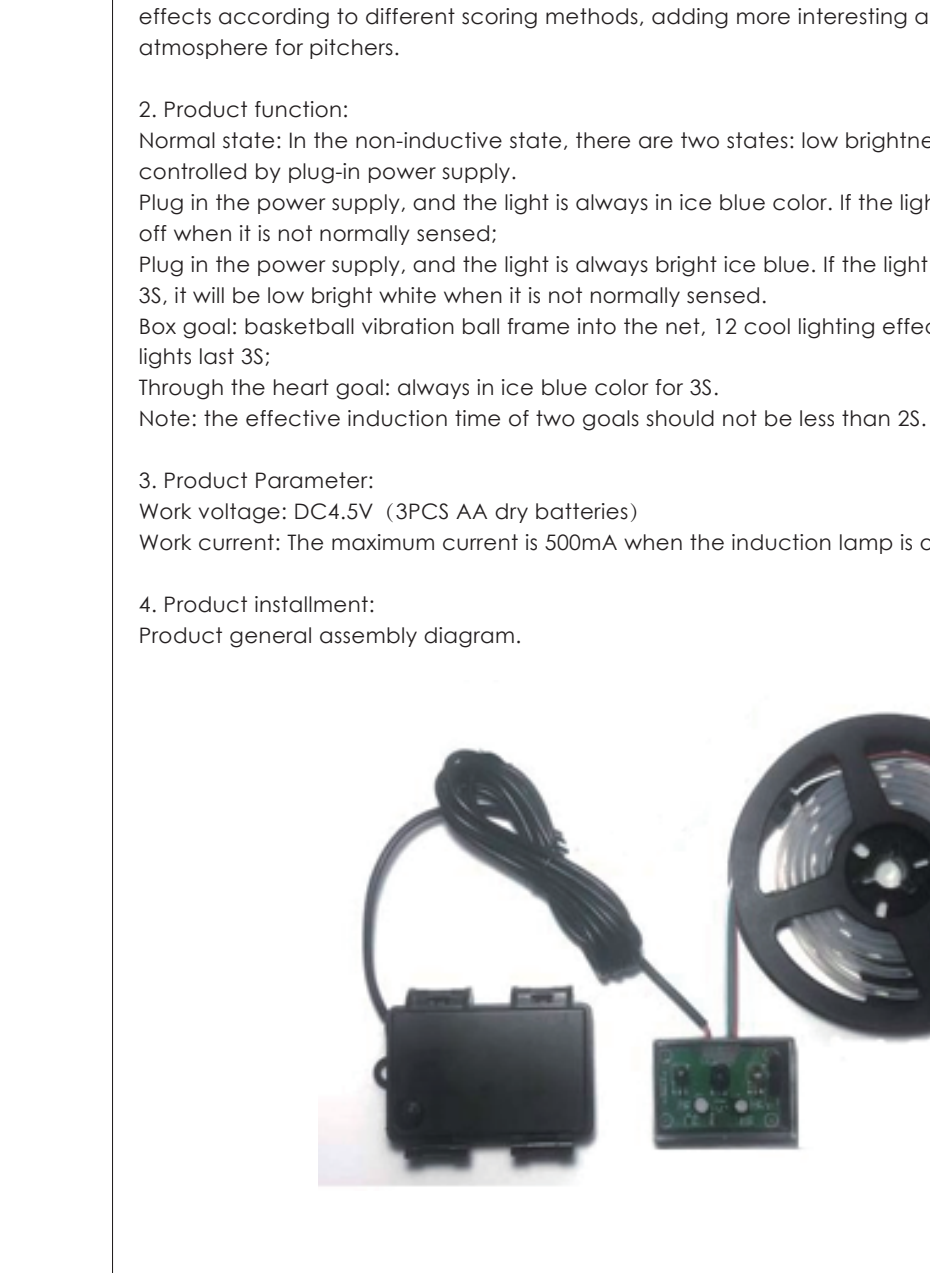
Insert the Top Pole (#44) into Middle Pole (#45). Secure with the Telescopic Knob (#4C).



STEP8

REMINDER

Please tighten all the nuts & Telescopic Knobs. Add sand or water to the base to make the basketball equipment stable.



COOL INDUCTIVE LED FOR BASKETBALL RING

1. Brief introduction:

This led product is the auxiliary device of basketball frame. It presents different cool lighting effects according to different scoring methods, adding more interesting and fun sports atmosphere for pitchers.

2. Product function:

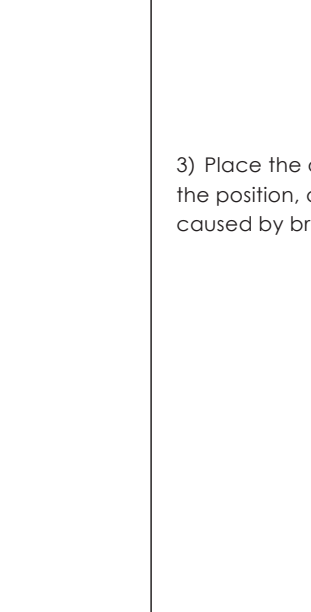
Normal state: In the non-inductive state, there are two states: low brightness white light and no light, controlled by plug-in power supply.
Plug in the power supply, and the light is always in ice blue color. If the light is off after 3S, it will be off when it is not normally sensed.
Box goal: basketball vibration ball frame into the net. 12 cool lighting effects in turn, each mode lights last 3S.
Note: the effective induction time of two goals should not be less than 2S.

3. Product Parameter:

Work voltage: DC4.5V (3PCS AA dry batteries)
Work current: The maximum current is 300mA when the induction lamp is on for 3S.

4. Product installation:

Product general assembly diagram.



1) surround the LED light belt around the basketball metal frame with the light bead facing out. Try to keep the light strip on the lower edge of the basketball hoop to reduce the probability of basketball impact.

2) Two side 3M adhesive tape with one side pasted with induction control box.

3) Place the other side flat on the bottom of the basketball hoop and the backboard. In the middle of the position, and try to keep the sensor and the hoop as far away as possible to prevent misjudgment caused by brushing the frame.

4) install 3 AA batteries into the battery box, and stick the back of the battery box with strong 3M tape

5) Stick the battery box to the basketball frame post with 3M tape.

6) Press the switch, the LED can work normally.

Tip: If you do not use this product, please turn off the battery box switch to prevent self-power consumption.

8) The light strip on the lower edge of the basketball hoop to reduce the probability of basketball impact.

9) The light strip on the lower edge of the basketball hoop to reduce the probability of basketball impact.

10) The light strip on the lower edge of the basketball hoop to reduce the probability of basketball impact.

11) The light strip on the lower edge of the basketball hoop to reduce the probability of basketball impact.

12) The light strip on the lower edge of the basketball hoop to reduce the probability of basketball impact.

13) The light strip on the lower edge of the basketball hoop to reduce the probability of basketball impact.

14) The light strip on the lower edge of the basketball hoop to reduce the probability of basketball impact.

15) The light strip on the lower edge of the basketball hoop to reduce the probability of basketball impact.

16) The light strip on the lower edge of the basketball hoop to reduce the probability of basketball impact.

17) The light strip on the lower edge of the basketball hoop to reduce the probability of basketball impact.

18) The light strip on the lower edge of the basketball hoop to reduce the probability of basketball impact.

19) The light strip on the lower edge of the basketball hoop to reduce the probability of basketball impact.

20) The light strip on the lower edge of the basketball hoop to reduce the probability of basketball impact.

21) The light strip on the lower edge of the basketball hoop to reduce the probability of basketball impact.

22) The light strip on the lower edge of the basketball hoop to reduce the probability of basketball impact.

23) The light strip on the lower edge of the basketball hoop to reduce the probability of basketball impact.

24) The light strip on the lower edge of the basketball hoop to reduce the probability of basketball impact.

25) The light strip on the lower edge of the basketball hoop to reduce the probability of basketball impact.

26) The light strip on the lower edge of the basketball hoop to reduce the probability of basketball impact.

27) The light strip on the lower edge of the basketball hoop to reduce the probability of basketball impact.

28) The light strip on the lower edge of the basketball hoop to reduce the probability of basketball impact.

29) The light strip on the lower edge of the basketball hoop to reduce the probability of basketball impact.

30) The light strip on the lower edge of the basketball hoop to reduce the probability of basketball impact.

31) The light strip on the lower edge of the basketball hoop to reduce the probability of basketball impact.

32) The light strip on the lower edge of the basketball hoop to reduce the probability of basketball impact.

33) The light strip on the lower edge of the basketball hoop to reduce the probability of basketball impact.

34) The light strip on the lower edge of the basketball hoop to reduce the probability of basketball impact.

35) The light strip on the lower edge of the basketball hoop to reduce the probability of basketball impact.

36) The light strip on the lower edge of the basketball hoop to reduce the probability of basketball impact.

37) The light strip on the lower edge of the basketball hoop to reduce the probability of basketball impact.

38) The light strip on the lower edge of the basketball hoop to reduce the probability of basketball impact.

39) The light strip on the lower edge of the basketball hoop to reduce the probability of basketball impact.

40) The light strip on the lower edge of the basketball hoop to reduce the probability of basketball impact.

41) The light strip on the lower edge of the basketball hoop to reduce the probability of basketball impact.

42) The light strip on the lower edge of the basketball hoop to reduce the probability of basketball impact.

43) The light strip on the lower edge of the basketball hoop to reduce the probability of basketball impact.

44) The light strip on the lower edge of the basketball hoop to reduce the probability of basketball impact.

45) The light strip on the lower edge of the basketball hoop to reduce the probability of basketball impact.

46) The light strip on the lower edge of the basketball hoop to reduce the probability of basketball impact.

47) The light strip on the lower edge of the basketball hoop to reduce the probability of basketball impact.

48) The light strip on the lower edge of the basketball hoop to reduce the probability of basketball impact.

49) The light strip on the lower edge of the basketball hoop to reduce the probability of basketball impact.

50) The light strip on the lower edge of the basketball hoop to reduce the probability of basketball impact.

51) The light strip on the lower edge of the basketball hoop to reduce the probability of basketball impact.

52) The light strip on the lower edge of the basketball hoop to reduce the probability of basketball impact.

53) The light strip on the lower edge of the basketball hoop to reduce the probability of basketball impact.

54) The light strip on the lower edge of the basketball hoop to reduce the probability of basketball impact.

55) The light strip on the lower edge of the basketball hoop to reduce the probability of basketball impact.

56) The light strip on the lower edge of the basketball hoop to reduce the probability of basketball impact.

57) The light strip on the lower edge of the basketball hoop to reduce the probability of basketball impact.

58) The light strip on the lower edge of the basketball hoop to reduce the probability of basketball impact.

59) The light strip on the lower edge of the basketball hoop to reduce the probability of basketball impact.

60) The light strip on the lower edge of the basketball hoop to reduce the probability of basketball impact.

61) The light strip on the lower edge of the basketball hoop to reduce the probability of basketball impact.

62) The light strip on the lower edge of the basketball hoop to reduce the probability of basketball impact.

63) The light strip on the lower edge of the basketball hoop to reduce the probability of basketball impact.

64) The light strip on the lower edge of the basketball hoop to reduce the probability of basketball impact.

65) The light strip on the lower edge of the basketball hoop to reduce the probability of basketball impact.

66) The light strip on the lower edge of the basketball hoop to reduce the probability of basketball impact.

67) The light strip on the lower edge of the basketball hoop to reduce the probability of basketball impact.

68) The light strip on the lower edge of the basketball hoop to reduce the probability of basketball impact.

69) The light strip on the lower edge of the basketball hoop to reduce the probability of basketball impact.

70) The light strip on the lower edge of the basketball hoop to reduce the probability of basketball impact.

71) The light strip on the lower edge of the basketball hoop to reduce the probability of basketball impact.

72) The light strip on the lower edge of the basketball hoop to reduce the probability of basketball impact.

73) The light strip on the lower edge of the basketball hoop to reduce the probability of basketball impact.

74) The light strip on the lower edge of the basketball hoop to reduce the probability of basketball impact.

75) The light strip on the lower edge of the basketball hoop to reduce the probability of basketball impact.

76) The light strip on the lower edge of the basketball hoop to reduce the probability of basketball impact.

77) The light strip on the lower edge of the basketball hoop to reduce the probability of basketball impact.

78) The light strip on the lower edge of the basketball hoop to reduce the probability of basketball impact.

79) The light strip on the lower edge of the basketball hoop to reduce the probability of basketball impact.

80) The light strip on the lower edge of the basketball hoop to reduce the probability of basketball impact.

81) The light strip on the lower edge of the basketball hoop to reduce the probability of basketball impact.

82) The light strip on the lower edge of the basketball hoop to reduce the probability of basketball impact.

83) The light strip on the lower edge of the basketball hoop to reduce the probability of basketball impact.

84) The light strip on the lower edge of the basketball hoop to reduce the probability of basketball impact.

85) The light strip on the lower edge of the basketball hoop to reduce the probability of basketball impact.

86) The light strip on the lower edge of the basketball hoop to reduce the probability of basketball impact.

87) The light strip on the lower edge of the basketball hoop to reduce the probability of basketball impact.

88) The light strip on the lower edge of the basketball hoop to reduce the probability of basketball impact.

89) The light strip on the lower edge of the basketball hoop to reduce the probability of basketball impact.

90) The light strip on the lower edge of the basketball hoop to reduce the probability of basketball impact.

91) The light strip on the lower edge of the basketball hoop to reduce the probability of basketball impact.

92) The light strip on the lower edge of the basketball hoop to reduce the probability of basketball impact.

93) The light strip on the lower edge of the basketball hoop to reduce the probability of basketball impact.

94) The light strip on the lower edge of the basketball hoop to reduce the probability of basketball impact.

95) The light strip on the lower edge of the basketball hoop to reduce the probability of basketball impact.

96) The light strip on the lower edge of the basketball hoop to reduce the probability of basketball impact.

97) The light strip on the lower edge of the basketball hoop to reduce the probability of basketball impact.

98) The light strip on the lower edge of the basketball hoop to reduce the probability of basketball impact.

99) The light strip on the lower edge of the basketball hoop to reduce the probability of basketball impact.

100) The light strip on the lower edge of the basketball hoop to reduce the probability of basketball impact.

101) The light strip on the lower edge of the basketball hoop to reduce the probability of basketball impact.

102) The light strip on the lower edge of the basketball hoop to reduce the probability of basketball impact.

103) The light strip on the lower edge of the basketball hoop to reduce the probability of basketball impact.

104) The light strip on the lower edge of the basketball hoop to reduce the probability of basketball impact.

105) The light strip on the lower edge of the basketball hoop to reduce the probability of basketball impact.

106) The light strip on the lower edge of the basketball hoop to reduce the probability of basketball impact.

107) The light strip on the lower edge of the basketball hoop to reduce the probability of basketball impact.

108) The light strip on the lower edge of the basketball hoop to reduce the probability of basketball impact.

109) The light strip on the lower edge of the basketball hoop to reduce the probability of basketball impact.

110) The light strip on the lower edge of the basketball hoop to reduce the probability of basketball impact.

111) The light strip on the lower edge of the basketball hoop to reduce the probability of basketball impact.

112) The light strip on the lower edge of the basketball hoop to reduce the probability of basketball impact.

113) The light strip on the lower edge of the basketball hoop to reduce the probability of basketball impact.

114) The light strip on the lower edge of the basketball hoop to reduce the probability of basketball impact.

115) The light strip on the lower edge of the basketball hoop to reduce the probability of basketball impact.

116) The light strip on the lower edge of the basketball hoop to reduce the probability of basketball impact.

117) The light strip on the lower edge of the basketball hoop to reduce the probability of basketball impact.

118) The light strip on the lower edge of the basketball hoop to reduce the probability of basketball impact.

119) The light strip on the lower edge of the basketball hoop to reduce the probability of basketball impact.

120) The light strip on the lower edge of the basketball hoop to reduce the probability of basketball impact.

121) The light strip on the lower edge of the basketball hoop to reduce the probability of basketball impact.

122) The light strip on the lower edge of the basketball hoop to reduce the probability of basketball impact.

123) The light strip on the lower edge of the basketball hoop to reduce the probability of basketball impact.

124) The light strip on the lower edge of the basketball hoop to reduce the probability of basketball impact.

125) The light strip on the lower edge of the basketball hoop to reduce the probability of basketball impact.

126) The light strip on the lower edge of the basketball hoop to reduce the probability of basketball impact.

127) The light strip on the lower edge of the basketball hoop to reduce the probability of basketball impact.

128) The light strip on the lower edge of the basketball hoop to reduce the probability of basketball impact.

129) The light strip on the lower edge of the basketball hoop to reduce the probability of basketball impact.

130) The light strip on the lower edge of the basketball hoop to reduce the probability of basketball impact.

131) The light strip on the lower edge of the basketball hoop to reduce the probability of basketball impact.

132) The light strip on the lower edge of the basketball hoop to reduce the probability of basketball impact.

133) The light strip on the lower edge of the basketball hoop to reduce the probability of basketball impact.

134) The light strip on the lower edge of the basketball hoop to reduce the probability of basketball impact.

135) The light strip on the lower edge of the basketball hoop to reduce the probability of basketball impact.

136) The light strip on the lower edge of the basketball hoop to reduce the probability of basketball impact.

137) The light strip on the lower edge of the basketball hoop to reduce the probability of basketball impact.

138) The light strip on the lower edge of the basketball hoop to reduce the probability of basketball impact.

139) The light strip on the lower edge of the basketball hoop to reduce the probability of basketball impact.

140) The light strip on the lower edge of the basketball hoop to reduce the probability of basketball impact.

141) The light strip on the lower edge of the basketball hoop to reduce the probability of basketball impact.

142) The light strip on the lower edge of the basketball hoop to reduce the probability of basketball impact.

143) The light strip on the lower edge of the basketball hoop to reduce the probability of basketball impact.

144) The light strip on the lower edge of the basketball hoop to reduce the probability of basketball impact.

145) The light strip on the lower edge of the basketball hoop to reduce the probability of basketball impact.

146) The