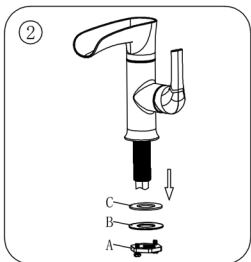
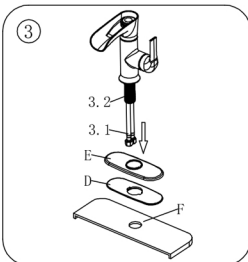


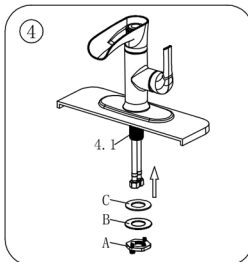
1. Close the water supply valve under the sink or the water in the main water supply area, disconnect the water supply pipe, and remove the old faucet.



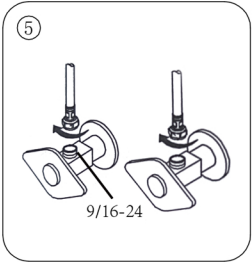
2. Remove the tap and remove the mounting nut (A), metal gasket (B), and rubber gasket (C).



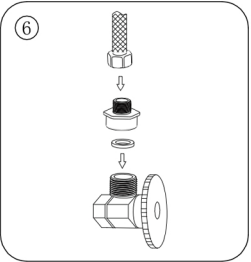
3. Place the bottom plate (D) and panel (E) on the mounting hole of the sink (F), and align the center hole of the bottom plate (D) and panel (E) with the center mounting hole of the sink (F). Pass the water inlet hose (3.1) and the tooth tube (3.2) on the main body of the faucet through the holes in the panel (E), floor (D), and sink (F) until the faucet is placed on the top of the panel (E).



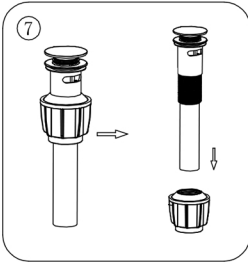
4. From below the sink, slide the rubber gasket (C) and metal gasket (B) onto the tooth tube (4.1) of the body of the faucet, then screw the mounting nut (A) onto the tooth tube (4.1), tighten the mounting nut (A) until the faucet is firmly fixed to the sink.



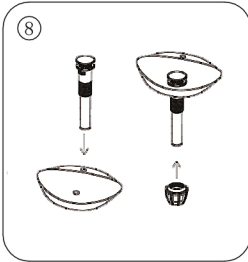
5. Connect the nuts of the hot and cold inlet water hoses to the hot and cold closing valves respectively, and tighten them with a wrench, not too tight. If your water valve is 1 / 2 teeth " please refer to Step 6.



6. Check whether the rubber washer has existed at the end of the rotary joint nut and connect it to the water valve thread connector with a wrench. Connect the nuts of the hot and cold inlet hoses to the rotor on the hot and cold closing valve respectively, and tighten with a wrench, not too tight.

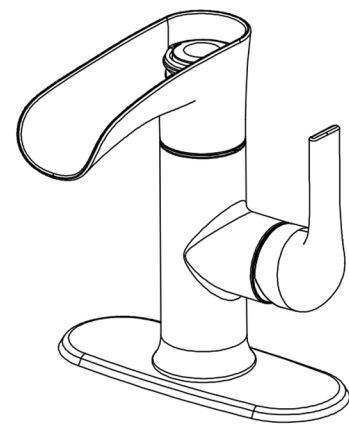


7. Install the push pop-up drain assembly: Turn the big nut clockwise to separate it from the drain body.

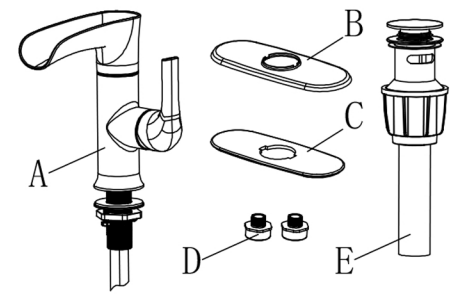


8. Apply a thin bead of putty/silicone onto the flange. Insert the drain body into the sink, slide the nut up and thread it counter clockwise on the drain body underneath the sink until it is firmly attached to the bottom of the flange. Do not overtighten the nut.

Filter Lavatory Faucet

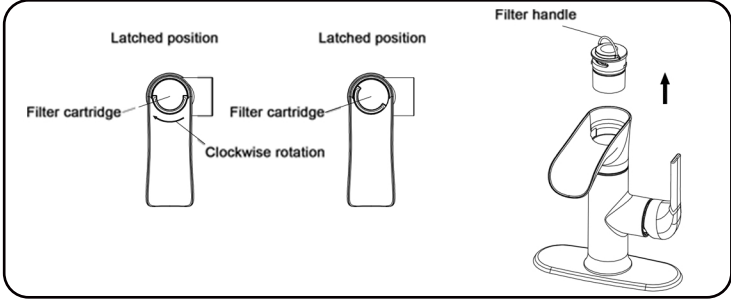


Part List



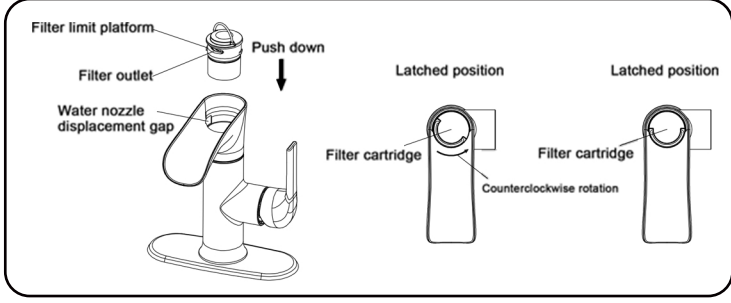
Number	Name	Quantity
A	Faucet	1
B	Panel	1
C	Baseplate	1
D	Connector	2
E	Drainer	1

Filter replacement instructions



1. Remove the filter element

Hold the filter element handle, turn the filter element clockwise from the locked position to the unlock position, and lift the filter element upward.



2. Install filter element

Turn the water outlet of the filter element to the left front, point the limit convex table of the filter element at the water nozzle gap, and press down to the end. At this time, it is in the unlock position, hold the filter element handle, and turn counterclockwise to the locked position.