



Model: WDP-F13

The WDP-F13 is a compatible replacement for the following water filters:

GE® filters

MWF, GWF, GWFA, GWF01, GWF06, MWFA, WR02X11020, WR02X11287, WR02X11290, WR2M3552, WR97X10006

Hotpoint® filters

HWFA, HWF, MWF, MWFA

Sears® / Kenmore® filters

9991, 469991, 46-9991, 9996, 469996, 46-9996

* Claims of compatibility verified by manufactures internal testing.

Filter life: up to 6 months or 300 gallons (whichever comes first)



Tested and Certified by NSF International against **NSF/ANSI Standards 42, 53 and 401** in model EFF-6013S for the reduction of the claims specified on the Performance Data Sheet, and to **NSF/ANSI 372 (≤0.25% lead)**.

Installation instructions

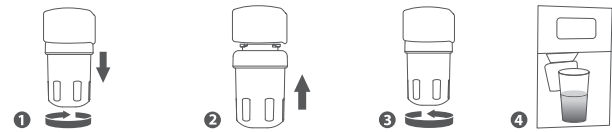
Before installation:

- Shut off the cold-water supply to the refrigerator before installation. Turn on the refrigerator water dispenser to release water pressure, letting water drain from the pipe completely.
- It is normal for black carbon fines (particles) to appear on the outside of your filter. This happens when the filter is jarred in shipping. It is safe to simply wipe it off.
- The filter connectors are larger to prevent leaks. You might have to twist the filter hard to make sure the connection is secure.

1. Locate existing filter and remove it by turning it counter-clockwise as shown in the graphic.
2. Install new filter into refrigerator.
3. Twist the filter clockwise until it stops.This is required to activate the internal valve inside the refrigerator.

If the valve is not fully activated, the water flow will be slower than normal.

4. Check the water flow by filling a glass from the refrigerator water dispenser. If the water flow is slow or there is "chattering", remove and reinstall the filter making sure it is seated securely. Check again. Run water from the dispenser for 5 minutes at 0.5gpm (about 2.5 gallons) to clear the system and prevent sputtering.



Resetting your filter indicator:

Note: These are the most common filter reset instructions. If the instructions don't work for your refrigerator brand, see the documentation that came with your refrigerator.

Refrigerator brand	Instructions
GE® systems	Press and hold the reset water filter button on the dispenser for 3 seconds.
Kenmore® systems	The filter reset for Kenmore refrigerators varies by model. See the documentation that came with your refrigerator.

Storage and maintenance:

- Replace your filter every 6 months or 300 gallons to prevent bacteria and fungus growth in your filter, supply lines, and storage tank.
- Keep your unused filters in a cool, dark, and dry place until you need them.
- If you do not use your water dispenser for more than four days, run two gallons of water before using it to prevent bad tasting water.

Frequently asked questions:

Q: Why is it difficult to twist the new filter into the filter housing?

A: The connector may expand because of water pressure. Therefore, it is recommended you push the new filter in with a little bit of force, but not too hard. Then turn it clockwise.

Q: Do I need to flush the filter after installation?

A: After installation, it is highly recommended you run water for a few minutes before using. Water filters are made from advanced coconut carbon block, so there are some carbon fines in the filter. Flushing removes the carbon fines to produce clean water.

Q: Must the filter be changed every 6 months?

A: Yes, you must replace the filter every six months or sooner if water flow is reduced or if there is heavy sediment / rust present. Over-used filters will degrade the filtration performance.

⚠ Warning:

To reduce the risk of property damage due to water leakage, this filter MUST be installed in accordance with the manufacturer's specifications and instructions. This filter unit must be replaced every 300 gallons or 6 months. Failure to follow instructions and operating specifications will void your warranty. Further, manufacturer assumes no responsibility or liability for damages arising out of misuse of the product. GE® is a registered trademark of General Electric Corp.

GE® is used for reference purposes only.

Kenmore® is a registered trademark of KCD IP, LLC.

Kenmore® is used for reference purposes only.

*The service life mentioned above is subject to chlorine reduction. Actual result varies according to the local water quality.

Manufacturer Technical Support

Tel: 1-888-352-3558 (U.S.)

E-mail: service@waterdropfilter.com



Performance data sheet

System Model No.: **EFF-6013S**

Replacement Filter Cartridge Model No.: **WDP-F13**

Operating specifications:

Operating Temperature: 33 -100°F/0.6 - 38°C

Working Pressure: 20 -100 psi/140 - 689 kPa

Rated Capacity: 300 gallons/1,137 litres

Flow Rate: 0.5 gpm/1.9 lpm

Substance reduction:

The system has been tested and certified by the NSF International according to NSF/ANSI Standards 42, 53 and 401 for the reduction of the substances listed below. The concentration of the indicated substances in water entering the system was reduced to a concentration less than or equal to the permissible limit for the water leaving the system, as specified by NSF/ANSI Standards 42, 53 and 401. While testing was performed under standard laboratory conditions, actual performance may vary.

Substance	Inf. Average	NSF Specified Challenge Concentration	Ave. % Reduction(%)	Average Product Water Concentration	Max Permissible Product Water Concentration	NSF Reduction Requirements	NSF Test Report
Chlorine Taste and Odor	2.1 mg/L	2.0mg/L±10%	97.0%	0.063mg/L	N/A	≥50%	J-00295502
Benzene	15 ug/L	15 ug/L±10%	96.6%	0.5 ug/L	0.5 ug/L	N/A	J-00268283
Carbofuran	73 ug/L	73 ug/L±10%	98.4%	2 ug/L	40 ug/L	N/A	J-00268284
Lead(pH 8.5)	140 ug/L	140 ug/L±10%	99.6%	0.5 ug/L	10 ug/L	N/A	J-00268279
Lead(pH 6.5)	140 ug/L	140 ug/L±10%	99.6%	0.5 ug/L	10 ug/L	N/A	J-00268280
Cyst	120,000 oocysts/L	minimum 50,000 oocysts/L	>99.99%	1 oocysts/L	N/A	≥99.95%	J-00263594
Endrin	6 ug/L	6 ug/L±10%	93.6%	0.3 ug/L	2 ug/L	N/A	J-00296278
Mercury (pH 8.5)	6 ug/L	6 ug/L±10%	92.3%	0.5 ug/L	2 ug/L	N/A	J-00326152
Mercury (pH 6.5)	6 ug/L	6 ug/L±10%	93.8%	0.3 ug/L	2 ug/L	N/A	J-00268282
Phenyoin	0.21 ug/L	0.2 ug/L±20%	95.2%	10 ng/L	30 ng/L	N/A	J-00268287
Ibuprofen	0.42 ug/L	0.42 ug/L±20%	94.4%	22 ng/L	60 ng/L	N/A	J-00268287
Naproxen	0.13 ug/L	0.14 ug/L±20%	96.2%	5 ng/L	20 ng/L	N/A	J-00268287
Estrone	0.15 ug/L	0.14 ug/L±20%	96.6%	5 ng/L	20 ng/L	N/A	J-00268287
Bisphenol A	2.5 ug/L	2 ug/L±20%	99.2%	20 ng/L	300 ng/L	N/A	J-00268287
Nonyl phenol	1.8 ug/L	1.4 ug/L±20%	97.2%	50 ng/L	200 ng/L	N/A	J-00268287

⚠ Do not use with water that is microbiologically unsafe or of unknown water quality without adequate disinfection before or after the system. Systems certified for cyst reduction may be used with disinfected water that may contain filterable cysts.