



Instruction Manual

Item# FM102BL



Having Trouble?

Chat with us on your phone

Simply point your phone camera towards the QR code or see our website



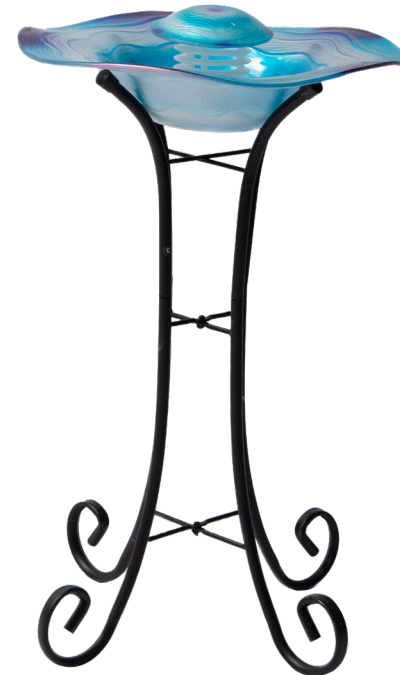
xbrand.us

or email at

customerservice@ecintel.com

Monday - Friday 7:00AM - 3:30PM PST

Floor Aromatherapy Mist Fountain/Aroma Diffuser



Have Questions or Issues? Need help with assembly?

Contact us and we will resolve immediately.

Simply point your phone camera towards the QR code or see our website

Support Hours M-F 7:00AM - 3:30PM (U.S Pacific Time)



Chat with us:
xbrand.us



Email:
customerservice@ecintel.com



Call:
951-319-4433

Purchased your product online?

We would really appreciate it if you can share your experience with others by reviewing our product on the website from which you purchased.



Warranty

Limited 1-Year Manufacturer Warranty on xbrand.us

Manufacturer warranty covers:

- Parts that are deemed defective within 30 days will be shipped free of charge.
- Any warranty claim after 30 days, will require shipping to be paid by the customer.

Any visible damage due to the neglect, misuse, or abuse will void the limited warranty of the product.

For further information, please contact us:

Chat with us: xbrand.us



Simply point your phone camera towards the QR code or see our website

Email: customerservice@ecintel.com

Purchased your product online?

We would really appreciate it if you can share your experience with others by reviewing our product on the website from which you purchased.



YouTube video instruction

Please use your smart phone camera to scan the QR code. Simply point your camera and let the camera scan the code below, and click on the link that opens up.

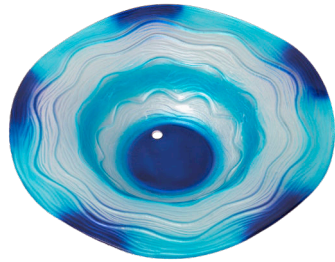


<https://xbrand.us/product/fm102bl/>

Contents

Contents	2
What is included	3
Assembly instructions	4
YouTube video instruction	5
Warranty	6

What is included



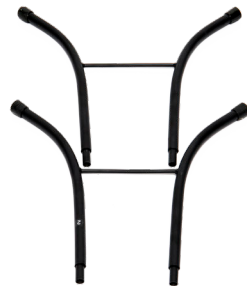
A. Main Bowl



B. Splash Guard



C. Lower Stand



D. Upper stand

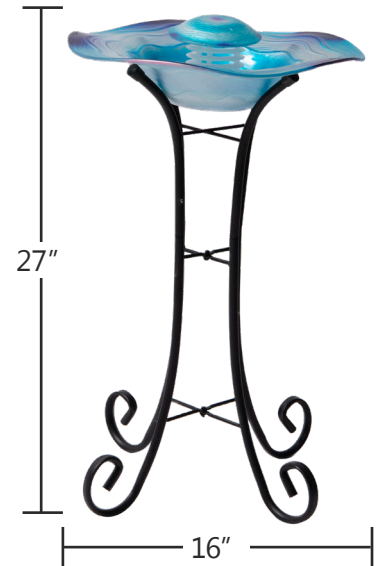
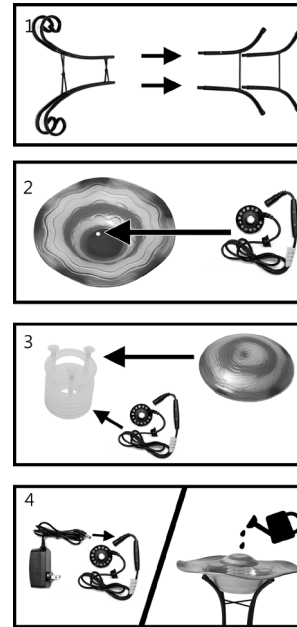


E. Plastic Tower Stand



F. MM116ABK Fogger unit

Assembly instructions



Step 1: Assemble the upper and lower stand.

Step 2: Place the main bowl on the stand and place the fogger unit cord through the hole.

Step 3: Put plastic stand over the fogger unit and place the splash guard on top.

Step 4: Connect the AC power adapter and fill with water.



Scan the QR code for detailed instructions

<https://xbrand.us/product/fm102bl/>