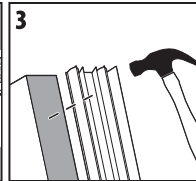
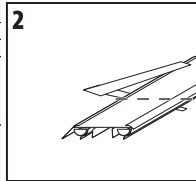
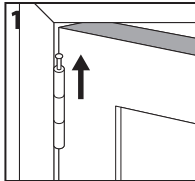


## INSTALLATION:

1. Remove door from hinges by removing hinge pins. Remove damaged door bottom and clean surface.
2. Measure width of door and cut door bottom to length with scissors.
3. Install door bottom with drip fin to the outside. Attach to bottom of door with screws or nails between the vinyl flaps. Replace door onto hinges. Insert hinge pins.



QUESTIONS? | PREGUNTAS?  
800.654.8454  
MDBUILDINGPRODUCTS.COM

