

1.0 Reference and Address			
Report Number	220200863SHA-001	Original Issued: 30-May-2022	Revised: None
Standard(s)	Electric Fans [UL 507:2017 Ed.10+R:27May2020]		
	Fans And Ventilators [CSA C22.2#113:2018 Ed.11]		
Applicant	Beijing 352 Environmental Technology Co., Ltd	Manufacturer	Sichuan AI-Chance Technology Co., Ltd
Address	Room 418, Jinjiye Building, No.5 Building, No.2 Shenggu Zhonglu, Chaoyang District, Beijing, PRC. 100029	Address	Ma'an Avenue, Anzhou Industrial Park, Anzhou District, MIANYANG CITY, SI CHUAN, 622650
Country	China	Country	China
Contact	Yang Ma/Novia	Contact	Wenhuan Pu
Phone	15820871607	Phone	18583505853
FAX	-	FAX	-
Email	mayang@352group.com.cn	Email	wenhuan.pu@changhong.com

2.0 Product Description	
Product	AIR PURIFIER
Brand name	LIFUBIDE, FULBIEDE
Description	The product covered by this report is air purifier intended for household use only. It cleans the air by means of filter. Provided with a 2-wire polarized attachment plug and intended to be connected to 120V power supply.
Models	Y1000, F1000
Model Similarity	The model Y1000 is identical with F1000, except for the model name.
Ratings	120V, 60Hz, 105W
Other Ratings	N/A

3.0 Product Photographs

Photo 1 - General view

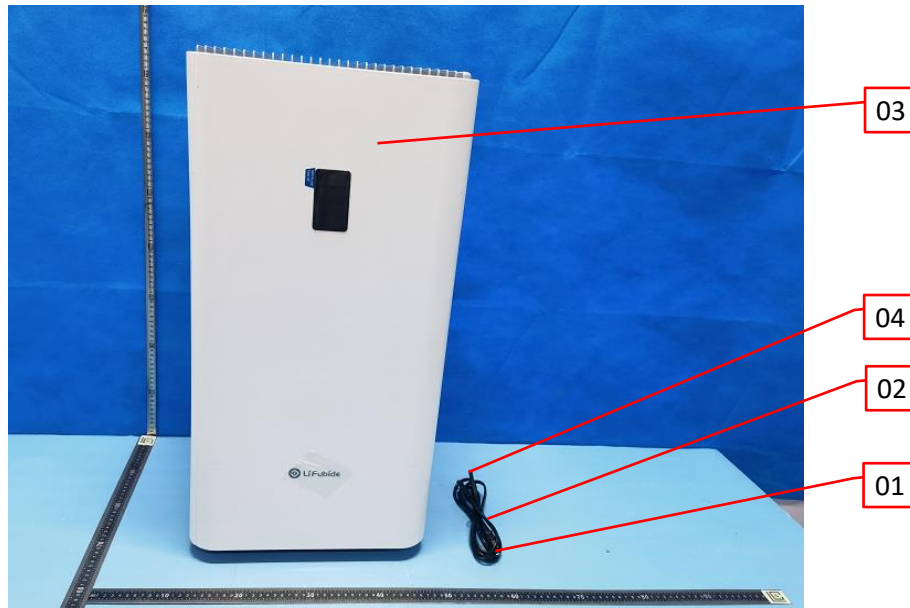


Photo 2 -Rear view



3.0 Product Photographs

Photo 3 - Side view



Photo 4 - Top view

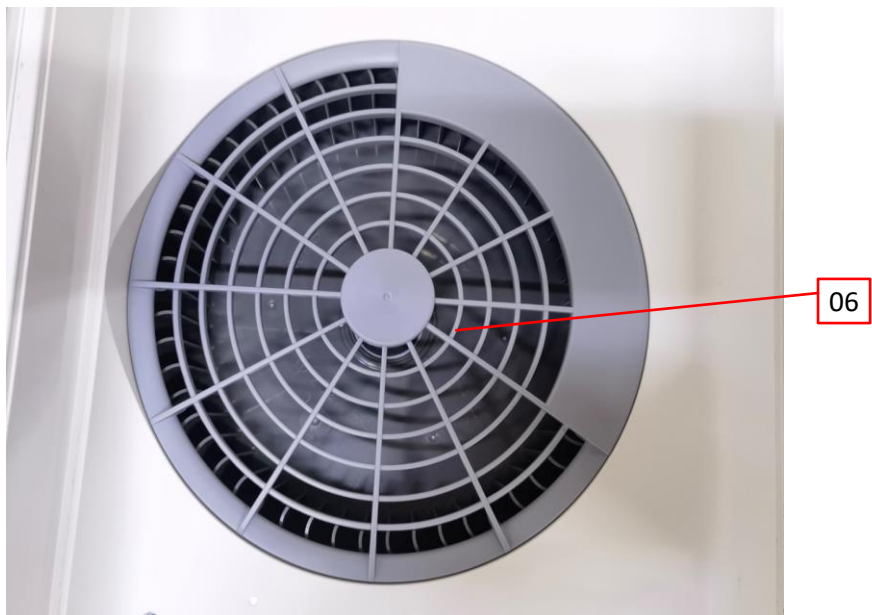


3.0 Product Photographs

Photo 5 - Bottom view



Photo 6 - Assemble view



3.0 Product Photographs

Photo 7 - Appliance inlet

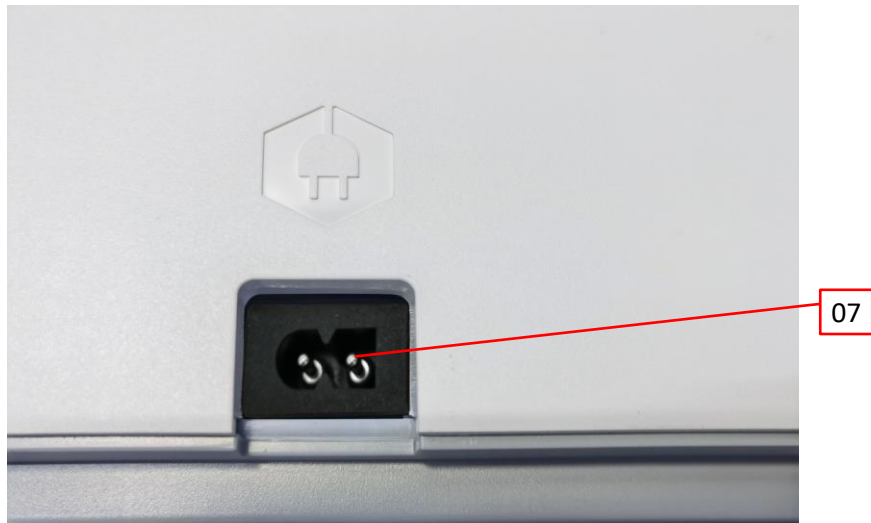
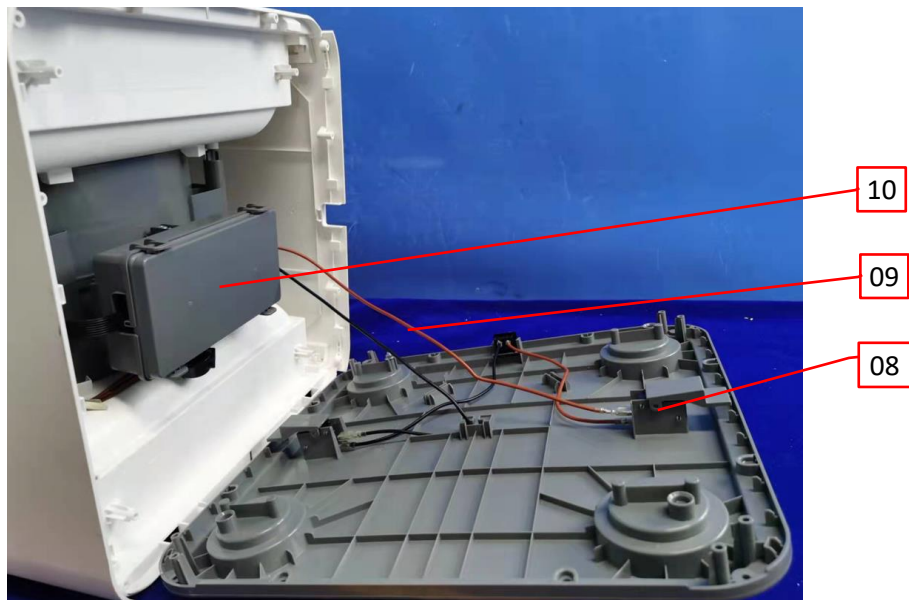


Photo 8 - Assemble view



3.0 Product Photographs

Photo 9 - Main PCB view

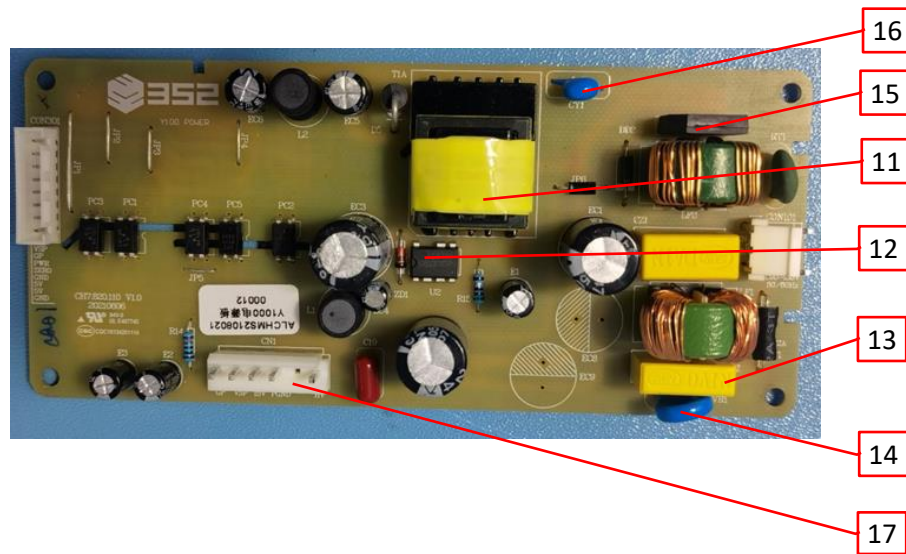
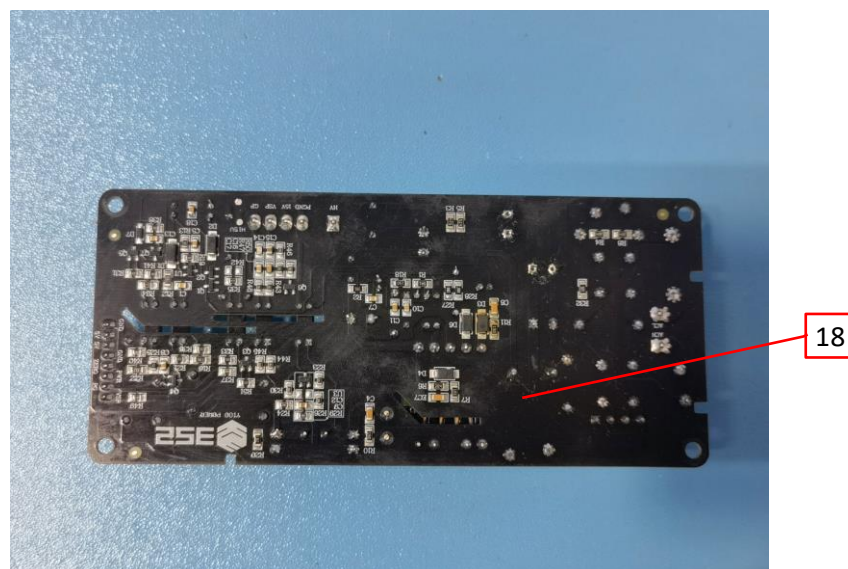


Photo 10 - PCB rear view



3.0 Product Photographs

Photo 11 - Internal view

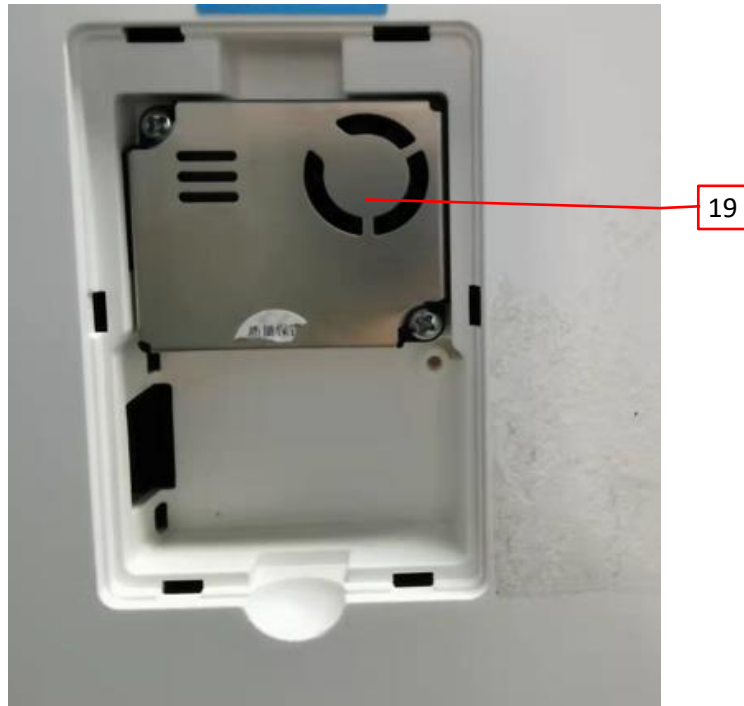
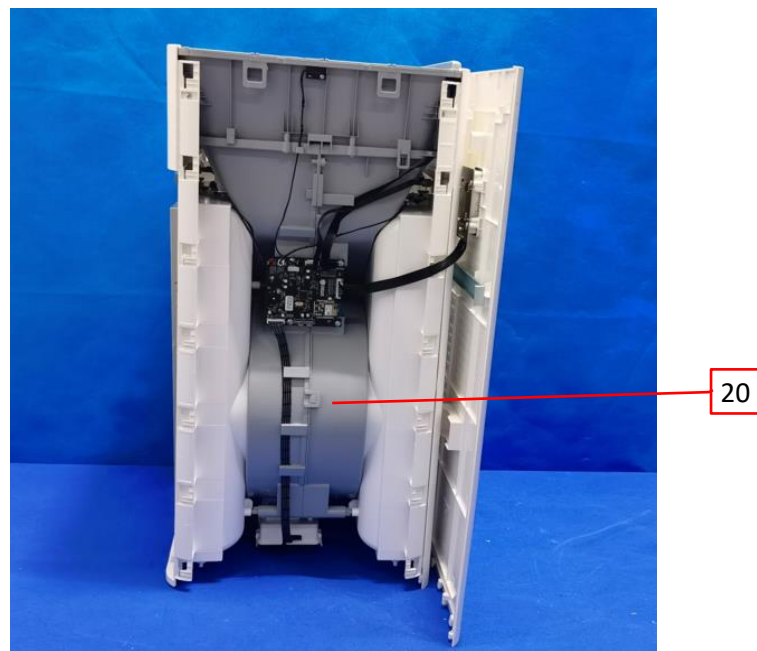


Photo 12 - Assemble view



3.0 Product Photographs

Photo 13 - Control board view

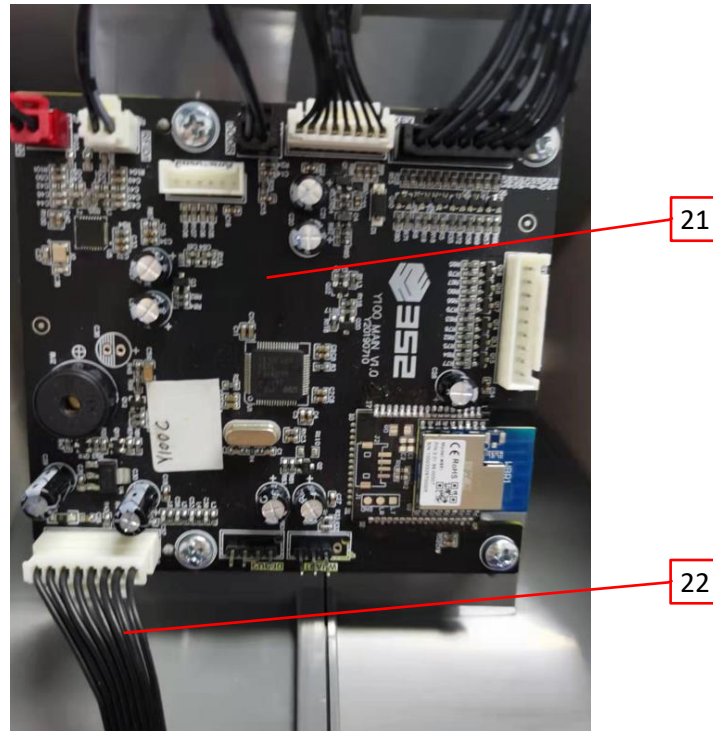


Photo 14 - Front view of PWB



3.0 Product Photographs

Photo 15 - Display view



Photo 16 - RFID board view



23

3.0 Product Photographs

Photo 17 - Internal view

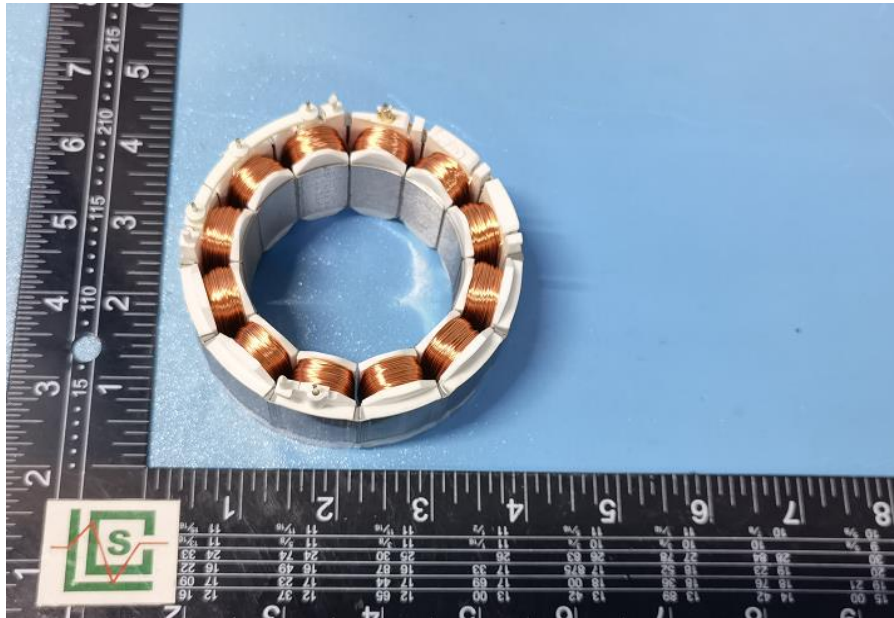


Photo 18 - Fan motor view



3.0 Product Photographs

Photo 19 - Fan motor internal view



4.0 Critical Components						
Photo #	Item no. ¹	Name	Manufacturer/ trademark ²	Type / model ²	Technical data and securement means	Mark(s) of conformity ³
1	1	Power Plug	PHINO ELECTRIC CO LTD (E94216)	PHP-201	7A, 125V	cURus
1	2	Power Cord	PHINO ELECTRIC CO LTD (E209524)	NISPT-2	105°C, 18AWG, VW-1, 300V	cURus
1	3	Enclosure plastic	CHENGDU KINGFA SCI.&TECH. ADVANCED MATERIARLSCO., LTD.(E171666)	ABS-660	ABS, UL94 HB, Min. thickness 1.6mm	cURus
1	4	Appliance connector	PHINO ELECTRIC CO LTD(E94216)	PHS-205A	7A, 125V	cURus
5	5	Base support	CHENGDU KINGFA SCI.&TECH. ADVANCED MATERIARLSCO., LTD.(E171666)	HIPS CM40	HIPS, UL94 HB, Min. thickness 1.5mm	cURus
6	6	Fan guard	CHENGDU KINGFA SCI.&TECH. ADVANCED MATERIARLSCO., LTD.(E171666)	ABS-660	ABS, UL94 HB, Min. thickness 1.6mm	cURus
7	7	AC Inlet	Dongguan Huaconn Electronics Co Ltd(E340249)	HC-88	7A, 125V	cURus
8	8	Interlock switch	ZHE JIANG BEI ER JIA ELECTRONIC CO LTD(E236875)	BEJ-E-EK-KW01-0043	16(4)A 250VAC T125 5E4	cURus

4.0 Critical Components						
Photo #	Item no. ¹	Name	Manufacturer/ trademark ²	Type / model ²	Technical data and securement means	Mark(s) of conformity ³
8	9	Internal wire near to interlock switch	MIANYANG GAOXIN KEGUANG HONGSHENG CABLE CO LTD(E315352)	1015	600V 105°C 18AWG	cURus
8	10	PCB box	KINGFA Technology Co., Ltd (E171666)	FW-620T	2.0mm UL94 5VA	cURus
9	11	Transformer	ZHONGSHAN CITY DONGFENG TOWN PUFU ELECTRONICS FACTORY	EF20	Input: 120V~, output: 12V, 1A	See 5.0
9	12	Optocoupler	EVERLIGHT ELECTRONICS CO LTD 6-8 ZHONGHUA RD SHULIN DISTRICT NEW TAIPEI,23860 TAIWAN (E214129)	EL817	5000VAC	cURus
9	13	X Capacitor	Dain Electronic Co., Ltd (E147776)	MPX	275Vac 0.1uF -40~+110°C	cURus
9	14	Varistor	SONGLONG LISHANG Electronics Technology Co.,Ltd.(E317616)	10D561K	10mm 560V	cURus
9	15	Fuse	XC ELECTRONICS (SHENZHEN) CORPLTD (E249609)	3T	3.6x10mm 2A 250Vac	cURus
9	16	Y capacitor	JYH HSU (JEC) ELECTRONICS LTD(E356696)	JD	1nF 400Vac	cURus
			JYH HSU (JEC) ELECTRONICS LTD(E356696)	JY	1nF 400Vac	cURus
9	17	Wire connector	YUEQING JIADE ELECTRONICS CO LTD(E241222)	VH-3A	3.96mm 250V,7A	cURus
			YUEQING JIADE ELECTRONICS CO LTD(E241222)	VH-8A	3.96mm 250V,7A	cURus
10	18	Main PCB	Various	Various	FR-4, 1.6mm 94V-0	cURus

4.0 Critical Components						
Photo #	Item no. ¹	Name	Manufacturer/ trademark ²	Type / model ²	Technical data and securement means	Mark(s) of conformity ³
11	19	Sensor	Cubic Sensor and Instrument Co.,Ltd	PM2008MS	0~1000µg/m ³ , ±10% or 10µg/m ³	NR
12	20	Enclosure plastic for fan motor	CHENGDU KINGFA SCI.&TECH. ADVANCED MATERIARLSCO.,LTD.(E171666)	HIPS CM40	HIPS	cURus
13	21	Control PCB	Shenzhen LongTeng Electric circuit Technology Co Ltd (E467745)	Various	FR-4, 1.0mm/1.6mm 94V-0	cURus
13	22	Internal wire	MIANYANG GAOXIN KEGUANG HONGSHENG CABLE CO LTD(E315352)	UL 2468	26AWG, 300V -20°C~+105°C	cURus
16	23	RFID board	JIANGXI XINGHAIRONG CIRCUIT BOARD CO LTD (E495648)	Various	FR-4 1.6mm 94V-0	cURus
17	24	Control panel board	Shenzhen LongTeng Electric circuit Technology Co Ltd (E467745)	Various	FR-4, 1.0mm/1.6mm 94V-0	cURus
18	25	Fan motor	Nidec Shibaura (Zhejiang) Co., Ltd.	SIC-58CS-B473-1	DC140V 8P 73W 820rpm	See 5.0
18	26	Marking label (not shown)	Various	Various	High temperature: 60°C, low temperature: -20°C	cURus
<p>NOTES:</p> <p>1) Not all item numbers are indicated (called out) in the photos, as their location is obvious.</p> <p>2) "Various" means any type, from any manufacturer that complies with the "Technical data and securement means" and meets the "Mark(s) of conformity" can be used.</p> <p>3) Indicates specific marks to be verified, which assures the agreed level of surveillance for the component. "NR" - indicates Unlisted and only visual examination is necessary. "See 5.0" indicates Unlisted components or assemblies to be evaluated periodically refer to section 5.0 for details.</p>						

5.0 Critical Unlisted CEC Components

INSULATED COIL

Photo #	Item no.	Name	Manufacturer/Trademark	Type / model
18	25	Fan motor	Nidec Shibaura (Zhejiang) Co., Ltd.	SIC-58CS-B473-1
Electrical Rating: DC140V 8P 73W 820rpm				Insulation class A
Component Standard used:		UL 1004-1:2012 Ed.2+R:05Nov2020 UL 1004-2:2014 Ed.2+R:28Feb2020 CSA C22.2#100:2014 Ed.7+U1; CSA C22.2#77:2014 Ed.8+E1		

MATERIALS LIST

Component	Manufacturer	Type/model	Dimensions/thickness/assembly information
Lead wire	TAICANG LIXIN ELECTRIC PLASTICS CO LTD	AWG3	300V 105°C, E215300
Bobbin	Various	Various	HB, 75°C
Enclosure	Various	Various	V-0, 130°C
Winding	Various	Various	155°C
PCB	PANASONIC CORPORATION	R-1781	V-0, 130°C, met UL 796. E81336

WINDING(S) RESISTANCE

Winding Designation	Wire Size (mm)	Wire Type	Turns	Volts	Amps	DC resistance (Ω) +/- 10%:
Any two terminals between U, V or W	φ0.42	1UEW-N	165	/	/	13

VERIFICATION PROCESS

Frequency: Annual	Test Site: CEC		Number of samples to test: 1
Test Name	Test Parameters		
Winding resistance	See resistance per winding above.		
Dielectric Strength	Apply voltage Between	Test Voltage	Test Time
	Primary to core	1000V	60s

5.0 Critical Unlisted CEC Components						
INSULATED COIL						
Photo #	Item no.	Name	Manufacturer/Trademark		Type / model	
9	11	Transformer	ZHONGSHAN CITY DONGFENG TOWN PUFU ELECTRONICS FACTORY		EF20	
Electrical Rating:			Input: 120V~, output: 12V, 1A			Insulation class A
Component Standard used:			Class 2 Power Units [UL 1310:2018 Ed.7+R:16Aug2019] Power Supplies With Extra-Low Voltage Class 2 Outputs [CSA C22.2#223:2015 Ed.3]			
MATERIALS LIST						
Component	Manufacturer	Type/model	Dimensions/thickness/assembly information			
Bobbin	CHANGCHUN PLASTIC CO., LTD	EF20	Phenolic 150°C, E502019			
Winding	DONG GUAN YIDA INDUSTRIAL CO LTD	QA-x/155	155°C, UL E344055			
Triple insulation wire	DONGGUAN HTLDE ELECTRONICS CO LTD	THW-B	130°C(Class B), E356133			
INSULATION TAPE	SHENZHEN XINHUAHUI ADHESIVE TECHNOLOGY CO LTD	HMT803	T130, UL E328315			
Tube	FLUO TECH INDUSTRIES CO LTD	TFT	300V, UL175982			
WINDING(S) RESISTANCE						
Winding Designation	Wire Size (mm)	Wire Type	Turns	Volts	Amps	DC resistance (Ω) +/- 10%:
N1	φ0.31	QA-x/155	120	/	/	0.9
N2	φ0.51	QA-x/155	9	/	/	0.04
N3	φ0.16*2	THW-B	30	/	/	2.5
N4	φ0.16*2	QA-x/155	28	/	/	2.3
VERIFICATION PROCESS						
Frequency: Annual		Test Site: CEC			Number of samples to test: 1	
Test Name	Test Parameters					
Winding resistance	See resistance per winding above.					
Dielectric Strength	Apply voltage Between			Test Voltage		Test Time
	Primary to core			1240V		60s
	Primary to secondary			1240V		60s
	Secondary to core			500V		60s

6.0 Critical Features

Recognized Component - A component part, which has been previously evaluated by an accredited certification body with restrictions and must be evaluated as part of the basic product considering the restrictions as specified by the Conditions of Acceptability.

Listed Component - A component part, which has been previously Listed or Certified by an accredited Certification Organization with no restrictions and is used in the intended application within its ratings.

Unlisted Component - A part that has not been previously evaluated to the appropriate designated component standard. It may also be a Listed or Recognized component that is being used outside of its evaluated Listing or component recognition.

Critical Features/Components - An essential part, material, subassembly, system, software, or accessory of a product that has a direct bearing on the product's conformance to applicable requirements of the product standard.

Construction Details - For specific construction details, reference should be made to the photographs and descriptions. All dimensions are approximate unless specified as exact or within a tolerance. In addition to the specific construction details described in this Report, the following general requirements also apply.

1. Spacing - In primary circuits, 2.4 mm minimum spacing are maintained through air and over surfaces of insulating material between current-carrying parts of opposite polarity and 2.4 mm minimum between such current-carrying parts and dead-metal parts or low voltage isolated circuits.
2. Mechanical Assembly - Components such as switches, fuseholders, connectors, wiring terminals and display lamps are mounted and prevented from shifting or rotating by the use of lockwashers, starwashers, or other mounting format that prevents turning of the component.
3. Corrosion Protection - N/A
4. Accessibility of Live Parts - All uninsulated live parts in primary circuitry are housed within a non-metallic enclosure constructed with no openings other than those specifically described in Sections 4 and 5.
5. Grounding - This product is not provided with a means of grounding as it is not required to be grounded since the product is a portable appliance rated 120V.
6. Polarized Connection - This product is provided with a polarized power supply connection. All single pole switches and fuses are connected only to the ungrounded supply circuit conductor.
7. Internal Wiring - Internal wiring is routed away from sharp or moving parts. Internal wiring leads terminating in soldered connections are made mechanically secure prior to soldering. Recognized Component separable (quick disconnect) connectors of the positive detent type, closed loop connectors, or other types specifically described in the text of this report are also acceptable as internal wiring terminals. At points where internal wiring passes through metal walls or partitions, the wiring insulation is protected against abrasion or damage by plastic bushings or grommets. All wiring is minimum 26 AWG, with a minimum rating of 300V, 105°C.
8. Schematics - Illustration No. 2
9. Markings - The product is marked on a labeling system as described in item No. 26 of Section 4.0 as follows: brand name, model number, date of manufacturer, electrical ratings.
10. Cautionary Markings - N/A
11. Installation, Operating and Safety Instructions - Instructions for installation and use of this product are provided by the manufacturer. Refer to Illustration No. 1 for details. Only representative pages are pasted.

7.0 Illustrations

Illustration 1 - Manual

Safety Instructions

READ AND SAVE THESE INSTRUCTIONS

Notice: The following content is related to safety; users must abide by the following instructions in order to properly use this product.

Warning: To reduce the risk of fire or electric shock, do not use this unit with any solid-state speed control device.

Please read the following carefully to avoid dangerous operating behavior.

Machine Placement

Before using the unit, it must be placed on a dry, flat and stable ground, with a space of at least 30 cm around the product.

Do not place it in direct sunlight.

Do not use the unit in humid or high temperature environments (such as bathrooms, toilets, and kitchens).

Do not immerse the unit in water.

To prevent interference, keep as far as possible between the unit and electrical appliances such as TV, radio, microwave oven, etc.

Power Related

The unit is limited to AC 110V~60Hz power only.

Do not use damaged or aged power cords.

If the power cord is damaged, please do not replace it yourself, please contact the customer service center.

Do not move the unit by pulling the power cord.

Do not touch the power plug with wet hands.

If there is dust or water stains on the power plug, wipe it with a dry towel.

Please unplug the power plug when not in use for a long time.

Use Related

Do not spray flammable substances near the unit.

Do not place objects on top of the product, and do not sit or stand on the unit.

Do not place water containers, medicines or flammable materials on the unit.

Do not spray water directly on the unit or use chemical cleaning agents such as alcohol or hydrochloric acid to clean the product. When the product has abnormal sound, burnt smell or smoke, please unplug the power plug immediately and contact the maintenance center in time.

Do not block the air inlet and outlet of this unit with any objects.

Do not put your fingers or other objects into the air inlet or outlet.

The LCD screen is made of glass, which is fragile, please do not squeeze it forcefully.

Please take good care of children and ensure that they do not play with this product to avoid accidents.

The mist of the ultrasonic humidifier may have a certain impact on the PM2.5 detections of this unit, and should be avoided as much as possible.

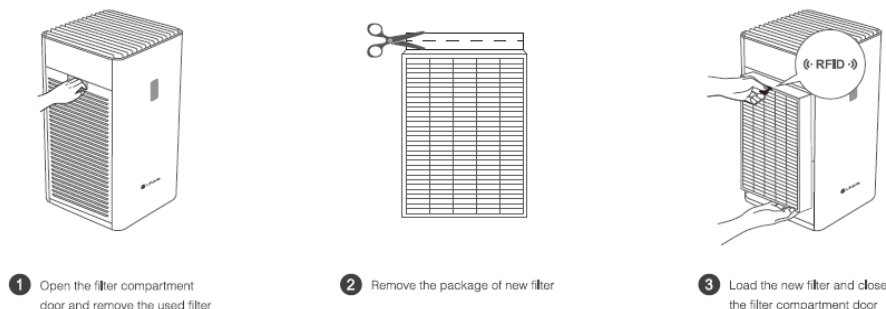
This unit cannot replace natural ventilation, nor can it replace other electrical appliances such as vacuum cleaners and range hoods.

Filter replacement

Filter life

Please remind to replace the filter according to the filter life reminder icon. When the filter life is between 5% and 15%, the corresponding icon displays yellow; when the filter life is less than 5%, the corresponding icon displays red. In order to ensure the effectiveness of the air purifier, please change the filter as soon as possible after the filter indicator icon turns yellow.

⚠ Before performing the following operations, please pull out the power plug



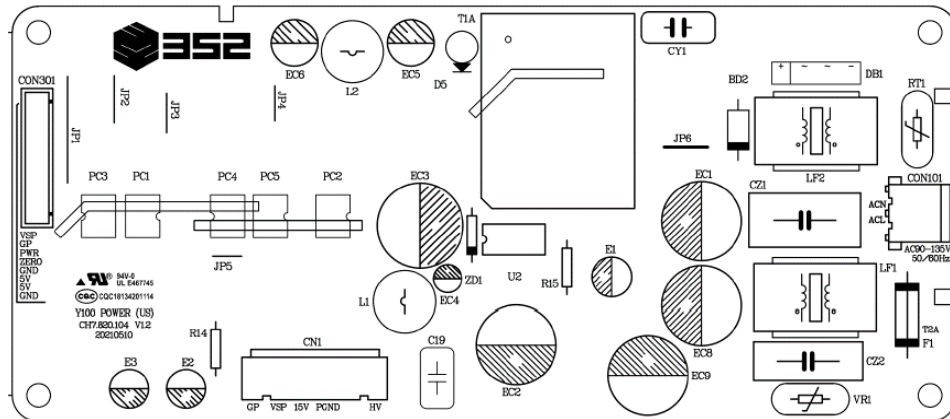
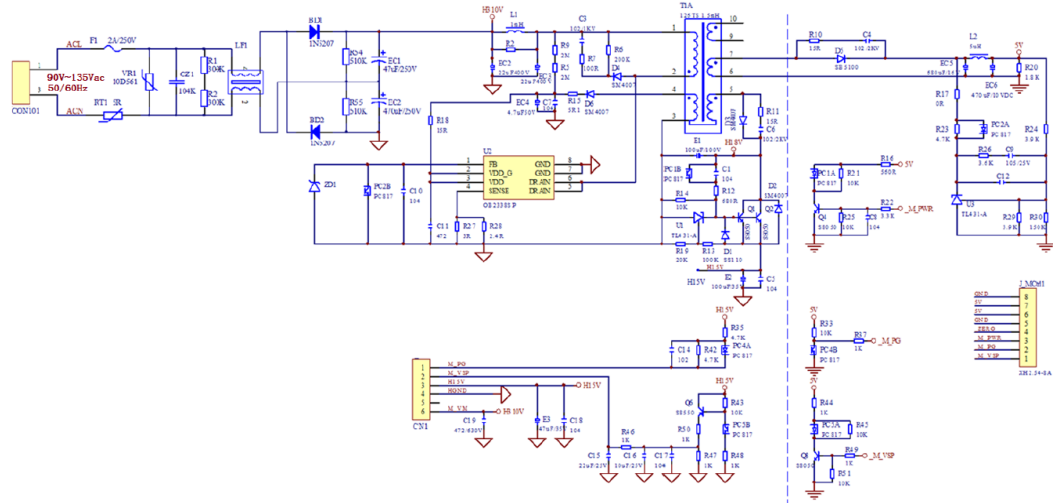
Important tips:

1 considering the complexity of various use environments, it is recommended that the air purifier be turned on continuously for 24 hours to avoid the odor caused by bacteria breeding in the filter due to long time shutdown.

2 If the machine has not been used for a long time, there may be some "smell" when it is opened for the first time, it is recommended to put the air purifier in a ventilated environment and run continuously to disperse the smell. If there is no relief, it is recommended to replace it.

7.0 Illustrations

Illustration 2 - Main PCB circuit



8.0 Test Summary			
Evaluation Period	2022-03-01 to 2022-05-30		Project No.
Sample Rec. Date	1-Mar-2022	Condition	Prototype
Sample ID.	0220301-19		
Test Location	Building No. 86, 1198 Qinzhou Road (North), Shanghai 200233, P. R. China		
Test Procedure	Testing Lab		
Determination of the result includes consideration of measurement uncertainty from the test equipment and methods. The product was tested as indicated below with results in conformance to the relevant test criteria.			
The following tests were performed:			
Test Description	UL 507:2017 Ed.10+R:27May2020 Clause	CSA C22.2#113:2018 Ed.11 Clause	
Leakage Current Test	41	6.8	
Input Test	45	6.3	
Temperature Test	46	6.4	
Dielectric Voltage Withstand Test	47	6.5	
Locked Rotor Test	50	/	
Humidity Conditioning Test	53	6.30	
Impact Test on Guards	61	6.22	
Static Force Test on Guards	62	6.23	
Component Breakdown Test	65	/	
Stability Test	72	6.14	
Abnormal temperature	/	6.11	
Impact test (enclosures)	/	6.25	
Test Description	Class 2 Power Units [UL 1310:2018 Ed.7+R:16Aug2019]/ Clause	Power Supplies With Extra-Low Voltage Class 2 Outputs [CSA C22.2#223:2015 Ed.3]/ Clause	
Maximum Output Voltage Test	28	6.3.1	
Maximum Input Test	29	6.3.2	
Output Current and Power Test	30	6.3.4	
Full-Load Ourput Current Test	32	6.3.3	
Dielectric Voltage-Withstand Test	34	6.5	
Abnormal Test	39	6.8	
Test Description	UL 1004-1:2012 Ed.2+R:05Nov2020 UL 1004-2:2014 Ed.2+R:28Feb2020 Clause	CSA C22.2#100:2014 Ed.7+U1; CSA C22.2#77:2014 Ed.8+E1 Clause	
Locked Rotor Temperature Test	8	6.4.5	
Locked Rotor Endurance Test	9	6.6.4	
Dielectric Voltage-Withstand Test	37	6.5	
8.1 Signatures			
A representative sample of the product covered by this report has been evaluated and found to comply with the applicable requirements of the standards indicated in Section 1.0.			
Completed by:	Kevin Zhang	Reviewed by:	Frederic Yang
Title:	Certification Engineer	Title:	Technical Supervisor
Signature:	<i>Kevin Zhang</i>	Signature:	

9.0 Correlation Page For Multiple Listings

The following products, which are identical to those identified in this report except for model number and Listee name, are authorized to bear the ETL label under provisions of the Intertek Multiple Listing Program.

BASIC LISTEE	Beijing 352 Environmental Technology Co., Ltd
Address	Room 418, Jinjiye Building, No.5 Building, No.2 Shenggu Zhonglu, Chaoyang District, Beijing, PRC. 100029
Country	China
Product	AIR PURIFIER

MULTIPLE LISTEE 1	None
Address	
Country	
Brand Name	
ASSOCIATED MANUFACTURER	
Address	
Country	
MULTIPLE LISTEE 1 MODELS	BASIC LISTEE MODELS

MULTIPLE LISTEE 2	None
Address	
Country	
Brand Name	
ASSOCIATED MANUFACTURER	
Address	
Country	
MULTIPLE LISTEE 2 MODELS	BASIC LISTEE MODELS

MULTIPLE LISTEE 3	None
Address	
Country	
Brand Name	
ASSOCIATED MANUFACTURER	
Address	
Country	
MULTIPLE LISTEE 3 MODELS	BASIC LISTEE MODELS

10.0 General Information

The Applicant and Manufacturer have agreed to produce, test and label ETL Listed products in accordance with the requirements of this Report. The Manufacturer has also agreed to notify Intertek and to request authorization prior to using alternate parts, components or materials.

COMPONENTS

Components used shall be those itemized in this Intertek report covering the product, including any amendments

LISTING MARK

The ETL Listing mark applied to the products shall either be separable in form, such as labels purchased from Intertek, or on a product nameplate or other media only as specifically authorized by Intertek. Use of the mark is subject to the control of Intertek.

The mark must include the following four items:

- 1) applicable country identifiers "US" and/or "C" or "US", "C" and "EU"
- 2) the word "Listed" or "Classified" or "Recognized Component" (whichever is appropriate)
- 3) a control number issued by Intertek
- 4) a product descriptor that identifies the standards used for certification. Example:

For US standards, the words, "Conforms to" shall appear with the standard number along with the word, "Standard" or "Std." Example: "Conforms to ANSI/UL Std. XX."

For Canadian standards, the words "Certified to CAN/CSA Standard CXX No. XX." shall be used, or abbreviated, "Cert. to CAN/CSA Std. CXX No. XX."

Can be used together when both standards are used.

If all standards on the ATM have the same standard title, the shared title or its abbreviation may be used in place of the examples above. Example: "Medical Electrical Equipment" or "MEE"; "Information Technology Equipment" or "ITE"; "Audio/Video Information And Communication Technology Equipment" or "A/V ICTE".

Note: A facsimile must be submitted to Intertek, Attn: Follow-up Services for approval prior to use.

The facsimile need not have a control number. A control number will be issued **after signed Certification Agreements** have been received by the Follow-up Services office, approval of the facsimile of your proposed Listing Mark, satisfactory completion of the Listing Report, and scheduling of a factory assessment in your facility.

MANUFACTURING AND PRODUCTION TESTS

Manufacturing and Production Tests shall be performed as required in this Report.

FOLLOW-UP SERVICE

Periodic unannounced audits of the manufacturing facility (and any locations authorized to apply the mark) shall be scheduled by Intertek. An audit report shall be issued after each visit. Special attention will be given to the following:

1. Conformance of the manufactured product to the descriptions in this Report.
2. Conformance of the use of the ETL mark with the requirements of this Report and the Certification Agreement.
3. Manufacturing changes.
4. Performance of specified Manufacturing and Production Tests.

In the event that the Intertek representative identifies non-conformance(s) to any provision of this Report, the Applicant shall take one or more of the following actions:

1. Correct the non-conformance.
2. Remove the ETL Mark from non-conforming product.
3. Contact the issuing product safety evaluation center for instructions.

10.1 Evaluation of Unlisted Components

Because Unlisted Components are uncontrolled, and they do not fall under a third party follow up program, Intertek may require these components to be tested and/or evaluated at least once annually, more often for certain components, as part of the independent certification process. The Unlisted Components in Section 5.0 require testing and/or evaluation as indicated.

The Applicant will be notified, in writing, via the applicable contact methods, as defined in Section 1.0, when these components must be selected and sent to Component Evaluation Center (CEC) for re-evaluation.

Due to particular testing requirements, some components may be requested to be shipped to specific labs. Thus, specific shipment destination(s) for each sample will be provided in the written notification.

Managing CEC Location:
Intertek Testing Services Shanghai Limited
ETL Component Evaluation Center
Building No. 86, 1198 Qinzhou Road (North)
Shanghai 200233, China
Attn: Ms. Emiliana Zhou

Sample Disposition: Due to the destructive nature of the testing, all samples will be discarded at the conclusion of testing unless, the manufacturer specifically requests the return of the samples. The request for return must accompany the initial component shipment.

11.0 Manufacturing and Production Tests

The manufacturer agrees to conduct the following Manufacturing and Production Tests as specified:

Required Tests

Dielectric Voltage Withstand Test

Polarization Test

11.1 Dielectric Voltage Withstand Test

Method

One hundred percent of production of the products covered by this Report shall be subjected to a routine production line dielectric withstand test.

The test shall be conducted on products, which are fully assembled. Prior to applying the test potential, all switches, contactors, relays, etc., should be closed so that all primary circuits are energized by the test potential. If all primary circuits cannot be tested at one time, then separate applications of the test potential shall be made.

The test voltage specified below shall be applied between primary circuits and accessible dead-metal parts. The test voltage may be gradually increased to the specified value but must be maintained at the specified value for one second or one minute as required.

Test Equipment

The test equipment shall incorporate a transformer with an essentially sinusoidal output, a means to indicate the applied test potential, and an audible and/or visual indicator of dielectric breakdown.

The test equipment shall incorporate a voltmeter in the output circuit to indicate directly the applied test potential if the rated output of the test equipment is less than 500VA.

If the rated output of the test equipment is 500VA or more, the applied test potential may be indicated by either:

- 1 - a voltmeter in the primary circuit;
- 2 - a selector switch marked to indicate the test potential; or
- 3 - a marking in a readily visible location to indicate the test potential for test equipment having a single test potential output.

In cases 2 and 3, the test equipment shall include a lamp or other visual means to indicate that the test potential is present at the test equipment output. All test equipment shall be maintained in current calibration.

Products Requiring Dielectric Voltage Withstand Test:

<u>Product</u>	<u>Test Voltage</u>	<u>Test Time</u>
All products covered by this Report.	1000V	60 s
	or	
	1200V	1 s

11.2 Polarization Test

Method

As a routine production-line test, each appliance provided with a manually operated, line-connected, single-pole switch for appliance "on-off" operation; an Edison-base lampholder or an Edison-base fuseholder; or a receptacle shall be tested for electrical continuity between the grounded supply circuit conductor of the attachment plug (wide blade of 2-wire plug) and the part of the appliance that is intended to be connected to the grounded supply circuit conductor of the attachment plug. The polarity shall be determined either visually or through the use of an electrical test. Equivalently, polarity may be verified between the ungrounded supply circuit conductor of the attachment plug and the part of the appliance that is intended to be connected to the ungrounded conductor.

Test Equipment

Any indicating device, such as an ohmmeter, a battery and buzzer combination, or the like, is to be used to determine compliance with the requirement.

Products Requiring Polarization Test:

All products covered by this Report.

12.0 Revision Summary

The following changes are in compliance with the declaration of Section 8.1:

[illegible]