



Model: RH-UC7, RH-UC7-BLK
Manual Revision: 2024A

Range Hood

OWNER'S MANUAL

Under Cabinet Series

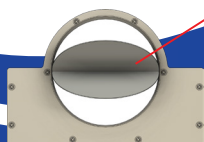
6 Speeds
Hand Gesture Control | Remote Control



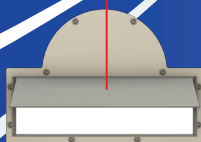
Air Damper

Caution !

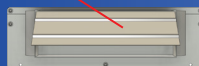
*Make sure the air damper can
open freely after the installation.*



6\"/>



3-1/4\"/>



3-1/4\"/>

***Comes with 1 adapter of your choice by default.
4 other optional adapters available to fit your need.***

**** The adapters are interchangeable between each other.
* Contact us if you wish to exchange your existing adapter to a different one.***

**** Unpack & Check for Shipping Damages ****

**** Test Run Before Installation ****

Steps To Test Run Before Installation

IMPORTANT!

Wear gloves to protect against sharp edges.

PLEASE FOLLOW THESE INSTRUCTIONS TO TEST THE RANGE HOOD BEFORE INSTALLATION FOR ANY DEFECTS OR SHIPPING DAMAGE:

1. Remove the range hood and accessories from the package carefully.
2. Place the range hood on a flat stable surface, remove the baffle filter and check for any dents or damages on the range hood body.
3. Remove the loosen parts if there's any.
4. Plug the range hood into a 120V AC power source. Press the power button once and then any of the speed buttons to turn it on.
5. Check each speed variation and pay attention to the noise level to make sure there isn't any unusual noise besides it coming from the wind blowing. Press the Light Button to check the lights.
6. Verify all functions, as instructed in Page 9, are working properly.
7. Refer to Range Hood Troubleshooting in Page 12 for general issues and solutions.

Please read all instructions carefully before proceeding further to prevent the risk of fire, electric shock, personal injury or damage to the range hood. This manual provides a general insight on the installation and may not include solutions for all possible issues that may occur.

In case of this manual destroyed or lost, please visit <https://www.awoco.com> and download a digital version.

INSTALLATION OVERVIEW

1. Unpack the range hood and check for any physical damage on the body.
2. Test run the range hood and check if all functions are working properly. Refer to Page 9 for functionalities.

STOP!

DO NOT install the range hood if it's defective. Contact the seller immediately.

3. If all is fine, install the range hood as instructed in this manual. Refer to Page 7.
4. Test run the range hood again when the installation is finished. Refer to Page 12 for troubleshooting.

POSSIBLE TOOLS NEEDED:

- Marker / Pencil;
- Jig Saw or Reciprocating Saw;
- Screwdrivers or Power Drill;
- Level;
- Measuring Tape;
- Knife;
- Duct / Foil Tape;
- Screws.

2 PEOPLE ARE REQUIRED FOR THE INSTALLATION.



Important Safety Instructions	4
Installation Preparations	5
Venting Requirements	5
Venting System Setup	5
Minimum Duct Size	6
Electrical Requirement	6
Installation	7
Installing the Range Hood	7
Connecting the Vent System	7
Electrical Connection	7
Installing the Oil Collector	8
Installing the Baffle Filters	8
Completing the Installation	8
Range Hood Use	9
Range Hood Control Panel	9
Range Hood Care	11
Clean the Exterior Surfaces	11
Clean or Replace the Baffle Filters	11
Replace the LED Lamps	11
Range Hood Troubleshooting	12
Warranty	13

IMPORTANT SAFETY INSTRUCTIONS

TO REDUCE THE RISK OF FIRE, ELECTRIC SHOCK OR PERSONAL INJURY, PLEASE READ THE FOLLOWING CAREFULLY BEFORE ATTEMPTING TO ASSEMBLE, INSTALL, OPERATE OR MAINTAIN THE RANGE HOOD:

- Always disconnect, lock and tag the power source before installing or servicing the range hood. Failure to do so may result in fire, shock or serious injury.
- Installation and electrical wiring must be done by qualified technician(s) in accordance with all applicable codes and standards, including fire-rated construction.
- When cutting or drilling into walls or ceilings, please be careful not to damage any electrical wirings and other hidden utilities.
- Verify and ensure the rated voltage and frequency of the range hood is in compliance with the nearby power source.
- Always unplug the range hood from the power source before cleaning it.
- Use the range hood only as directed in this manual. Do not use it to vent hazardous or explosive materials or vapors.
- Clean the baffle filters regularly to prevent it become blocked or clogged. Good air flow is essential for the range hood to work properly.
- Do not install, repair or replace any parts of the range hood unless you are instructed to do so by the manufacturer.
- Do not tamper with or modify the PCB.
- This range hood model requires a duct to vent the air outside. Do not vent the air into spaces within walls, ceilings, attics, crawl spaces or garages.

TO REDUCE THE RISK OF A RANGE TOP GREASE FIRE:

- Never leave surface units unattended at high settings. Boilovers cause smoking and greasy spillovers that may ignite. Heat oils slowly on

low or medium settings.

- Always turn the hood ON when cooking at high heat or when flambeing food (i.e. Crepes Suzette, Cherries Jubilee, Peppercorn Beef Flambé).
- Clean ventilating fans frequently. Grease should not be allowed to accumulate on the fan or filter.
- Use proper pan sizes. Always use cookware appropriate for the size of the surface element.

TO REDUCE THE RISK OF INJURY TO PERSONS IN THE EVENT OF A RANGE TOP GREASE FIRE:

- **SMOTHER FLAMES** with a close-fitting lid, cookie sheet or metal tray, then turn off the burner. **BE CAREFUL TO PREVENT BURNS.** If the flames do not go out immediately, **EVACUATE AND CALL THE FIRE DEPARTMENT.**
- **NEVER PICK UP A FLAMING PAN** - you may be burned.
- **DO NOT USE WATER**, including wet dish cloths or towels - a violent steam explosion may result.
- Use a fire extinguisher **ONLY** if:
 - You have a Class ABC extinguisher, and you already know how to operate it.
 - The fire is small and contained in the area where it started.
 - The fire department is being called.
 - You can fight the fire with your back to an exit.

TO REDUCE THE RISK OF PERSONAL INJURY IN THE EVENT OF A GAS LEAK:

- Extinguish any open flame.
- **DO NOT** turn on the lights or any type of appliance.
- Open all doors and windows to disperse the gas. If you still smell the gas, call the gas company, fire department, or 911 immediately.

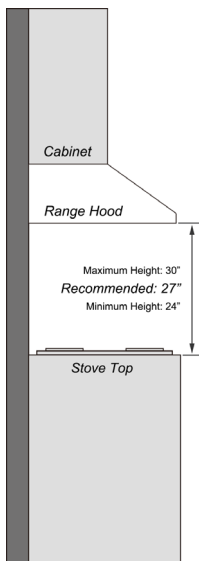
Read and Save These Instructions

INSTALLATION PREPARATIONS

VENTING REQUIREMENTS

DO

- Have the venting system go vertically from the range hood to the roof if possible.
- Have 24"-30" distance between the cooktop and the range hood. 27" is recommended.
- Use uniform duct of 6" round duct or 3-1/4 x 10" rectangular duct or larger.
- Use metal duct only. Rigid metal duct is recommended. Semi-rigid aluminum duct is also acceptable for easy connection. Please refer to your city building code for vent requirement.
- Make sure there is a minimum of 24" of straight vent between the elbows if more than 1 elbow is used.
- Use minimal numbers of elbows and the shortest route for the venting system for a better performance.
- Use aluminum foil tape or duct tape to seal all joints in the venting duct system.
- Use caulking silicone to seal exterior wall or roof opening around the cap.
- Always keep the duct clean to ensure proper airflow.



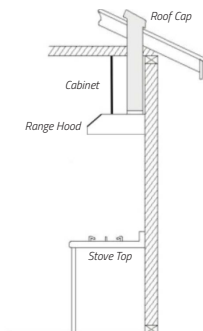
DO NOT

- End the venting system in an enclosed area indoors.
- Use plastic vent.
- Use no more than three 90° elbows.
- Install 2 elbows together.
- Install the range hood outside of the recommended height.
- Reduce the duct size below the recommended size.

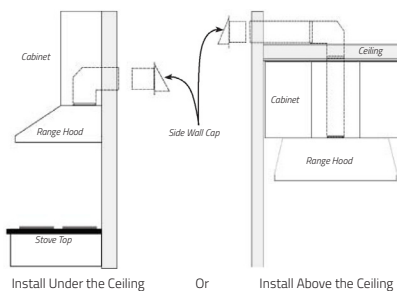
VENTING SYSTEM SETUP

- This range hood is 8" top venting through the roof or wall.

Top Venting Roof Exhaust



Top Venting Wall Exhaust



Install Under the Ceiling

Or

Install Above the Ceiling

INSTALLATION PREPARATIONS

IMPORTANT!

- If long duct run is needed, increase the duct size from 8" to 9" or 10".
- If a reducer is needed, use a long reducer instead of a pancake reducer and install it as far away from the range hood as possible. Reducing the duct size will restrict and decrease the speed of the airflow and hence lower the range hood's performance.
- If transitions or turns are needed, install them as far away from the range hood as possible and keep the distance between the 2 as far apart as possible.
- The minimum mounting height should be no less than 24" and the maximum mounting height should be no more than 30".
- Also refer to the owner's manual of the stove top for the height clearance requirement and the recommended mounting height above the range.

Note

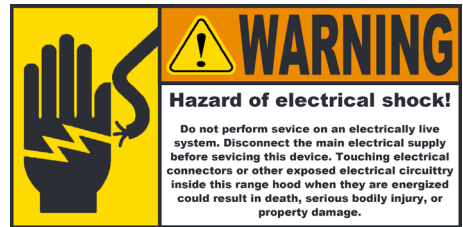
- *It is important to install the range hood at the proper mounting height. Hoods mounted too low could result in heat damage and fire hazard while hoods mounted too high will be out of reach and hence reduce its performance and efficiency.*

MINIMUM DUCT SIZE

- Round:
 - 6" Round Top Vent: 6" minimum.
 - 7" Round Top Vent: 7" minimum.
 - 8" Round Top Vent: 8" minimum.
- Rectangular: 3-1/4" x 10" minimum.

Note

- *Make sure the ductwork and the vent out adapter at the roof/wall are also 8" minimum.*
- *Using less than 8" ducts or vent out adapter will limit the air flow and lower the range hood's performance.*



IMPORTANT!

Observe all governing codes and ordinances.

It is the customer's responsibility:

- To contact a qualified electrical installer;
- To ensure that the electrical installation is in compliance with applicable codes and standards.

ELECTRICAL REQUIREMENTS

- A 120V, 60Hz., AC only, 3A fused electrical circuit is required.
- Wire sizes and connections must conform with the power rating of the range hood and all applicable codes and standards.
- DO NOT have a fuse in the neutral or ground circuit.
- The 3-prong outlet should be grounded. If the power cord plug is not used, the power cord's green wire should be connected to ground. Check with a qualified electrician if you are not sure that the range hood is properly grounded.
- DO NOT ground to a gas pipe.
- The range hood must be connected with copper wire/plug only.
- The range hood should be connected directly to the fused disconnect box (or circuit breaker) through flexible armored or non-metallic sheathed copper cable. ETL listed strain relief must be provided at each end of the power supply cable.

INSTALLATION

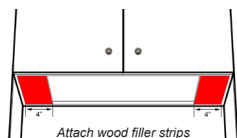
INSTALLATION INSTRUCTIONS

CAUTION!

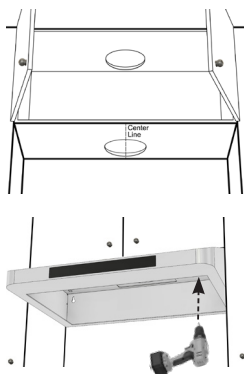
Wear gloves to protect against sharp edge.

INSTALLING THE RANGE HOOD

- For installing under the cabinet with recessed bottom, attach a 4" wide wood filler strip (not provided) on each side.



- Make 2 cutouts on the top and bottom of the cabinet that align with the outlet of the top vent on the Hood. The diameter of the cutout should be slightly larger than the diameter of the duct.



The following steps require 2 or more people:

- Draw the power cord through the cabinet access opening and center the range hood beneath the cabinet.
- From inside of the range hood, install a screw into the exact center of each hole.
- Tighten all screws until the range hood is securely mounted to the bottom of the cabinet.
- Release the range hood.

CAUTION

Make sure the range hood is securely mounted before releasing.

CONNECTING THE VENT SYSTEM

- Depending on the vent adapter that comes with the range hood, use metal duct (or semi-rigid aluminum duct, follow the local building codes) with matching size* to connect the top exhaust on the Range Hood to the Roof / Wall Cap.
- Use aluminum foil tape or duct tape to seal all connections.

Note

**"matching size" refers to:*

- 6" round metal duct for 6" round top adapter.
- 8" round metal duct for 8" round top adapter.
- 3-1/4" x 10" rectangular metal duct for 3-1/4" x 10" rectangular top adapter.

ELECTRICAL CONNECTION

- This range hood comes with a power cord with a 3-prong plug. Connect the power cord to a designated grounded standard 110V outlet.

WARNING

Electrical Shock Hazard

Disconnect power before servicing

- In case of a direct connection to the house wiring is preferred, do the following:
 - Disconnect the power.
 - Cut off the plug from the power cord.
 - Connect the wires from the power cord to the wires from the house wiring using UL listed wire connectors.
 - Store the excess wires in the wiring box.
 - Reconnect the power.

INSTALLATION

INSTALLING THE OIL CONTAINER

- Locate 2 Brackets at the hood bottom, one on each side, near the back of the range hood.
- Align the oil container with the hood body and slide it, from front to back, into the Brackets.

INSTALLING THE BAFFLE FILTERS

For 30" model:

- Peel off the protective film from the baffle filters if there's any.
- Align the filter horizontally with the frontend facing the user and the filter handle facing the ground.
- Lift the backend of the filter and align it to fit into the back slot of the hood.
- Raise the frontend of the filter while pushing the filter toward the back of the hood by applying pressure to the filter handle until the frontend of the filter reaches the LED metal pane and can't go any further.
- Release the pressure on the filter handle to lock the filter into place.
- Repeat these steps to install the rest of the filters.

For 36" model:

- Peel off the protective film from the filters if there's any.
- Align the filter's bottom pins to the holes on the hood.
- Pull and hold the latch. The top pins of the filter will retract into the filter while the latch is pulled.
- Keep pulling and holding the latch and push the top end of the filter upwards till it reaches the hood.
- Release the latch to lock the filter in place.
- Repeat these steps to install the rest of the filters.

Note

- *Make sure all baffle filters are securely locked and won't come off.*
- *These Baffle Filters collect the oil/grease while you cook. There's no need to install other types of filters.*
- *Clean the Baffle Filters every 2 to 3*

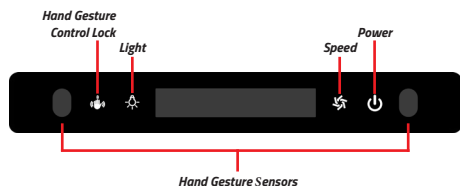
months regularly. Follow the cleaning guide in Page 11.

COMPLETING THE INSTALLATION

Turn blower ON from the control panel. Check all lights and fan operations.

RANGE HOOD USE

Range Hood Control Panel



HAND GESTURE CONTROL

- **To Enable/Disable Hand Gesture Control:**
 - Touch the **Power** button once to turn on the hood.
 - Touch the **Hand Gesture Control Lock** button once to enable/disable the function to control the hood with hand gestures.
- **Controlling The Hood With Hand Gestures:**
Note

The **Hand Gesture Control** function must be enabled first (the **Hand Gesture Control Lock** button lights up).

- **Swiping from left to right**
 - *Swipe once* to turn on the hood at the lowest speed F1. The lamp will also be turned on at the max brightness.
 - *Swipe again* will increase the speed to F2. Each following consecutive swipe will increase the speed level by 1 until the highest speed F6 is reached.
- **Swiping from right to left**
 - *Swipe once* will decrease the speed level by 1.
 - Upon reaching the lowest speed level F1, swipe again will shut off the hood immediately. If the lamp is on, this action will also turn off the lamp.
 - *Swipe once* will immediately shutoff the hood.

Note

When the **Hand Gesture Control** function is disabled (the **Hand Gesture Control Lock** button greys out), the range hood no longer responds to the hand movements. It can only be operated

through the control panel or via the remote.

REMOTE CONTROL SENSOR

- The remote control sensor receives infrared (IR) signal from the remote control.
- The maximum distance for IR data transmission is 10 feet and requires direct line of sight.
 - *The transmission distance may vary depending on the room temperature and the condition of the battery in the remote control.*

DELAYED AUTO SHUT-OFF

- When the hood is operating in any speed, touch the **Power** button once will activate the **Delayed Auto Shut Off** function.
- Touch the **Light or Speed** button to adjust the duration of the countdown timer.
 - *The timer can be adjusted between 1 minute to 30 minutes using the **Light or Speed** button. (10 minute by default.)*
 - *The timer will start immediately once it's set. When it reaches 0, the **Range Hood** and the **Light** will be turned off automatically.*

CLOCK / CURRENT TIME DISPLAY

- When the **Delayed Auto Shut Off** function is **not activated**, the **LCD Display** will show the current time of the day.

THE CLOCK CAN ONLY BE SET WHILE THE BLOWER IS OFF.

- To set the Clock:
 - *Touch and hold the **Hand Gesture Control Lock** button until the hour indicator starts to flash.*
 - *Touch the **Light** button or **Speed** button to adjust to the desired hours.*
 - *When done setting the hour, touch the **Hand Gesture Control Lock** button again. The minute indicator will flash.*
 - *Touch the **Light** button or **Speed** button to adjust to the desired minutes.*
 - *When done setting the minutes, touch the **Hand Gesture Control Lock** button once*

RANGE HOOD USE

to confirm and save all settings.

- Touch the **Light** button to check and validate the time.

- When the *Delayed Auto Shut Off* function is activated while the blower is running, a countdown timer will show up in the **LCD Display**.
- When the countdown timer is running, touching the **Speed** button once will cancel the *Delayed Auto Shut off* function and increase the speed by 1 level.

LIGHT - 2 LEVELS

- Touch the **Light** button once and the lamp will turn on at the maximum level.
- Touch the **Light** button again and the lamp will reduce the brightness by 50%.
- Touch the **Light** button the 3rd time will turn off the lamp.
- The Light button operates independently from the **Power** button. It works even when the range hood is not turned on.
- Always turn off the lamps before powering off the range hood.
- The **Delayed Auto Shut Off** function will turn off the **Light** automatically when the timer reaches 0.

SPEED

- While the range hood is off:
 - Touch the **Speed** button once will turn on the Range Hood on the lowest speed (F1).
 - Each following consecutive touch of the **Speed** button will increase the speed level by 1.
 - When the highest speed level (F6) is reached, touching the **Speed** button again will reset the speed level to the start of the speed cycle - the lowest speed (F1).
 - Cycle through all 6 speed levels until the desired speed is reached.

POWER

- Touch the **Power** button twice in quick succession while the range hood is running to shut it off immediately.

WARNING

Read all instructions and warnings before using the hood.

- DO NOT use the hood when there are no safety grills and filters.
- NEVER dispose cigarette ashes, ignitable substances, or any foreign objects into blowers.
- NEVER leave the cooking appliances unattended. When frying, the oil in the pan can easily overheat and catch on fire. The risk of self-combustion is higher when the oil has been used several times.
- NEVER cook on "open" flames under the range hood. Check deep-fryers during use: Superheated oil may be flammable.

RANGE HOOD CARE

CLEANING

WARNING

- To reduce the risk of electrical shock, DO NOT clean the hood while it's operating.
- Never put your hands into the area housing the fan when the fan is operating.

Cleaning the Exterior Surfaces:

IMPORTANT

To avoid damage to the exterior surfaces:

- DO NOT use corrosive or abrasive detergent.
- DO NOT use steel wool, scoring pad or steel brushes. Use a paper towel or soft cloth or nonabrasive sponge instead.
- DO NOT use salt solutions, disinfectants, bleaches or cleaning compound that contains harmful chemicals.

Cleaning Method:

- Noncorrosive or nonabrasive liquid detergent soap or all-purpose liquid cleanser.
- Wipe the surfaces with a damp paper towel or soft cloth or nonabrasive sponge.
- Rinse with clean water.
- Wip dry with dry towel or cloth.

Note

- The nonabrasive stainless steel polisher can be applied when done cleaning to retain the stainless luster and grain.
- Always follow the instruction of the polisher.

Cleaning the Stainless Steel Baffle Filters:

- Reverse the steps from "Installing the Baffle Filters" in Page 8 to remove the filters.
- Wash the filters in the dishwasher, or soak it into hot or warm water with dish detergent for half an hour, then wipe the filter clean. Repeat these steps until there's no oil residue remains.
- Let the filters dry thoroughly.
- Make sure the spring release handle is toward the front, align and insert the filter.

- Pull the spring release handle and push the filter into position.
- Release the handle.
- Repeat the steps for the remaining filters.

REPLACING THE FILTERS

- Replace the baffle filters immediately should they become worn out due to aging or prolonged usage.

REPLACING THE LED LAMPS

WARNING

Electrical Shock Hazard

Disconnect power before servicing

Wear gloves to protect against sharp edges

- This range hood uses 1x 3W rectangular LED.
- If the LED lamp is defective and needs to be replaced, contact Awoco Customer Support for a free replacement.

RANGE HOOD TROUBLESHOOTING

Before Calling for Service

Issue	Possible Cause / Solution
The range hood doesn't turn on	<ul style="list-style-type: none">Check if the range hood is plugged in. Make sure that all power is turned ON, the fuse isn't blown and all electrical wirings are properly connected.
The range hood turns on but the LED light doesn't	<ul style="list-style-type: none">Replace the defective LED assembly. Refer to Range Hood Care section for instructions.
The range hood vibrates when the blower is on	<ul style="list-style-type: none">Check and tighten the mounting screws to secure the hood to the cabinet or wall properly.
The blower or fan seems weak	<ul style="list-style-type: none">Check that the duct size used is matching with or larger than the size of the adapter. The range hood WILL NOT function efficiently with insufficient duct size.Check if the duct is clogged or the damper (half-circular flapper) is not installed correctly or opening properly. A tight mesh on a side wall cap might also cause restriction to the air flow.
The lights work but the blower is not spinning at all or is rattling	<ul style="list-style-type: none">The blower might be jammed or scraping the bottom due to shipping damage.Disconnect the power cord, remove the fan grill and the fan blade, might see the fan blade or/and motor is not in the proper position (offset from the center). Try to fix/adjust it or please contact us immediately.
The hood is not venting out properly	<ul style="list-style-type: none">Make sure the distance between the stove top and the bottom of the hood is within recommended 24" and 30" in distance. *Due to different ceiling height configurations, the recommended height may not be applicable.Reduce the number of elbows and length of duct work. Check if all joints are properly connected, taped and sealed.Make sure the power is on high speed for heavy cooking.
The fan wheel is rattling or out of balance	<ul style="list-style-type: none">Disconnect the power cord, then remove the fan grill and release the screw in the center of the fan wheel. Take the fan wheel down and then reinsert the fan wheel back to the proper position and tighten the screw.If the fan wheel is out of balance, locate and press on the higher side with moderate force to adjust its position. (This aluminum fan wheel can be adjusted by hand, please try it a few times until it is balanced.)

WARRANTY

This product is warranted for a limited period of **ONE YEAR Parts, begins from the date of purchase.**

This limited warranty is applied to the original retail purchaser and valid only for products purchased for home use in the continental United States of America.

This limited warranty is non-transferable and does not extend to the subsequent owners of this product.

Any applicable implied warranties, including the warranty of merchantability, are limited in duration to a period of express warranty as provided herein beginning with the date of original purchase at retail and, no warranties, whether express or implied, shall apply to this product thereafter.

In the event of the product fail to work properly due to a defect in manufacturing materials or workmanship under normal home use, during the warranty period mentioned above, subject to the conditions and limitations set forth below, Awoco will, at our options, either repair or replace any part of our products proven defective by reason of improper materials or workmanship:

- Proof of original retail purchase is required to receive warranty service within the limited warranty period.
- Repair parts or replacement products will be provided by Awoco, free of charge, on an exchange basis, and will be either new or reconditioned.

This Limited Warranty Does Not Cover:

- Consumable parts such as light bulbs, stainless steel baffle filters.
- The natural wear of finish, and wear due to improper maintenance, use of corrosive and abrasive cleaning products, pads, and oven cleaner products.
- Chips, dents or cracks on the product caused by transportation and handling.
- Damage of product caused by accidents, pests and vermin, lightning, wind, fire, floods or acts of God.

- Damage of product caused by unauthorized modification or alteration, or if it is used for other than the intended purpose, or any water leakage where the unit was not installed properly.
- Damage of product caused by incorrect electrical wiring, commercial or industrial use, or use of any cleaning products not recommended in this manual.
- Damage of product due to product misuse, abuse, improper installation, unauthorized repair or maintenance.
- Any loss of properties or any costs associated with removing, servicing, installing, or determining the source of problems with our products.

To Receive Warranty Service:

- Contact the seller or distributor from which you purchase the product. Please confirm the terms of your dealer's or distributor's policies prior to contacting. Or contact us directly.
- Provide the product identification information, such as model number and lot number, and proof of original purchase.
- Describe the issue you are experiencing in detail.

Product Support and Additional Information:

If you need assistance using your product or you would like to start the warranty service:

- Contact us at 1-888-412-3428, between 10 AM and 5 PM, Monday - Friday, Pacific Time.
Or
- Contact us at <https://awoco.com/pages/contact-us>.



Website: www.awoco.com

Customer Support: 1-888-412-3428

Email: sales@awoco.com