



COMRADE WALL-HUNG LAVATORY

- Vitreous china
- Rear overflow
- Soap depression
- Faucet ledge (faucet not included)

☐ **0124.024** With wall hanger (Illustrated)
Faucet holes on 102mm (4") centers

☐ **0124.131*** For concealed arms support
Faucet holes on 102mm (4") centers

Nominal Dimensions:

508 x 464mm
(20" x 18-1/4")

Bowl sizes:

381mm (15") wide,
276mm (10-7/8") front to back,
159mm (6-1/4") deep

Compliance Certifications -

Meets or Exceeds the Following Specifications:

- ASME A112.19.2M for Vitreous China Fixtures

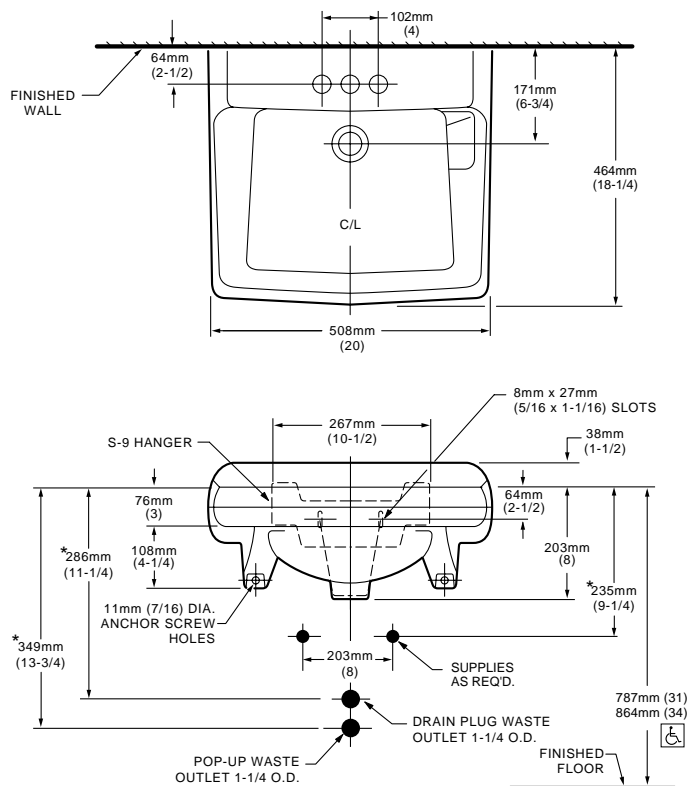
To Be Specified

- ☐ Color: ☐ White ☐ Bone ☐ Silver
☐ Fawn Beige
- ☐ Faucet*:
- ☐ Faucet Finish:
- ☐ Supplies:
- ☐ 1-1/4" Trap:
- ☐ Nipple:
- ☐ Concealed Arms Support (by others):

* See faucet section for additional models available



Top of front rim mounted 864mm (34") from finished floor.
**MEETS THE AMERICAN DISABILITIES ACT GUIDE-
LINES AND ANSI A117.1 ACCESSIBLE AND USEABLE
BUILDINGS AND FACILITIES - CHECK LOCAL CODES.**



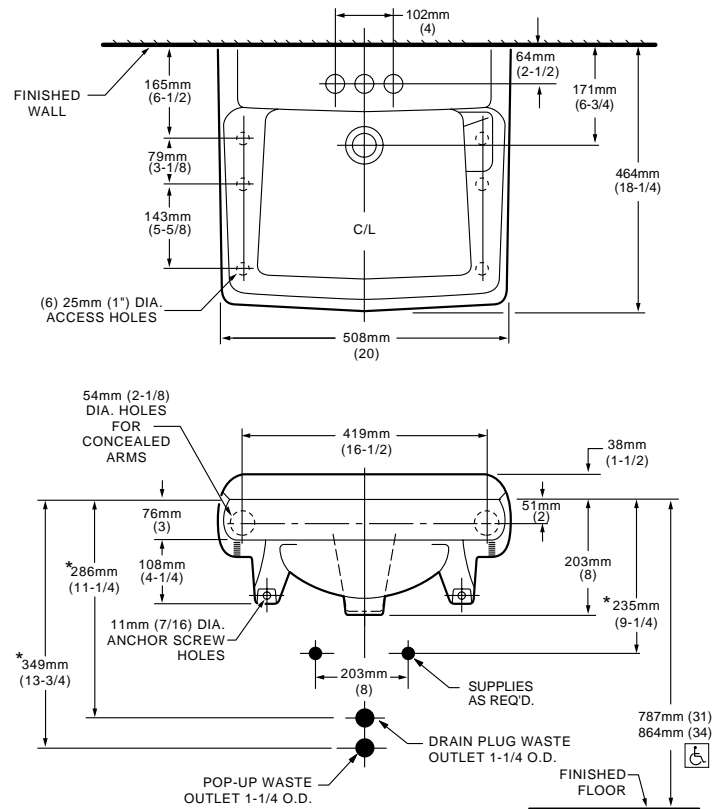
NOTES:

* DIMENSIONS SHOWN FOR LOCATION OF SUPPLIES AND "P" TRAP ARE SUGGESTED. PROVIDE SUITABLE REINFORCEMENT FOR ALL WALL SUPPORTS. FITTINGS NOT INCLUDED AND MUST BE ORDERED SEPARATELY.

IMPORTANT: Dimensions of fixtures are nominal and may vary within the range of tolerances established by ANSI Standard A112.19.2.

These measurements are subject to change or cancellation. No responsibility is assumed for use of superseded or voided pages.

* Rough-in for Concealed Arms shown on reverse.



NOTES:

LAVATORY DESIGNED TO MEET ADA HANDICAPPED STANDARDS WITH MOUNTING HEIGHT SET AT 864MM (34") ABOVE FINISHED FLOOR.

* DIMENSIONS SHOWN FOR LOCATION OF SUPPLIES AND "P" TRAP ARE SUGGESTED.

FITTINGS NOT INCLUDED AND MUST BE ORDERED SEPARATELY.

PROVIDE SUITABLE REINFORCEMENT FOR ALL WALL SUPPORTS.

CONCEALED ARM SUPPORT AS REQUIRED TO BE FURNISHED BY OTHERS.

IMPORTANT: Dimensions of fixtures are nominal and may vary within the range of tolerances established by ANSI Standard A112.19.2

These measurements are subject to change or cancellation. No responsibility is assumed for use of superseded or voided leaflet.