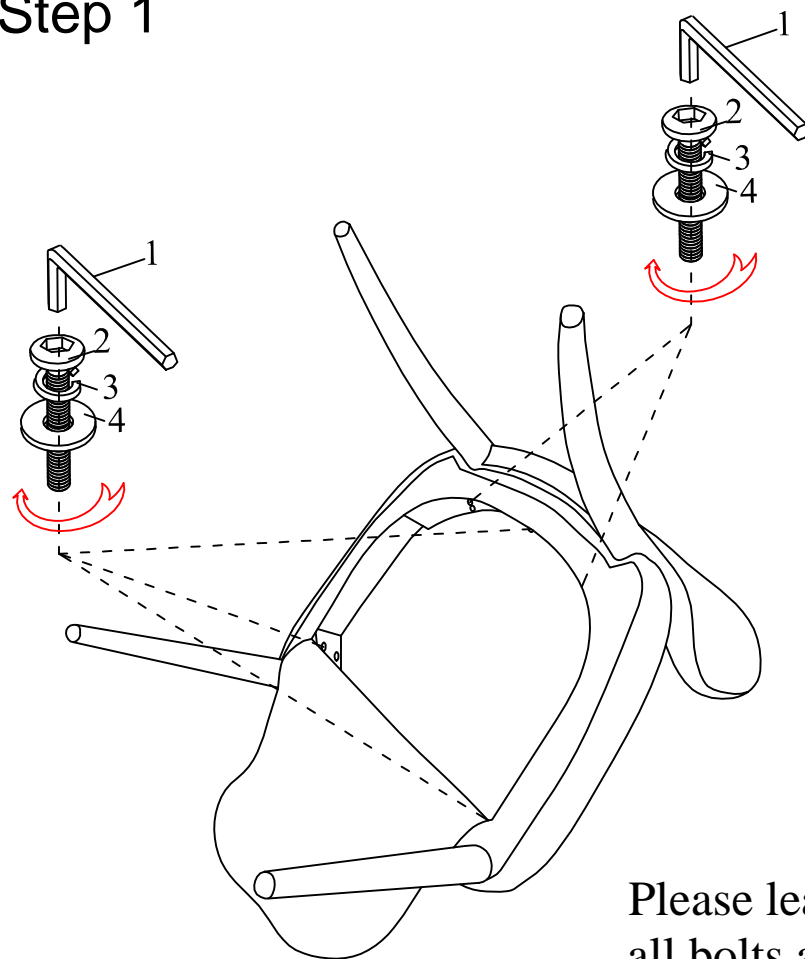


ASSEMBLY INSTRUCTIONS

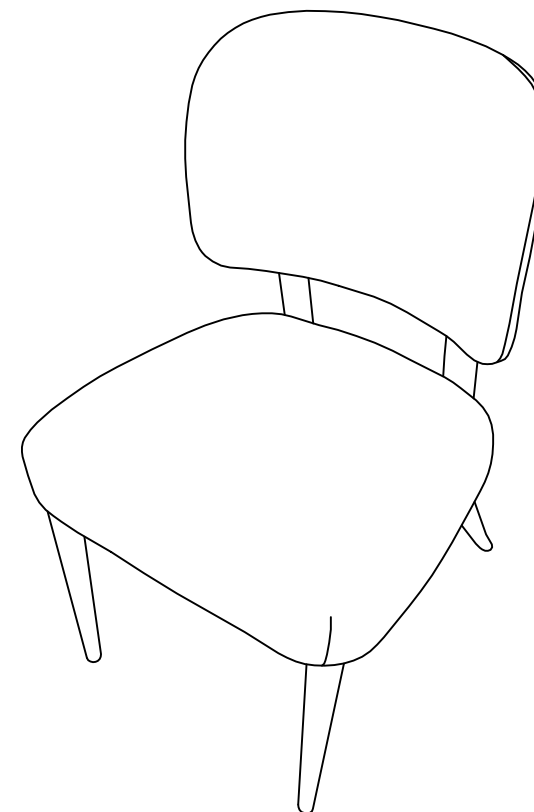
80210-XXX-2P

Finish






Step 1



Please leave bolts loosened until
all bolts are placed before
tightening completely



Hardware

1		"L" Wrench	1pc
2		Bolt 8*50mm	5pcs
3		Spring Washer	9pcs
4		Flat Washer	9pcs
5		Bolt 8*60mm	4pcs