

Avant DECOR

INSTALLATION GUIDE

Get ready to transform your space with the beautiful look and easy, DIY install of Avant Tiles!

Please read the instruction manual entirely before beginning the install. If you do not believe you can do it yourself, please contact a licensed contractor, carpenter, or professional installer.

BEFORE INSTALLATION

Avant tiles can be installed over most sound surfaces if they are clean, flat, smooth, dry and free of dust, wax, grease, dirt, and soap.

Acceptable surfaces include:

- Existing Backsplash
- Smoothly primed/Painted Wall
- Metal
- Glass
- Wallpaper
- Sanded Wood Plank

Not recommended surfaces:

- Brick
- Stone
- Stucco
- Oiled Walls
- Cracked Wall

If installing on dry-wall, plywood, MDF or particleboard, apply a primer first and wait to dry for 72 hours before installation.

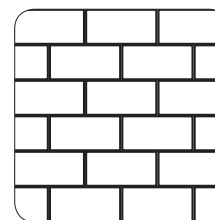
On a newly painted surface, allow at least 21 days to dry completely before installing.

For latex, repainted, or textured walls, follow these preparation instructions:

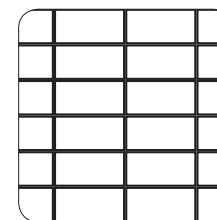
1. Sand the surfaces with sanding paper
2. Clean the wall with a damp cloth
3. Allow surfaces to completely dry (24 hours)

It's recommended to lay out the entire project on a flat surface to ensure you have enough tiles and your layout is right. Be sure to account for wastage that may be needed for cutouts, errors, and edges.

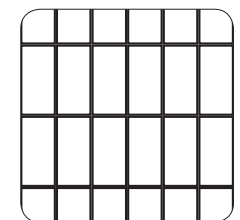
INSTALL IDEAS



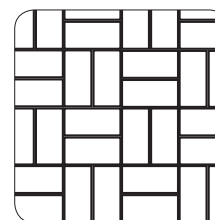
Subway



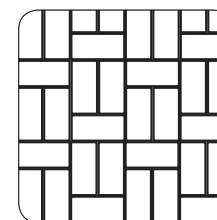
Subway #2



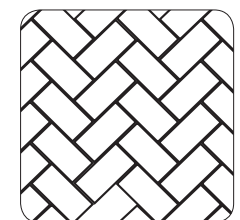
Stacked



Basketweave



Basketweave #2



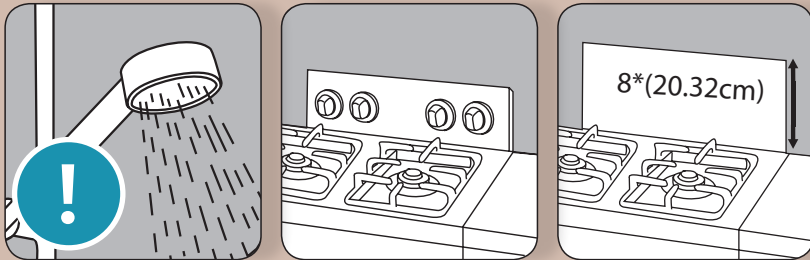
Herringbone

NOTICES

Tiles are 100% waterproof, but have not been adequately tested for prolonged, direct contact with water. **Carefully consider subsurfaces and use when choosing to install in shower or shower area.**

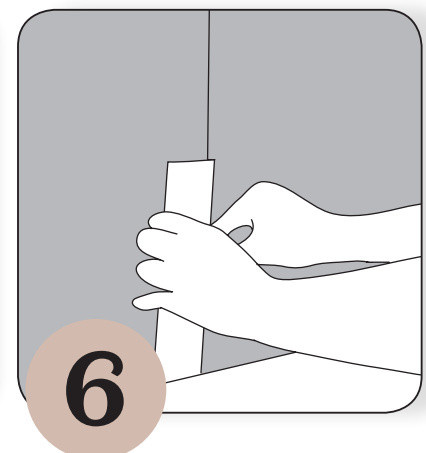
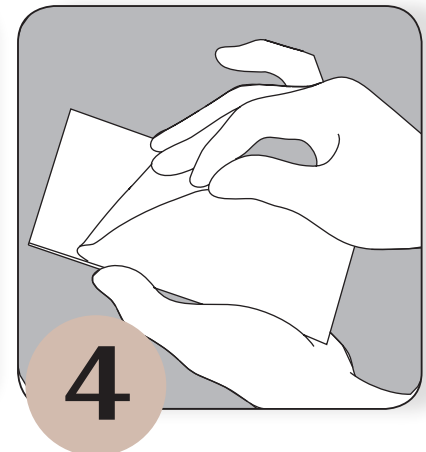
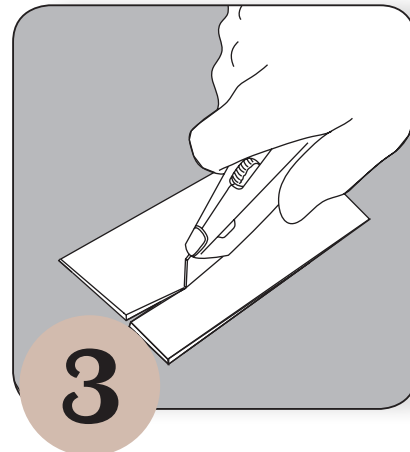
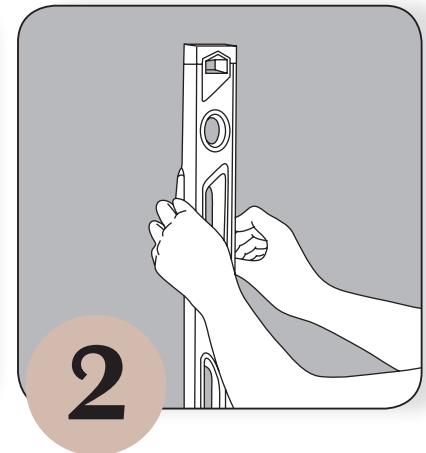
Tiles must be installed at least 8" away from the open flame.

If your stove does not have a back panel or metal cover, it is important to leave a 8" space between the stove and the tiles.



INSTALLATION

1. Thoroughly clean wall from all dust, wax, scum, and soap. Preferably use a TSP degreaser to clean. Allow to dry.
2. Draw a leveled guideline on the wall. Mark at least one horizontal and one vertical guideline.
3. To cut the tiles, use your preferred tool from the recommended list and cut from the back to avoid damaging the tile.
4. Peel back the corner of the plastic protector, making sure to keep adhesive untouched.
5. Adhere the first tile firmly against the wall, keeping in line with the guideline, peeling back the adhesive a little at a time and pressing down.
6. Continue laying the tiles, connecting the edges against each other. Firmly press down on each tile to adhere to wall.



Avant DECOR

INSTALLATION GUIDE

Get ready to transform your space with the beautiful look and easy, DIY install of Avant Tiles!

Please read the instruction manual entirely before beginning the install. If you do not believe you can do it yourself, please contact a licensed contractor, carpenter, or professional installer.

BEFORE INSTALLATION

Avant tiles can be installed over most sound surfaces if they are clean, flat, smooth, dry and free of dust, wax, grease, dirt, and soap.

Acceptable surfaces include:

- Existing Backsplash
- Smoothly primed/Painted Wall
- Metal
- Glass
- Wallpaper
- Sanded Wood Plank

Not recommended surfaces:

- Brick
- Stone
- Stucco
- Oiled Walls
- Cracked Wall

If installing on dry-wall, plywood, MDF or particleboard, apply a primer first and wait to dry for 72 hours before installation.

On a newly painted surface, allow at least 21 days to dry completely before installing.

For latex, repainted, or textured walls, follow these preparation instructions:

1. Sand the surfaces with sanding paper
2. Clean the wall with a damp cloth
3. Allow surfaces to completely dry (24 hours)

It's recommended to lay out the entire project on a flat surface to ensure you have enough tiles and your layout is right. Be sure to account for wastage that may be needed for cutouts, errors, and edges.

TOOLS

Tools needed:

- Measuring tape
- Pencil
- Level
- Straightedge or Speed Square
- Sandpaper (if needed for preparation)

Tools for cutting tiles: (Choose one)

- Utility Knife
- Scissors (Heavy Duty)
- Jig Saw
- Tin Snip
- Chop Saw