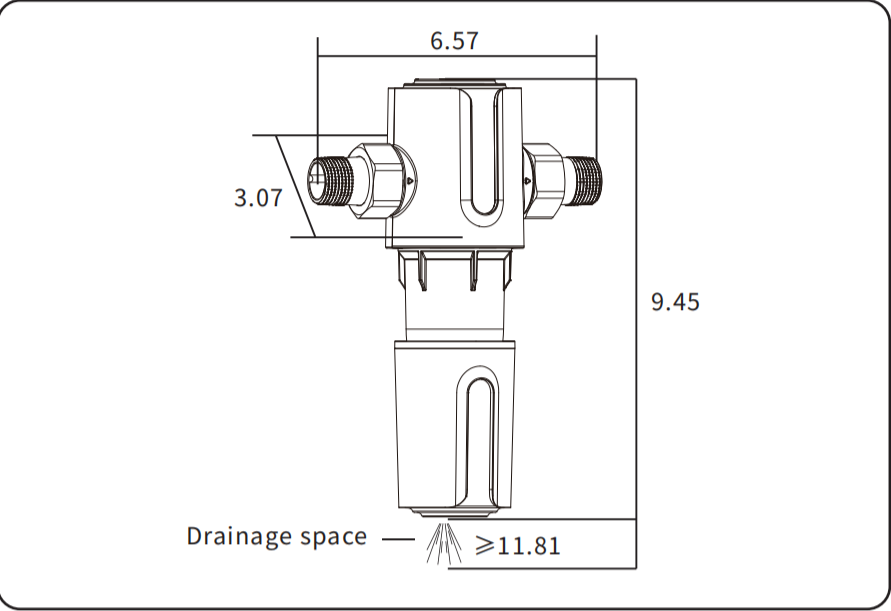


IV. Technical Parameters

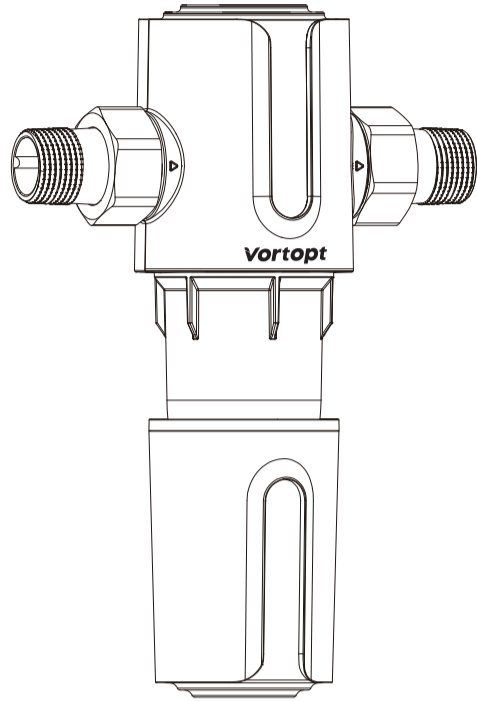
Product Name	REVERSE FLUSH PRE-FILTER
Product Model	Q700
Water purification flow rate	1585 Gallons /h
Rated total water purification	1769955 Gallons
Applicable water pressure	0.1~1MPa
Applicable water temperature	41~100.4°F
Filtration accuracy	40μm
Connector size	3/4"

Product Size Chart (unit: inch)
(Note: If the size does not match the actual product, please refer to the actual product.)



Vortopt

REVERSE FLUSH PRE-FILTERINSTRUCTION MANUAL



If you need any assistance during installation or use, we have a professional customer service team and will solve your problem in a timely manner.

I. Product Introduction

The Pre-Filter is mainly used to intercept particle impurities, sediment, rust, floating materials and other pollutants in the water. For downstream plumbing, water purifiers, water heaters, wall-hung furnaces, washing machines, shower baths and other end water-related equipment play a positive protective role.

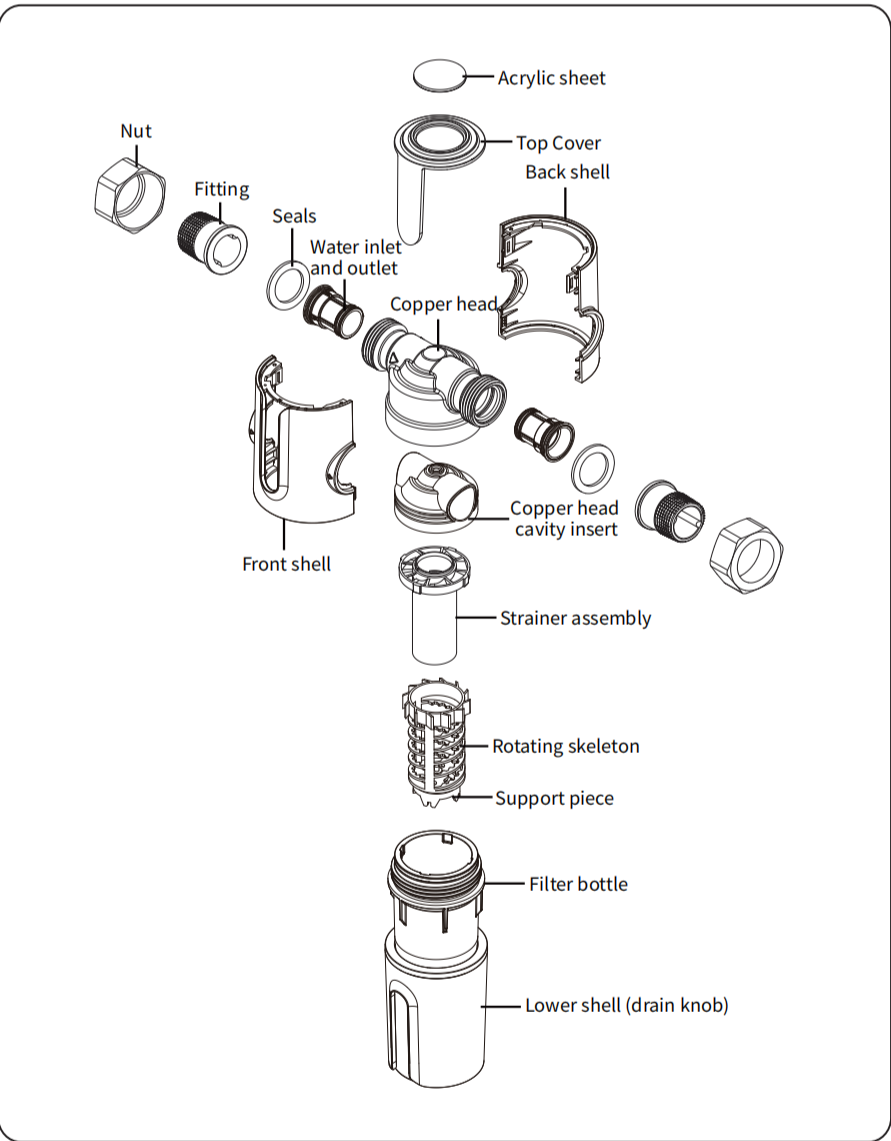
II. Product Features

- Tenth-generation cartridge technology with automatic cleaning for intercepting naked-eye objects in water;
- Patented water-driven cyclone drainage technology, which can effectively remove all kinds of impurities intercepted by the filter;
- Super large water flow, using 316L food-grade stainless steel precision mesh membrane;
- The core components are specially made of imported materials, with strong resistance to pressure, safe and reliable;
- Special explosion-proof transparent outer cover, visualization of the use effect, visualization of the drainage effect, more convenient to use;
- Food-grade inner lining isolation layer, isolation of heavy metal lead precipitation, to protect the health of water.

III. Notes

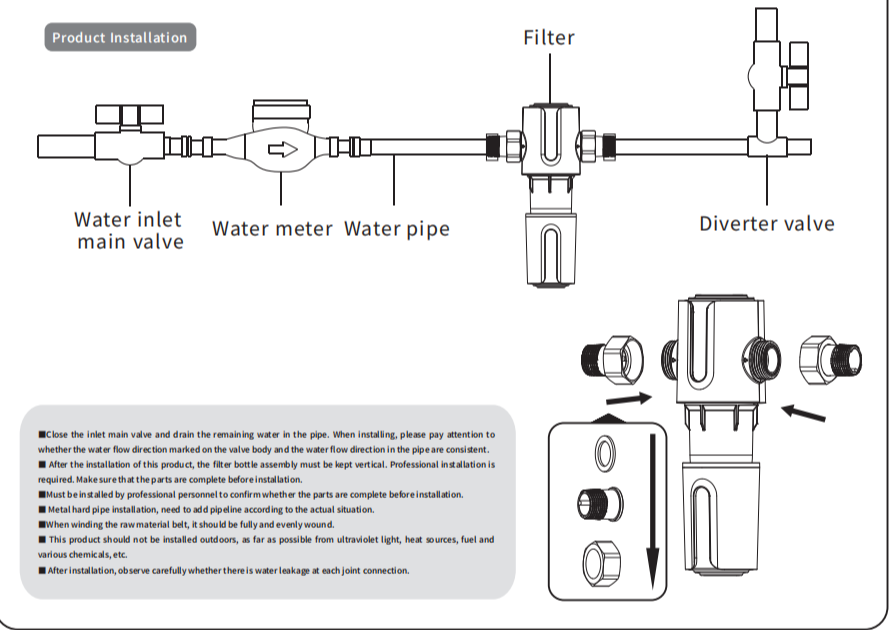
- Installation, commissioning, maintenance, must be carried out by professionals.
- This series of products should be avoiding close to heat sources and away from children.
- This series products are only suitable for 41~100.4°F municipal tap water, please do not use it for waste water and corrosive liquid.
- When installing the valve, please pay attention to whether the water flow direction marked on the valve body and the pipeline flow direction are the same.
- Do not install upstream of the water meter
- The installation location ensures a reliable drainage system.
- Depending on the water quality, the filter needs to be flushed normally at least once a month.
- During normal cleaning and maintenance, take care to protect the components.

V. Name Of Parts

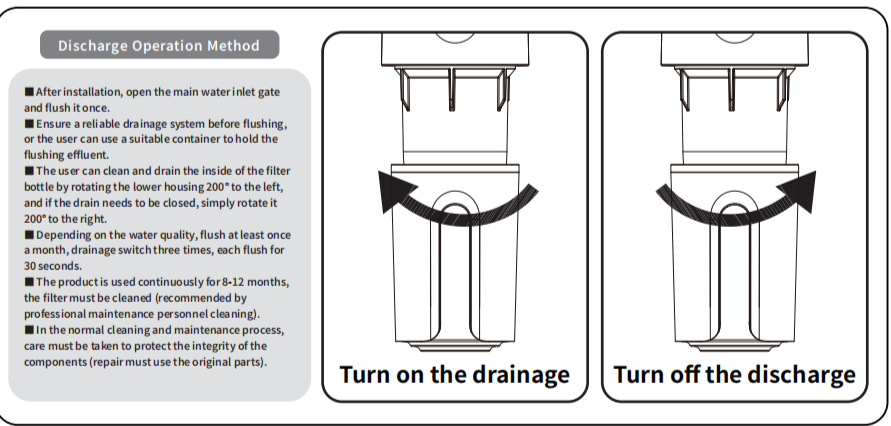


Note: If there is any difference between the product and the real one, please refer to the real one

VI. Product Installation

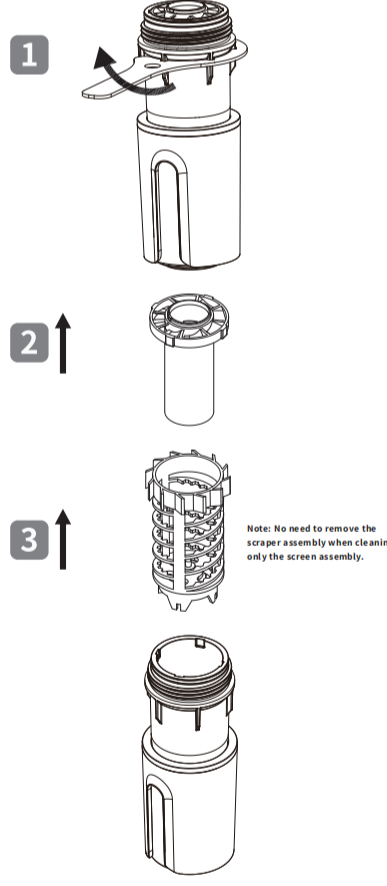


VII. Instructions For Use



Disassembly and cleaning of the filter assembly

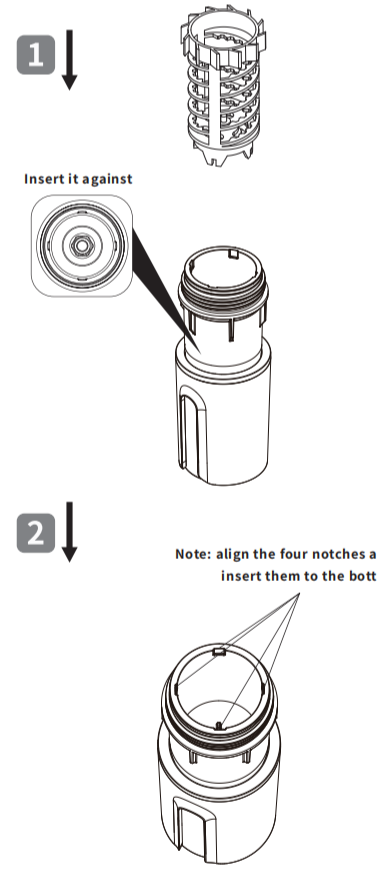
- (1)Professional disassembly and cleaning is recommended.
- (2) When normal scraping or rising cannot remove dirt from the screen and affects water usage, it is recommended that the screen assembly be disassembled and cleaned.
- (3) Unscrew the filter bottle clockwise with a wrench.
- (4) Remove the screen assembly and clean the dirt inlaid on the screen, etc.
- (5)It is not necessary to remove the scouring assembly when cleaning only the screen assembly.



Note: No need to remove the scouring assembly when cleaning only the screen assembly.

Installation of scraping and washing assembly

- (1)Professional disassembly and cleaning is recommended.
- (2)To install the scraping assembly, first put the support into the filter bottle with tweezers or by hand, so that the four concave points of the support are aligned with the four convex points at the bottom of the bottle, and then put the scraping rotating skeleton into the bottle.
- (3)When installing the screen, the four bumps on the screen assembly should be aligned with the four notches on the filter bottle.



Note: align the four notches and insert them to the bottom

VIII. Troubleshooting

Phenomenon	Possible causes	Exclusion method
No water come out	Availability of water source Is the water inlet main valve open	Waiting for water supply Open the main water inlet valve
Low water flow rate	Is the water inlet main valve completely open Partial clogging of the filter surface	Open the water inlet main valve completely Flush the screen to remove debris
Water seepage at joints	Are the filter parts fully opened Loose parts at water seepage Too little winding of raw material tape at the threaded connection Damaged rubber seal at water seepage aging	Check if the seal is misaligned or dislodged Retighten the threaded connector with a wrench Re-wrap the raw material belt and tighten the replacement rubber seal
No pressure value displayed	Damaged pressure gauge Is the water inlet main valve open	Pressure gauge replacement Open the main water inlet valve

IX. Packing list

- Pre-filter 1 PCS ■ Copper nut 2PCS ■ 3/4" connector 2PCS
- Accessory package:
 - Instruction manual 1PCS
 - Drain pipe 1PCS
 - Bottle mouth seal 1PCS
 - Joint gasket 2PCS