



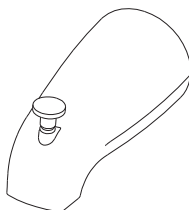
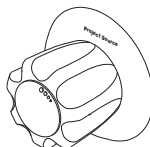
**PROJECT
SOURCE.™**

ITEM #0434265

TUB AND SHOWER FAUCET

MODEL #F201E509CP

Français / Español p. 14



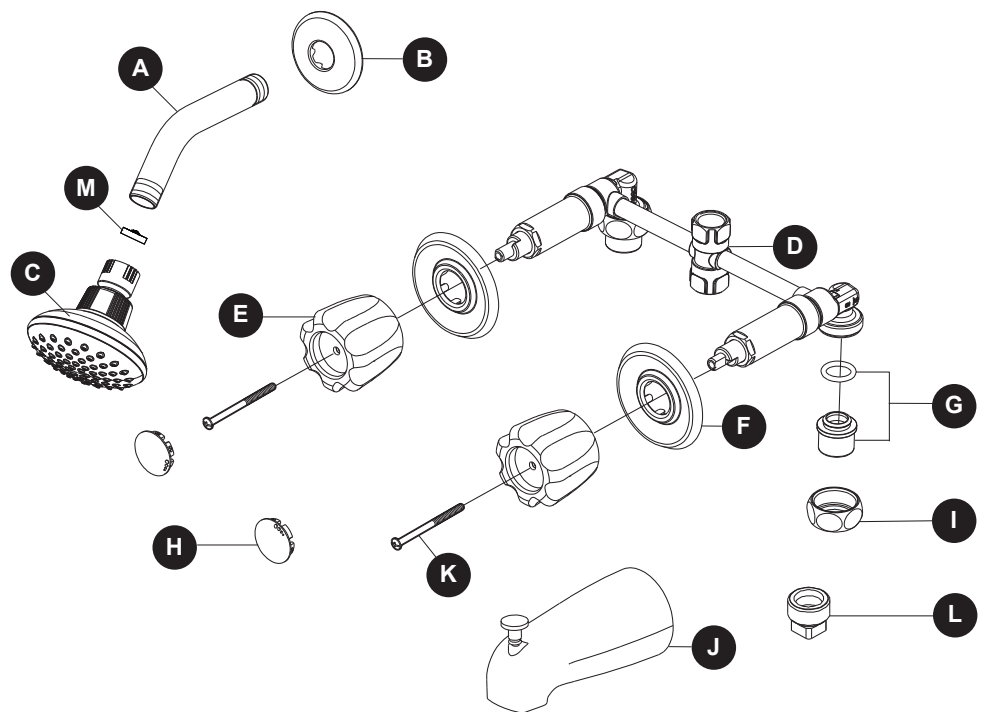
ATTACH YOUR RECEIPT HERE

Serial Number _____ **Purchase Date** _____



Questions, problems, missing parts? Before returning to your retailer, call our customer service department at 1-866-389-8827, 8 a.m. - 8 p.m., EST, Monday - Friday.

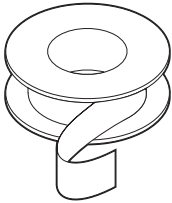
PACKAGE CONTENTS



PART	DESCRIPTION	QUANTITY
A	Shower Arm	1
B	Shower Arm Flange	1
C	Shower Head	1
D	Valve Body	1
E	Handle	2
F	Escutcheon	2
G	Supply Insert with O-ring	2
H	Handle Cap	2
I	Supply Nut	2
J	Spout	1
K	Screw (preassembled to Handle (E))	2
L	Plug	1
M	Screen washer (preassembled)	1

HARDWARE CONTENTS

AA



Thread Seal Tape
x 1

SAFETY INFORMATION

Please read and understand this entire manual before attempting to assemble, operate or install the product. If you have any questions regarding the product, please call customer service at 1-866-389-8827, 8 a.m. - 8 p.m., EST, Monday - Friday.

WARNING

- Follow these installation instructions carefully. Proper installation is the installer's responsibility.
- Check local building codes before beginning installation to ensure compliance.
- The should be installed by a licensed plumber in your state.
- This product is engineered to meet the EPA WaterSense flow requirement. The flow rate is governed by the aerator or flow controller. If replacement is ever required, be sure to replace it with a WaterSense compliant aerator or flow controller to retain the water conserving flow rate of this product.
- This product might require to be installed with an automatic temperature compensating device to reduce the risk of scalding and thermal shock. Check with the local plumbing code requirement before installation. The product should be installed by the local licensed plumber.
- The shower shall be used with automatic compensating valve rated at 1.3 gpm(4.9 L/min) or less.
- If you use soldering for the installation of the faucet, the seats cartridges and washers will have to be removed before using flame. Otherwise, warranty will be void on these parts.

CAUTION

Inlet ports are designed to allow for 1/2-inch copper tubing solder connection or 1/2-inch IPS threaded coupling connection. For threaded connections, wrap thread seal tape around threaded ends before connecting. If soldering connections, remove cartridges, seats, and springs. Connect water supply to the pipe by soldering. Reassemble cartridges, seats, and springs. Heat damage to these parts may occur and result in the warranty being void on these parts.

PREPARATION

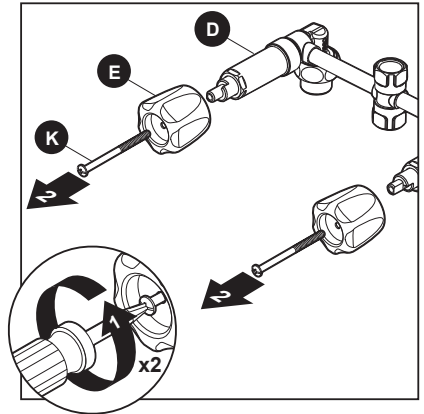
Before beginning assembly of product, make sure all parts are present. Compare parts with package contents list and hardware contents above. If any part is missing or damaged, do not attempt to assemble the product. Contact customer service for replacement parts.

Note: This guide is a general representation of the installation process. In the case of plumbing products, every installation is essentially a custom installation and some adjustments may be required for your specific application.

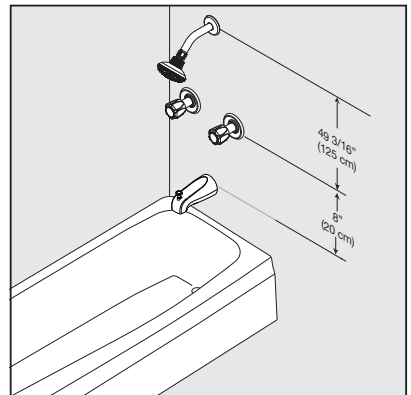
Estimated Assembly Time: 90 minutes

Tools Required for Assembly (not included): Safety Goggles, Adjustable Wrench, Thread Seal Tape, Phillips Head Screwdriver, Channel-Lock Pliers.

Before installation, remove screws (K) and handles (E) from valve body (D).



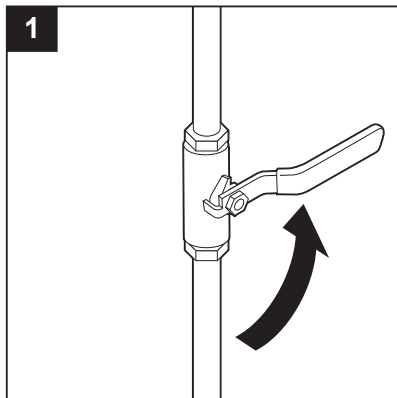
Note the suggested installation distance between shower arm (A), handle (E), and spout (J).



ASSEMBLY INSTRUCTIONS

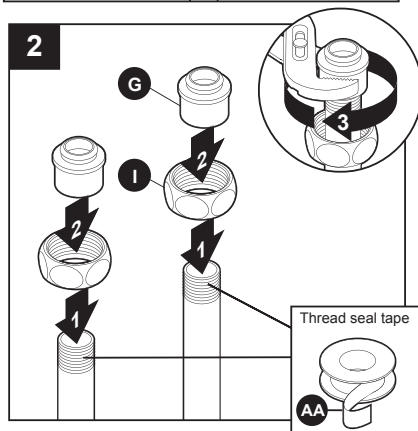
Note: Numbered arrows within steps indicate sequence of actions.

1. Shut off main water supply before installation.

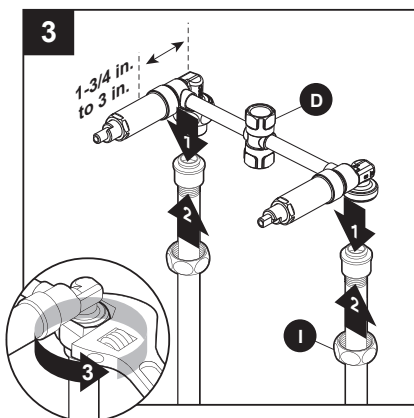


2. Remove supply nut (I) and supply insert with O-ring (G) from valve body (D). Attach supply nut (I) and supply insert with O-ring (G) onto hot and cold supply lines (not included).

Note: Use thread seal tape (AA) on all pipe threads.

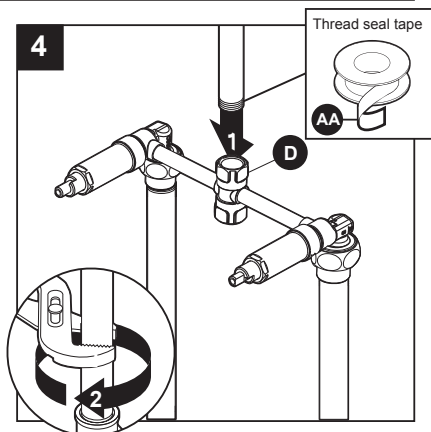


3. Attach hot and cold supplies to handle valves of the valve body (D) by tightening supply nut (I). Recommended distance from center of pipe to finished wall is 1-3/4 to 3 inches.



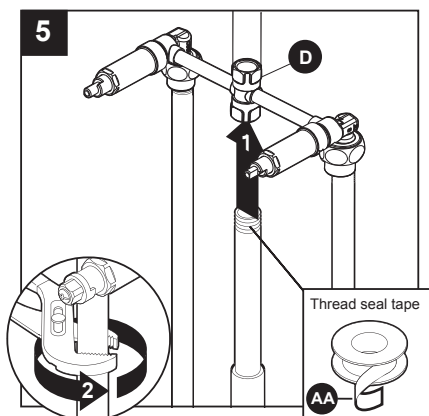
ASSEMBLY INSTRUCTIONS

4. Attach vertical shower pipe to the top of the middle elbow of valve body (D).

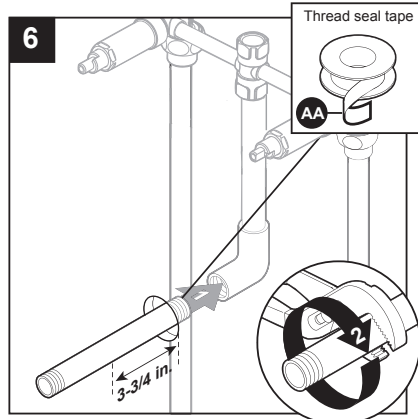


5. Attach vertical tub pipe to the bottom of the middle elbow of valve body (D).

Note: Recommend 8 in. minimum distance to spout.
For shower only installation attach plug (L) to the bottom of the middle elbow of valve body (D) using thread seal tape.

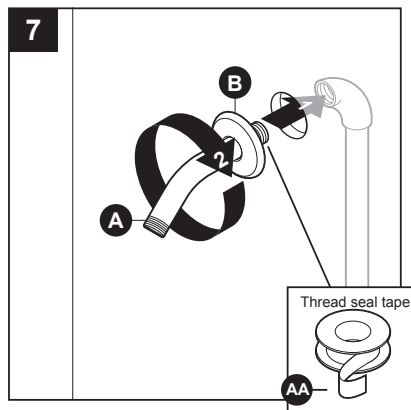


6. Install stub-out pipe (not included) for spout (J). Use proper length stub-out pipe so pipe threads will extend 3-3/4 to 4 inches beyond finished wall.

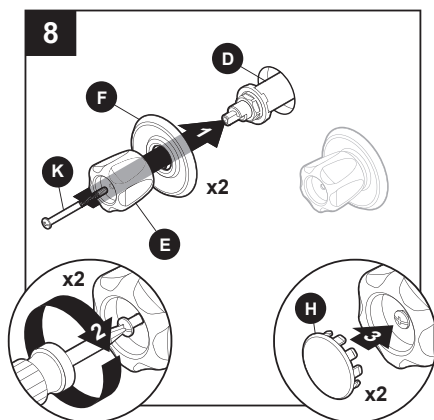


ASSEMBLY INSTRUCTIONS

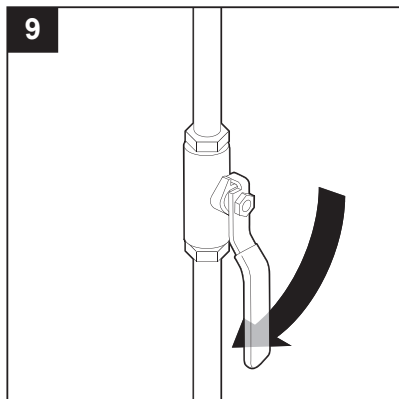
7. Install shower arm (A) and shower arm flange (B) to vertical shower pipe elbow.



8. Install escutcheons (F) and handles (E) to valve body (D). Replace screws (K) and install handle caps (H).

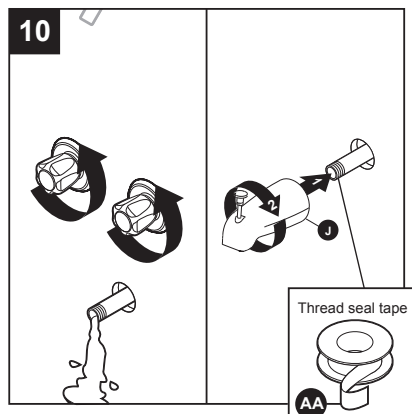


9. Turn on main water supply.

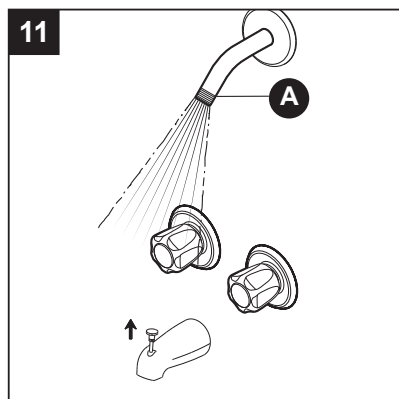


ASSEMBLY INSTRUCTIONS

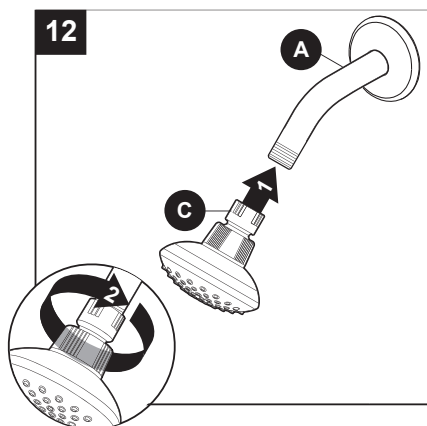
10. Check for leaks at tub stub-out pipe. Next wrap stub-out pipe with thread seal tape and install spout (J).



11. Check for leaks at shower arm (A). Next divert water to the shower to flush out the water lines.



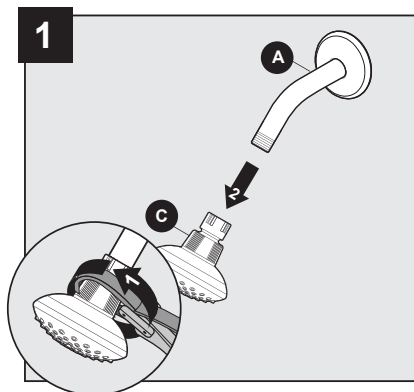
12. Install shower head (C) to shower arm (A). Hand tighten shower head.



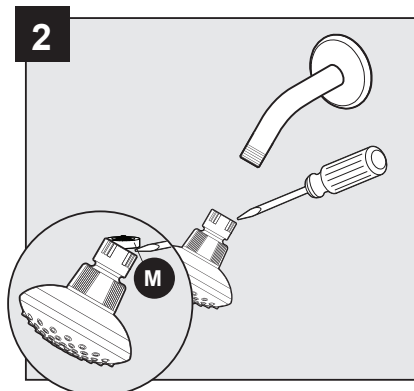
REPAIR INSTRUCTIONS

IN CASE OF LOW FLOW FROM SHOWER HEAD

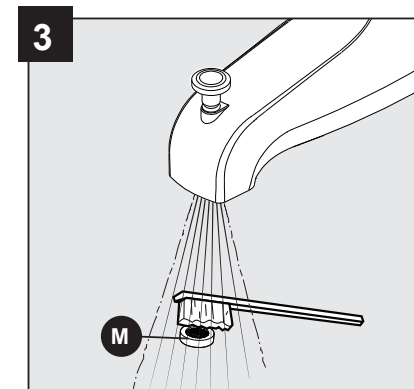
1. Use a clean strap wrench (not included) to remove the shower head (C) from shower arm (A).



2. Use a flathead screwdriver (not included) to carefully remove the screen washer (M).

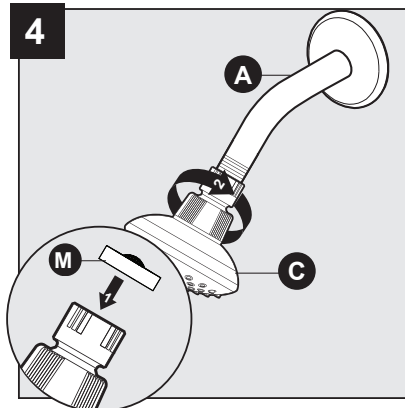


3. Gently clean the screen washer (M) with a toothbrush (not included).



REPAIR INSTRUCTIONS

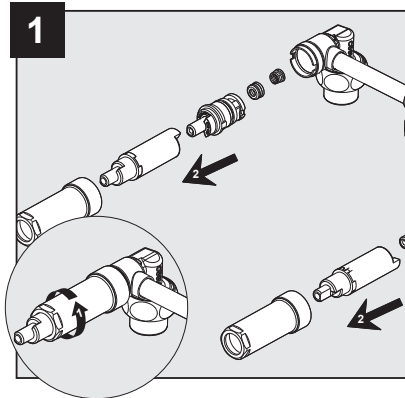
4. Reinstall the screen washer (M) and shower head (C).
Hand tighten shower head.



IN CASE OF FAUCET CONTINUALLY DRIPPING

To order a replacement shower cartridge repair kit, call our customer service department at 1-866-389-8827, 8 a.m. - 8 p.m., EST, Monday - Friday.

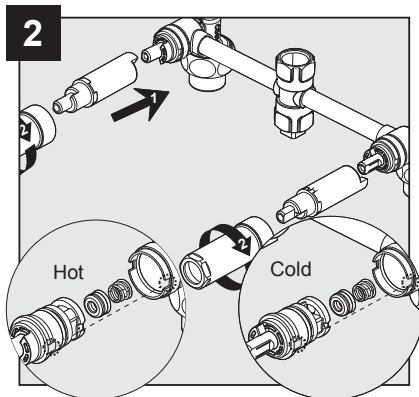
1. Locate and shut off main water supply in your house. Turn on the shower valve to drain the remaining water in the shower valve. Remove the sleeve, stem extension, cartridge, rubber seat and spring.



2. Install the replacement spring, rubber seat, cartridge, stem extension and sleeve.

Warning:

The larger end of the spring should be facing the valve body.
Insert the two cartridge lugs back to back.



OPERATION INSTRUCTIONS

NOISE AND WATER HAMMER IN PEX SYSTEMS

As with all plumbing materials under some operating conditions, water hammer can occur in PEX plumbing systems. The inherent flexibility of PEX drastically reduces the magnitude of pressure surges compared with metallic plumbing materials. Damage to plumbing components in a PEX system due to these pressure surges is highly unlikely, although noise can sometimes result. Fortunately, there are solutions to minimize or eliminate water hammer noise.

Clamping or strapping more frequently may help prevent tubing noise. It is very important that the tubing not be in contact with wallboard, forced air ducts or other high resonance articles. Insufficiently Insufficiently or improperly clamped or strapped tubing may move during fixture operation and hit against these surfaces.

Install a water hammer arrester on fixtures where noise is a problem. A water hammer arrester installed within 6 ft. of the fixture on the cold water side only will eliminate the source of the noise (the pressure wave). It should be noted that even with an arrester, tubing that is clamped or strapped insufficiently may still hit against something as it moves slightly when the water flow is stopped.

Avoid operating fixtures in such a way that causes near instantaneous shut off. Simply closing fixtures in a less abrupt manner can eliminate hammer noise.

CARE AND MAINTENANCE

- To protect and maintain the finish, clean only with a soft, damp cloth.
- Do not use a detergent or cleanser that may harm the finish.

TROUBLESHOOTING

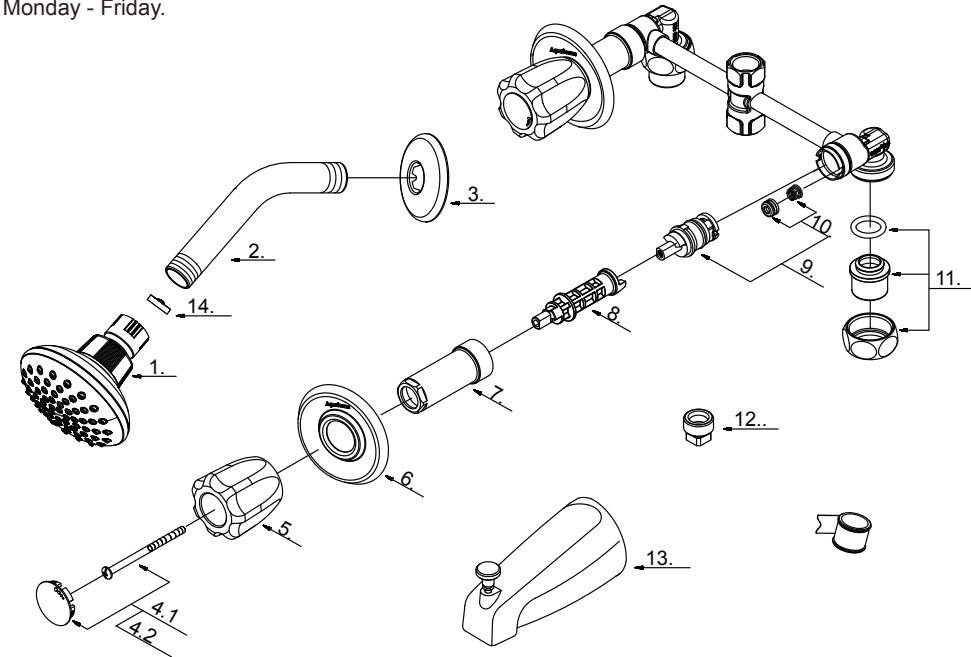
PROBLEM	POSSIBLE CAUSE	CORRECTIVE ACTION
Leak from under handle.	Retainer nut has come loose. O-ring on cartridge is dirty or damaged.	Tighten the retainer nut. Clean or replace O-ring.
Water will not shut off completely.	Rubber valve seat is dirty or broken.	Remove handle and cartridge to check rubber valve seat. Clean or replace it.

WARRANTY

The manufacturer warrants this faucet to be free from defects in workmanship and material present at time of shipment from the factory for a limited lifetime from the date of purchase. This warranty applies only to the original purchaser. The manufacturer agrees to correct such defects at no charge or, at our option, replace the faucet with a comparable or superior model. To obtain warranty service, call our customer service department at 1-866-389-8827 for return authorization and shipping instructions. You may be required to present a copy of your sales receipt as proof of purchase. All cost of removal and reinstallation are the expressed responsibility of the purchaser. Any damage to the faucet by accident, misuse or improper installation, or by affixing accessories not produced by the manufacturer, are the purchaser's responsibility. The manufacturer assumes no responsibility whatsoever for faucet installation during the warranty period. There is no further expressed warranty. The manufacturer disclaims any and all implied warranties. The manufacturer shall not be liable for incidental, consequential or special damages arising at or in connection with product use or performance except as may otherwise be accorded by law. This warranty gives you specific legal rights, and you may also have other rights which vary from state to state. This warranty supersedes all prior warranties.

REPLACEMENT PARTS LIST

For replacement parts, call our customer service department at 1-866-389-8827, 8 a.m. - 8 p.m., EST, Monday - Friday.



PART	DESCRIPTION	PART #
1	Shower Head (0434265)	S1213G08
2	Shower Arm	A020002
3	Shower Arm Flange	A019001-S
4.1	Index Button - Cold	A66D769C
4.2	Index Button - Hot	A66D769H
5	Acrylic Handle	A029001
6	Escutcheon	A111001-51-S
7	Sleeve	A216106
8	Stem Extension-Hot	A110036H
9	Cartridge Assembly	A66D636N
10	Seat & Spring Set	A663002
11	Union Nut	A603668
12	Plug	A028004
13	Spout W / Diverter (Threaded)	A100012
14	Screen washer	A010199