



Product Submittal	
Name	
Date	
Architect/Owner	
Contractor	
Tag	
Notes	

Sweat Angle Stop Extension Tube Specification Sheet

Description

Used to control and shut off water flow to fixtures or appliances for maintenance and repair. Featuring a 1/2 in. nominal sweat inlet connection makes for quick installation and quarter-turn, full-port brass ball valve makes for easy operation.

Features And Benefits

- Sleek chrome finish for an attractive appearance.
- Quarter-turn full-port brass ball valve.
- Compatible with copper pipe

Specification Data

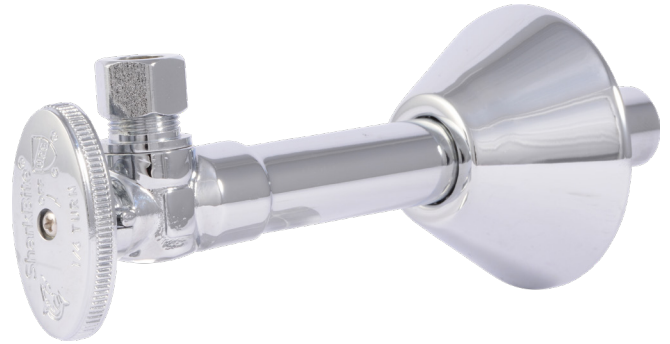
Materials	
Valve body	DZR LF brass
Knurled Handle	Zinc
Valve ball	DZR LF brass
Seat	PTFE

Temperature Performance

- Minimum working temperature 33°F
- Maximum working temperature 160°F
- Maximum working pressure is 125 psi

Flow Rate

- 3/8" Compression 4.0 GPM at 20 psi

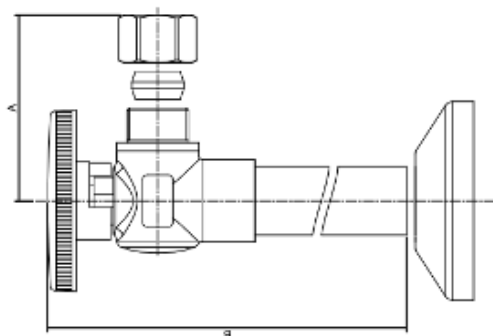


Part Listing

- ☐ NSWTAEXT1238Z 1/2 in. Nominal Sweat x 3/8 in. OD Compression, 5 in. Extension Tube with Escutcheon

Dimensions

Part Number	DIM A (IN)	DIM B (IN)
NSWTAEXT1238Z	1.14	6.40



Codes and Listing

cUPC
 ASME A112.18.1
 CSA B125.1
 NSF/ANSI/CAN 61
 NSF/ANSI 372

