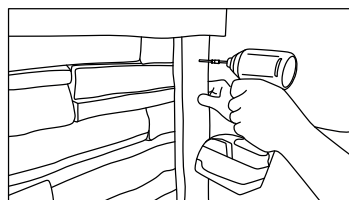
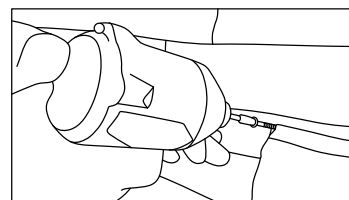
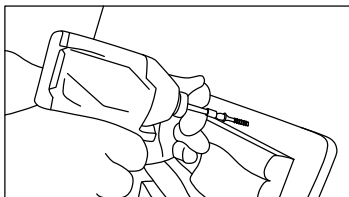
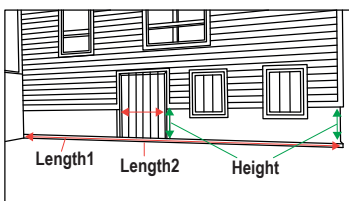
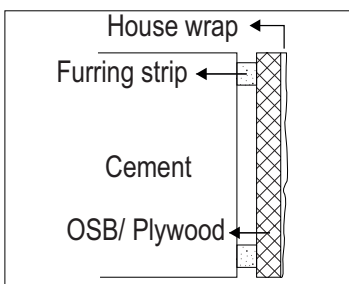
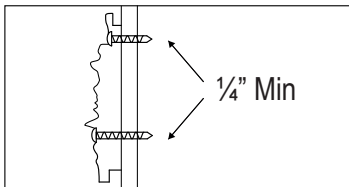
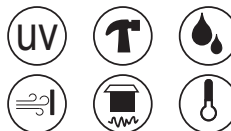


Faux Stone Panels Light Weight & No Mortar

Resistant to:



1. TOOLS REQUIRED

- Power screw driver
- Chalk line
- Level
- Saw w/ wood cutting blade
- Gloves
- Eye protection
- Exterior deck screws: 1 1/2" for shiplaps, 2" for panel face and 3" for sills/trims. (1/4" penetration Min)

2. SUBSTRATE REQUIREMENT

DuraKwik Stone panels require a minimum of 1/2" Plywood or OSB board for all installations. The wood surface needs to be covered with a minimum of one layer of water resistant barriers such as House wraps.

For cement and steel structure surfaces, it's recommended that to install 1/2" OSB or plywood board as a backer board.

*In some cases where desired, panels can also be installed over the cement surface directly with the use of tapcon concrete screws.

3. DETERMINE THE AMOUNT OF MATERIALS NEEDED

To determine the number of panels needed, measure length and height of your wall. Calculate the wall area (Length 1 X Height). Subtract the areas of uncovered sections such as door openings (Length 2 X Height). Divide the area by 4ft², then add 5% additional material to allow for overuse.

To determine the number of outside corners needed, measure the height of the corner in inches (Height). Divide the height by 12inches, then add 5% additional material to allow for overuse.

To determine the number of sills or trims need. Measure the length where sills or trims are to be installed. Divide the length by 48 inches, then add 5% additional material to allow for overuse.

4. INSTALLING PANELS

Always start from the lower left corner of the wall. Complete the first row and then work upward.

- Measure 14" off the ground, this should leave the panel about 1" off the ground. (1st row only)
- Pop a chalk line along the top edge (1st row only)
- Line up the panel to the chalk line (1st row only)
- Place 3-4 1 1/2" screws into the panel top shiplap approximately 16" apart. Sink screws 1/8" into the surface.
- Place 2-3 1 1/2" screws into the panel side shiplap approximately 6" apart.
- From one to two inches from the panel bottom edge, follow the grout line, insert 2-3 2" screws into panel face.
- From one to two inches from the left edge of the panel, insert 2-3 2" screws into panel face.
- Slide in the next panel in until the shiplaps are joined. Make sure to use a different numbered panel and repeat the process
- Make sure to come back and fill the screw holes with color matching caulk and touchup paint

5. INSTALLING TRIMS:

Trims are to be used to around the doors/windows or to terminate the sections of DuraKwik Stone panels to give it a more elegant finish. Trims should be installed prior to the panels.

- Cut out the length of the trim piece needed
- Place 3" screws inside of the trim to the substrate
- Place screws throughout the trim approximately 16" apart
- Make sure to come back to fill the screw holes with color matching caulk and touchup paint.

6. INSTALLING SILLS

Sills are used as a transition between DuraKwik Panels and other siding materials above. They can be installed seamlessly with drip cap to allow water run off.

- Apply polyurethane adhesive evenly on the top of the substrate.
- Press the sill against the substrate and panel, hold firmly for 30secs to let the adhesive set.
- Toe screw the sill into the substrate by placing 3" screws approximately 16" apart.
- Use caulking to seal gaps between sills and fill in the screw holes.
- Apply touchup paint.

7. INSTALLING OUTSIDE CORNERS:

Corners are to provide a more natural finish to the outside corner. When installing, make sure to stagger the left and right corners to avoid gap lines.

- Fit corner over the panel shiplap
- Line up with the chalk line
- Place 1 1/2" screws into the corner shiplap approximately 8" apart.
- Sink screws 1/8" into the surface for best result.
- Place 2-3 2" screws into the corner face where you feel any flex.
- Face screws should be inserted into the grout line to best hide the screw heads.
- Corners should always be staggered with right and left corners.

8. APPLYING TOUCHUP PAINT / COLOR MATCHED CAULKING

Touchup paints are available for all DuraKwik Stone products. They are meant to match the base color of the pieces rather than the highlights. Hence, we always suggest when inserting the screws, place them inside the grout line of the panel. All exposed cut faces should be painted with touchup paint.

- Smooth out the end with finger tip
- Allow caulking to dry
- Apply touch up paint
- Fill the screw holes with color matched caulking
- Apply color matched caulking to all joints*(Optional)

*To avoid gaps caused by house movement and natural expansion and contraction of product

9. INSTALLING DIRECTLY ONTO CEMENT

In some cases where it's more desirable to install panels directly over the cement surface. You can do so with tapcon concrete screws.

- First, apply adhesive to the back of the panel
- Hammer drill the pilot hole at where you desire to insert screws
- Insert tapcon concrete screws with washer into the shiplaps
- Insert tapcon concrete screws into the panel surface.
- Make sure to come back and fill in the screws holes with the color match caulking and touchup paint.

*Durakwik Stone products are not fire rated. They need to be kept away from any open flame or constant heat source of higher than 200F for at least 24 inches.

