

Commercial Retrofit Downlight





Benefits

- High efficacy of 90lm/W
- Aluminum reflector & trim
- Mounts into existing recessed frame
- Easy disconnect for easy installation
- Wireless lighting control ready (ZigBee®)
- Enabled Smart Multi Sensor
- Lumen maintenance of L85 at 50,000 hours

Applications

- Office / School / Retail

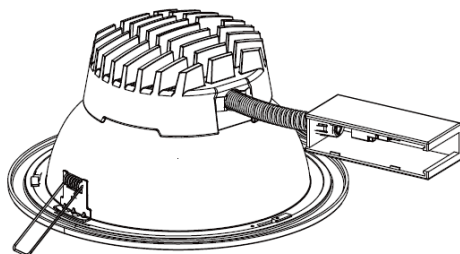
Data Sheet

Category	Unit	Specification	
Product type		6"	8"
Input power	W	16	22
Luminous flux	lm	1450	2000
Efficacy	lm/W	90	
CCT	K	3500 / 4000	
Beam angle	°	80	
CRI	-	80	
Life span	hrs	50000@L85	
Operating Temp.	°F(°C)	-4 ~ +104 (-20 ~ +40)	
Input voltage	Vac	120 ~ 277	
Weight	lb(kg)	1.87 (0.85)	2.02 (0.92)
Dimension	Inch (mm)	Ø7.1x4.0 (Ø180x101)	Ø8.7x4.4 (Ø222x111)
Dimmable	-	0-10V (ZigBee ready)	
Certificate	-	 	

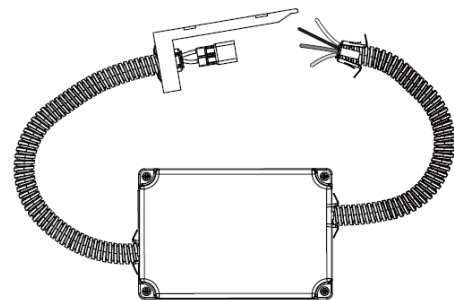
NOTE! All technical specifications are given as guidance only. Final specification may differ from actual product.

Commercial Retrofit Downlight_ Installation Manual

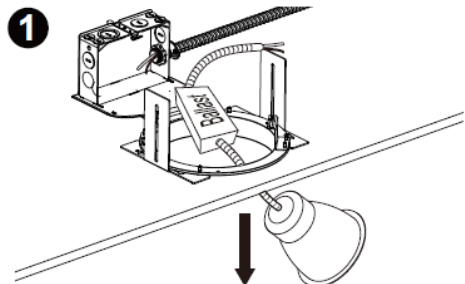
Installation



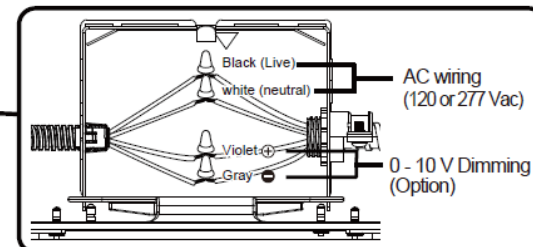
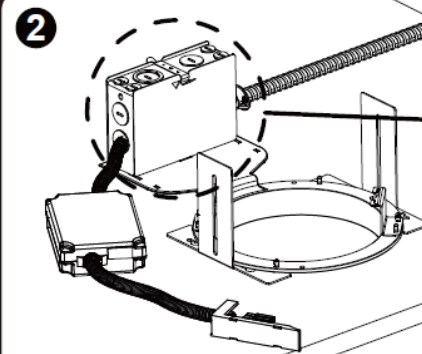
LED Fixture Assembly



Driver Assmembly

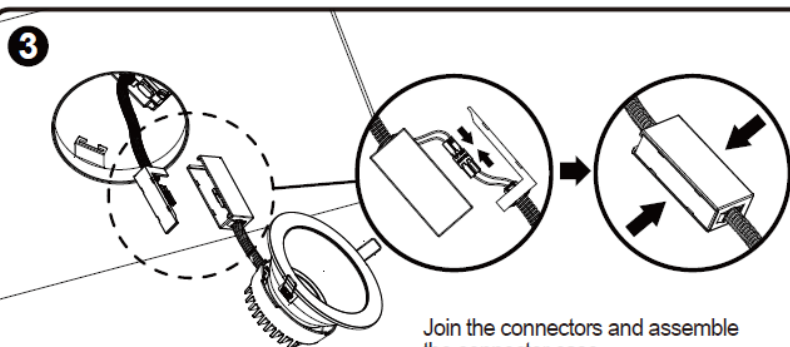


Remove existing components(lamps, ballast, reflector, etc..) and disconnect AC supply wires.

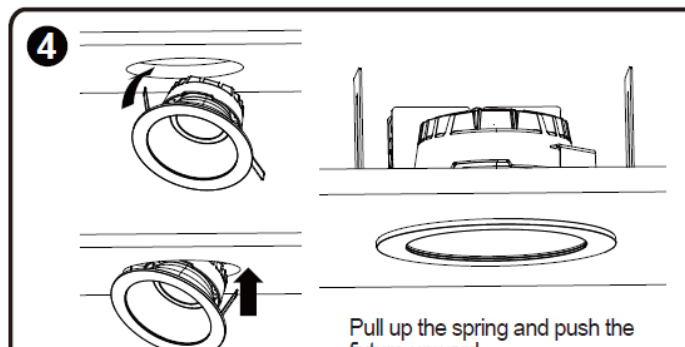


Connect wires as shown in wiring diagram.

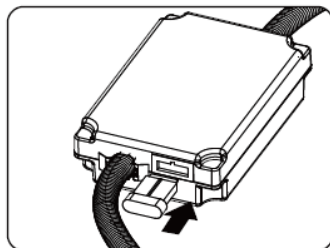
※ To dim the lamps, a compatible dimmer should be used.
Compatible dimmer : NTSTV, DVTV, NTFTV (Lutron)
45167(SYLVANIA)



Join the connectors and assemble the connector case.



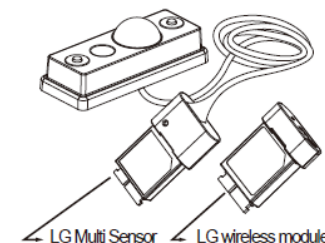
Pull up the spring and push the fixture upward.



Wireless Dimming (Optional)

(Only for wireless ready) Remove the dongle cover on the driver then insert the LG wireless module or module connected to LG Multi Sensor. LG LED Downlight is compatible with the Daintree ControlScope™ system.

- ※ When using wireless dimming function, 0-10V dimming will not be served.
- ※ 0-10V dimming should be removed.

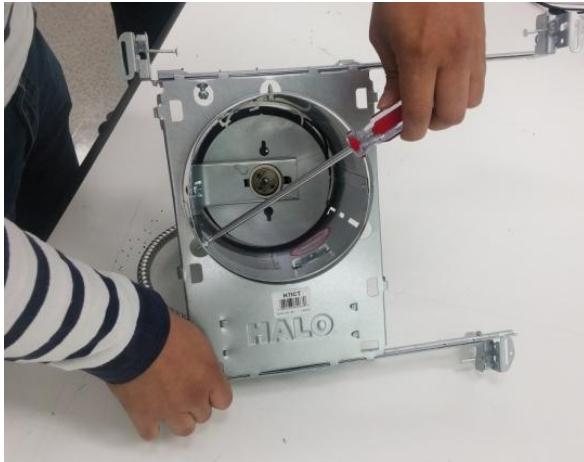


Commercial Retrofit Downlight_ Installation Manual

※ In case the existent housing has a can.



Feature of an existent housing with a can



1. Unfasten screws attaching a can to housing



2. Separate a can including conduit from housing



3. Install LG Commercial Retrofit Downlight referring to the installation manual