

The Original
smarTrike®



www.smarTrike.com

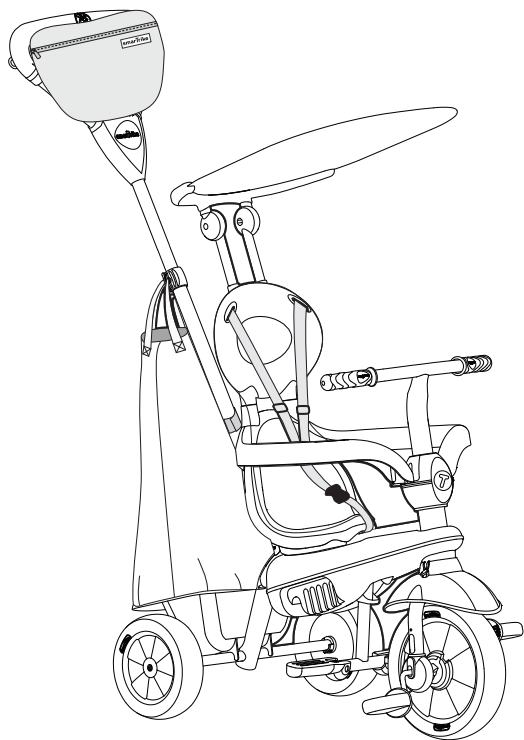
www.youtube.com/user/SmartTrikeOfficial

Thank you for buying smarTrike®

If you have any assembly questions,
please contact us for assistance
or store returns.

www.smartrike.com/support

USA: 1-855-SMTRIKE
(1-855-768-7453)



Watch a live assembly !
Scan this code to view
a step-by-step visual guide, and
assemble your product with ease.

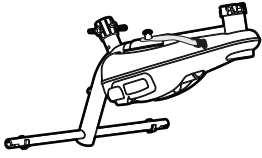
<https://assembly.smartrike.com/Vanilla-plus-tricycle-assembly>



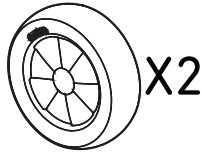
6654A

Vanilla Plus™ 665

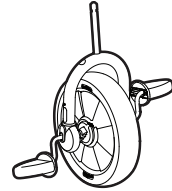
1



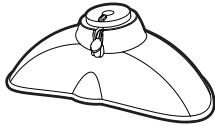
A



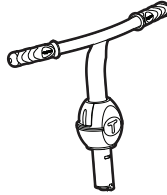
B



C



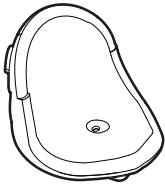
D



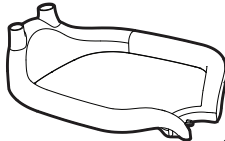
E



F



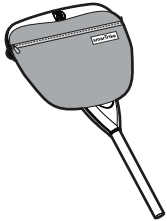
G



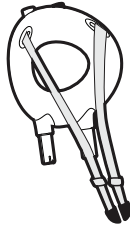
H



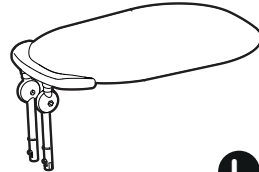
I



J



K



L



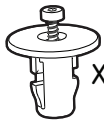
Q

2



x4

M



x2

N



O

Spare part

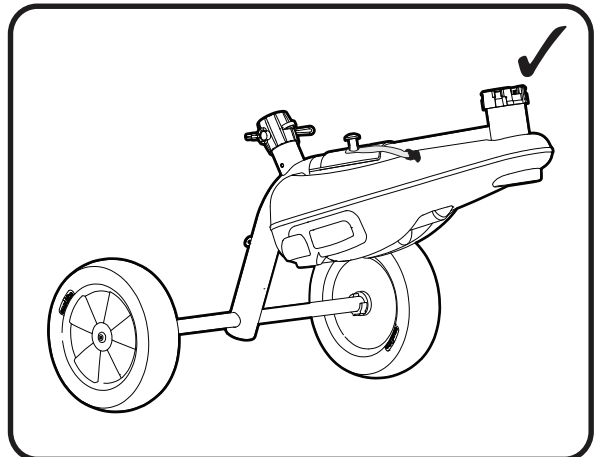
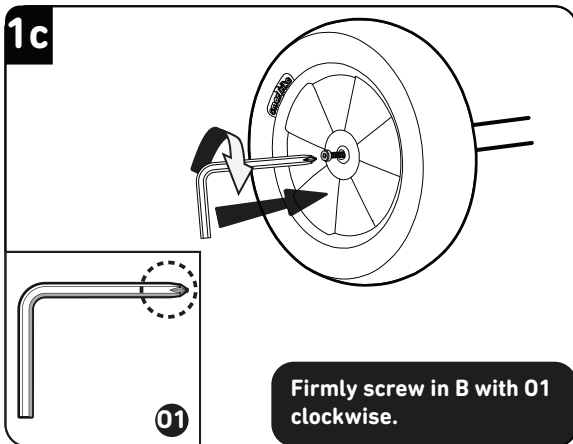
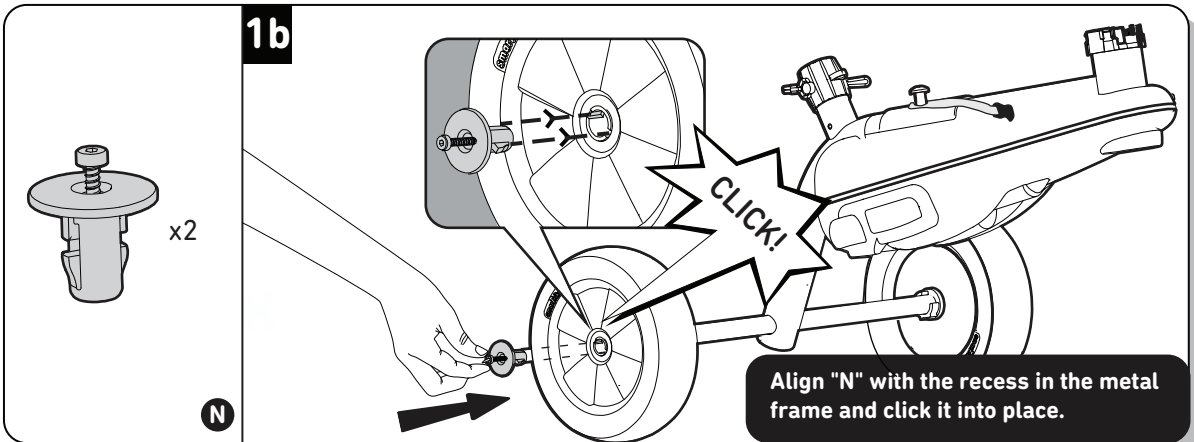
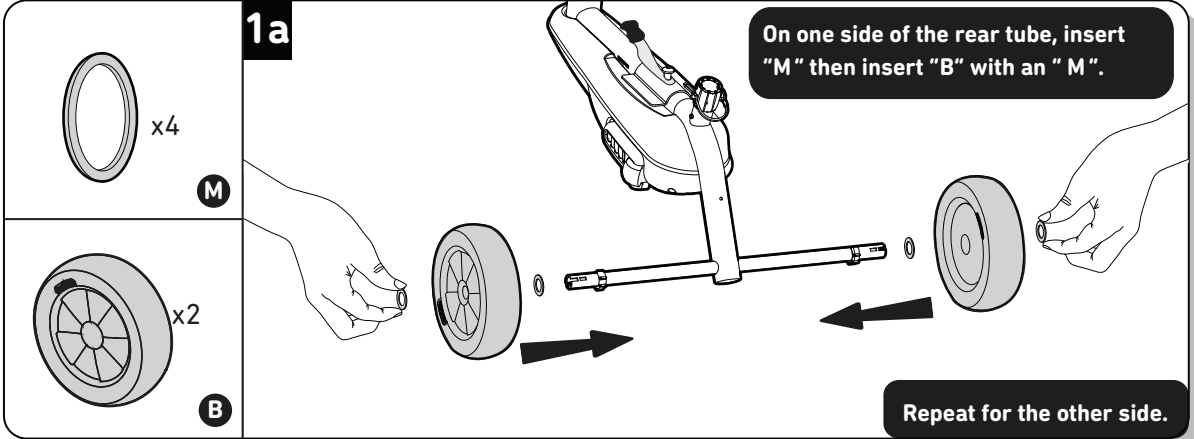
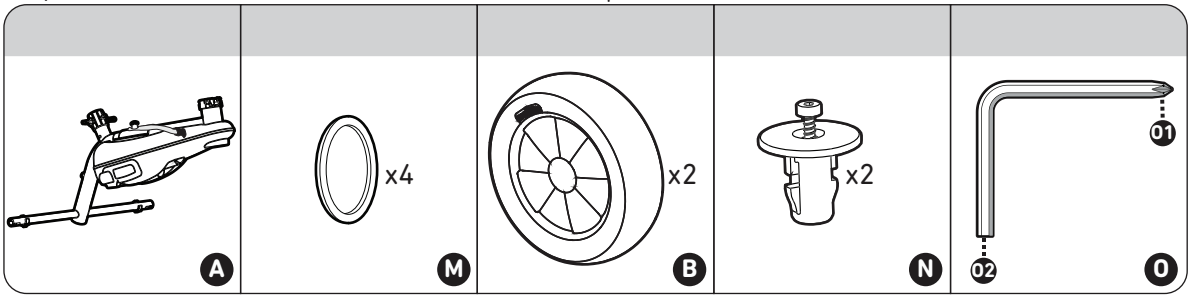


P

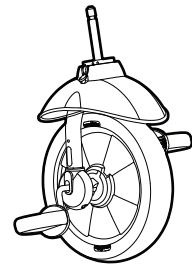
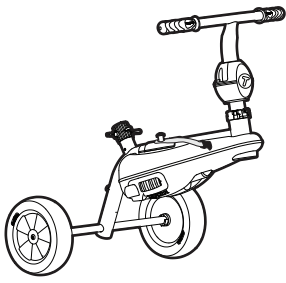
For a step-by-step visual assembly guide, scan the code on the front cover

Step 1

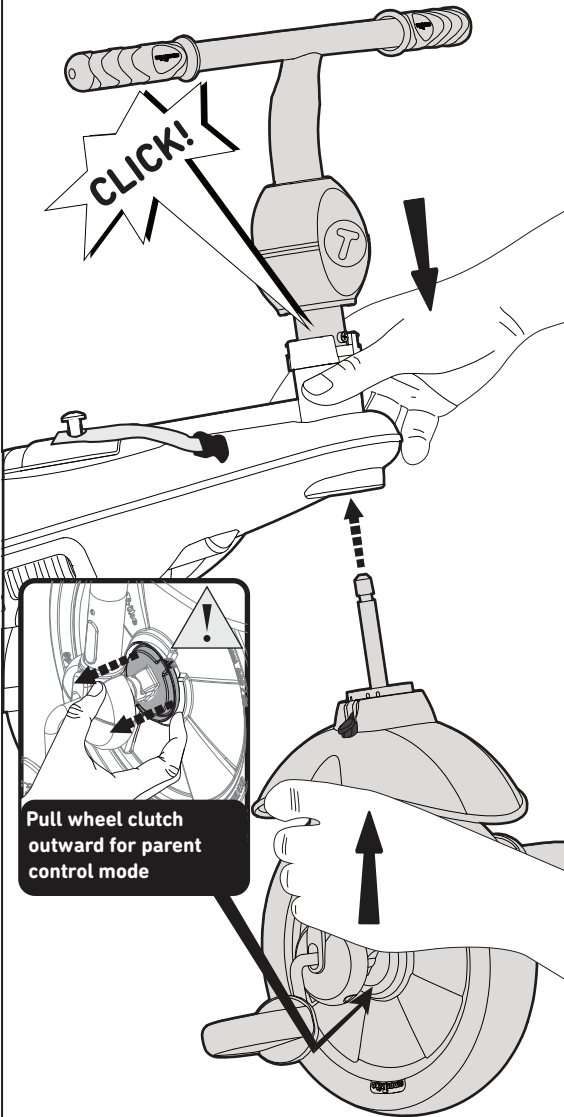
Parts needed to complete this section



For a step-by-step visual assembly guide, scan the code on the front cover



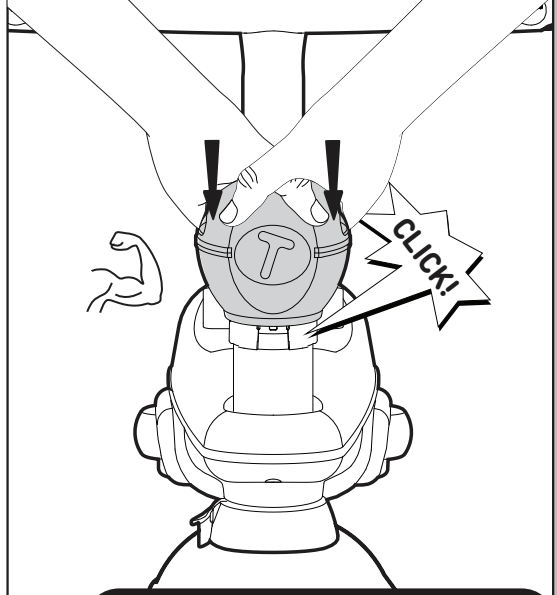
3a



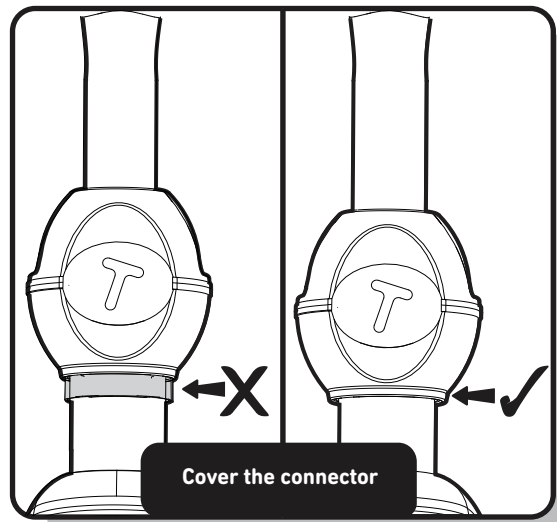
Pull wheel clutch outward for parent control mode

Insert wheel in trike's body when red button on right side of the trike.

3b

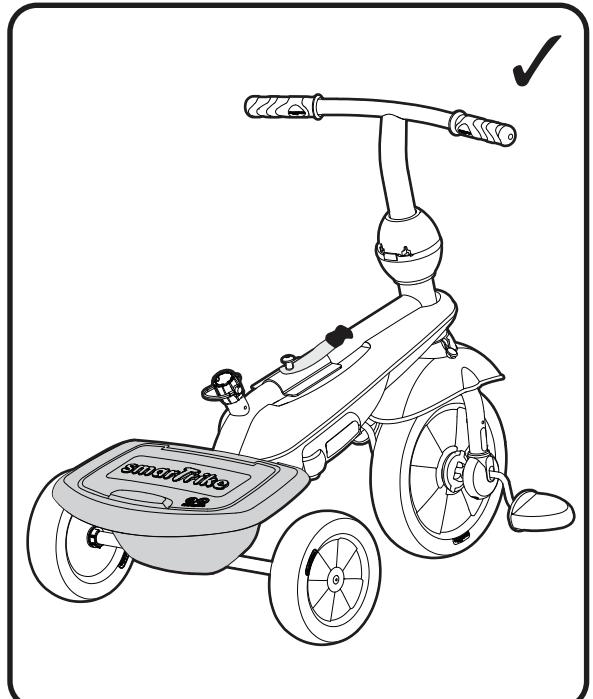
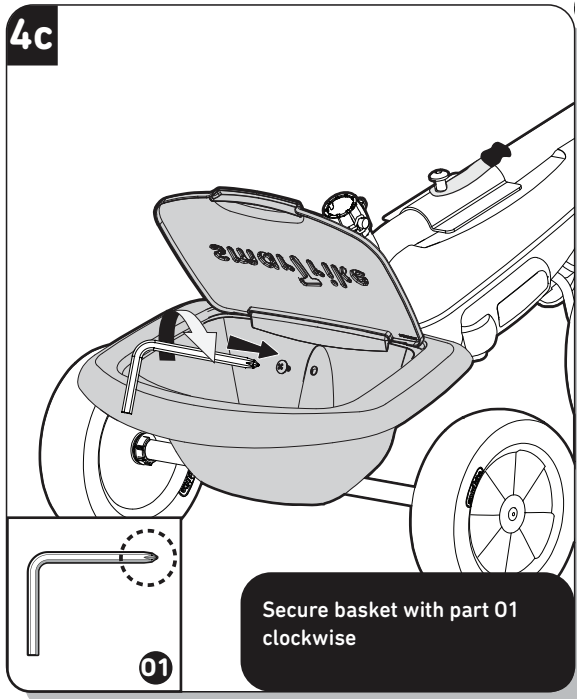
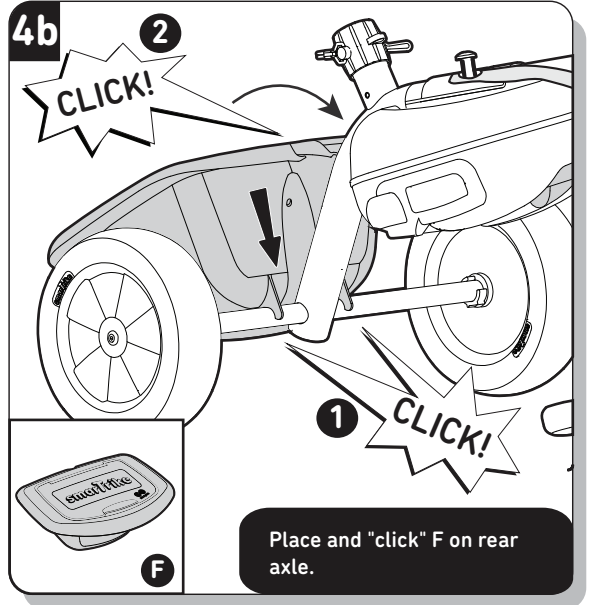
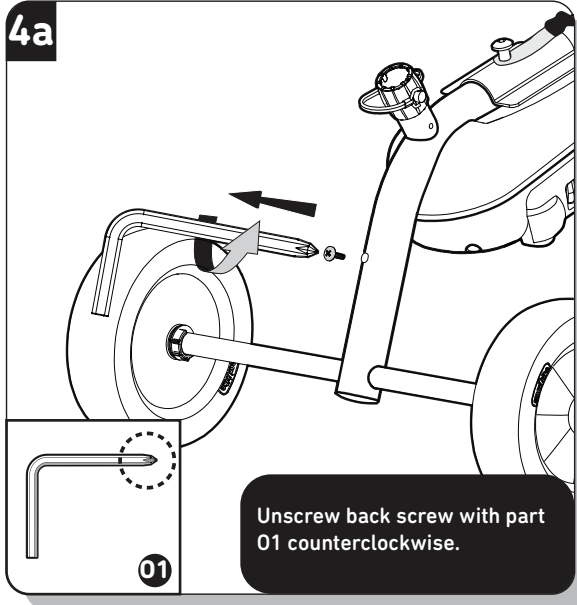
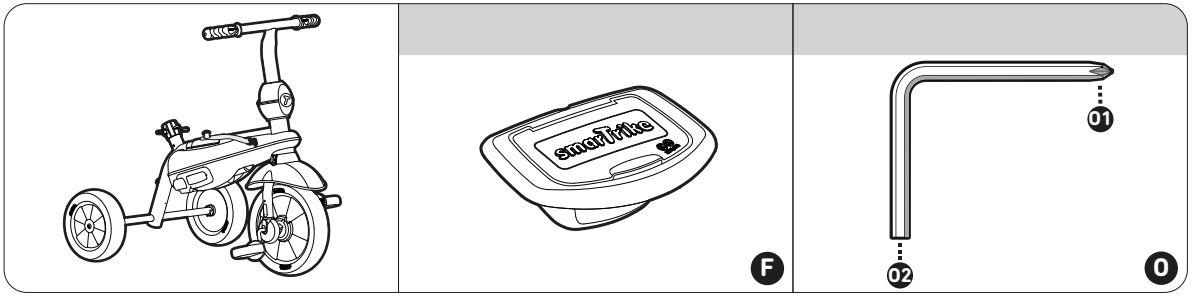


Face apple towards you. Push apple till "click" sounds.

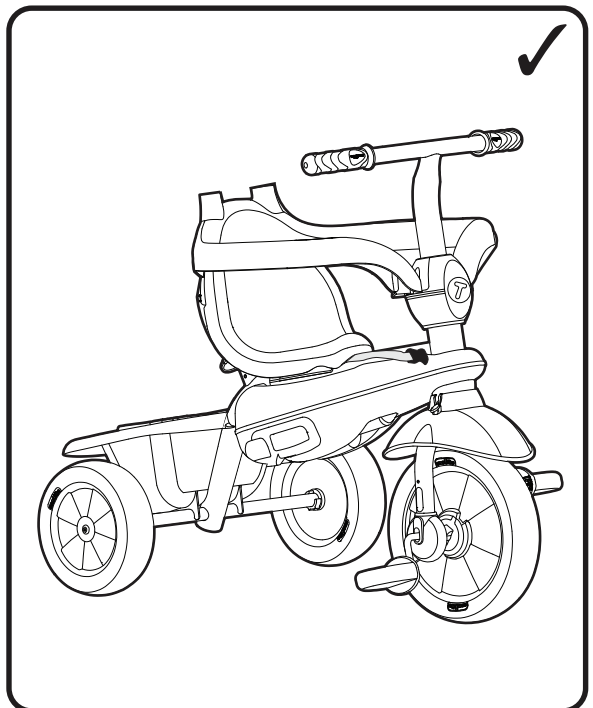
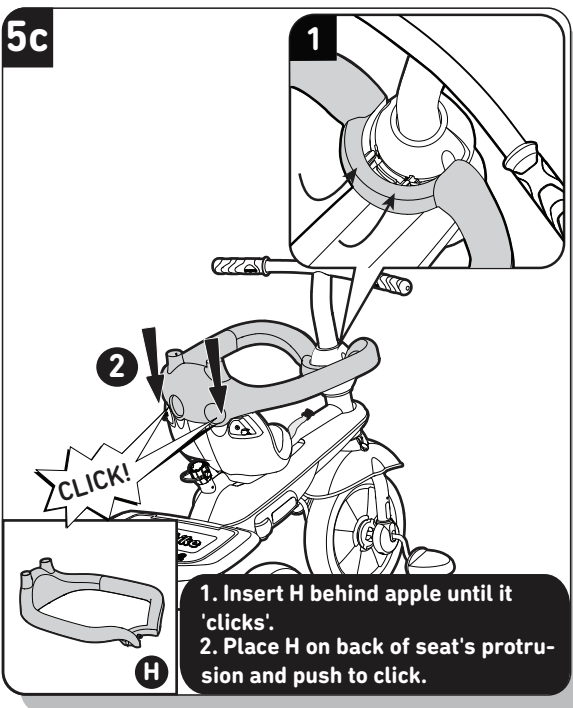
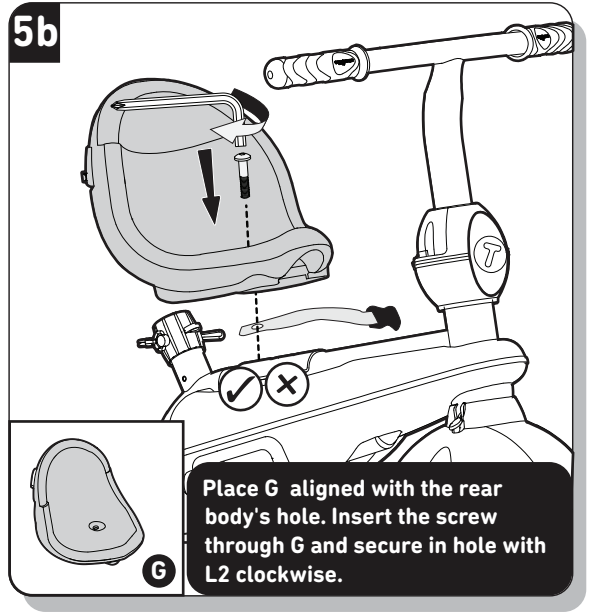
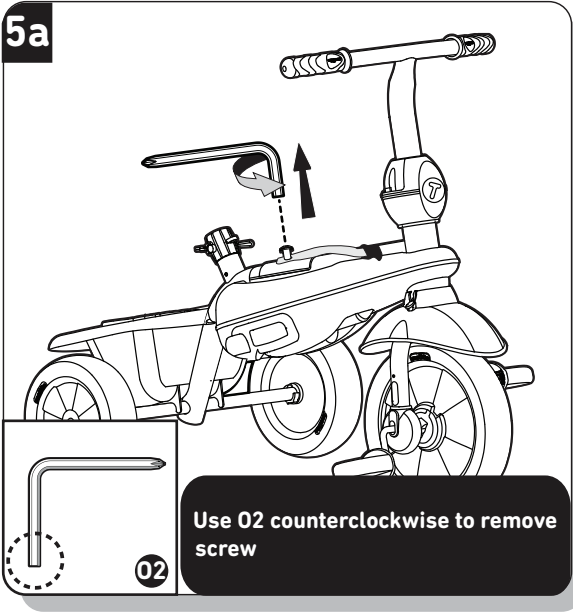
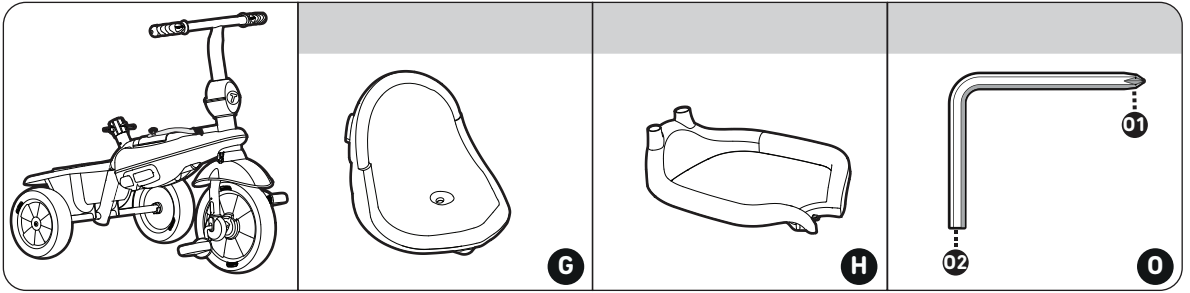


Cover the connector

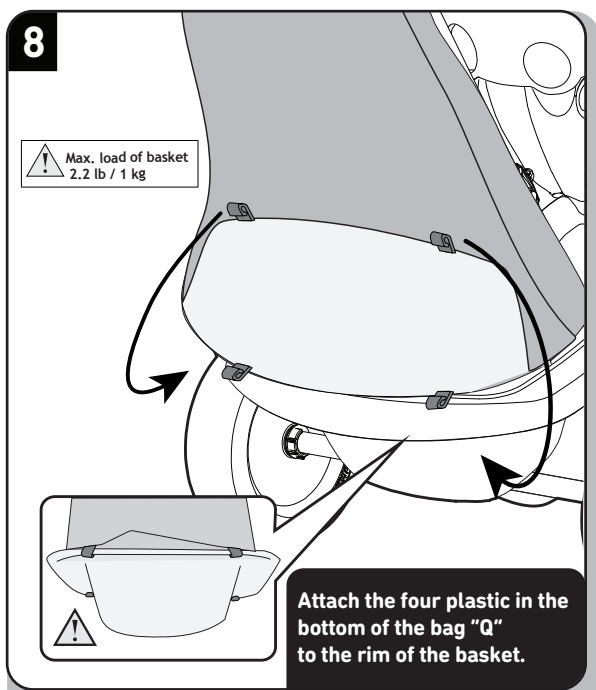
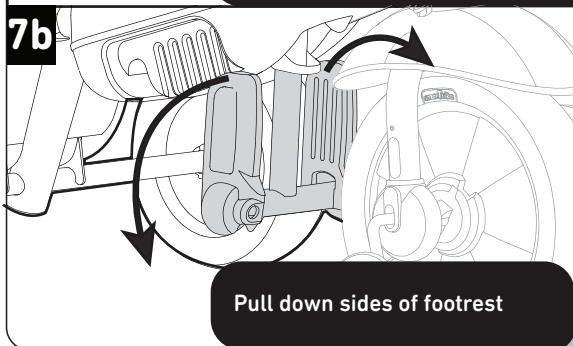
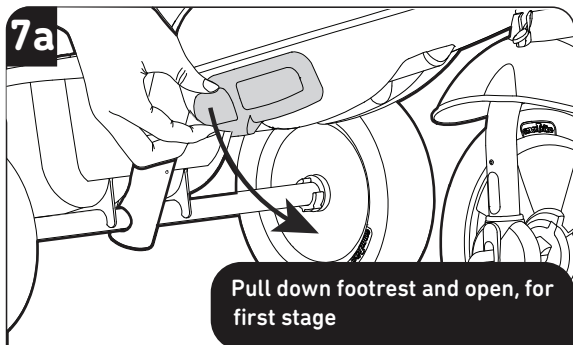
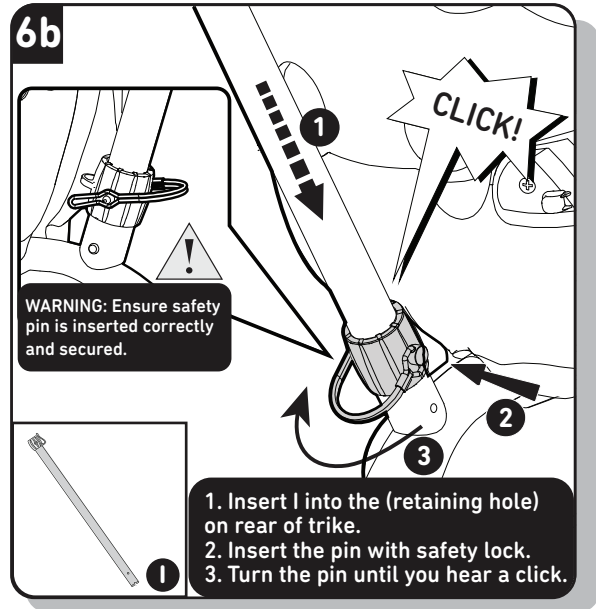
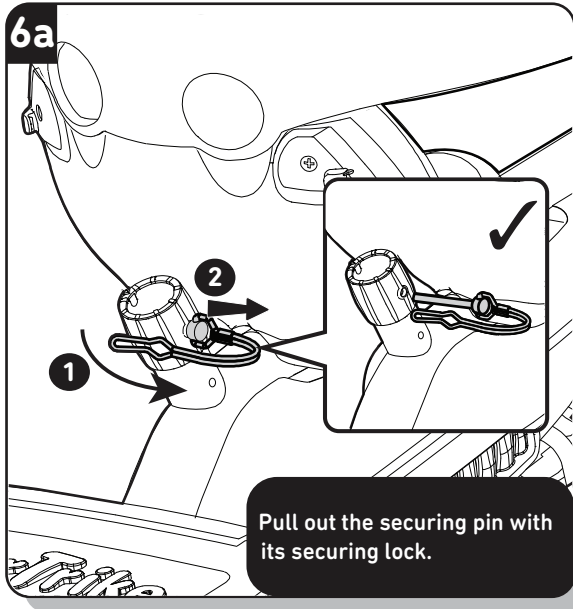
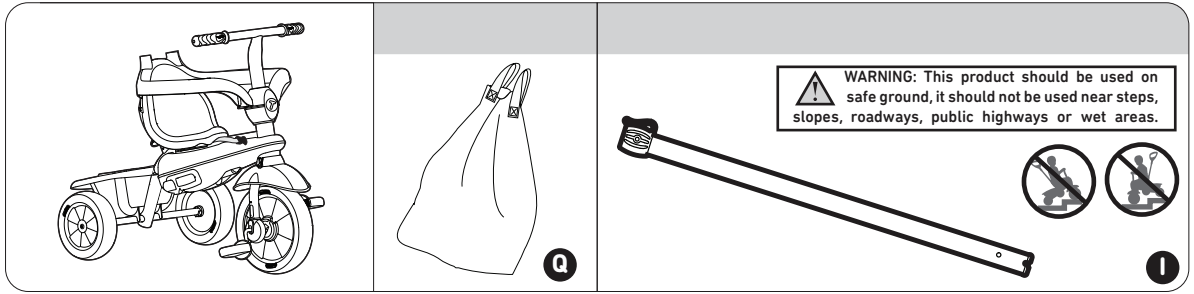
For a step-by-step visual assembly guide, scan the code on the front cover



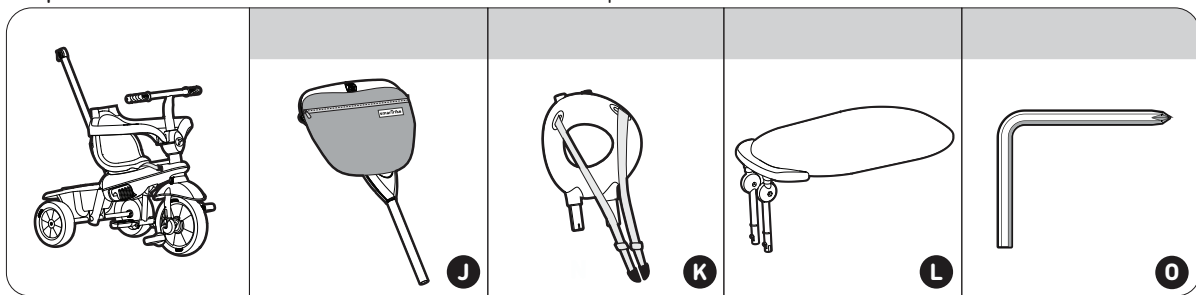
For a step-by-step visual assembly guide, scan the code on the front cover



For a step-by-step visual assembly guide, scan the code on the front cover



For a step-by-step visual assembly guide, scan the code on the front cover



9a

WARNING: Nut must be inserted correctly and secured.

Keep the nut in place, remove the screw from part I by turning counter clockwise.

9b

1

2

Insert part J into part I. Align the hole of part I with the correct hole in part J. Use Phillips screwdriver (O) to attach the screw to the nut.

9c

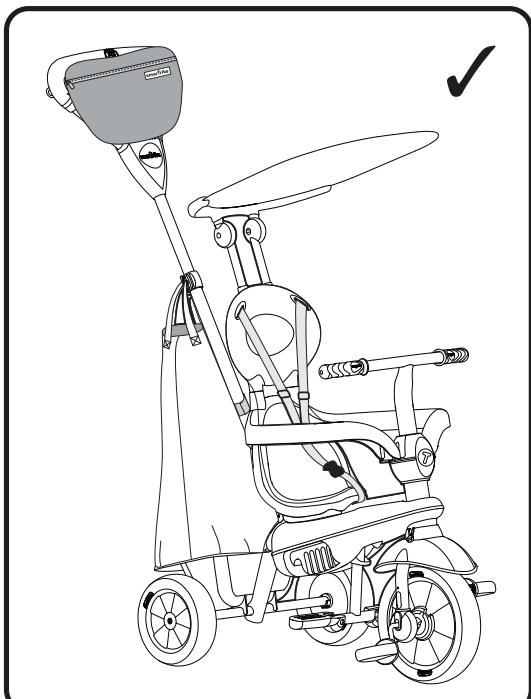
CLICK!

Insert part O2 into the safetybar, until you hear a "click".

10

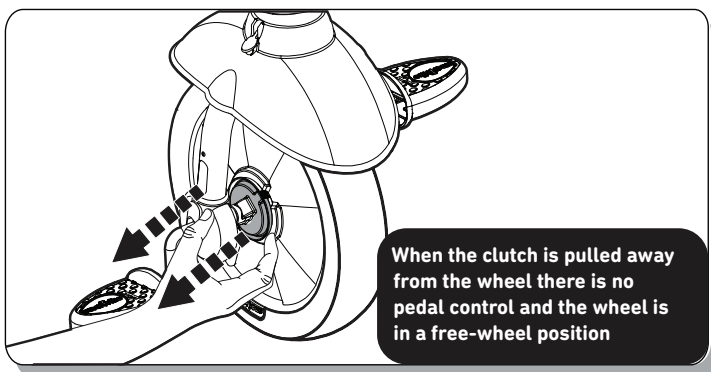
CLICK!

Insert part L into the the safetybar, until you hear a "click".

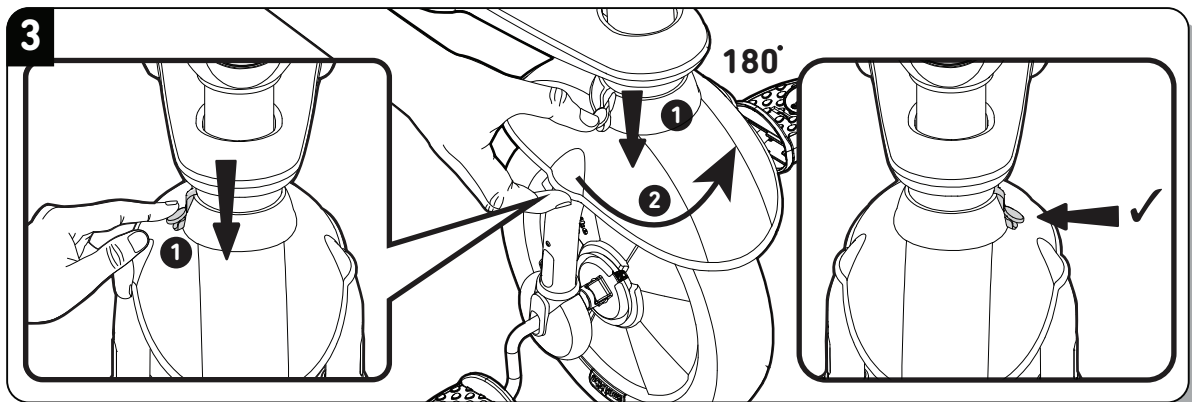
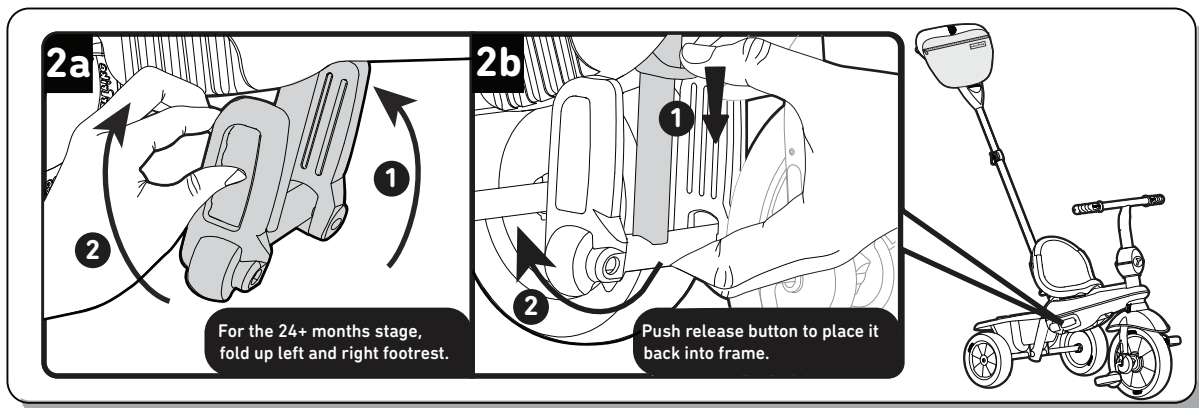
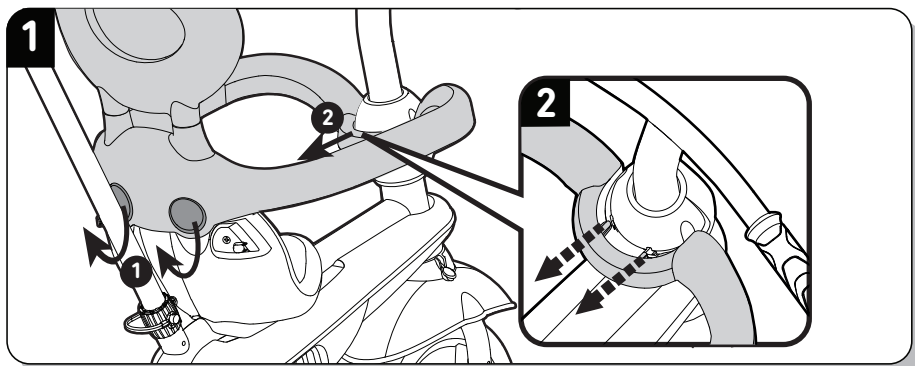


For a step-by-step visual assembly guide, scan the code on the front cover

Parent Control

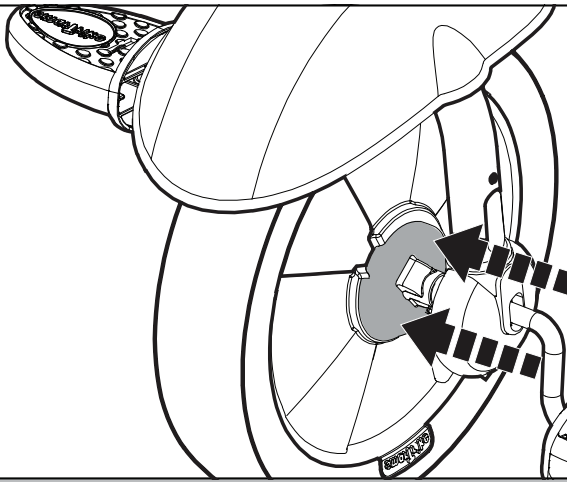


Child Control



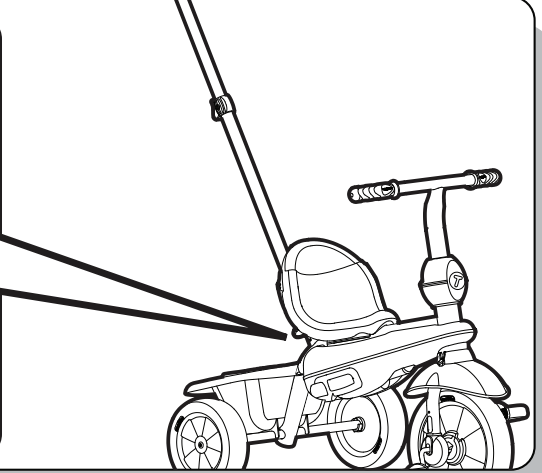
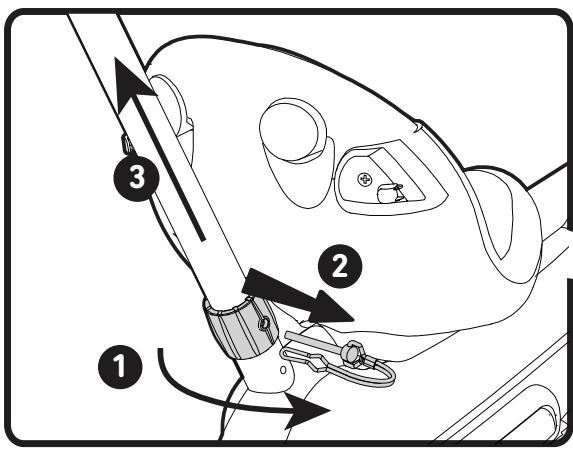
For a step-by-step visual assembly guide, scan the code on the front cover

4

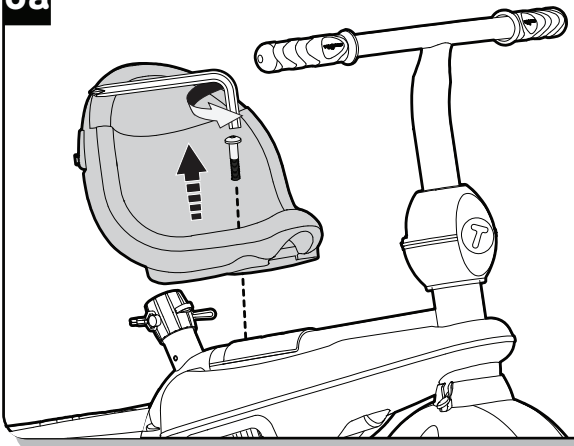


When the clutch is pushed closed and aligned with the front wheel, child has pedal control.

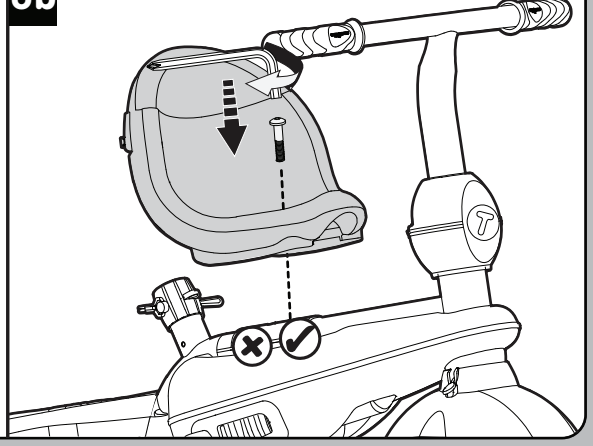
5



6a



6b



For a step-by-step visual assembly guide, scan the code on the front cover

The Original
smarTrike[®]



www.smarTrike.com

www.youtube.com/user/smartrikeofficial

66528234603