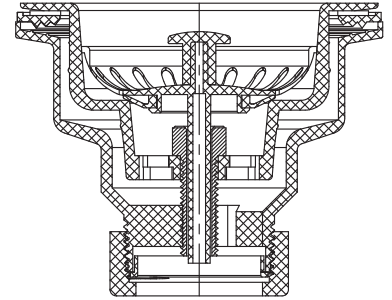


Deep Cup Sink Strainer

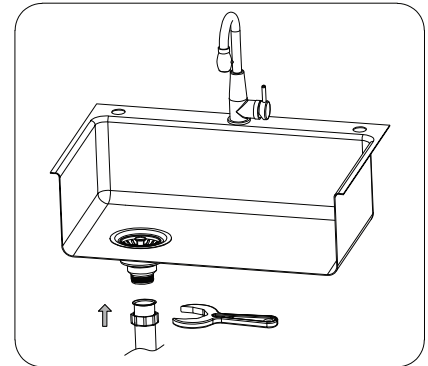
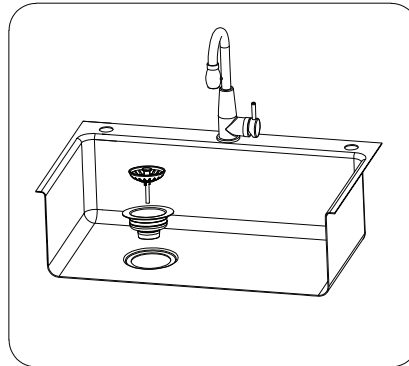
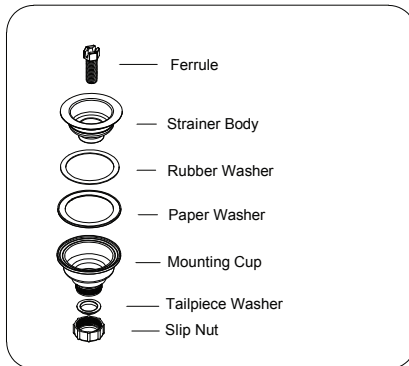
DIRECTIONS:

- Remove all components from strainer body.
- Apply plumber's putty between strainer body and sink.
- Insert strainer body firmly in place while installing under sink - first apply sponge washer and rubber washer, next the secondary body, then insert the screw top from the main strainer body. Hand-tighten firmly and connect the two bodies together.
- Place flanged tailpiece washer onto tailpiece and install slip nut with threads upward on tailpiece. Screw slip nut onto threaded shank of strainer body. Tighten firmly with wrench.



REQUIRED TOOLS:

Wrench
Plumber's putty



ALLEN + ROTH and logo design are trademarks
or registered trademarks of LF, LLC. All rights reserved.

Thank you for purchasing this **ALLEN+ROTH** product. Questions, problems or missing parts? Before returning, contact us on: **866-439-9800**, 8 a.m. - 8 p.m., EST, Monday - Sunday or **ascs@lowes.com**.