

# Carlon® Flex-Plus® Blue™ Electrical Nonmetallic Tubing (ENT) and Accessories

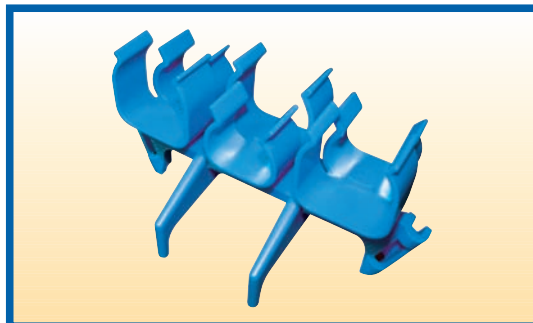
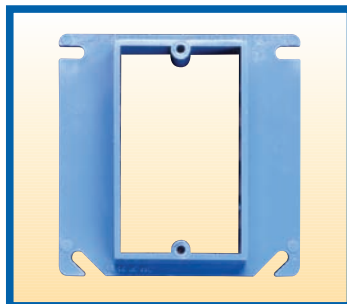
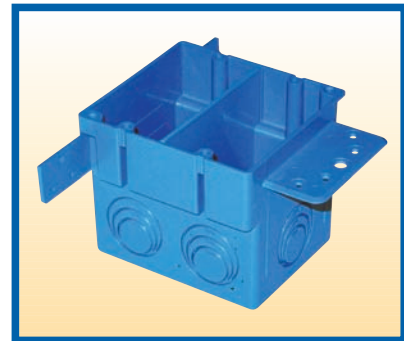
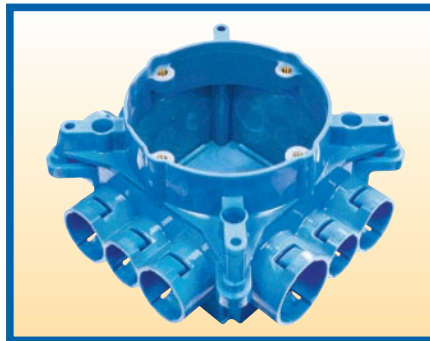
*ENT Tubing*

*Adapters  
& Couplings*

*Mud Box  
Assemblies*

*Stub Downs*

*Outlet and  
Switch Boxes*



## Contents

### Carlton® Flex-Plus® Blue™ Electrical Nonmetallic Tubing (ENT) and Accessories

Flex-Plus® Blue™ ENT .....	3
Stub Downs .....	4
Mud Box Assemblies .....	5
Mounting Brackets .....	6
ENT Bridge .....	6
Transition Adapters .....	7
Outlet and Switch Boxes - Eccentric Knockouts .....	8
Outlet Box Divider .....	8
Quick Connect Adapters & Couplings .....	9
Schedule 40 Adapters and Couplings .....	9
2 1/2" & 4" Mud Boxes and Covers .....	10
Quick Connect Outlet and Switch Boxes .....	10
ENT Box with Adapters .....	11
ENT Box Extenders .....	11
Round Covers for Octagon Ceiling Boxes .....	11
Quick Connect 4" Octagon Ceiling Boxes .....	12
HOLFORM™ Concrete Sleeves .....	12
PVC Conduit Cutters .....	13
Tape .....	13
Carlton® Cement .....	13
Concrete Encasement Guidelines .....	14
Specifications .....	14
Features .....	15
Approved Uses .....	15
Typical Applications .....	15



## Flex-Plus® Blue™ ENT

is a nonmetallic flexible raceway for use in walls, floors, and non-plenum ceilings. It's lightweight, hand bendable, and free from sharp edges, which reduces installation time and saves money.

See pages 31-32 for technical information.

### Options:

- Sizes 1/2" through 2"
- Colors:
  - ◆ Yellow color for communication circuits and signaling cable
  - ◆ Red color for fire alarm circuits
  - ◆ Blue color for power circuits
- Packaging: Coils or Reels

### Standard Stock – Reels

	Color	Part No.	Nom. I.D.	Nom. O.D.	Pull Tape	Min. Bend Radius	Reel Size (F x W)	Reel Type (W=Wood)	Reel Length	Reel Wt. (lbs.)	Wt. per 100 ft. (lbs.)
1/2"	Blue	12005AK-001	.56	.84	Empty	6"	36" x 24"	W	1500	40	10
	Yellow	1205AKY-001	.56	.84	Empty	6"	36" x 24"	W	1500	40	10
	Red	1205AKR-001	.56	.84	Empty	6"	36" x 24"	W	1500	40	10
3/4"	Blue	12007AA-001	.76	1.05	Empty	6"	36" x 24"	W	1000	40	14
	Yellow	1207AAY-001	.76	1.05	Empty	6"	36" x 24"	W	1000	40	14
	Red	1207AAR-001	.76	1.05	Empty	6"	36" x 24"	W	1000	40	14
1"	Blue	12008-750	1.00	1.315	Empty	6"	36" x 24"	W	750	40	20
	Yellow	12008Y-750	1.00	1.315	Empty	6"	36" x 24"	W	750	40	20
	Red	12008R-750	1.00	1.315	Empty	6"	36" x 24"	W	750	40	20
1 1/4"	Blue	12009-750	1.402	1.66	Empty	7"	48" x 32"	W	750	90	19
1 1/2"	Blue	12010-750	1.554	1.90	Empty	8 1/4"	48" x 32"	W	750	90	39
	Yellow	12010Y-750	1.554	1.90	Empty	8 1/4"	48" x 32"	W	750	90	39
2"	Blue	12011-500	2.030	2.375	Empty	9 1/2"	48" x 32"	W	500	90	32
	Red	12011R-500	2.030	2.375	Empty	9 1/2"	48" x 32"	W	500	90	32
	Yellow	12011Y-500	2.030	2.375	Empty	9 1/2"	48" x 32"	W	500	90	32

\*1-1/4" - 2" available in yellow & red, made to order; consult factory.

### Standard Stock – Coils

	Color	Part No.	Nom. I.D.	Nom. O.D.	Pull Tape	Min. Bend Radius	Coil Length (ft.)	Wt. per 100 ft. (lbs.)
1/2"	Blue	12005-200	.56	.84	Empty	6"	200	10
	Yellow	12005Y-200	.56	.84	Empty	6"	200	10
	Red	12005R-200	.56	.84	Empty	6"	200	10
3/4"	Blue	12007-100	.76	1.05	Empty	6"	100	14
	Yellow	12007Y-100	.76	1.05	Empty	6"	100	14
	Red	12007R-100	.76	1.05	Empty	6"	100	14
1"	Blue	12008-100	1.00	1.315	Empty	6"	100	22
	Yellow	12008Y-100	1.00	1.315	Empty	6"	100	22
	Red	12008R-100	1.00	1.315	Empty	6"	100	22

### 10 ft. Lengths

	Color	Part No.	Nom. I.D.	Nom. O.D.	Std. Ctn. Qty.	Std. Ctn. Wt. (lbs.)
1/2"	Blue	12005-UPC	.56	.84	10 ft.	1.02
3/4"	Blue	12007-UPC	.76	1.05	10 ft.	1.46
1"	Blue	12008-010	1.00	1.315	10 ft.	2.93

NOTE: The solid blue color of ENT conduit is a registered trademark of Carlon.

ENT may show color deterioration in direct sunlight over an extended period of time. It is suggested that all ENT products not be stored outside. Since this product is not intended for use outdoors, it should not be exposed to extended periods of direct sunlight.

## Stub Downs

### Vertical Stub Down



**Carlson Vertical Stub Downs** are designed to provide a quick, easy connection to a wood deck or transition from slab-to-slab using Carlson's "Quick Connect" snap-in design...simply snap the ENT in place. The integral snaps provide a secure mount – preventing the ENT from pulling out while maintaining the ability for easy removal of the fitting once the deck is removed. All in a concrete tight application. The underside of this fitting provides ample room to attach a Carlson coupling to the ENT to continue the run. Carlson Vertical Stub Downs are manufactured out of a highly engineered thermoplastic material to provide extra strength and durability, and are available in sizes 1/2", 3/4" and 1".

Part. No.	Size	Std. Ctn. Qty.	Std. Ctn. Wt. lbs.
A210D	1/2"	50	3.8
A210E	3/4"	50	3.7
A210F	1"	50	4.8

Patent Pending

**Carlson Exclusive**



### Vertical Stub Down Transition Adapter

**CARLON NONMETALLIC EXCLUSIVE...Carlson Vertical Stub Down Transition Adapters** like our Vertical Stub Downs, provide a means to transition from ENT to another wire management product where code requires other wire management means i.e. "area of physical damage" (ref. NEC 352.12C). The integral snaps provide a secure mount – preventing the ENT from slipping or pulling out, while the deck mount flange has a threaded port allowing connection to other conduit system using a terminal adapter. Carlson Vertical Stub Down Transition Adapters are manufactured out of polycarbonate material to provide extra strength and durability. They're concrete tight, and available in sizes 1/2", 3/4" and 1".



Part. No.	Size	Std. Ctn. Qty.	Std. Ctn. Wt. lbs.
A200D	1/2" Female ENT to NPSC (Female)	50	2.3
A200E	3/4" Female ENT to NPSC (Female)	50	2.8
A200F	1" Female ENT to NPSC (Female)	50	3.9

### 45° Stub Down



**Carlson 45 Degree Stub Downs** are designed to allow a smooth transition from cross deck ENT runs to vertical applications. The integral snaps provide a secure mount – preventing the ENT from slipping or pulling out- but also allow the stub to easily be removed. The underside of this fitting provides ample room to attach a Carlson coupling to the ENT to continue the run. Carlson 45 Degree Stub Downs are manufactured out of a highly engineered thermoplastic material to provide extra strength and durability. They're concrete tight, and available in sizes 1/2", 3/4" and 1".

Part. No.	Size	Std. Ctn. Qty.	Std. Ctn. Wt. lbs.
A220D	1/2"	25	1.8
A220E	3/4"	25	2.0
A220F	1"	25	2.6

Patent Pending

**Carlson Exclusive**



### 90° Stub Down Transition Adapter

**CARLON NONMETALLIC EXCLUSIVE...Carlson 90 Degree Stub Downs** are designed to allow a smooth transition from cross deck ENT runs to vertical applications where code requires other wire management means, i.e. "area of physical damage" (ref. NEC 352.12C). The integral snaps provide a secure mount – preventing the ENT from slipping or pulling out, while the deck mount flange has a threaded port allowing connection to any conduit system using a terminal adapter. Carlson 90 Degree Stub Downs are manufactured out of polycarbonate material to provide extra strength and durability. They're concrete tight, and available in sizes 1/2", 3/4" and 1".



Part. No.	Size	Std. Ctn. Qty.	Std. Ctn. Wt. lbs.
A230D	1/2" Female ENT to NPSC (Female)	25	2.0
A230E	3/4" Female ENT to NPSC (Female)	25	2.4
A230F	1" Female ENT to NPSC (Female)	25	3.3



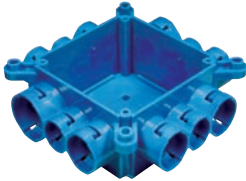
Except where noted by ►

**Cement caps included**

## Mud Box Assemblies

**Carlson Mud Box Assemblies** are available in five unique styles...blank, ceiling ring, one-gang, two-gang and 4 square. All Mud Box Assemblies are manufactured out of polycarbonate material to provide extra strength and durability, are concrete tight, and have twelve integral connectors...two-1", six-3/4", and four-1/2". Using our new ENT Reducers, this product will meet ANY jobsite application.

### Mud Box Base with Blank Cover



Part. No.	Size	Std. Ctn. Qty.	Std. Ctn. Wt. lbs.
► A863BC	Mud Box w/ Blank Cover	24	12.3

Patent Pending

### Mud Box with Ceiling Ring



- Threaded brass inserts for fan (#10-32 screws) and fixture (#8-32 screws) mountings
- Listed for fixture support up to 50 lbs.
- Listed for ceiling fans up to 35 lbs.

Part. No.	Size	Std. Ctn. Qty.	Std. Ctn. Wt. lbs.
► A863CF	Mud Box w/ Ceiling Ring	24	15.5
A863CFG	Mud Box w/ Ceiling Ring & Ground Lug	24	16.1

Patent Pending

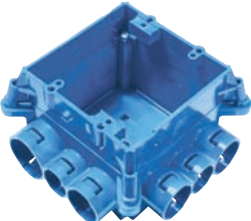
### Mud Box with One-Gang Ring



Part. No.	Size	Std. Ctn. Qty.	Std. Ctn. Wt. lbs.
► A863S	Mud Box w/ One-Gang Ring	24	16.8
A863SG	Mud Box w/ One-Gang Ring & Ground Lug	24	16.2

Patent Pending

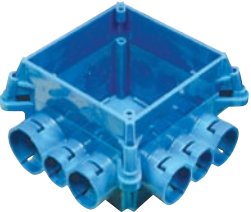
### Mud Box with Two-Gang Ring



Part. No.	Size	Std. Ctn. Qty.	Std. Ctn. Wt. lbs.
► A863D	Mud Box w/ Two-Gang Ring	24	15.8
A863DG	Mud Box w/ Two-Gang Ring & Ground Lug	24	16.6

Patent Pending

### Mud Box with 4 Square Ring



- 4 Square Ring not for luminaries.

Part. No.	Size	Std. Ctn. Qty.	Std. Ctn. Wt. lbs.
► A863-4SQ	Mud Box w/ 4 Inch Square Ring	24	15.2

Patent Pending

### Mud Box Assemblies with Mounting Feet

Carlson Mud Box Assemblies w/ Mounting Feet are specifically engineered and designed for use in Tunnel Form applications. The mounting feet are located on all four corners and allow the box to attach directly to the wall of the form using pop rivets. The pop rivets help keep the box in position during the pour and provide a safe, secure, and rust resistant mount.

**NEW**

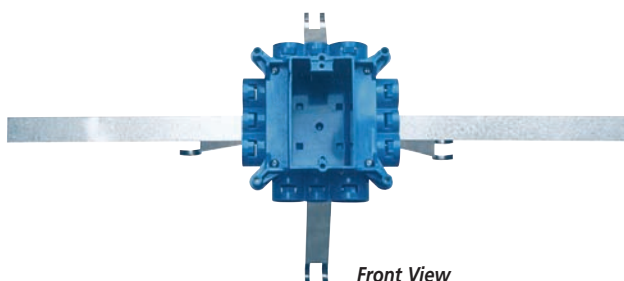
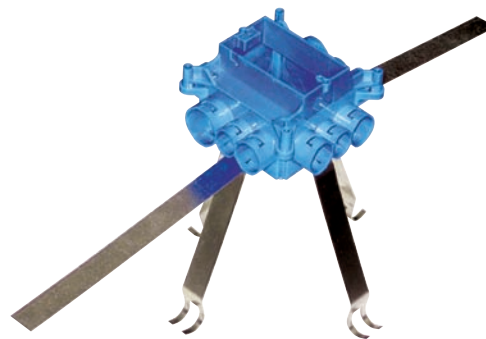
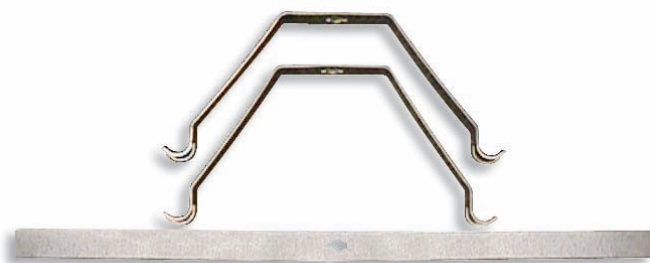


Part. No.	Size	Std. Ctn. Qty.	Std. Ctn. Wt. lbs.
A863-4SQF	4-Square Ring	24	17.15
A863CFF	Ceiling Ring	24	16.61
A863CFGF	Ceiling Ring and Ground Lug	24	17.46
A863DF	Double Gang	24	17.42
A863DGF	Double Gang and Ground Lug	24	17.99
A863SF	Single Gang	24	17.15
A863SGF	Single Gang and Ground Lug	24	17.44

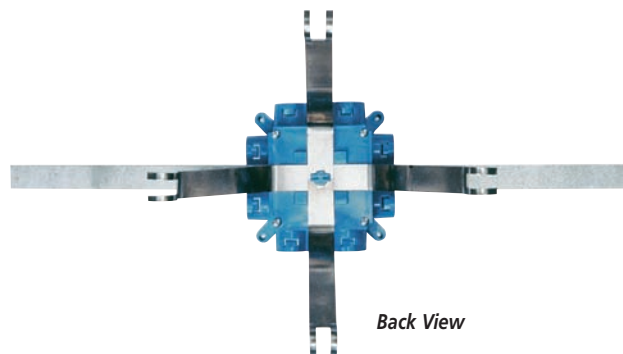
Patent Pending



## Mounting Brackets



Front View



Back View

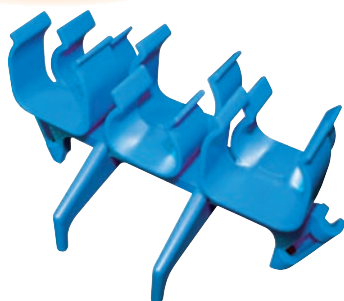
**Carlon  
Exclusive**

**CARLON EXCLUSIVE...The Carlon ENT Mounting Bracket** is specifically designed for use with Carlon ENT Mud Box Assemblies in vertical concrete walls where one- or two-gang boxes are needed. The stainless steel spring-loaded mechanism provides a secure outlet box between concrete forms while the soft steel strap allows for the outlet box to be secured to rebar. The bracket combination assures a straight box opening and a concrete tight fit. Mud Box not included.

Part. No.	Size	Std. Ctn. Qty.	Std. Ctn. Wt. lbs.
A863MB	Mud Box Mounting Kit	1	.98

Patent Pending

## ENT Bridge



**Carlon  
Exclusive**

**CARLON EXCLUSIVE...The Carlon ENT Bridge** is designed to support long ENT runs in concrete pour applications. This makes pulling wire/cable a snap. Installation is easy...simply mount the ENT bridge, using nails or screws, to the wood deck mounting and snap the ENT into place. The bridge is designed to hold the conduit in place while minimizing dips in the conduit over long runs. The Carlon ENT Bridge is manufactured out of a highly engineered thermoplastic material to provide extra strength and durability, and can accommodate ENT sizes 1/2", 3/4", and 1".

Part. No.	Size	Std. Ctn. Qty.	Std. Ctn. Wt. lbs.
A293DEF	ENT Bridge	50	9.0

Patent Pending

## Transition Adapters

**Carlson  
Exclusive**



### Male ENT to Schedule 40 & 80 PVC Conduit

**CARLON EXCLUSIVE...** Carlson Male ENT to Schedule 40 & 80 PVC Conduit Transition Adapters are designed to connect Schedule 40 conduit to Carlson Flex-Plus® Blue™ ENT boxes and fittings. Simply solvent cement the PVC adapter to the Schedule 40 conduit and snap the adapter into the Carlson's "Quick Connect" snap-in connector on the box or fitting. Carlson Male ENT to Schedule 40 & 80 Adapters are concrete tight and available in sizes 1/2", 3/4" and 1".



Part. No.	Size	Std. Ctn. Qty.	Std. Ctn. Wt. lbs.
A263D	1/2" ENT to 1/2" Sch. 40 or Sch. 80	100	2.4
A263E	3/4" ENT to 3/4" Sch. 40 or Sch. 80	100	3.2
A263F	1" ENT to 1" Sch. 40 or Sch. 80	100	4.5

Patent Pending

### ENT to EMT



**Carlson ENT to EMT Transition Adapters** are designed to easily transition from Carlson Flex-Plus® Blue™ ENT to EMT using Carlson's "Quick Connect" snap-in design. The EMT is held securely in place using the small screw provided. This helps prevent the EMT from slipping/shifting out of the adapter. All ENT to EMT adapters are manufactured out of polycarbonate material to provide extra strength and durability. They're concrete tight, and available in sizes 1/2", 3/4" and 1".



Part. No.	Size	Std. Ctn. Qty.	Std. Ctn. Wt. lbs.
A245D	1/2" ENT to 1/2" EMT	100	3.4
A245E	3/4" ENT to 3/4" EMT	100	4.1
A245F	1" ENT to 1" EMT	100	5.4

**Carlson  
Exclusive**



### Reducers

**CARLON EXCLUSIVE...** Carlson ENT Reducers are designed to provide an easy transition from 1" Carlson ENT to 3/4" ENT or from 3/4" Carlson ENT to 1/2" ENT. They're concrete tight, and manufactured out of polycarbonate material to provide extra strength and durability. Carlson ENT Reducers provide flexibility while on the jobsite by minimizing the need to carry size specific boxes and fittings. Carlson ENT Reducers provide the versatility to convert Carlson fittings and boxes to many different sizes and configurations.



Part. No.	Size	Std. Ctn. Qty.	Std. Ctn. Wt. lbs.
A273DE	3/4" to 1/2"	100	3.2
A273EF	1" to 3/4"	100	2.4

Patent Pending

## Outlet and Switch Boxes - Eccentric Knockouts

**Carlton Exclusive**

**Carlton ENT Outlet and Switch Boxes with Eccentric Knockouts** are designed to allow selective ENT openings – 1/2", 3/4" and 1" – based on application needs. They provide the largest capacity available in the market today - 22 cu. in. Single Gang, and 38 cu. in. Double Gang – and can be mounted to wood or steel studs. Carlton ENT Outlet and Switch Boxes with Eccentric Knockouts are manufactured out of a highly engineered thermoplastic material to provide extra strength and durability, and are available in single gang and double gang styles. Note: The double gang version is also a 4 square box.



### Single Gang – 22 cu. in.

Part. No.	Size	Capacity Cu. in.	Std. Ctn. Qty.	Std. Ctn. Wt. lbs.
A122	Single-Gang	22	25	6.8

*Patent Pending*



### Combination Two Gang/Four Square Box – 38 cu. in.

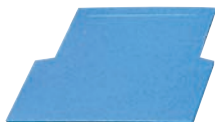
Part. No.	Size	Capacity Cu. in.	Std. Ctn. Qty.	Std. Ctn. Wt. lbs.
A238	Two-Gang	38	25	8.9

*Patent Pending*

## Outlet Box Divider



**Carlton ENT Outlet Box Divider** is specifically designed for applications where a combined high and low voltage closed back box is needed such as placement in a fire-rated wall. Just slip the divider into place, to give you the split box you need. The Carlton ENT Outlet Box Divider is UL Recognized for use with Carlton A238 Box only.



Part. No.	Size	Std. Ctn. Qty.	Std. Ctn. Wt. lbs.
A238DIV	–	50	1.87





## Quick Connect Adapters & Couplings

- Carlon one piece ENT Quick Connect Couplings, Threaded Adapters and Snap-In Terminator Adapters are suitable for damp locations. Quick Connect Couplings and Threaded Adapters are concrete-tight when used with Carlon ENT.
- All Schedule 40 fittings are compatible with ENT when using ENT cement.
- Schedule 40 fittings are recommended for use with Carlon 1 1/4" - 2" Flex-Plus Blue ENT.
- Use of ENT Blue Quick-Set Cement is required. See page 13 for details.
- When One Piece Quick Connect Snap-In Terminator Adapters are installed in a concrete application, Carlon's flat sealing washers must be used on the box connection ends.

### Couplings



Part. No.	Size	Standard Carton Quantity	Standard Carton Weight (lbs.)
A240D	1/2"	150	2.90
A240E	3/4"	100	3.00
A240F	1"	50	2.30

### Threaded Adapters



Part. No.	Size	Standard Carton Quantity	Standard Carton Weight (lbs.)
A243D	1/2"	150	2.55
A243E	3/4"	100	2.30
A243F	1"	50	2.00

### Snap-In Adapters



Part. No.	Size	Standard Carton Quantity	Standard Carton Weight (lbs.)
A253D	1/2"	150	2.70
A253E	3/4"	100	2.90
A253F	1"	50	2.30

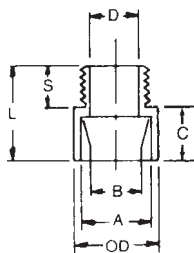
## Schedule 40 Adapters and Couplings



### Male Terminal Adapters



For adapting nonmetallic conduits to boxes, threaded fittings, metallic systems. Male threads on one end, socket end on other.



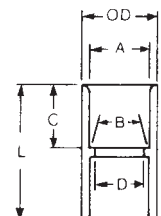
Part No.	Size	Std. Ctn. Qty.	A Typical	B Typical	Min. D	Max. OD	C Typical	S Typical	L Typical	Std. Ctn. Wt. (lbs.)
E943D	1/2"	150	.852	.836	.597	1 1/8	5/8	9/16	1 5/16	2.8
E943E	3/4"	125	1.064	1.046	.800	1 11/32	3/4	9/16	1 3/8	3.5
E943F	1"	50	1.330	1.310	1.018	1 5/8	1	1 1/16	1 25/32	3
E943G	1 1/4"	50	1.677	1.655	1.332	2 1/32	1	3/4	1 15/16	4
E943H	1 1/2"	25	1.918	1.894	1.566	2 5/32	1 3/16	3/4	2 1/16	2.5
E943J	2"	50	2.393	2.369	2.000	2 21/32	1 3/16	3/4	2 1/8	7

### Standard Couplings

All socket fittings should be attached Using Carlon solvent cement. Using Carlon fittings with Carlon nonmetallic conduit insures system integrity.

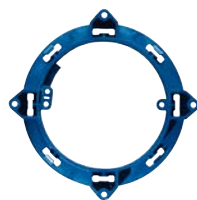


Socket type for joining nonmetallic conduit.



Part No.	Size	Std. Ctn. Qty.	A Typical	B Typical	Min. D	Max. OD	C Typical	L Typical	Std. Ctn. Wt. (lbs.)
E940D	1/2"	150	.852	.836	.728	1 7/64	1 1/16	1 1/2	4.1
E940E	3/4"	100	1.064	1.046	.840	1 5/16	3/4	1 5/8	4.4
E940F	1"	50	1.330	1.310	1.210	1 5/8	1 5/16	2	3.5
E940G	1 1/4"	30	1.677	1.655	1.535	1 63/64	1	2 1/8	3.5
E940H	1 1/2"	25	1.918	1.894	1.755	2 15/64	1 1/8	2 3/8	3.9
E940J	2"	30	2.393	2.369	2.190	2 47/64	1 3/16	2 1/2	5.25

## 2 1/2" & 4" Mud Boxes and Covers



### Base Rings

Listed for use with ceiling fans up to 35 lbs. and for fixture support up to 50 lbs.

Part. No.	Size	Std. Ctn. Qty.	Std. Ctn. Wt.
A861	Without ground lug	10	2.5
CA861G	With ground lug	10	2.0



### Covers

Part. No.	Size	Std. Ctn. Qty.	Std. Ctn. Wt.
A862D	2 1/2" Deep (1/2" KO's)	10	2.5
A862E	2 1/2" Deep (3/4" KO's)	10	2.1
A864D	4" Deep (1/2" KO's)	10	2.9
A864E	4" Deep (3/4" KO's)	10	2.9
A864F	4" Deep (1" KO's)	10	3.0

## Quick Connect Outlet and Switch Boxes

- Suitable for masonry walls

- Meets NEMA OS-2



### Single Gang – 16 cu. in.



Part. No.	Description	Standard Carton Quantity	Standard Carton Weight (lbs.)
A58381D	3 x 2 1/4 x 3 (1/2" KO's)	25	4.6
A58381E	3 x 2 1/4 x 3 (3/4" KO's)	25	4.6

### 4 Inch Square – 20 cu. in.



Part. No.	Description	Standard Carton Quantity	Standard Carton Weight (lbs.)
A52151D	4 x 4 x 1 1/2 (1/2" KO's)	100	22.6
A52151E	4 x 4 x 1 1/2 (3/4" KO's)	100	22.6
A521DE	4 x 4 x 1 1/2 (1/2" & 3/4" KO's)	100	22.6

### 4 Inch Square – 30.3 cu. in.

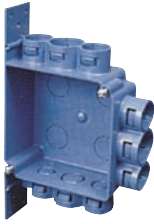


Part. No.	Description	Standard Carton Quantity	Standard Carton Weight (lbs.)
A52171D	4 x 4 x 2 3/8 (1/2" KO's)	25	7.6
A52171E	4 x 4 x 2 3/8 (3/4" KO's)	25	7.6
A5217DE	4 x 4 x 2 3/8 (1/2" & 3/4" KO's)	25	7.6

## ENT Box with Adapters



E42728 Except where noted by ►



### 4 Inch Square – 24.75 cu. in. ENT Box with Adapters

Part. No.	Description	Standard Carton Quantity	Standard Carton Weight (lbs.)
A5329DE	4 x 4 x 1 <sup>3</sup> / <sub>4</sub> (1/2" & 3/4" KO's)	50	14.8

### Box Back Wall Support



Part. No.	Description	Standard Carton Quantity	Standard Carton Weight (lbs.)
► A540DS	For use with 1/2" Knockout	100	2.1

## ENT Box Extenders

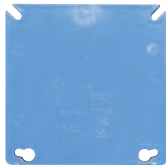


E42728



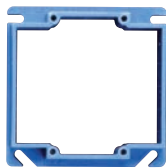
### Single Gang

Part. No.	Rise	Cu. in.	Standard Carton Quantity	Standard Carton Weight (lbs.)
A410	1/2"	3.5	100	7.7
A411	5/8"	4.2	50	4.6
A412	3/4"	5.0	50	5.1
A413	1"	6.6	40	5
A414	1 1/4"	8.1	30	4.4



### Two Gang

Part. No.	Rise	Cu. in.	Standard Carton Quantity	Standard Carton Weight (lbs.)
A400	Blank	-	100	7.7
A420	1/2"	6.1	75	5.0
A421	5/8"	7.4	50	4.2
A422	3/4"	8.8	50	4.8



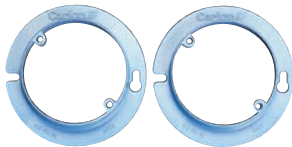
## Round Covers for Octagon Ceiling Boxes



E42728

### Round Plaster Rings

- Suitable for fixture support



Part. No.	Rise	Cu. in.	Standard Carton Quantity	Standard Carton Weight (lbs.)
A471	1/2"	3.2	100	3.3
A472	3/4"	4.0	100	3.7

### Round Blank Covers



Part. No.	Rise	Cu. in.	Standard Carton Quantity	Standard Carton Weight (lbs.)
E460R-CAR	Blank	-	35	2.2
A470D	Blank with 1/2" KO	-	100	6.2

## Quick Connect 4" Octagon Ceiling Boxes

- Carlon ceiling boxes and round plaster rings are produced from a special high heat resistant engineered plastic material developed specifically for fixture support.
- Listed for fixture support up to 50 lbs.



LISTED  
E42728

Except where  
noted by ►

### Ceiling Box – 20.5 cu. in.



Part. No.	Description	Standard Carton Quantity	Standard Carton Weight (lbs.)
A615D	4 - 2 1/8" Deep (1/2" KO's)	50	6.4
A615E	4 - 2 1/8" Deep (3/4" KO's)	50	6.4
A615DE	4 - 2 1/8" Deep (1/2" & 3/4" KO's)	50	6.4



### Ceiling Box with J Mount – 20.5 cu. in.

Part. No.	Description	Standard Carton Quantity	Standard Carton Weight (lbs.)
A615DJ	4 - 2 1/8" Deep (1/2" KO's)	50	18.7



### Ceiling Box with L Bracket – 20.5 cu. in.

Part. No.	Description	Standard Carton Quantity	Standard Carton Weight (lbs.)
A615DL	4 - 2 1/8" Deep (1/2" KO's)	50	6.4



### Ceiling Box with Adjustable Hanger Bar – 20.5 cu. in.

Adjust from 14 1/4" to 23 1/4"

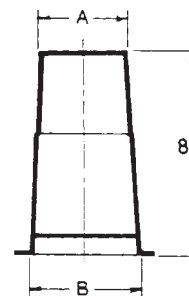
Part. No.	Description	Standard Carton Quantity	Standard Carton Weight (lbs.)
A615DH	4 - 2 1/8" Deep (1/2" KO's)	25	13.6

## HOLFORM™ Concrete Sleeves

HOLFORM nonmetallic concrete sleeve forms are the easy way to form holes in concrete. They install in seconds with nails, screws or staples and are easily removed. Concrete will not adhere to them. HOLFORMS are adjustable to any slab thickness.



Part No.	Min. O.D. A	B	Std. Ctn. Qty.	Std. Ctn. Wt. (lbs.)
► E92CSH	1 1/2	1 3/4	20	3
► E92CSJ	2	2 13/32	25	6
► E92CSL	3	3 13/32	25	8
► E92CSN	4	4 13/32	18	8
► E92CSP	5	5 13/32	15	8
► E92CSR	6	6 13/32	12	8



## PVC Conduit Cutters

### Small Cutter



For fast, smooth field cuts of 1/2" through 1" Flex-Plus® Blue™ ENT.

Part No.	Size	Std. Ctn. Qty.
CC120B	8"	10

### Medium Cutter



Hand held cutter makes fast square, smooth field cuts on conduit, sizes 1/2" through 1 1/4". Produces burr-free cut with no shavings. Fits into pocket or pouch.

Part No.	Size	Std. Ctn. Qty.
CC125	9"	12

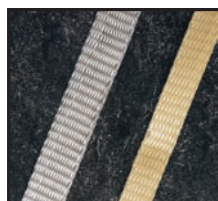
### Large Cutter



For clean cuts of conduit, sizes 1/2" through 2".

Part No.	Size	Std. Ctn. Qty.
CC122	17 1/2"	1

## Tape



Prelubricated, woven polyester tape made from low friction, high abrasion resistant yarns providing a low coefficient of friction. Tape is printed with sequential footage markings for accurate measurements.

Part. No.	Size	Tensile Strength	Reel Lengths
TL14505	1/2"	1250 lbs.	5,000 ft.
TL14510	1/2"	1250 lbs.	10,000 ft.
TL38203	5/8"	1800 lbs.	3,000 ft.
TL38265	5/8"	1800 lbs.	6,500 ft.
TL38210	5/8"	1800 lbs.	10,000 ft.

Other tapes are available. Consult your sales service location for additional information.

## Carlon® Cement

(MSDS sheets available at [www.carlon.com](http://www.carlon.com))

\*Meets ASTM D2564

### All-Weather ENT Blue "Quick-Set" Solvent Cement with brush\*



Part No.	Size	Std. Ctn. Qty.
VC9992	Quart	12
VC9993	Pint	24

ENT cement required for use with ENT

#### Recommended pipe application and sizes

Recommended for use with Flex-Plus® Blue™ ENT (Electrical Nonmetallic Tubing), Riser-Gard®, P&C Flex®, and Carlon PVC fittings.

Up through 4" diameter.

#### Set-up time (Evaporation Rate)

10°-30°F 4-5 minutes  
30°-50°F 3-4 minutes  
50°-70°F 1-2 minutes  
70°-90°F 1/2-1 1/2 minutes

#### Recommended installation temperature

4° to 100°F

#### Lap Shear @ 73°F

2 hrs. 350 psi  
16 hrs. 800 psi  
72 hrs. 1,500 psi

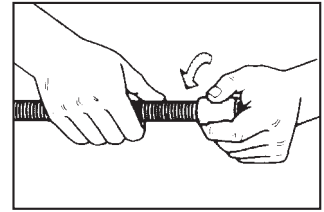
#### Viscosity at 75° as manufactured

400-700 cps



## Concrete Encasement Guidelines

1. Cut ENT square and cleanly.
2. Insert end into fitting, making sure two (2) full corrugations are snapped into fitting beyond flexible tabs (2 clicks).
3. ENT should be tied to rebar at 2-3 foot intervals to prevent flotation. Keep ENT straight. Small deflections over a long run may accumulate significant degrees of bend which will affect conductor installation. Suitable materials include wire, tie wraps, and tape.
4. When using UL solvent weld fittings for concrete tight performance:
  - E. Promptly insert ENT into fitting while cement is wet, until the stop is reached, and give a quarter turn.
  - F. Do not disturb until joint is set.



- A. Do not use chemical primer or cleaner.
- B. Apply a light, uniform coat of cement labeled for use with ENT on the coupling and ENT.
- C. Do not use a dauber.
- D. Brush excess cement out of ENT grooves.

## Specifications

- 1.1 Electrical Nonmetallic Tubing (ENT), is designed to replace EMT, flexible metal conduit or other raceway or cable systems, for installation in accordance with Article 362 of the National Electrical Code, other applicable sections of the Code, and local codes.
- 1.2 Any ENT used shall meet the requirements of UL Standard UL 1653 and shall be listed by Underwriters Laboratories, Inc., as suitable for its intended purpose.
- 1.3 ENT shall be recognized by a National Evaluation Report for use in 1-hour and 2-hour rated construction.
- 1.4 Penetration of fire rated walls, floors or ceilings shall use classified Through-Penetration Firestop Systems described in the current Underwriters Laboratories Fire Resistance Directory.
- 1.5 Fittings and outlet boxes shall be designed for use with ENT and listed by Underwriters Laboratories. All fittings, boxes and accessories shall be from one manufacturer.
- 1.6 Only Carlon ENT Blue cement recommended specifically for use with ENT shall be used.
- 1.7 Unless indicated differently on drawings, ENT systems shall be color coded: BLUE for branch and feeder circuit wiring, YELLOW for communications, and RED for fire alarm and emergency systems.
- 1.8 ENT, fittings, and accessories shall be manufactured by Carlon.

## Features

- UL recognizes the use of PVC RNC cement type fittings with all sizes of ENT
- ENT rated for 90 deg C conductors
- One piece ENT Coupling, Threaded Terminator and RNC Transition Fitting are rated concrete tight without tape by UL
- Recognized for use in 2-hour fire resistive nonload bearing and load bearing wall assemblies
- Recognized for use in 1-hour fire resistive nonload bearing wall assemblies
- Recognized for use in a fire resistive ceiling assembly (up to 3 hours)
- Recognized for Through-Penetration Firestop systems as classified by UL to meet BOCA, SBCCI and ICBO codes.
- Conductors easily push through the raceway (up to approximately 50 feet)\*
- For use in buildings in accordance with NEC Article 362
- Approved for installations of a one and two hour fire rated wall assembly and up to a three hour rated floor/ceiling assembly
- Outside Diameters meet IPS Dimensions
- Storage            -4°F to 158°F
- Handling           -4°F to 104°F

## Approved Uses:

- Concrete slab – NEC Article 362
- Walls - wood stud, masonry and metal stud – NEC Article 362.
- Ceilings - permanent or dropped (free air only) – NEC Article 362.
- Exposed – NEC Article 362
- Public Assembly – NEC Section 518.4, in nonfire rated and certain fire rated structures
- Prewired – NEC Article 362
- Classified by UL 1479 for Through Penetration Firestop Systems in UL Guide Category XHEZ and current UL Fire Resistance Directory
- Three hour rated floor/ceiling assembly
- Raised Floors – NEC Section 645.5(D)(2)
- Exposed or concealed in building above three floors when a fire sprinkler system is installed in accordance with NFPA 13 – NEC Section 362.10(2)
- For use in residential attics up to 3 feet above the bottom of the ceiling joist.

## Typical Applications:

- Residential: Low or high rise – multi or single family
- Commercial: Low or high rise – office, retail, hotel/motel, restaurant, etc.
- Nursing Homes/Hospitals in nonpatient care areas only
- Schools, classrooms, dormitories, offices
- Fire Alarm Systems
- Recreational vehicles and parks
- Solar Photovoltaic systems
- Marinas and boatyards
- Other uses per the current NEC

