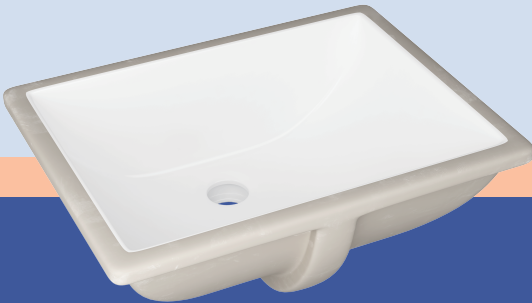


Installation Guide

BATHROOM UNDERMOUNT SINK



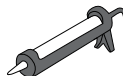
Tools and Materials



Safety
Glasses



Tape
Measure



Silicone
Adhesive



Pencil



Drill



Screwdriver

Plus :

- (1)Hole Saw (2)Air Hose
- (3)Putty Knife (4)Towel
- (4)Acetone/Denatured Alcohol

Reminder

Additional tools and parts might also be used to complete the installation.

Parts List :

- (1)Eridanus Undermount Sink (2)Mounting Clips (3)Cut-out Template

Prior to Installation



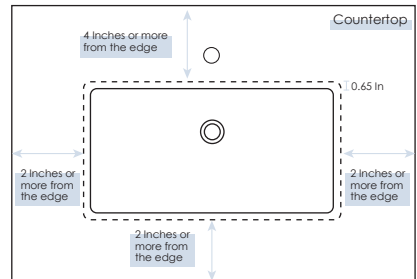
Read the following instructions carefully before you begin this installation:

- Use the cut-out template provided by Eridanus.
- Due to the handmade production, actual size of the item received may vary with a tolerance of 2%. It's best to cut the countertop according to the actual product to ensure the best alignment.
- Observe all local plumbing and building codes.
- Unpack and inspect sink to make sure it has not chipped or cracked during transit.
- Confirm you have all necessary parts by checking the parts list.

- Make sure the plumbing where sink is to be installed is in good condition and that there are no leaks or other problems that could cause issues during installation.
- When using tools like wrenches or screwdrivers, be sure to use them properly to avoid self-injury and damage to the sink or other parts. Do not overtighten fittings as it might damage the sink and countertop.
- The following installation diagrams are for general display and do not represent a specific model.
- Failure to install the sink with a licensed plumber shall void the warranty.

Cut the countertop

- Compare the cut-out template with the sink. Make adjustments if necessary.
- Place the cut-out template in the desired location on the countertop. Trace with a pencil.
- Confirm that the size of countertop will fit the sink. Cut, sand and clean the countertop accordingly.

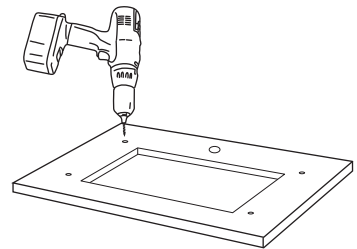


Installation Procedures

STEP I. Install Anchors

- a) Flip the countertop over and place it on a flat surface. Use the cut-out area/template as a guide to mark four locations for anchor placements on the countertop.
- b) Drill a hole (5/16" Ø x 1/2" D) at each location shown in the illustration.

Reminder Always consult with a licensed plumber to determine the quantity of mounting clips needed.

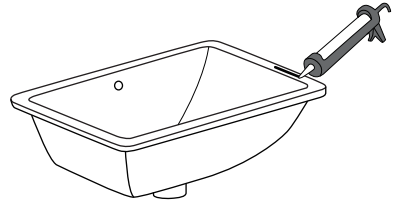


c) Apply epoxy and insert brass nut anchors into each one of the drilled holes. Wait until the epoxy cures before proceeding with the next step.

NOTE If an old sink is to be replaced, additional tools may be used to adjust existing cut-out area and ensure smooth installation.

STEP II. Mount Sink

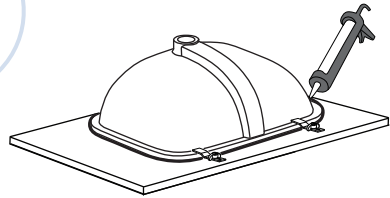
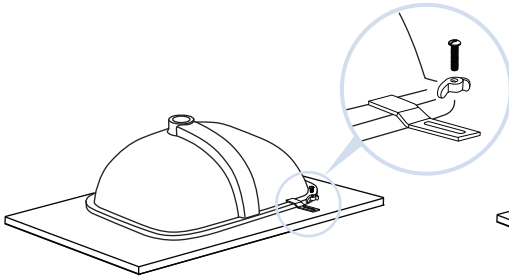
a) Apply silicone to the upper edge of the sink, align the sink with the cut-out area on the countertop. Press firmly and remove excess silicone.



b) Attach the mounting clips to the countertop using the screws and washers to hold sink in place.

c) Apply silicone again to the edge of the fixed sink to reinforce it.

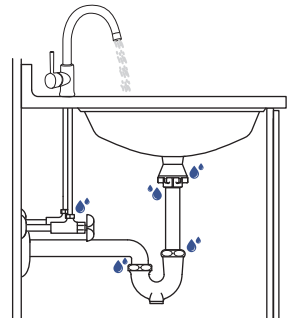
d) Wait for 24 hours. Flip the countertop right-side up, and install it onto the vanity with care.



STEP III. Check Plumbing

a) Install faucet, drain, trap, and other necessary parts.

b) Check for any potential leakage area to complete installation.



Installation Guide