



Buy it for looks. Buy it for life.®

*There is more than 1 version of this model.  
Page down to identify the version you have.*

## DESCRIPTION

- Metal construction with various finishes identified by suffix
- Includes hot and cold temperature indicators


## OPERATION

- Lever style handles
- Rotate hot side handle counterclockwise to open (clockwise to close)
- Rotate cold side handle clockwise to open (counterclockwise to close)

## FLOW

- EP suffix models are limited to 2.0 gpm (7.6 L/min) max for products manufactured prior to June 30, 2018. EP suffix models manufactured after June 30, 2018 are limited to 1.75 gpm (6.7 L/min) max.

## STANDARDS

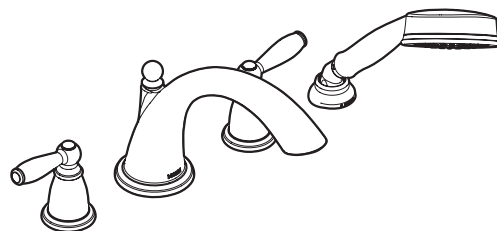
- Third party certified to ASME A112.18.1/CSA B-125.1, and all applicable requirements referenced therein
- **ADA**  for lever handles

## WARRANTY

- Lifetime limited warranty against leaks, drips and finish defects to the original homeowner
- 10 year limited warranty when used in a multifamily installation
- 5 year limited warranty when used in a commercial installation

Visit [www.moen.com/support](http://www.moen.com/support) for complete details and limitations

# Specifications



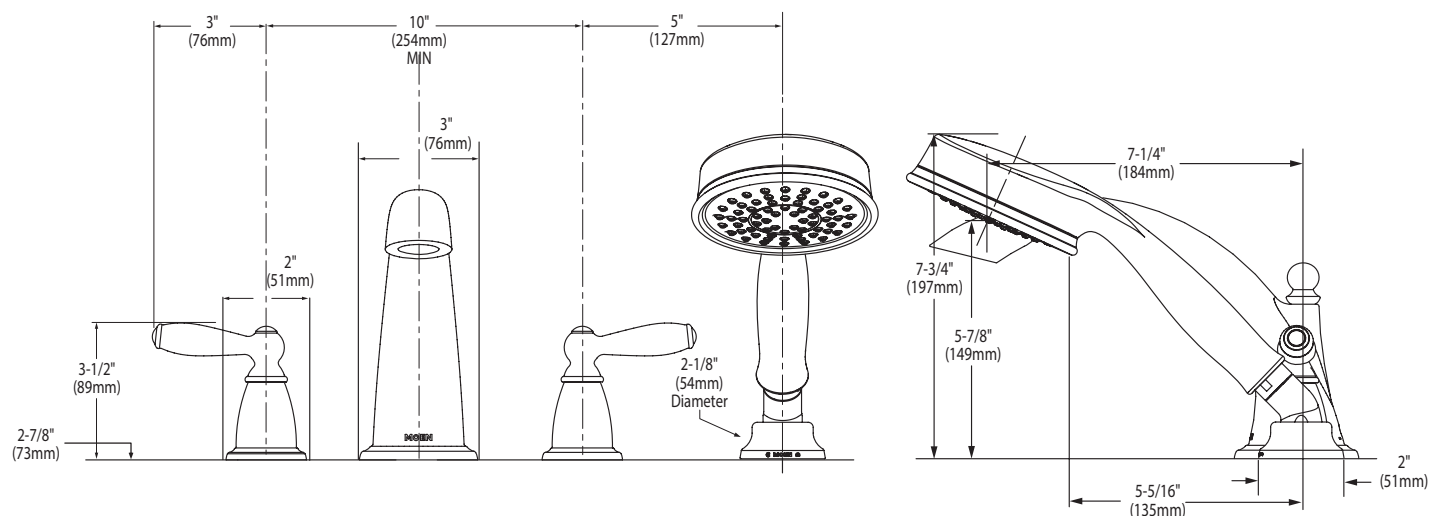
## BRANTFORD™ Two-Handle Roman Tub Faucet Trim w/Built In Diverter Valve

**Models:** T924 series

**Valves:** 9992, 9993, 9997, 9999



Handshower 3668EP



## CRITICAL DIMENSIONS

(DO NOT SCALE)



Buy it for looks. Buy it for life.®

## Specifications

### DESCRIPTION

- Metal construction with various finishes identified by suffix
- Includes hot and cold temperature indicators


### OPERATION

- Lever style handles
- Rotate hot side handle counterclockwise to open (clockwise to close)
- Rotate cold side handle clockwise to open (counterclockwise to close)

### FLOW

- Hand shower meets 2.5 gpm max (9.5 L/min)

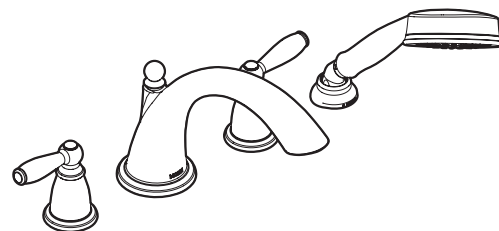
### STANDARDS

- Third party certified to ASME A112.18.1/CSA B-125.1, and all applicable requirements referenced therein
- **ADA**  for lever handles

### WARRANTY

- Lifetime limited warranty against leaks, drips and finish defects to the original homeowner
- 10 year limited warranty when used in a multifamily installation
- 5 year limited warranty when used in a commercial installation

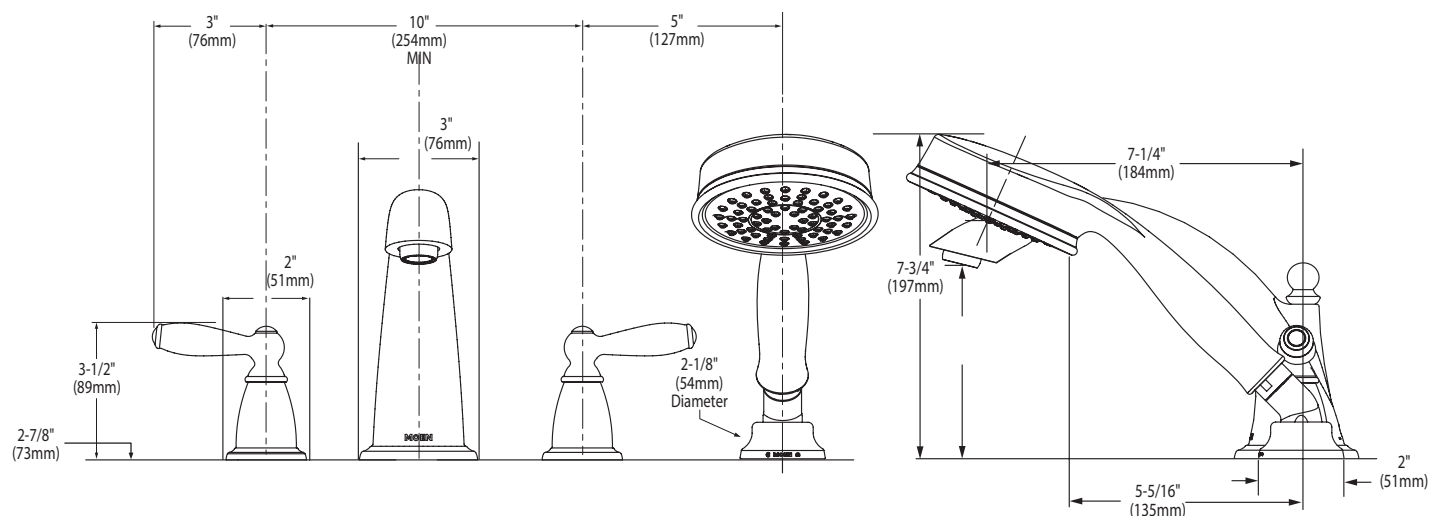
Visit [www.moen.com/support](http://www.moen.com/support) for complete details and limitations



### **BRANTFORD™** **Two-Handle Roman Tub Faucet** **Trim w/Built In Diverter Valve**

**Models:** T924 series

**Valves:** 9992, 9993, 9997, 9999



### **CRITICAL DIMENSIONS**

(DO NOT SCALE)



Buy it for looks. Buy it for life.®

## Specifications

### DESCRIPTION

- Metal construction
- Installs on 10" (254mm) centers minimum
- Designed to be installed on finished decks up to 2-5/8" (67mm)
- 24" quick connect hoses
- Integral 1/2" PEX connections
- Includes (2) 1/2" CPVC adapters
- Includes test plug
- 140715 kit available separately to connect to 1/2" cold expansion PEX

### OPERATION

- Can be installed with any Moen deck mounted roman tub trim kit
- Rotate hot side handle counterclockwise to open (clockwise to close) and the cold side handle clockwise to open (counterclockwise to close)

### FLOW

- Designed to deliver 13 gpm at 45 psi. (49L/min)

### CARTRIDGE

- Nonmetallic and stainless steel materials

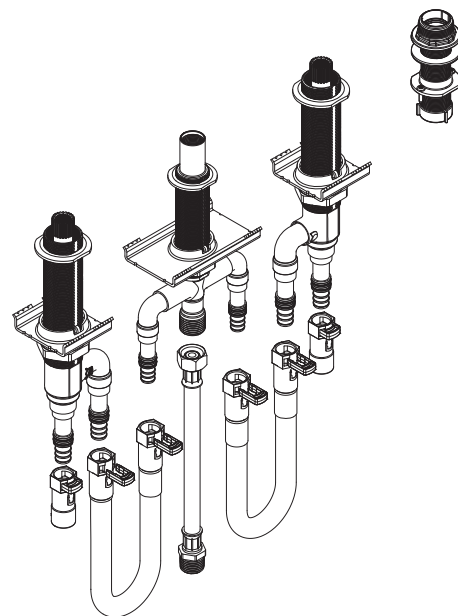
### STANDARDS

- Designed and manufactured to comply with the applicable requirements of: ASME A112.18.1/CSA B-125.1, ASTM F1807, CSA B137.5 for PEX, ASTM D2846, CSA B137.6 for CPVC and all applicable requirements referenced therein
- 1/2" PEX fittings compatible with PEX tubing manufactured to ASTM F877
- 1/2" CPVC fittings manufactured to ASTM D2846

### WARRANTY

- Lifetime limited warranty against leaks, drips and finish defects to the original consumer purchaser
- 5 year warranty if used in commercial installations

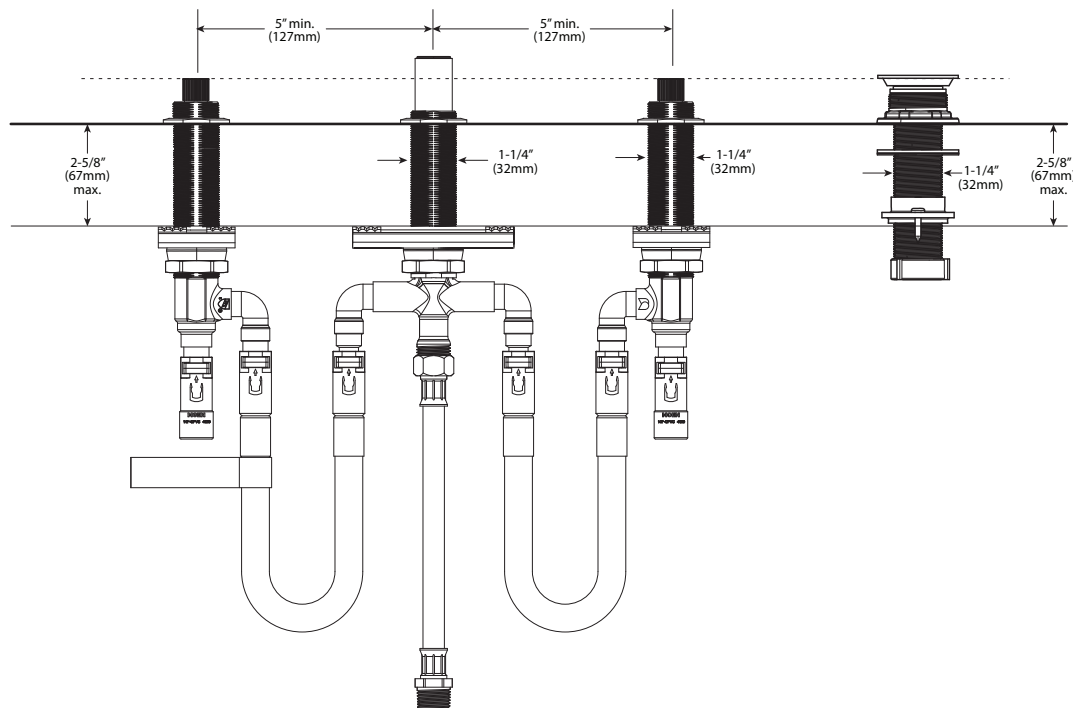
**NOTE:** Plumbing codes require this product to be used with a device conforming to ASSE.



Model: 9793

**Moen®**  
**Roman Tub High Flow**  
**Rough-In Valve Adjustable Type**

104465 Thermostatic mixing valve sold separately is certified to ASSE 1070 and CSA B-125.3



### CRITICAL DIMENSIONS

(DO NOT SCALE)