

www.nationalnail.com

Revised 12/10/07

NN
national nail corp.
more than just nails

CS58 CAP STAPLER OWNER'S MANUAL



• Operation • Maintenance • Safety • Warranty



PLEASE READ!

This manual contains important information about product safety.

TABLE OF CONTENTS

• Important Information	1
• Warnings	2
• Tool Specifications	5
• Loading the Tool	6
• Operating the Tool	7
• STINGER™ CS58 Schematic	9
• STINGER™ CS58 Parts List	10
• Maintenance and Storage	13
• Warranty	14
• Troubleshooting	15

IMPORTANT INFORMATION

Please take the time to read and understand the information contained in the Owner's Manual included with this product before operating or maintaining the **STINGER™ CS58** Cap Stapler.

Improper use of this tool could result in serious injury or even death. Most accidents occur because of the failure to observe basic safety rules and precautions. Basic safety precautions are outlined in the "Warnings" section of this manual.

This product is intended for securing housewrap and roofing felt only. Please do not use this pneumatic tool for applications other than those specified.

This manual should be available for anyone who plans to operate the tool.

WARNINGS



PERSONAL SAFETY ITEMS

- Do not use tool prior to reading the Owner's Manual.
- Always wear eye protection that conforms to ANSI requirements (Z87.1) and provides protection against flying particles both from the front and side. Eye protection should be worn by the operator and by others in the work area. Eye protection is required to protect against flying fasteners and debris that could possibly cause severe eye injury.
- The employer is responsible to enforce the use of eye protection equipment by the tool operator and all other personnel in the work area.
- To prevent accidental injuries:
 - Handle the tool with care
 - Always assume that the tool contains fasteners
 - Always disconnect the air hose from the **STINGER™ CS58** when:
 - loading staples and/or caps
 - performing inspection, maintenance or repair
 - clearing a staple or collated cap jam
 - the tool is not in use
 - leaving the work area
 - moving the **STINGER CS58** to another work location
 - handing the **STINGER CS58** to another person
 - storing the tool
 - Never point the tool toward yourself or anyone else
 - Never engage in horseplay
 - Never hold or carry the tool with a finger on the trigger
 - Never place a hand or any other part of the body in the fastener discharge area of the tool while the air supply is connected



WARNINGS

AIR SUPPLY AND CONNECTIONS

- Use only clean, regulated compressed air as a power source for this tool. Do not use bottle gases, combustible gases or oxygen as a power source for the tool as the tool may explode.
- Do not use air supply pressures that exceed 105 PSI.
- Do not exceed the recommended maximum operating air pressure as tool wear will be greatly increased. The air supply must be capable of maintaining the operating air pressure of the tool. Pressure drops in the air supply can reduce the tool's driving power.
- Use a pressure regulator and gauge to allow visual inspection of the air pressure being delivered to the tool.
- Use air hoses that have rated pressures of up to 150% of the maximum pressure that can be generated by the power source. The supply hose should contain fittings that will provide quick disconnecting from the male plug on the tool.
- Use quick connect fittings that allow the tool to be unhooked from the air supply quickly and easily.
- Do not use fittings that will not allow the tool to exhaust when the air supply is disconnected.

WARNINGS

OPERATION OF THE TOOL

- Never inspect, maintain, repair, adjust, clear a jam or store the tool with the air connected.
- Never use the tool in proximity of flammable gases or liquids, as some tools will create sparks that can be an ignition source for a fire or explosion.
- Always inspect the safety device for damage and proper operation, prior to operation.
- Never assume the tool is empty of fasteners.
- Never point the tool toward yourself or any other persons.
- Never cycle the tool unless it is in contact with the work-piece.
- Never use the tool as a hammer or wedging device or drop to the floor from any height.
- Always remove your finger from the trigger when pausing from cycling.
- Never tamper with the safety device or use the tool if the safety device is not functioning properly.
- Use only **5/8" STINGER StaplePac** cap fasteners with the **STINGER™ CS58** Cap Stapler. Never use any fasteners that are not specified for use in this tool. The CS58 holds 1 coil of plastic caps (200 caps) and 2 strips of staples (100 staples each).

TOOL SPECIFICATIONS

Operating pressure	95-105 psi
Weight	3.9 lb.
Nail capacity	200 staples (2-100 count strips)
Cap capacity	200 plastic collated caps (1 reel)
Air inlet	3/8 NPT
Fasteners	STINGER StaplePac (National Nail product number 0136360) Consists of 20 strips of 5/8" 20 gauge staples (100 staples per strip) and 10 reels of 1" diameter plastic collated caps (200 caps per reel).

LOADING THE TOOL *USE 5/8" STINGER STAPLEPAC CAP STAPLES ONLY*



- Disconnect air.



- Open the magazine cover by pushing the green cover release tab and lifting.



- Place cap reel in basket. Make sure the front end of the cap coil is placed over the cap guide area of the basket. Insert lead cap into the feed chute.



- Slide caps along the feed chute with fingers until they engage the cap feeder. Pull the cap feeder back and release to advance caps until the first cap is under the nose of the tool.

- Close the magazine cover.

- Depress the latch on the staple follower and pull back. Insert two staple strips. Slide staple follower in and secure.

- Plug into air source. Tool is ready to use.

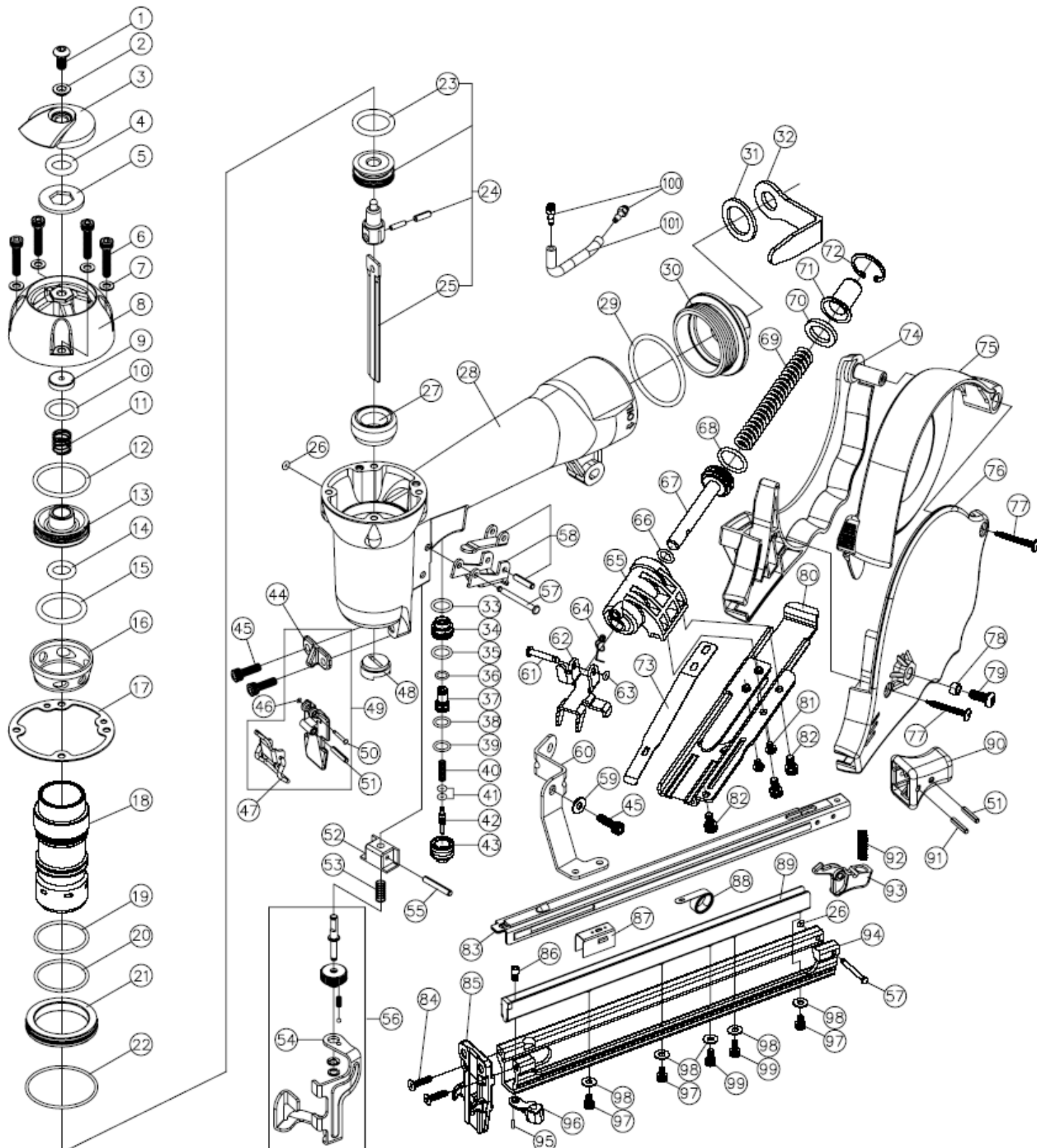
OPERATING THE TOOL

1. Do not use tool prior to reading the Owner's Manual.
2. Read warning label(s) on the tool.
3. Visually inspect the tool for worn or damaged parts.
4. Wear appropriate eye and ear protection.
5. Install a male pneumatic fitting into the end cap of the tool, ensuring that the fitting allows the tool to exhaust any air in the tool when the air hose is disconnected.
6. Add 2 drops of non-detergent, 20-weight oil into the male fitting.
7. Connect the air hose using a quick connect fitting to the tool, and check the air pressure reading on the regulator to ensure it does not exceed 105 PSI. Check the tool for any air leaks.
8. Place the tool, empty of fasteners, in operating position on a scrap work piece. Fully depress the safety and pull the trigger to verify that the tool cycles.
9. Disconnect the air hose from the tool when:
 - Loading staples and/or caps
 - Performing inspection, maintenance or repair
 - Clearing a staple or collated cap jam
 - The tool is not in use
 - Leaving the work area
 - Moving the tool to another work location
 - Handing the STINGER CS58 to another person
 - Storing the tool
10. Following recommended loading instructions, load the fasteners approved for use in the tool.

OPERATING THE TOOL

11. Cycle the tool on a scrap work piece to evaluate the depth of penetration by the fastener into the work piece.
12. To adjust the depth of penetration, regulate the air pressure at the regulator and/or disconnect the air hose, adjust the depth control screw, connect the air hose and cycle the tool on a scrap work piece to evaluate the adjustment.
13. Repeat Step 12 as needed to set the correct depth, using the minimum amount of air pressure to drive the fastener.

STINGER CS58 SCHEMATIC



STINGER CS58 PARTS LIST

Item No.	Ref No.	Description
136629	01	Screw
135851	02	Washer
136635	03	Exhaust Deflector
135853	04	O-Ring
135854	05	Washer
135855	06	Cap Screw
135856	07	Flat Washer
135857	08	Cap
♦ 136627	09	Exhaust Seal
♦ 136628	10	O-Ring
136630	11	Poppet Spring
♦ 135861	12	Poppet O-Ring
135862	13	Poppet
♦ 135863	14	Piston Stop O-Ring
♦ 135864	15	Cylinder Seal O-Ring
135865	16	Cylinder Spacer
♦ 135866	17	Gasket
135867	18	Cylinder
♦ 135900	19	O-Ring
♦ 135868	20	Cylinder O-Ring
135869	21	Cylinder Guide
♦ 135870	22	O-Ring
♦ 135871	23	Piston O-Ring
135943	24	Piston & Driver Assembly
135872	25	Driver Blade
♦ 136621	26	O-Ring
135874	27	Bumper
135875	28	Body
136664	29	O-Ring
135877	30	End Cap
135947	31	Washer
135948	32	Belt Clip
135878	33	O-Ring
135879	34	Trigger Valve (A)

STINGER CS58 PARTS LIST

	Item No.	Ref No.	Description
♦	135880	35	O-Ring
♦	135881	36	O-Ring
	135882	37	Trigger Valve (B)
♦	135883	38	O-Ring
♦	135884	39	O-Ring
	135885	40	Spring
♦	135886	41	O-Ring (2)
	135887	42	Plunger
	135888	43	Trigger Valve Housing
	135892	44	Stationary Front Plate
	135891	45	Screw
♦	135893	46	O-Ring
	135896	47	Latch Assembly
♦	135890	48	Return Seal
	135944	49	Front Plate Assembly
	136654	50	Pin
	135895	51	Pin
	135897	52	Safety Foot Guide
	136658	53	Spring
	135899	54	Safety
	136653	55	Pin
	135945	56	Safety Assembly
	136623	57	Step Pin (2)
	135946	58	Trigger Assembly
	136611	59	Washer
	135906	60	Bracket
	135907	61	Pin
	135908	62	Cap Feeder
♦	135901	63	O-Ring
	135909	64	Spring
	135910	65	Feed Cylinder
♦	135911	66	O-Ring
	135912	67	Feed Piston
♦	135913	68	O-Ring

♦ Parts included in AS-97323 O-Ring and Seal Kit

STINGER CS58 PARTS LIST

Item No.	Ref No.	Description
135914	69	Spring
135915	70	Piston Stop
135916	71	Feed Piston Cover
135917	72	Retaining Ring
135918	73	Hold Down Spring
135919	74	Magazine Right
135920	75	Magazine Cover
135921	76	Magazine Left
135922	77	Screw
135923	78	Nut
135924	79	Screw
135925	80	Feed Chute
135926	81	Screw
136608	82	Screw
135928	83	Magazine Cover
135929	84	Screw
135930	85	Wear Plate
135931	86	Screw
135932	87	Pusher
135933	88	Negator Spring
135949	89	Track
135934	90	Latch Cover
135935	91	Pin
135936	92	Spring
135937	93	Latch
135938	94	Magazine
135950	95	Pin
135939	96	Feed Chute Bracket
135940	97	Screw
135941	98	Washer
135942	99	Screw
136645	100	Barb Fitting (2)
♦ 135904	101	Tubing

MAINTANANCE & STORAGE

MAINTENANCE

1. Disconnect the air hose from the tool when performing inspections, maintenance or repairs.
2. Use air line lubricators. If lubricators are not available, or if hose lengths exceed 10 feet, add 2 drops of non-detergent 20-weight oil daily into the air inlet of the tool.
3. Whenever repairs or replacement of parts inside the body occur, check the piston "O" ring for adequate grease lubrication.
4. Never use any parts other than genuine STINGER replacement parts.
5. Periodically clean the magazine and nose of the tool with a mild solvent.

STORAGE

1. Disconnect the air hose when storing the tool.
2. Never store the tool in cold weather environments for any duration of time as any frost or ice formation in the tool will cause tool failures.
3. For prolonged storage, add 2 drops of oil to the air inlet of the tool prior to discontinuing use. Also clean the exterior of the tool with a mild solvent.

WARRANTY

WARRANTY ITEMS

1. Warranty for cap assemblies, castings and housing castings is one year.
2. Warranty for bumpers, "O" rings, driver blades and piston rings is not applicable as they are normal wearing parts whose life is dependant on application.
3. Warranty for all other parts is 90 days.

WARRANTY CONDITIONS

1. The beginning date in which the warranty is in force is the date of purchase.
2. The warranty is not transferable.
3. The warranty is voided by any of the following:
 - a. Abuse, misuse, or damage to the tool
 - b. Use of parts other than genuine STINGER parts
 - c. Use of fasteners not designated for use in the tool
 - d. Modifications to the tool that alter the original function or intent of use of the tool by anyone other than National Nail
4. National Nail retains the right to replace or repair any warranty items it deems necessary.

TROUBLESHOOTING

Disconnect the air hose from the tool when performing inspections, maintenance or repairs.

PROBLEM:

CORRECTION:

- | | |
|---|---|
| 1. Tool operates, but no fasteners are driven. | <ul style="list-style-type: none">• Check magazine for proper fasteners. Fasteners should slide freely in and out of the magazine. |
| 2. Cap leaks air. | <ul style="list-style-type: none">• Tighten cap screws. |
| 3. Fasteners jam in nose of tool. | <ul style="list-style-type: none">• Remove fasteners from magazine.• Open Quick-Clear™ nose (if applicable), remove jammed fastener and close latch.• Load tool. |
| 4. Weak drive | <ul style="list-style-type: none">• Check to make sure there is adequate air supply. |
| 5. Skipping fasteners | <ul style="list-style-type: none">• Replace bumper if worn.• Use only recommended fastener sizes.• Replace magazine if worn.• Check air supply as it may be too low. |
| 6. Fasteners will not drive completely into work piece. | <ul style="list-style-type: none">• Increase air pressure (do not exceed 120 PSI). |

Please contact Inside Sales for technical support if you have any other problems: 800-746-5659

Contact Inside Sales at
800-746-5659
to place an order for
replacement parts.

Visit our website at
www.nationalnail.com
to learn more about our products
and services.



2964 Clydon SW, Grand Rapids MI 49519, USA
Phone: 800-968-6245 Fax: 616-531-5970

www.nationalnail.com

