

## Casmir - Single Handle Pull-out Kitchen Faucet



- \* Includes Zinc Deck Plate for 1 or 3 Hole Installation
- \* 14" High and 7-11/16" Long Spout, Zinc Handle, Zinc Body
- \* 360° Swing Spout
- \* Matching Plastic Two Function Pull-out Spray Head
- \* Copper Waterway Construction with 1/2" -14 NPSM Connection
- \* "Quick Connect" Type 60" Nylon Flexible Hose
- \* Premium Grade Ceramic Cartridge (Type G)
- \* Flow Rate: 1.8GPM @ 60PSI
- \* 100% Pressure System Tested
- \* Lifetime Limited Warranty; 5 year warranty from date of purchase for Commercial users.

|                      |  |
|----------------------|--|
| Project / Job Name   |  |
| Architect / Engineer |  |
| Contractor           |  |
| Model                |  |
| Quantity             |  |

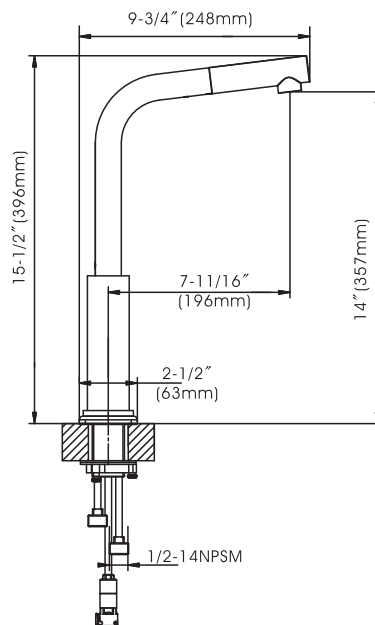
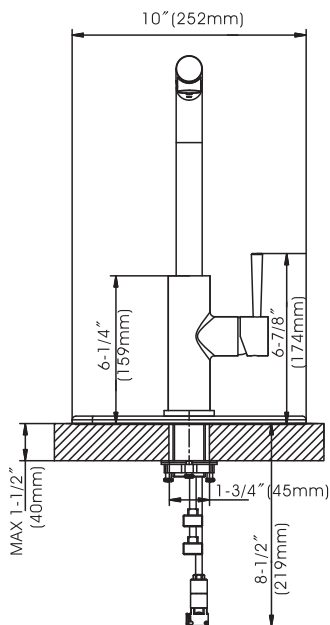
### Model No. :

☐ 192-6468 (CH)  
(Shown Model)

☐ 192-6469 (BN *Spotless PVD*)

☐ 192-7160 (MG)

☐ 192-7161 (MB)



Cartridge (Type G)



#### Product Compliance:

- ASME A112.18.1 / CSA B125.1
- NSF 61 - Section 9
- NSF 372 (Low Lead Content)
- ANSI A117.1 (ADA)

Compass Manufacturing International LLC

www.cmiproduet.com

6702 Enterprise Drive, Louisville, Kentucky 40214

Toll Free Number: 800-626-3525

## Casmir - Single Handle Pull-out Kitchen Faucet



- \* Includes Zinc Deck Plate for 1 or 3 Hole Installation
- \* 14" High and 7-11/16" Long Spout, Zinc Handle, Zinc Body
- \* 360° Swing Spout
- \* Matching Plastic Two Function Pull-out Spray Head
- \* Copper Waterway Construction with 1/2" -14 NPSM Connection
- \* "Quick Connect" Type 60" Nylon Flexible Hose
- \* Premium Grade Ceramic Cartridge (Type G)
- \* Flow Rate: 1.8GPM @ 60PSI
- \* 100% Pressure System Tested
- \* Lifetime Limited Warranty; 5 year warranty from date of purchase for Commercial users.

|                      |  |
|----------------------|--|
| Project / Job Name   |  |
| Architect / Engineer |  |
| Contractor           |  |
| Model                |  |
| Quantity             |  |

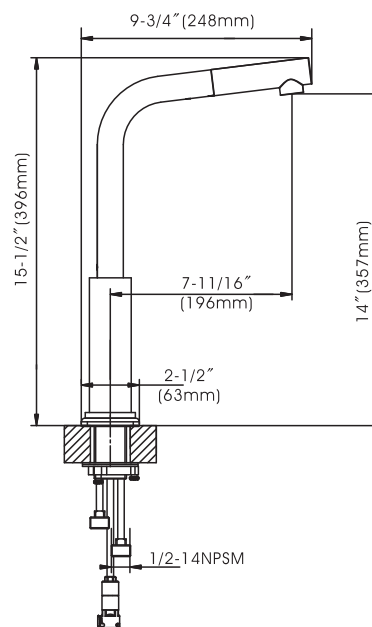
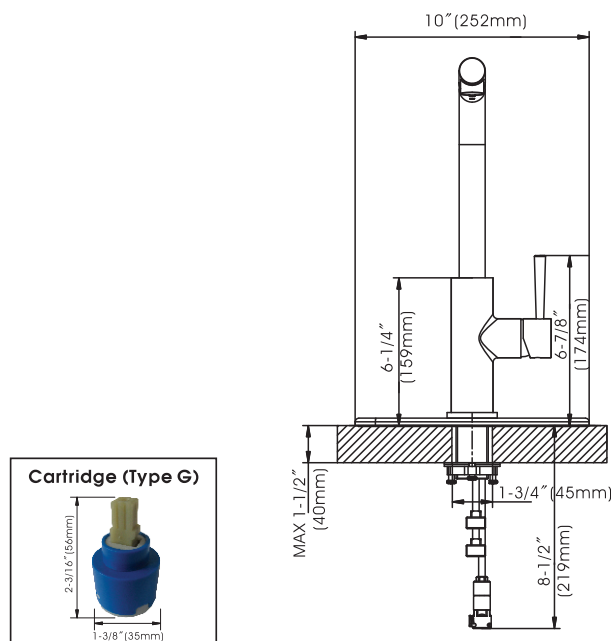
### Model No. :

☐ 192-6468 (CH)

☐ 192-6469 (BN *Spotless PVD*)  
(Shown Model)

☐ 192-7160 (MG)

☐ 192-7161 (MB)



Cartridge (Type G)



#### Product Compliance:

- ASME A112.18.1 / CSA B125.1
- NSF 61 - Section 9
- NSF 372 (Low Lead Content)
- ANSI A117.1 (ADA)

Compass Manufacturing International LLC

www.cmiprodukt.com

6702 Enterprise Drive, Louisville, Kentucky 40214

Toll Free Number: 800-626-3525

## Casmir - Single Handle Pull-out Kitchen Faucet

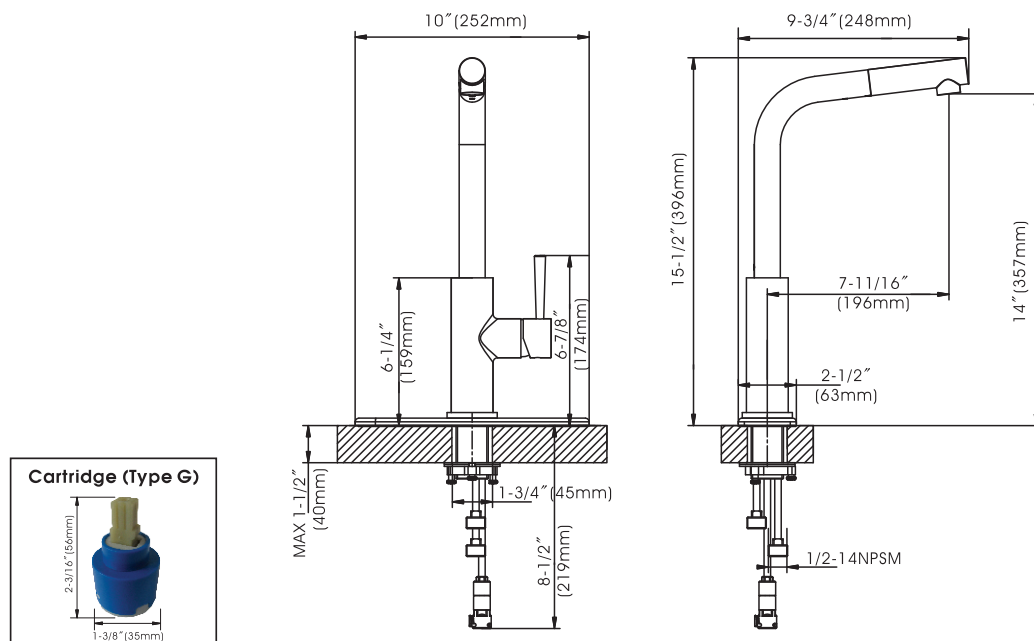


- \* Includes Zinc Deck Plate for 1 or 3 Hole Installation
- \* 14" High and 7-11/16" Long Spout, Zinc Handle, Zinc Body
- \* 360° Swing Spout
- \* Matching Plastic Two Function Pull-out Spray Head
- \* Copper Waterway Construction with 1/2" -14 NPSM Connection
- \* "Quick Connect" Type 60" Nylon Flexible Hose
- \* Premium Grade Ceramic Cartridge (Type G)
- \* Flow Rate: 1.8GPM @ 60PSI
- \* 100% Pressure System Tested
- \* Lifetime Limited Warranty; 5 year warranty from date of purchase for Commercial users.

|                      |  |
|----------------------|--|
| Project / Job Name   |  |
| Architect / Engineer |  |
| Contractor           |  |
| Model                |  |
| Quantity             |  |

### Model No. :

☐ 192-6468 (CH)
 ☐ 192-6469 (BN *Spotless PVD*)
 ☐ 192-7160 (MG) **(Shown Model)**
☐ 192-7161 (MB)



**Product Compliance:**

- ASME A112.18.1 / CSA B125.1
- NSF 61 - Section 9
- NSF 372 (Low Lead Content)
- ANSI A117.1 (ADA)

**Compass Manufacturing International LLC**

www.cmiprodukt.com

6702 Enterprise Drive, Louisville, Kentucky 40214

Toll Free Number: 800-626-3525

## Casmir - Single Handle Pull-out Kitchen Faucet



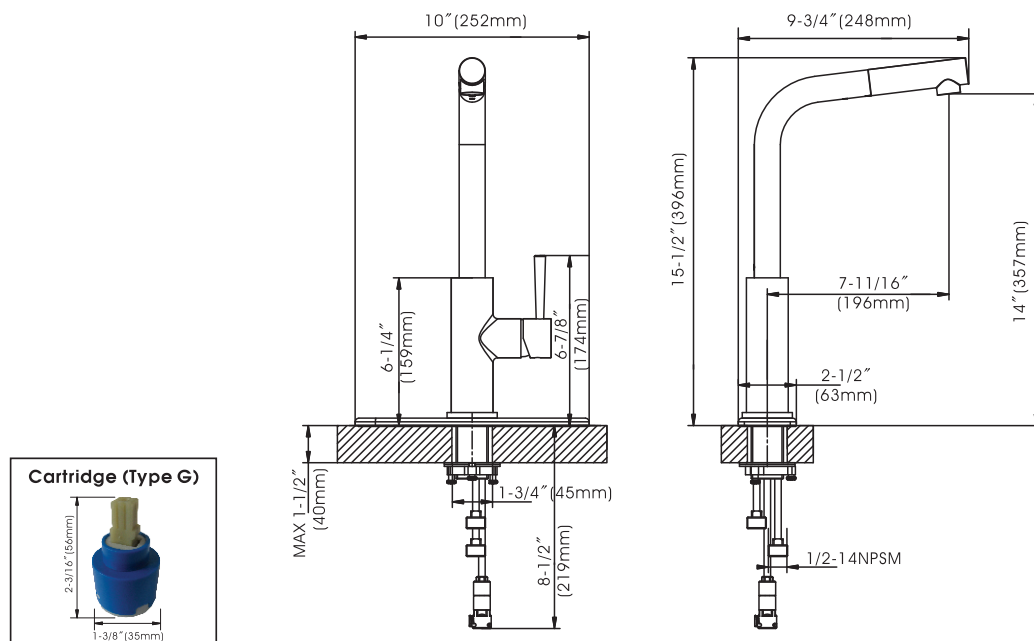
- \* Includes Zinc Deck Plate for 1 or 3 Hole Installation
- \* 14" High and 7-11/16" Long Spout, Zinc Handle, Zinc Body
- \* 360° Swing Spout
- \* Matching Plastic Two Function Pull-out Spray Head
- \* Copper Waterway Construction with 1/2" -14 NPSM Connection
- \* "Quick Connect" Type 60" Nylon Flexible Hose
- \* Premium Grade Ceramic Cartridge (Type G)
- \* Flow Rate: 1.8GPM @ 60PSI
- \* 100% Pressure System Tested
- \* Lifetime Limited Warranty; 5 year warranty from date of purchase for Commercial users.

|                      |  |
|----------------------|--|
| Project / Job Name   |  |
| Architect / Engineer |  |
| Contractor           |  |
| Model                |  |
| Quantity             |  |

### Model No. :

☐ 192-6468 (CH)
 ☐ 192-6469 (BN *Spotless PVD*)
 ☐ 192-7160 (MG)
 ☐ 192-7161 (MB)

(Shown Model)



**Product Compliance:**

- ASME A112.18.1 / CSA B125.1
- NSF 61 - Section 9
- NSF 372 (Low Lead Content)
- ANSI A117.1 (ADA)

Compass Manufacturing International LLC

www.cmiproduct.com

6702 Enterprise Drive, Louisville, Kentucky 40214

Toll Free Number: 800-626-3525

# Casmir - Single Handle Pull-out Kitchen Faucet

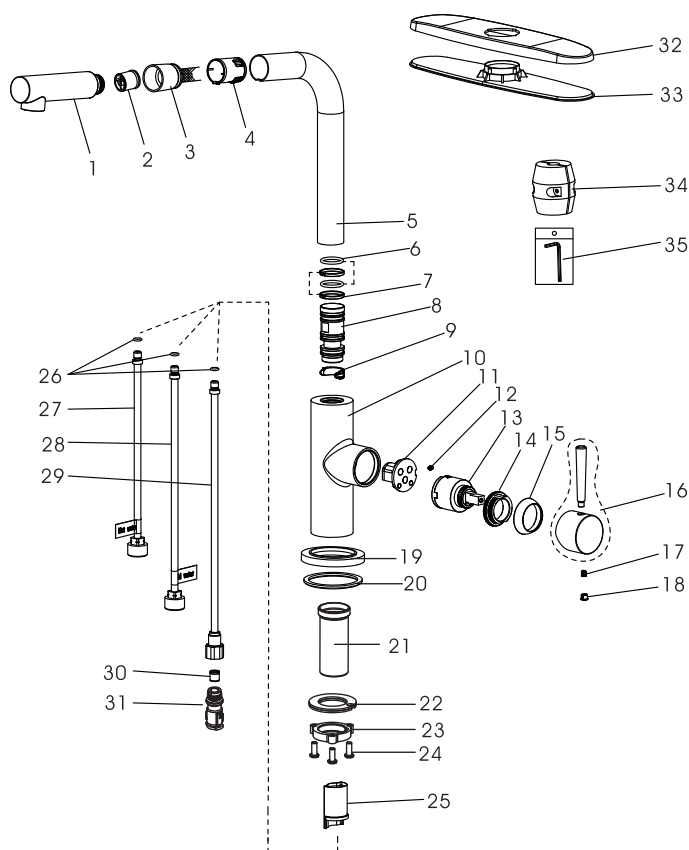
## Model No. :

192-6468 (Polished Chrome)

192-6469 (Brushed Nickel **Spotless PVD**)

192-7160 (Matte Gold)

192-7161 (Matte Black)



| No. | Part Name              | Material               |
|-----|------------------------|------------------------|
| 1   | Spray Head             | Plastic                |
| 2   | Check Valve            | Plastic                |
| 3   | Pull-out Hose          | Nylon                  |
| 4   | Hose Guide             | Plastic                |
| 5   | Spout                  | Stainless Steel        |
| 6   | O-ring                 | Rubber                 |
| 7   | Ring                   | Plastic                |
| 8   | Connector              | Brass                  |
| 9   | Retainer               | Plastic                |
| 10  | Body                   | Zinc                   |
| 11  | Cartridge Base         | Brass                  |
| 12  | Screw                  | Stainless Steel        |
| 13  | Cartridge              | Ceramic                |
| 14  | Cartridge Lock Nut     | Brass                  |
| 15  | Trim Cap               | Brass                  |
| 16  | Handle                 | Zinc                   |
| 17  | Set Screw              | Stainless Steel        |
| 18  | Index                  | Rubber                 |
| 19  | Base                   | Zinc                   |
| 20  | O-ring                 | Rubber                 |
| 21  | Shank                  | Stainless Steel        |
| 22  | Clamp                  | Stainless Steel+Rubber |
| 23  | Lock Nut               | Zinc                   |
| 24  | Screw                  | Stainless Steel        |
| 25  | Protective Sleeve      | Plastic                |
| 26  | O-ring                 | Rubber                 |
| 27  | Copper Tube (Hot)      | Copper                 |
| 28  | Copper Tube (Cold)     | Copper                 |
| 29  | Outlet Tube            | Copper                 |
| 30  | Stop Valve             | Plastic                |
| 31  | Quick Connect Assembly | Plastic                |
| 32  | Deck Plate             | Zinc                   |
| 33  | Gasket                 | Plastic                |
| 34  | Weight                 | Steel+Plastic          |
| 35  | Allen Wrench           | Steel                  |

Cartridge (Type G)



Technical Support: [warranty@cmipproduct.com](mailto:warranty@cmipproduct.com)  
Hour of Operation: Mon - Fri 8:30 a.m - 5:00 p.m. EST