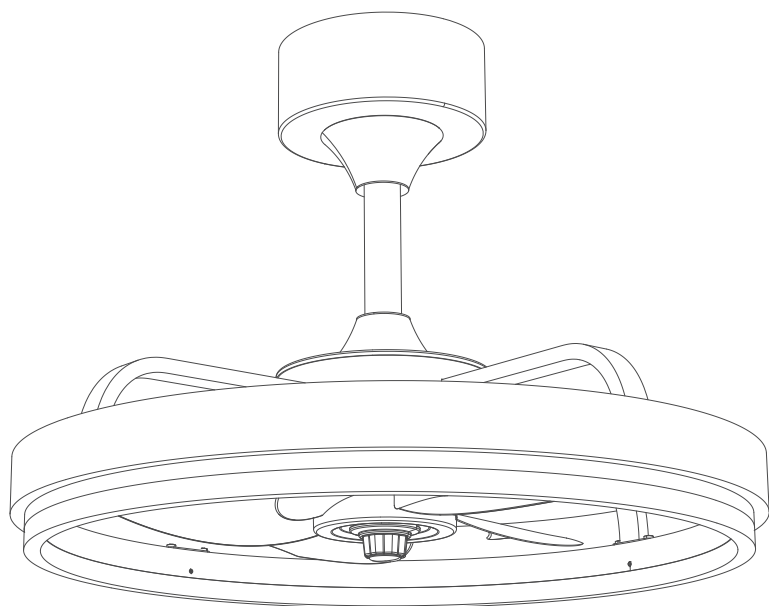


# USER MANUAL

## CEILING FAN LIGHT



**Important:** Please read and understand this manual before any assembly. Before assembling this product, please ensure that all parts are in place. Compare the details with the product display presentation. If you have any questions, don't hesitate to contact us.

## Remote control instructions:

1. Install AAA batteries (Battery not included) . If the remote control is not used for a long time, please take out the battery to prevent battery damage .
2. The remote control function is shown below .



- Link fan light (Normally, the remote control and fan light are already linked and can be used directly . If there is no link, follow the steps :  
1. Turn off the main power supply to the fan light .  
2. Turn on the main power of the fan light and press and hold this button within 5 seconds .  
3. If you hear a beep, the remote is connected to the fan light . Try using a remote control to control the fan light .)
- Turn off the lights and fans together
  - Turn on the light / Turn off the light
  - Turn off the fan
  - Lighten the lights/dim the lights
  - The light switches to night light mode
  - Turn down / up the color temperature of the light
  - Positive fan rotation / Fan reversal
  - Color temperature switch(white light, warm light, natural light)
  - Different fan speeds  
1 gear has the least wind , 6 gear has the most wind.
  - Timing function 1H/2H

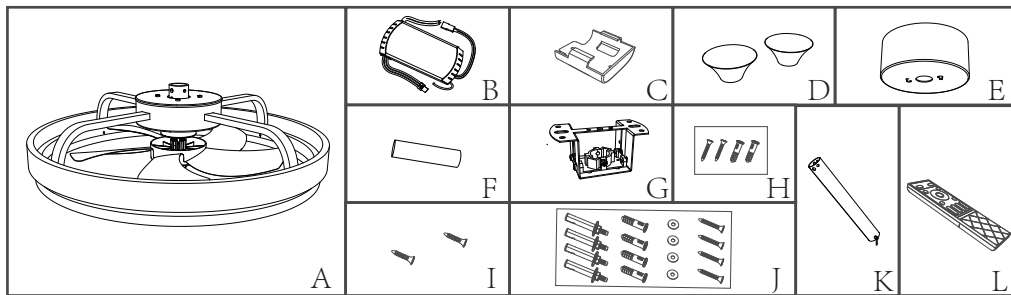
## Mobile phone APP control instructions:

### App Operation



1. APP download: Scan the QR code and select the APP version to download.
2. Pairing: After turning off the power of the fan light, then turn on the power, click the "PairCode" button on the APP within 5 seconds, and hear the beep, then the pairing is successful.
3. After the pairing is complete, you can control the device with the APP.

**Note: APP connection method is Bluetooth.**

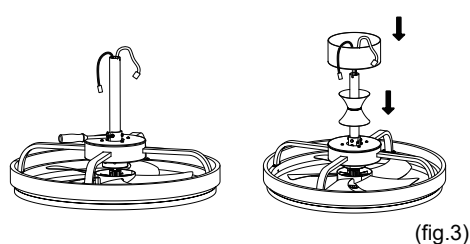
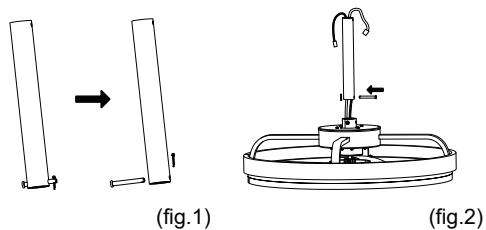


## Product assembly

Step 1: Pull the latch out of the steeve(fig.1)

Step 2: Thread the cover on the boom in turn as shown.(fig.2)

Step 3: As shown in the figure, thread the line through the pipe to the position of the suction box, install the pipe in the corresponding slot, and then lock with the latch.(fig.3)



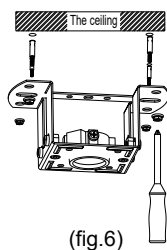
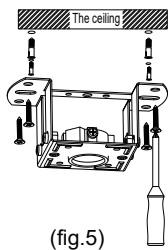
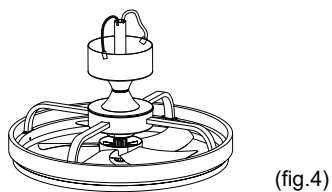
Step 4: Tighten the screws on the side with a screwdriver, then you will remove the horn and ceiling box.(fig.4)

Step 5 : A:Wooden ceiling

If you have a wooden ceiling wood screws with a plastic expansion anchor.(fig.5)

B:Concrete ceiling

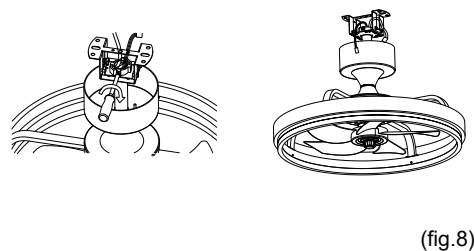
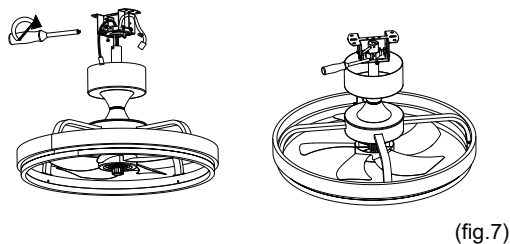
If you have a concrete ceiling, use screws with lock washers.(fig.6)



## Installation

Step 1: Loosen the screws on the side of the center hole of the hanger, then insert the assembled ceiling fan into it, then insert the latch into the boom, and rotate the ceiling fan to insert the latch into the slot.fig.7)

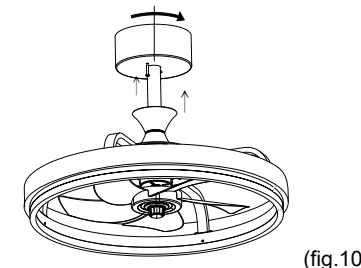
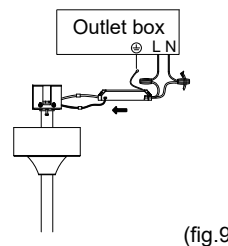
Step 2:Tighten the previously loosened screws with the new screwdriver.(fig.8)



Step 3: Wiring input (fig.9)

- Connect the black live wire marked 'L' on the receiver to the live wire (typically black) on the socket box.
- Connect the white neutral wire marked 'N' on the receiver to the neutral wire (typically white) on the socket box.
- Connect the ground wire (bare wire) from the base of the ceiling fan base with the ground wire (bare wire) of the socket box.

Step 4: After connecting the wire, stick the hanging head cover on the hanging head. Align the screw with the hole on the cover). Then lock screw. Slide the trumpet-shaped cover to the top. Twist the bottom of the fan blade counterclockwise and lock it into place to make it firm and safe. (fig.10)



## Preparations:

1.Prepare the required tools.

2.Turn off the switch.

3.Put all the parts in order.

Star-head Screwdriver	
Wire-stripping Pliers	
Stepladder	
Electrical Tape	

## Specifications

Product Name	Ceiling Fan Light	Item Size	20.5in*15in
Input Voltage	110V	LED	30-60W
Dimensions	10*10ft-15*15ft	Valid Remote Distance	20M
Battery Type	AAA*2	Rotating Speed(rpm)	555-956r/min
Reversible	Yes	Fan Timing	1H/2H