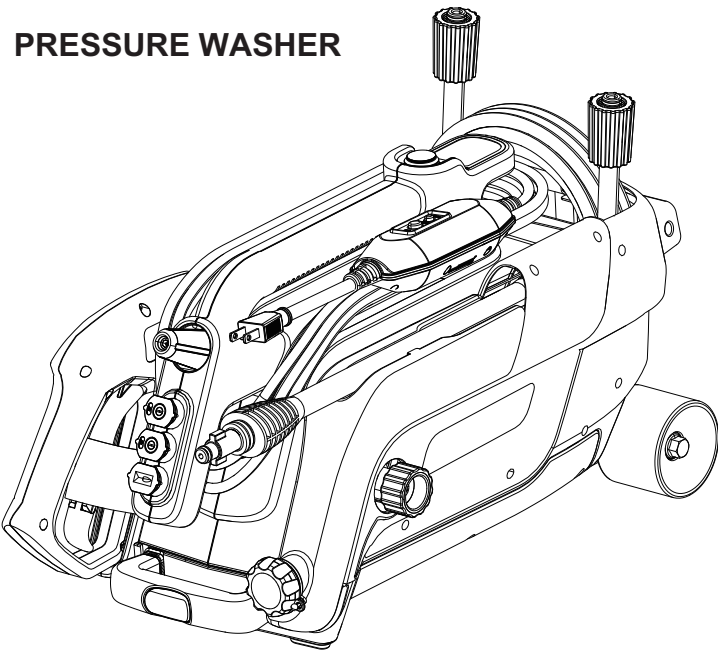
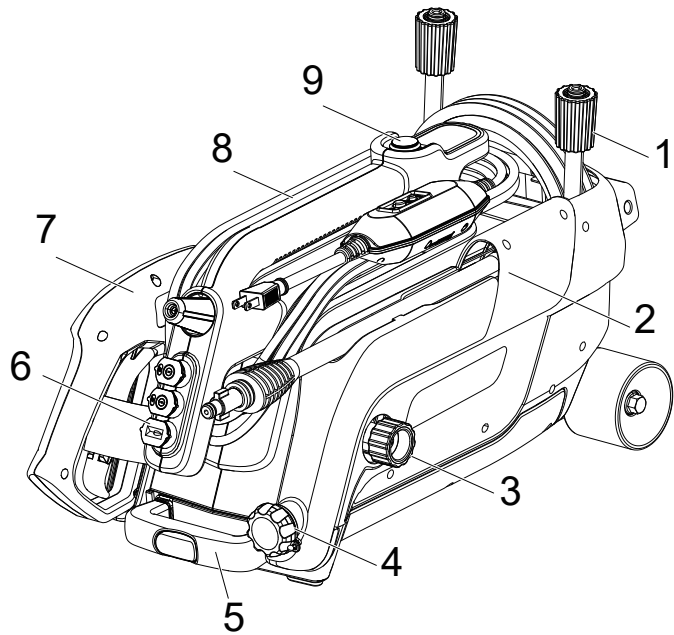


PRESSURE WASHER



Depending on the model purchased, packaging will contain different accessories and parts. Refer to the package for more details.

KNOW YOUR MACHINE



1. High pressure hose

2. Spray wand holder

3. Water inlet

4. Detergent tank

5. Telescopic handle

6. Spray tip

7. Spray gun holder
8. Power cord

9. power switch

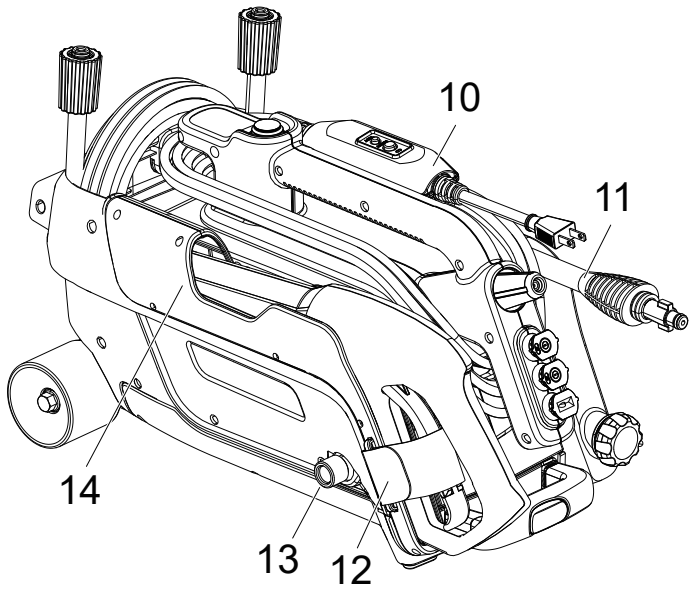
10. GFCI

11. Spray wand

12. Velcro

13. Water outlet

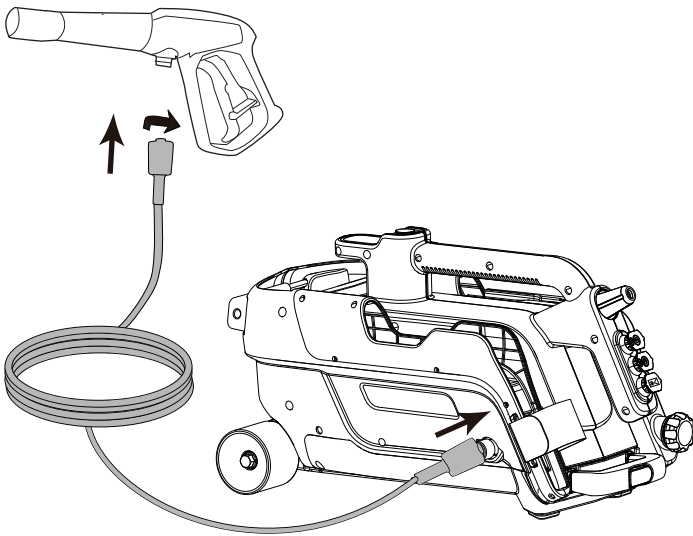
14. Spray gun holder



1

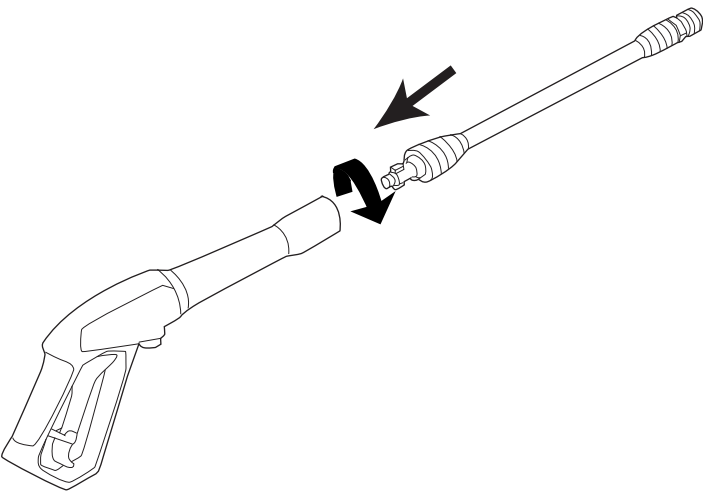
Installation  
Install the high pressure hose

2

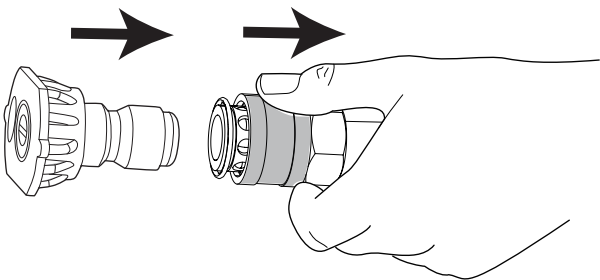


4

Install the spray wand



Install the spray tip



5

Spray tip type

Spray tip type	Spray Pattern	Uses	Surfaces*
25°		versatile washing, removing dirt without damage	fences, decks, wood, siding
40°		delicate cleaning tasks, suitable for car surfaces	delicate surfaces, cars, windows, patio furniture.
SOAP		applies cleaning solutions	surfaces that require soap
		powerful pinpoint for very intense cleaning	metal or concrete; DO NOT use on wood

greenworks®



Europe  
www.greenworkstools.eu

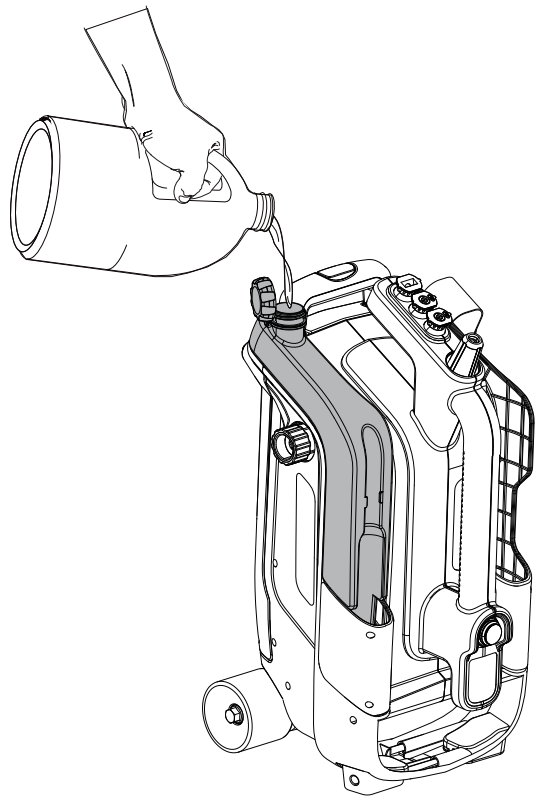


USA  
www.greenworkstools.com



Canada  
www.greenworkstools.ca

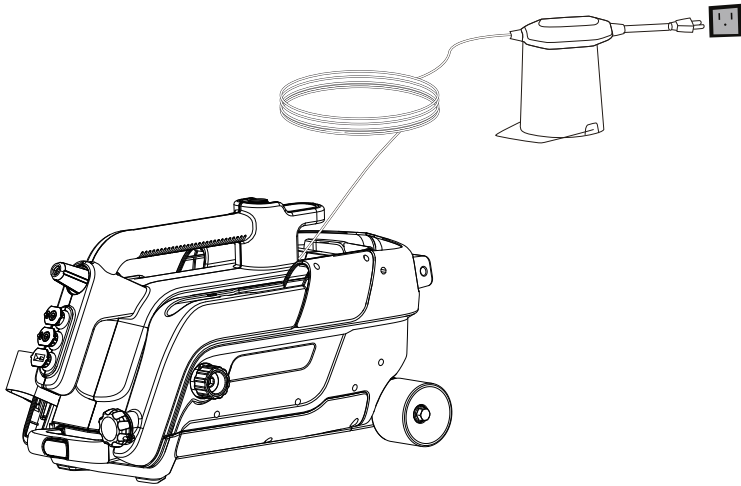
Add detergent



7

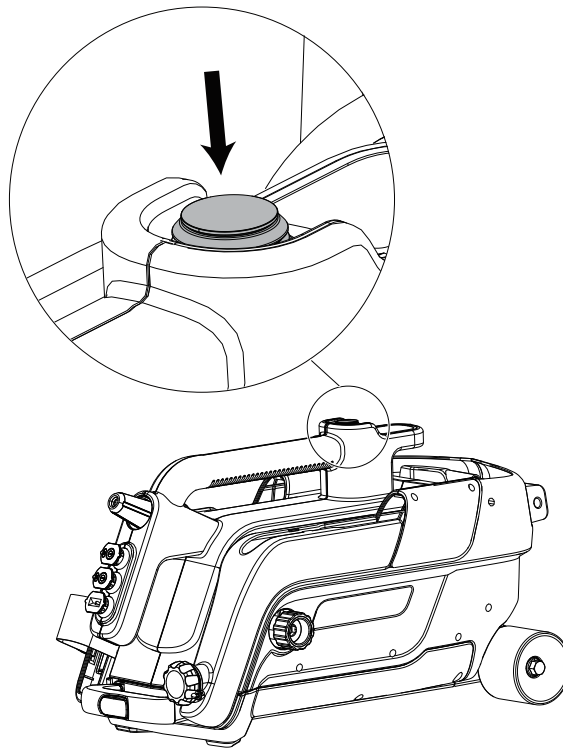
**OPERATION**  
Connect the machine to the power supply

8



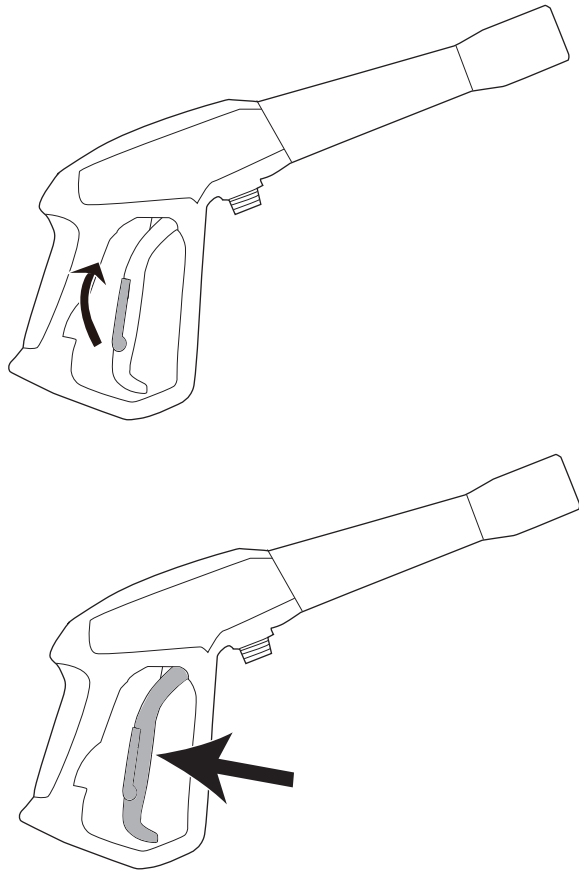
**Start the machine**  
*WARNING: Do not use the product in vertical position.  
As shown in the figure, use the product in horizontal position.*

9

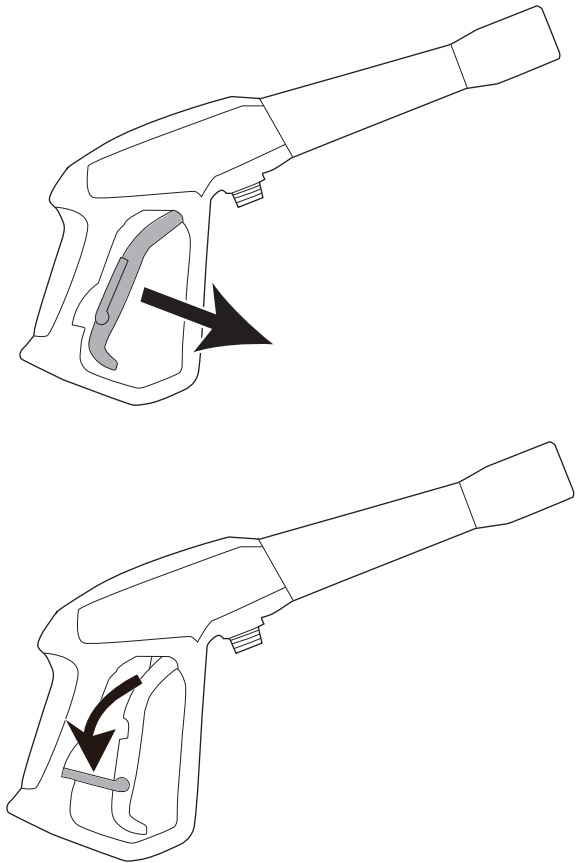


**Start the spray gun**

10



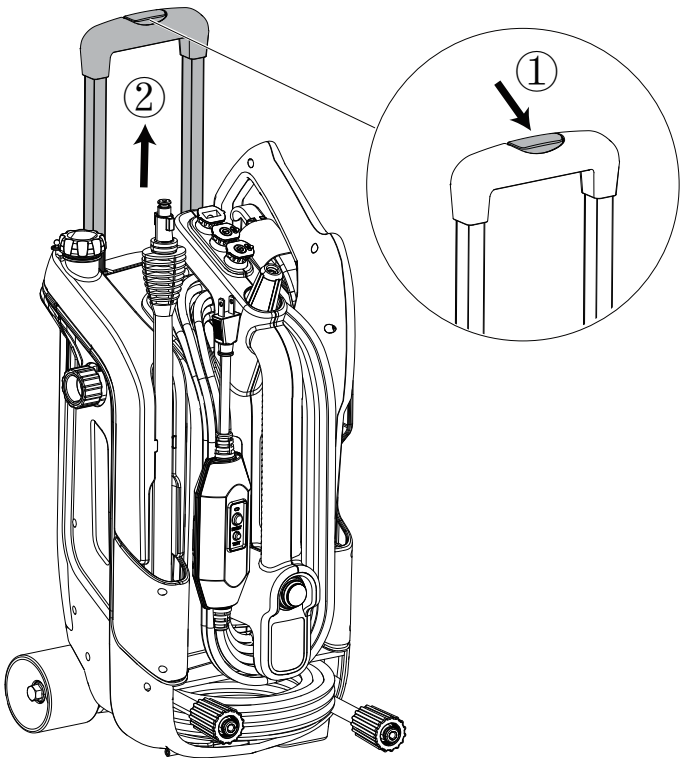
**Stop the spray gun**



11

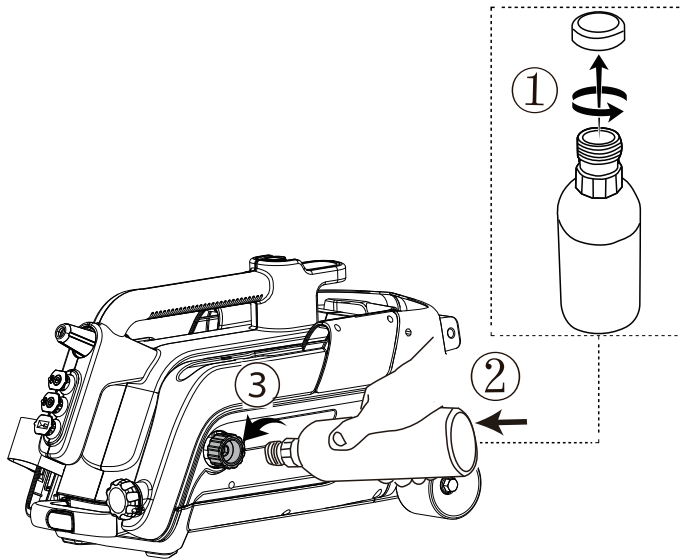
**Use the telescopic handle**  
*NOTE: The telescopic handle can help you easily  
move the product.*

12



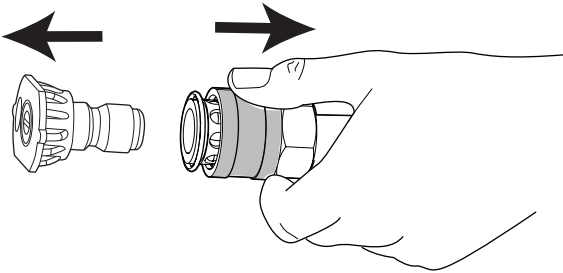
**MAINTENANCE**  
**Protect the pump**  
*NOTE: Pump Saver protects pressure washer pumps  
against freezing to save cold weather storage.*

13



**Remove the spray tip**  
*NOTE: Always stop the machine before removing  
the spray tip.*

14



**Clean the spray tip**

