

Product Features

- Vitreous China
- No faucet holes
- Concealed front overflow
- Supplied with cut-out template
- Faucet and drain not included
- Rear-oriented drain hole location for ease of drain installation
- Oval shaped basin
- Universally Accessible; compliant with the Americans with Disabilities Act (ADA) Standards; see spec sheet for installation details



Technical Information

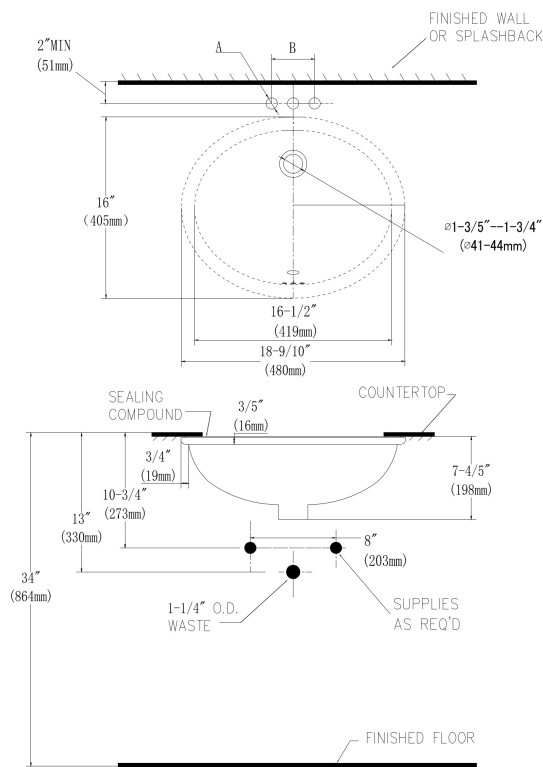
Configuration	Undermount
Height	7.8 in/ 198 mm
Width	18.9 in/ 480 mm
Depth	15.9 in/ 404 mm
Inside Basin Depth	5.8 in/ 147 mm
Shipping Weight	21 lbs/ 9.5 kgs

Available Colors

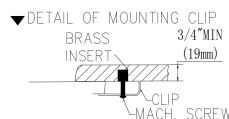
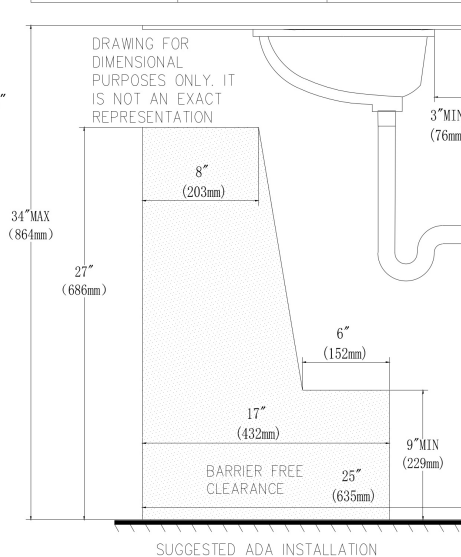
- White

Code/ Standards

- Meets and exceed ASME A112.19.2/CSA B45.1
- IAPMO(cUPC ®)
- ADA Guideline
- CA Prop65



FITTING	A	B
CENTERSET	1-1/16" (27mm)	4" (102mm)
SPREAD	1-1/4" (32mm)	8" (203mm)



NOTES: All dimensions are in inches and millimeter. Illustrations may not be drawn to scale.

IMPORTANT: Dimensions of fixtures are nominal and may vary within the range of tolerances established by ANSI standard A112.19.2. These measurements are subject to change or cancellation. No responsibility is assumed for use superseded or voided