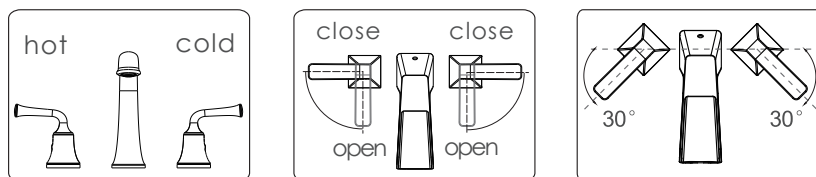


Models:	Finish:
· 2004011	· Matte Black
· 2004031	· Brushed Nickel
· 2004041	· Brushed Gold
· 2004051	· Gunmetal

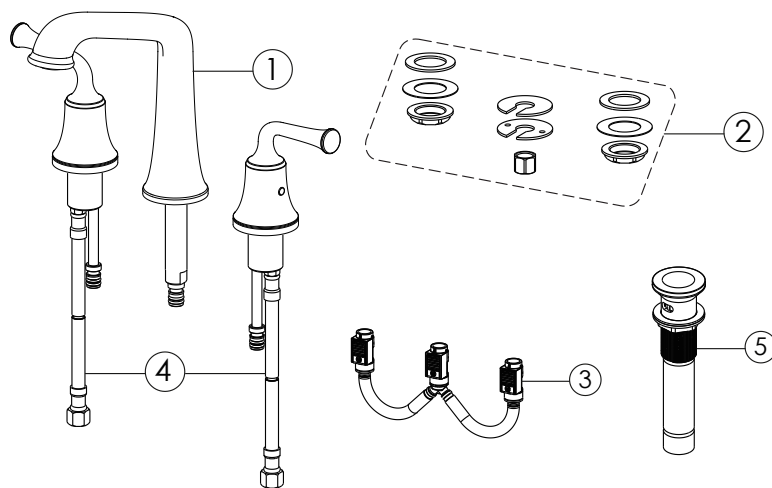
Application Instruction

Gradually pull the handle, it will be more advangeous to protect the cartridge.

NOTICE: In order to have the perfect condition of the water flow, please turn both handles to 30 degree angle slowly so that the air inside the tubes can be clean when you use this product at the 1st time.



Standard Part List



NO.	Part Name	Quantity
1	Body Assy	1
2	Fitting Assy	1
3	Outlet Hose	1
4	Intlet Hose	1
5	Pop-up	1

· Every once in a while, please rinse the faucet with lukewarm soapwater, and wipe it clean with a soft duster cloth.
Please avoid any abrasive cleaners, steel wools, or corrosive chemicals.

BEFORE INSTALLATION

- To insure proper installation, please read the following instructions carefully.
- Please make sure that the water supply has been shut off at the stop valve.
- NEWATER reserves the right to update product without notice.

Installation Steps

1 Installation Requirements

1. Please confirm the three holes on the basin are through holes as shown from the instructions before install. First, remove all fixing sets from the ② fixed group, and then put the ① body through the hole on the basin, assemble all ② fixing sets to the ① body.

2

2. Use hand to screw up the ② locknut, then use install tool for fixing strengthen. And then connect the ③ outlet hose as shown.

3

3. Connect the ④ inlet hose as shown, take note of the "Red" & "Blue" index from the handle, "Red" for connecting to the valve for supply hot water, and "Blue" for connecting to the valve for supply cold water.

4

4. Install the ⑤ pop-up.