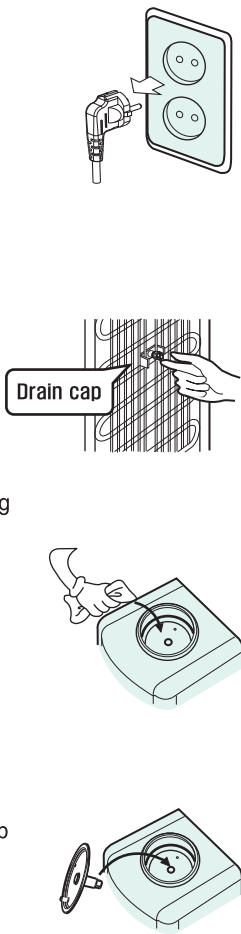


Cleaning Instructions

- 1. Disconnect power supply cord.
- 2. Open hot faucet until water is room temperature.
- ⚠️ CAUTION: Water from hot faucet is extremely hot and may cause burns.
- 3. Remove water bottle from cooler.
- 4. Open faucet to drain cold water.
- 5. Open drain cap located on the back(or bottom) of the cooler condenser to drain all water in hot tank. Close when hot tank is empty.
- 6. Remove No-Spill Kit (if installed) and baffle parts in cold water tank.
- 7. Both faucets can be disassembled by turning them counterclockwise.
- 8. Wear disposable gloves when cleaning cooler.
- 9. Wash the faucets, No-Spill Kit (if installed), baffle, drip tray and grid with mild soap and water. Then, rinse them with clean water immediately.
- 10. Clean inside cold water tank with a clean dish towel. NOTE: Do not use bleach or any cleaning agents containing bleach or chlorine.
- 11. Assemble drip tray and grid, both faucets, No-Spill Kit (if installed), and baffle.
- 12. Pour clean water into cold water tank and open cold faucet to flush the entire cooler. - Repeat this step at least three times.
- 13. Invert water bottle on top of cooler and open hot faucet in order to fill up hot water tank.(Hot & Cold model only)
- 14. Open drain cap located on the condenser (or bottom) and drain water in hot tank.(Hot & Cold model only) - Repeat this step at least three times and close the drain cap at the end.
- 15. Clean exterior of the cooler with a clean towel.
- 16. The black static condenser on the rear of the cooler should be cleaned with a small stiff non-wire brush.
- 17. Follow Installation Procedure to operate the cooler.



Troubleshooting

| Symptom                        | Solution Checklist   |
|--------------------------------|--|
| No Cold Water and No Hot Water | <ul style="list-style-type: none"><li>☞ Check that the cooler is plugged in the "ON" position of hot water switch.</li><li>☞ Check the fuse - Replace if necessary.</li><li>☞ Check water in bottle.</li><li>☞ Check faucets' operation.</li></ul>   |
| No Cold Water                  | <ul style="list-style-type: none"><li>☞ Check cold water thermostat.</li><li>☞ Wait for water to be refrigerated before dispensing.</li><li>☞ Check ventilation of the condenser - Ensure adequate condenser air circulation. Place cooler at least 4"(10cm) from wall.</li><li>☞ Check baffle - Reinstall if necessary.</li><li>☞ Check for a refrigeration leak.</li></ul> |
| No Hot Water                   | <ul style="list-style-type: none"><li>☞ Wait for water to be heated before dspensing.</li><li>☞ Check that hot water switch is in the "ON" position.</li><li>☞ Check wires and connectors.</li><li>☞ Check heat limiter &amp; control.</li></ul>   |
| Unit Runs Noisy                | <ul style="list-style-type: none"><li>☞ Ensure that cooler is on flat surface.</li><li>☞ Move the cooler away from other appliances.</li><li>☞ Check for vibration at refrigeration line.</li><li>☞ Check compressor.</li></ul>  |
| Water Leaking                  | <ul style="list-style-type: none"><li>☞ Check that the cold water tank is not overfilled.</li><li>☞ Check for the any leaks in the bottle.</li><li>☞ Check hot water drain cap.</li><li>☞ Check for loose faucet or damaged faucet gasket.</li></ul>   |

AQUVERSE WATER COOLERS

USER'S MANUAL

MODEL. Hot & Cold : 3H(B11A), 5H(B17A0)

Thank you for purchasing our product(s). Please read this user's manual thoroughly for using the water coolers safely and conveniently.

Contents

General Guidelines ..... 2

Installation Procedure ..... 3

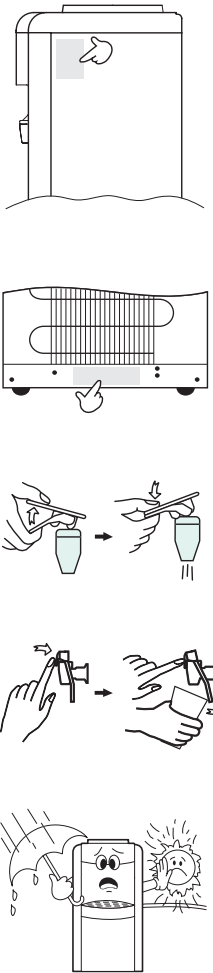
Cleaning Instructions ..... 5

Troubleshooting ..... 6

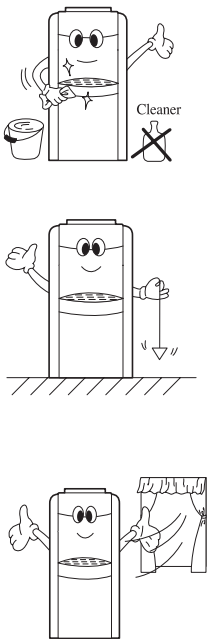


General Guidelines

- 1. Inspect the carton and cooler for evidence of rough handling and concealed damage. Damage should be filed with carrier.
- 2. Read and follow all directions to prevent damage to the cooler and to the user.
- 3. Use only water. Do not use for storing coffee, tea or other beverages.
- 4. Be sure the electric supply matches to the cooler. Check out the cooler's voltage by the specifications on the cooler. NOTE: The appliance must be positioned so that the plug is accessible. The water cooler is intended to be plugged into a receptacle of the ground fault circuit interrupting type.
- 5. Regular cleaning & sanitizing is advised to ensure satisfactory water quality and will help to keep the cooler running efficiently and economically. See "Cleaning Instructions" section.
- 6. Periodically remove dirt and lint from the condenser on the back of the cooler.
- 7. Place cooler within reach of a suitable grounded electrical outlet.
- 8. Water from hot faucet will be extremely hot and may scald. NOTE: Child proof faucets can be made available. The cooler is difficult for children to use, but easy for adults to.(Contact your agent)
- 9. Do not use the water faucets as handles to carry the cooler. NOTE: This part of the cooler may break and cause leaks if pulled by force.
- 10. The recommended placement of the cooler is indoors. Keep away from direct sunlight and excessive moisture.

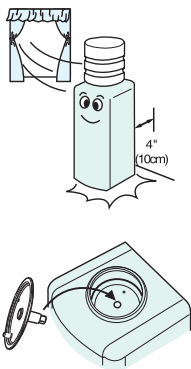


- 11. The manufacturer accepts no liability resulting from any alteration, or modification of this device. ⚠️ WARNING: Disassembling cooler may cause electric shock.
- 12. Do not use bleach or any cleaning agents that may contain bleach or chlorine.
- 13. The water bottle is heavy. NOTE: The water bottle filled would be 20kg(44lbs). It is highly recommended that seniors, children, patients do not lift up the water bottle to invert.
- 14. If a gas leak occurs, please open windows for ventilation and contact your agent for immediate service.
- 15. Drain all water before storing the cooler for extended periods of disuse.
- 16. Any modifications to this device should be performed by a certified professional.
- 17. A cup dispenser may be installed by using the mounting holes located near the top of the left and right sides of the cooler. The cup dispenser comes equipped with a mounting bracket and screws.(Contact your agent)

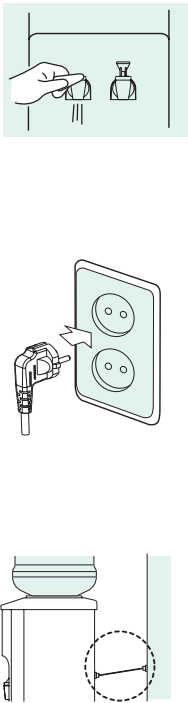


Installation Procedure

- 1. Check the power supply with the cooler data plate to assure proper electrical service.
- 2. Determine the best location for installation considering customer preference, electrical outlet, water use, and if applicable, drain locations.
- 3. The cooler should be located at least 4"(10cm) from the wall to ensure adequate condenser air circulation. Be sure that the cooler is on a flat and stable surface.
- 4. Check that the baffle is placed properly inside the cold water tank before inverting water bottle on top of cooler. NOTE: Specially designed No-Spill Kit can be installed by user's request.



- 5. Invert the water bottle and place on top of the cooler to fill the reservoir. NOTE: Turn the bottle as if pouring, direct the neck of the bottle into the reservoir so it settles properly on the cooler. Wipe off any water which may have splashed.
- 6. Open hot faucet until water flows freely.(Hot & Cold model only) NOTE: On models with a hot tank, failure to fill the hot tank with water before turning on hot water switch, can cause physical damage to the cooler.
- 7. Connect power supply cord. NOTE: Cold water is automatically operating upon connecting the power cord.
- ⚠️ CAUTION: Serious damage could result if incorrect power supply is used.
- 8. Place the hot water switch in "ON" position.(Hot & Cold model only) NOTE: Allow cooler to operate about 45 minutes for cold water and about 30 minutes for hot water before dispensing.
- 9. In order to prevent falling down of the cooler, it is necessary that the back of cooler be fixed to the wall by provided string.



CAUTION

- 1. If the power supply cord is damaged, it must be replaced by the manufacturer or its service agent in order to avoid any hazards.
- 2. When connecting the power, do not use the multiple power connecting socket.
- 3. Using irregular voltage may cause a fire.
- 4. Children should be supervised to ensure that they do not play with the appliance.
- 5. This appliance is not intended for use by persons (including children) with reduced physical, sensory or mental capabilities, or lack of experience and knowledge, unless they have been given supervision or instruction concerning use of the appliance by a person responsible for their safety.