

1
Ensure all components are complete and undamaged before installation.



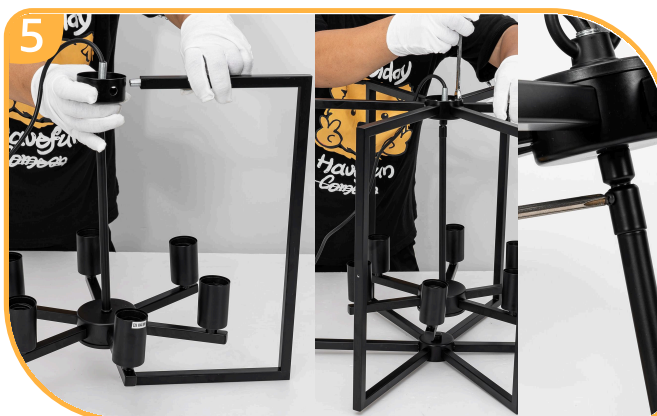
2
Secure the socket and tighten the lamp arms firmly with a wrench.



3
Connect wires by polarity, twist wire nuts tightly, and fasten the junction box cover with flat nuts.



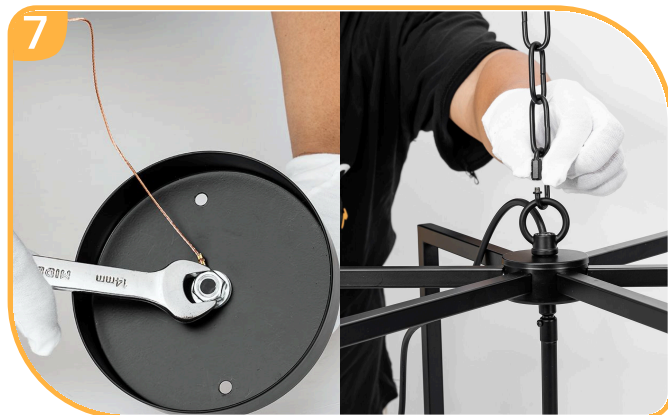
4
Run the main wire through the 11.5×250mm extension rod, then through the bracket with the sloped ceiling adapter.



5
Secure the outer frame to the $\phi 60 \times 35$ mm bracket as shown. Tighten the screws on the swing arms.



6
Fix arcs onto the frame. Connect them with links and secure with screws.



7
Suspend the chandelier with the chain.



8
Power On and Add Bulbs

Installation Manual