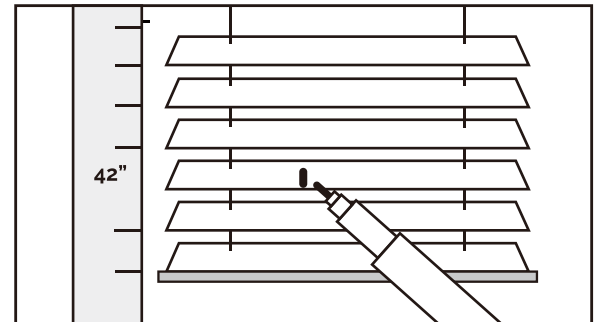
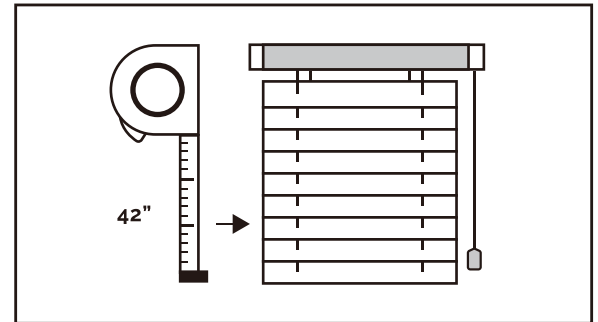
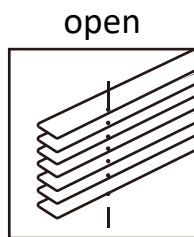
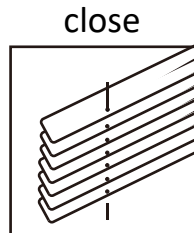
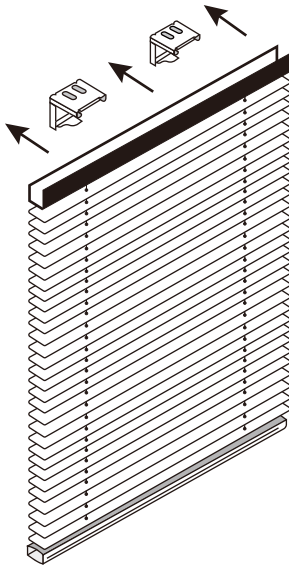


# HOW TO: Shorten the Blinds (Length)

## 1

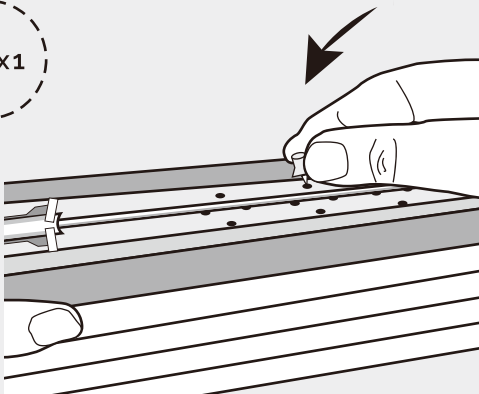
Install the blind in the brackets, then lower the blind fully and rotate the slats to open position. Measure the desired length and make a mark on the last slat.



**\*\*Example: The desired blind length is 42"**

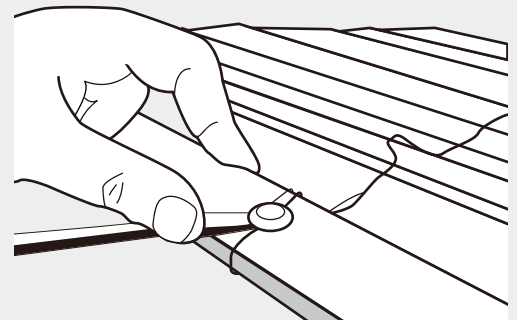
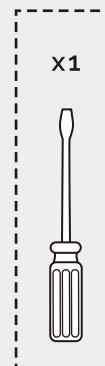
## 2

Uninstall the blind and pull the blind to about 20" long. Take a regular household pin and insert it into one of the spring box holes to lock the spring tension. Ensure the spring tension is securely fixed.



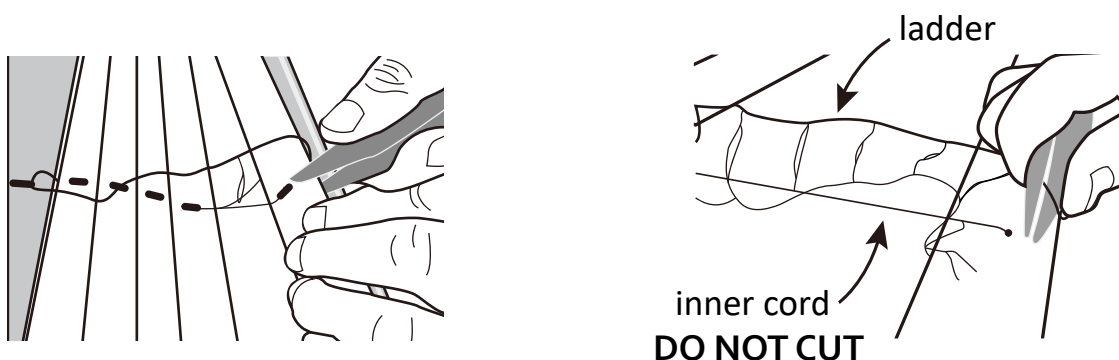
## 3

Remove the bottom-rail buttons, use a flat head screwdriver to pop the button off.



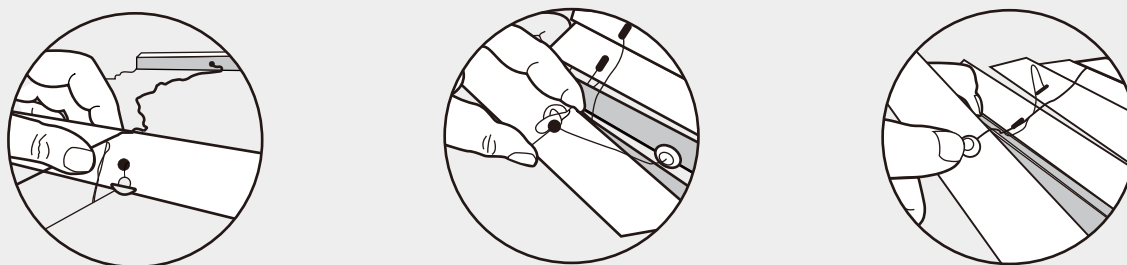
4

Carefully cut the slats through the holes (including the marked slat) to remove the slats from the blind. Then cut ONLY the outer ladder string. (DO NOT TO CUT THE INNER CORD OR THE BLIND WILL BE BROKEN) leaving one ladder to insert back into the bottom-rail.



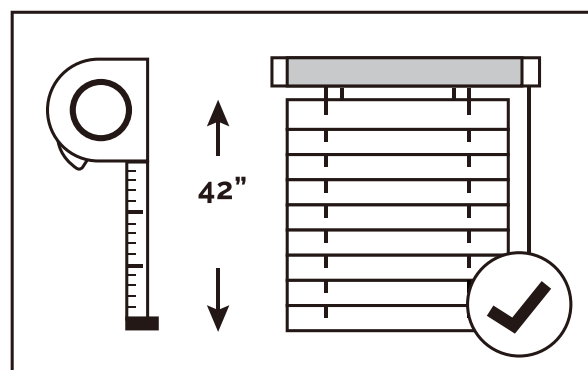
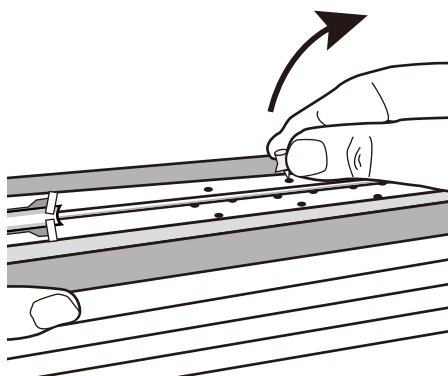
5

With the one empty ladder, twist the ladder string and insert into the bottom-rail hole and replace the buttons.



6

Ensure the bottom-rail buttons are secured. Remove the pin from the spring box. The blind is now shortened to your desired length and can be reinstalled into the brackets.



**\*\*Note:**

This list is for your reference for shorten the blinds. The maximum amount of slats that may be removed. Removing more than noted will result in failure of your cordless blinds

**\*\*IMPORTANT NOTICE:**

Altering blinds will void warranty

Item	Orig. Length of Item (in)	Max. quantity of Slats Can be taken off (pcs)	Est. Min. Length after slats taken (in)
1" Blinds	42"	12	31.5"
	64"	20	46.7"
2" Blinds	72"	11	53.8"
2.5" Blinds	72"	8	54.6"