

Majestic - 4 PC Roman Tub With Hand-held Shower



- * 5-3/16" High and 6-11/16" Long One Piece Solid Cast Brass Spout, Zinc Handle
- * Matching Plastic Hand Held Shower
- * Brass Waterway Construction with 1/2" -14 NPSM Connection
- * 72" Flexible Stainless Steel Hose
- * 1/4 Turn Premium Grade High Flow Rate Ceramic Cartridges (Type K)
- * Spout Flow Rate: 18.0GPM @ 80PSI
- * Hand-held Shower Flow Rate: 2.5GPM @ 80PSI
- * 100% Pressure System Tested
- * Lifetime Limited Warranty; 5 year warranty from date of purchase for Commercial users.

Project / Job Name	
Architect / Engineer	
Contractor	
Model	
Quantity	

Model No. :



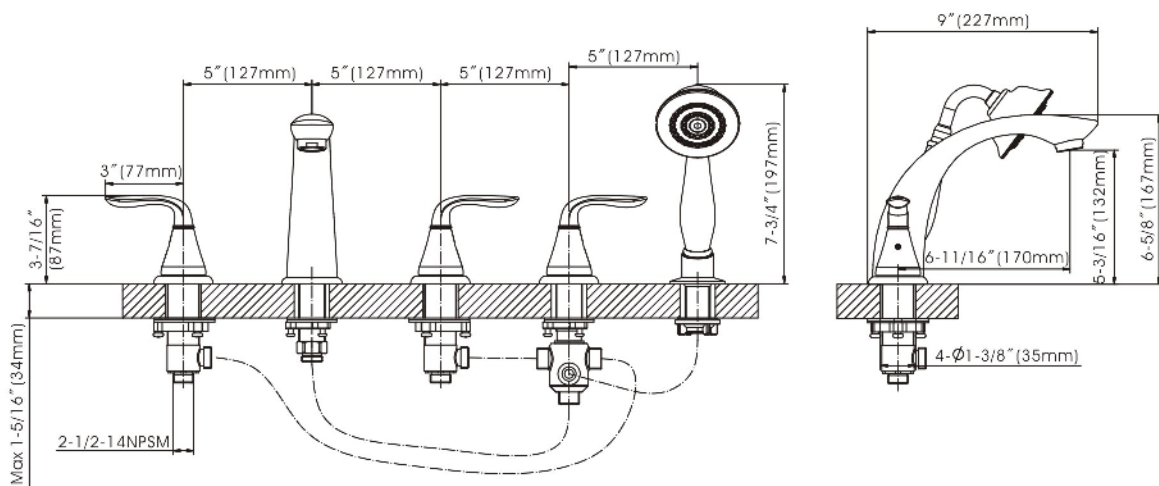
211-6620 (CH)
(Shown Model)



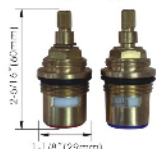
211-6621 (BN *Spotless PVD*)



211-6622 (ORB)



Cartridge (Type K)



Product Compliance:

- ASME A112.18.1 / CSA B125.1
- ANSI A117.1 (ADA)

Majestic - 4 PC Roman Tub With Hand-held Shower



- * 5-3/16" High and 6-11/16" Long One Piece Solid Cast Brass Spout, Zinc Handle
- * Matching Plastic Hand Held Shower
- * Brass Waterway Construction with 1/2" -14 NPSM Connection
- * 72" Flexible Stainless Steel Hose
- * 1/4 Turn Premium Grade High Flow Rate Ceramic Cartridges (Type K)
- * Spout Flow Rate: 18.0GPM @ 80PSI
- * Hand-held Shower Flow Rate: 2.5GPM @ 80PSI
- * 100% Pressure System Tested
- * Lifetime Limited Warranty; 5 year warranty from date of purchase for Commercial users.

Project / Job Name	
Architect / Engineer	
Contractor	
Model	
Quantity	

Model No. :



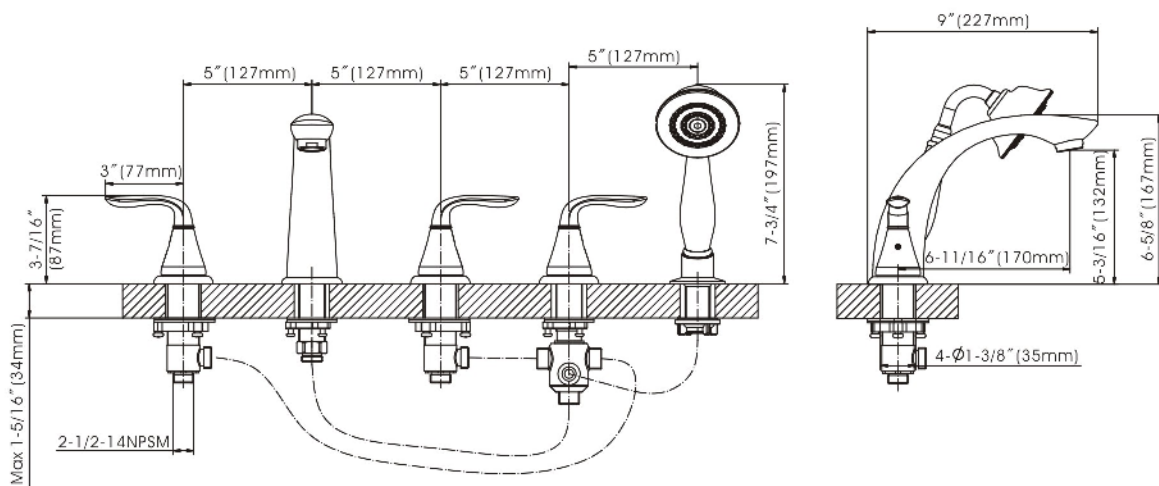
211-6620 (CH)



211-6621 (BN **Spotless PVD**)
(Shown Model)



211-6622 (ORB)



Cartridge (Type K)



Product Compliance:

- ASME A112.18.1 / CSA B125.1
- ANSI A117.1 (ADA)

Majestic - 4 PC Roman Tub With Hand-held Shower



- * 5-3/16" High and 6-11/16" Long One Piece Solid Cast Brass Spout, Zinc Handle
- * Matching Plastic Hand Held Shower
- * Brass Waterway Construction with 1/2" -14 NPSM Connection
- * 72" Flexible Stainless Steel Hose
- * 1/4 Turn Premium Grade High Flow Rate Ceramic Cartridges (Type K)
- * Spout Flow Rate: 18.0GPM @ 80PSI
- * Hand-held Shower Flow Rate: 2.5GPM @ 80PSI
- * 100% Pressure System Tested
- * Lifetime Limited Warranty; 5 year warranty from date of purchase for Commercial users.

Project / Job Name	
Architect / Engineer	
Contractor	
Model	
Quantity	

Model No. :



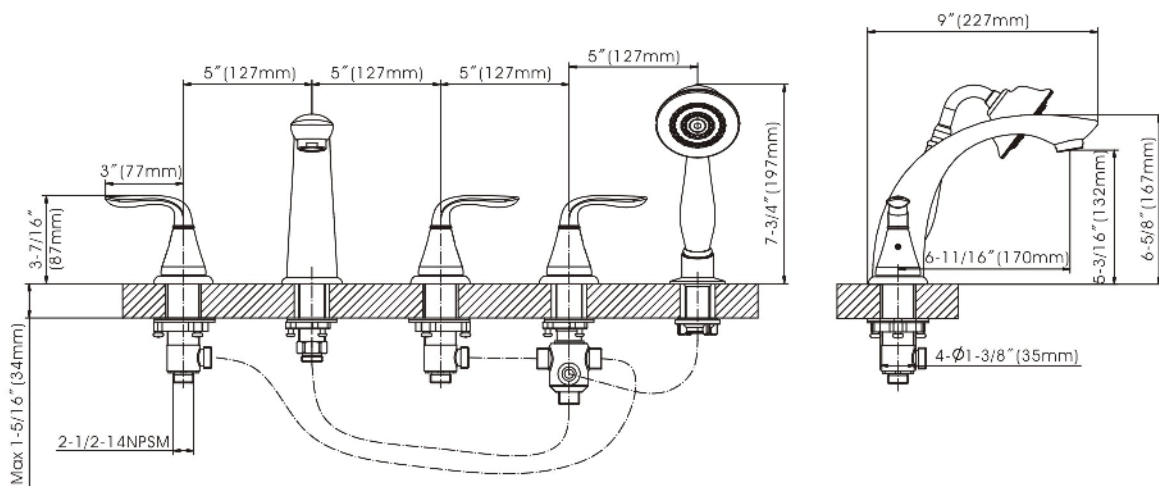
211-6620 (CH)



211-6621 (BN **Spotless PVD**)



211-6622 (ORB)
(Shown Model)



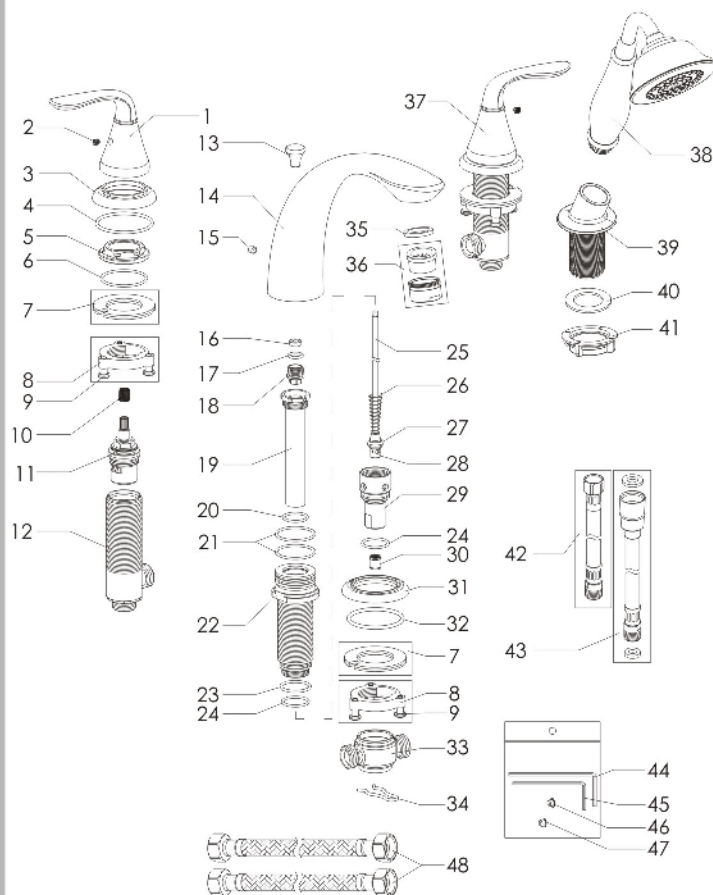
Cartridge (Type K)



Product Compliance:

- ASME A112.18.1 / CSA B125.1
- ANSI A117.1 (ADA)

Majestic - 4 PC Roman Tub With Hand-held Shower



Model No. :

211-6620 (Polished Chrome)

211-6621 (Brushed Nickel **Spotless PVD**)

211-6622 (Oil-Rubbed Bronze)

No.	Part Name	Material
1	Handle	Zinc
2	Set Screw	Stainless Steel
3	Handle Flange	Zinc
4	O-Ring	Rubber
5	Cartridge Lock Nut	Zinc
6	O-Ring	Rubber
7	Clamp	Rubber+Stainless Steel
8	Lock Nut	Zinc
9	Screw	Stainless Steel
10	Handle Adapter	Plastic
11	Cartridge(Hot Water)	Brass
12	Brass Valve Body	Brass
13	Knob	Zinc
14	Spout	Brass
15	Set Screw	Stainless Steel
16	Sealing Ring	Rubber
17	O-Ring	Rubber
18	Adapter	Brass
19	Diverter Tube	Brass
20	O-Ring	Rubber
21	O-Ring	Rubber
22	Shank	Brass
23	O-Ring	Rubber
24	O-Ring	Rubber
25	Lift Rod	Brass
26	Diverter Spring	Stainless Steel
27	Washer	Rubber
28	Diverter Core	Brass
29	Diverter Cover	Brass
30	Check Valve	Plastic
31	Spout Flange	Zinc
32	O-Ring	Rubber
33	Spout Brass Tee	Brass
34	Clip	Stainless Steel
35	Aerator Washer	Brass
36	Aerator	Plastic+Brass
37	Cartridge(Cold Water)	Brass
38	Hand-Held Shower	Plastic
39	Shower Holder	Plastic
40	Washer	Rubber
41	Plastic Lock Nut	Plastic
42	Connect Hose	Stainless Steel
43	Pull-Out Hose	Stainless Steel
44	Allen Key	Steel
45	Allen Key	Steel
46	Index(Hot)	Stainless Steel
47	Index(Cold)	Plastic
48	Flexible Hose	Stainless Steel

Cartridge (Type K)



Technical Support: warranty@cmiproduct.com
Hour of Operation: Mon - Fri 8:30 a.m - 5:00 p.m. EST