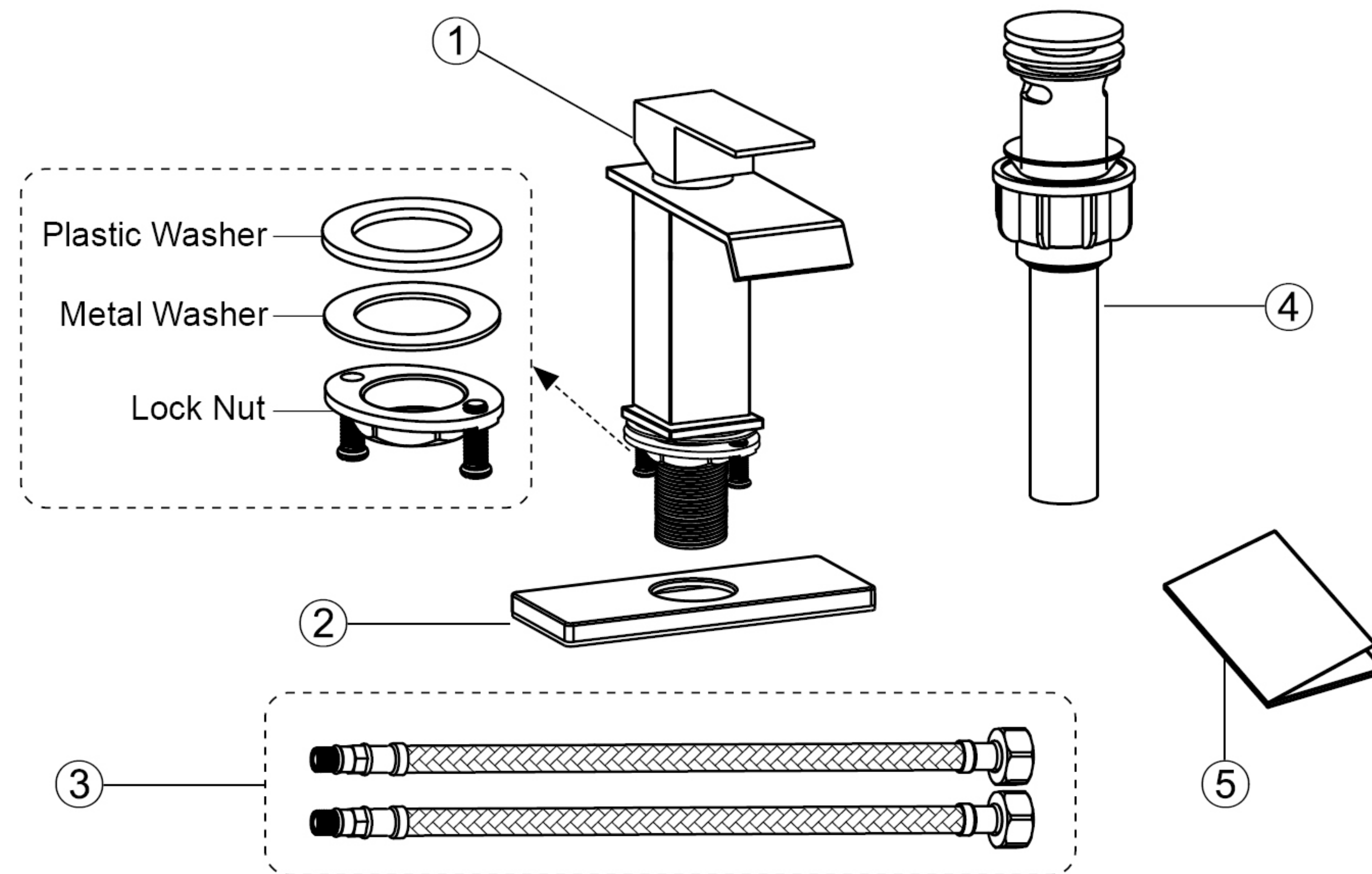


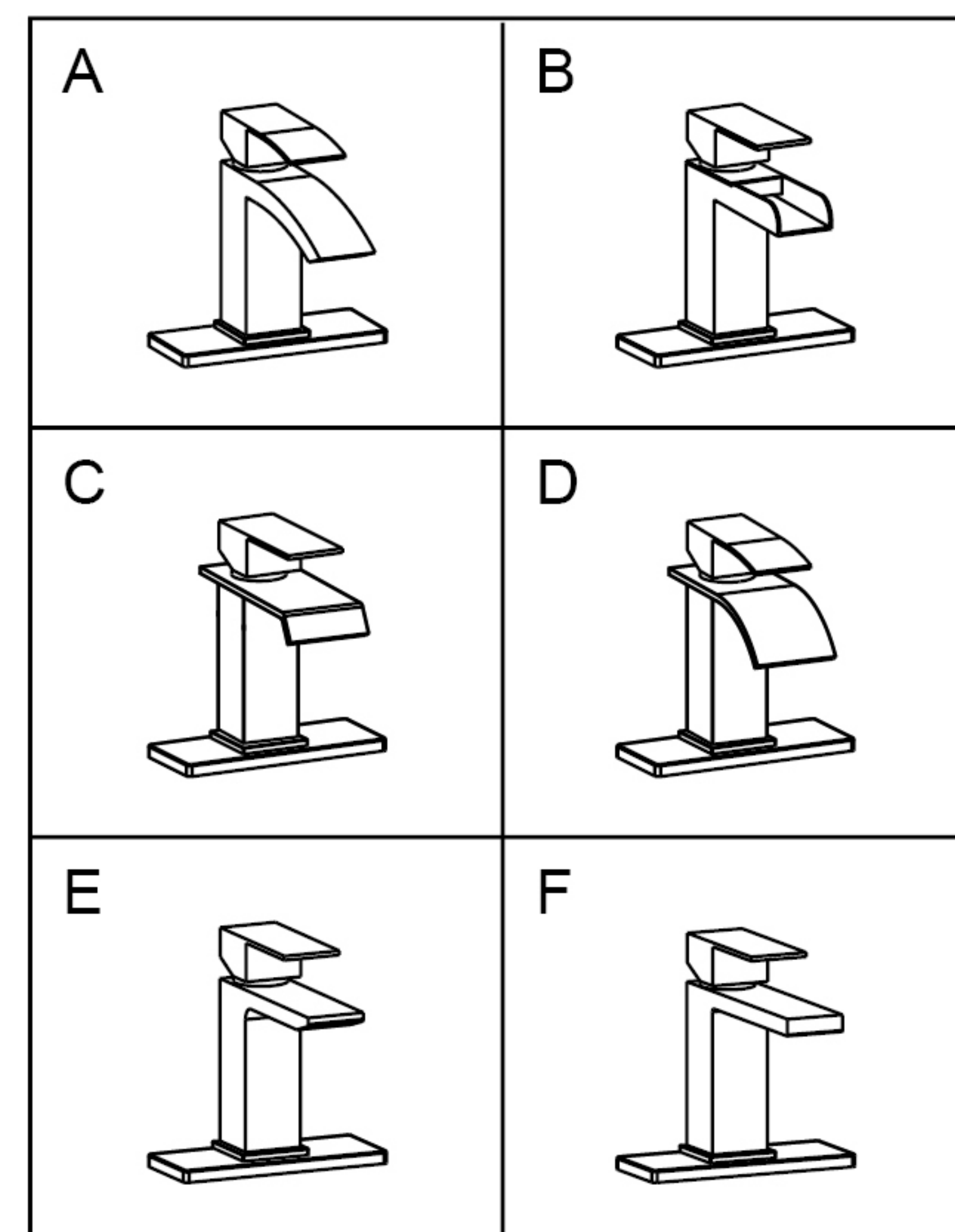
# INSTALLATION INSTRUCTIONS



## Accessories List

NO	ACCESSORIES NAME	QTY
①	Main Faucet Body	1
②	Deck Plate	1
③	Water Supply Hoses	2
④	Pop-up Drain Stopper	1
⑤	Instructions	1

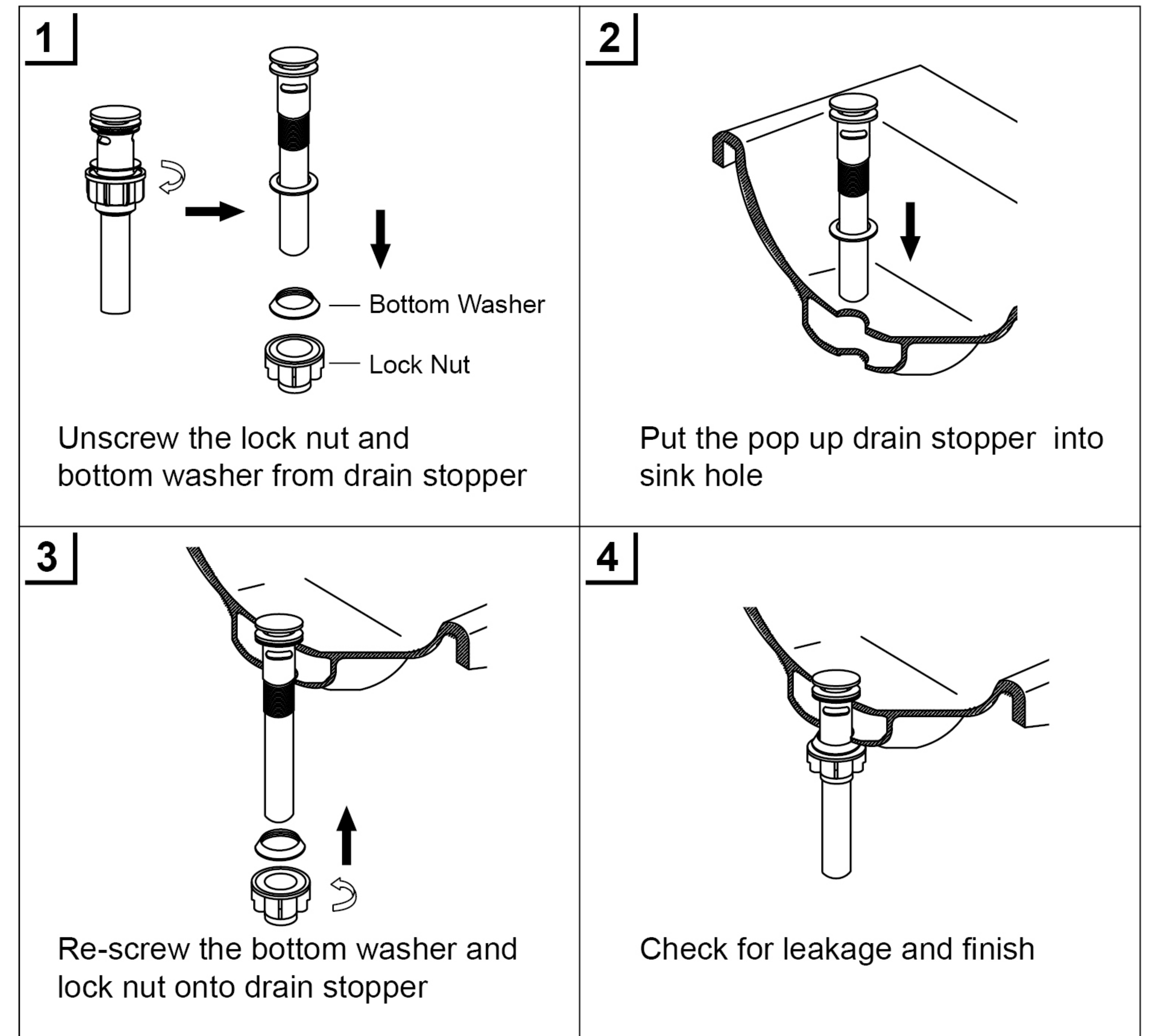
## Six Faucet Styles



## Installation Precautions

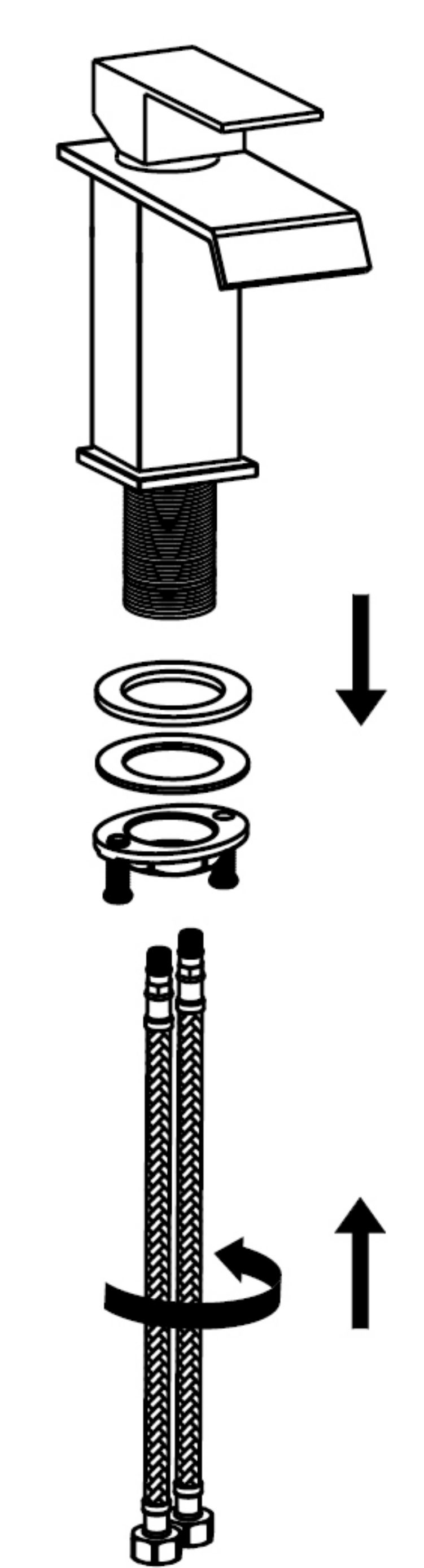
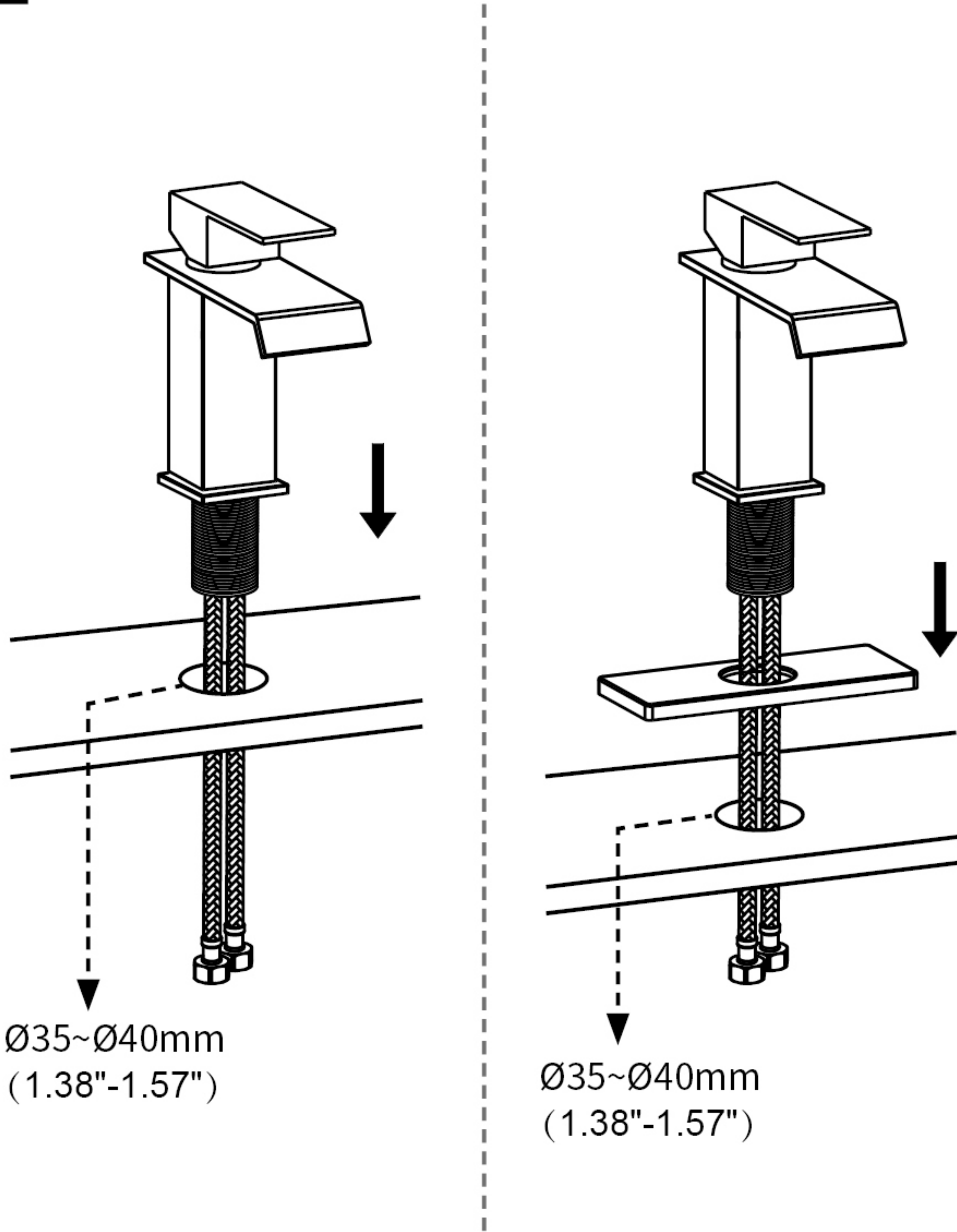
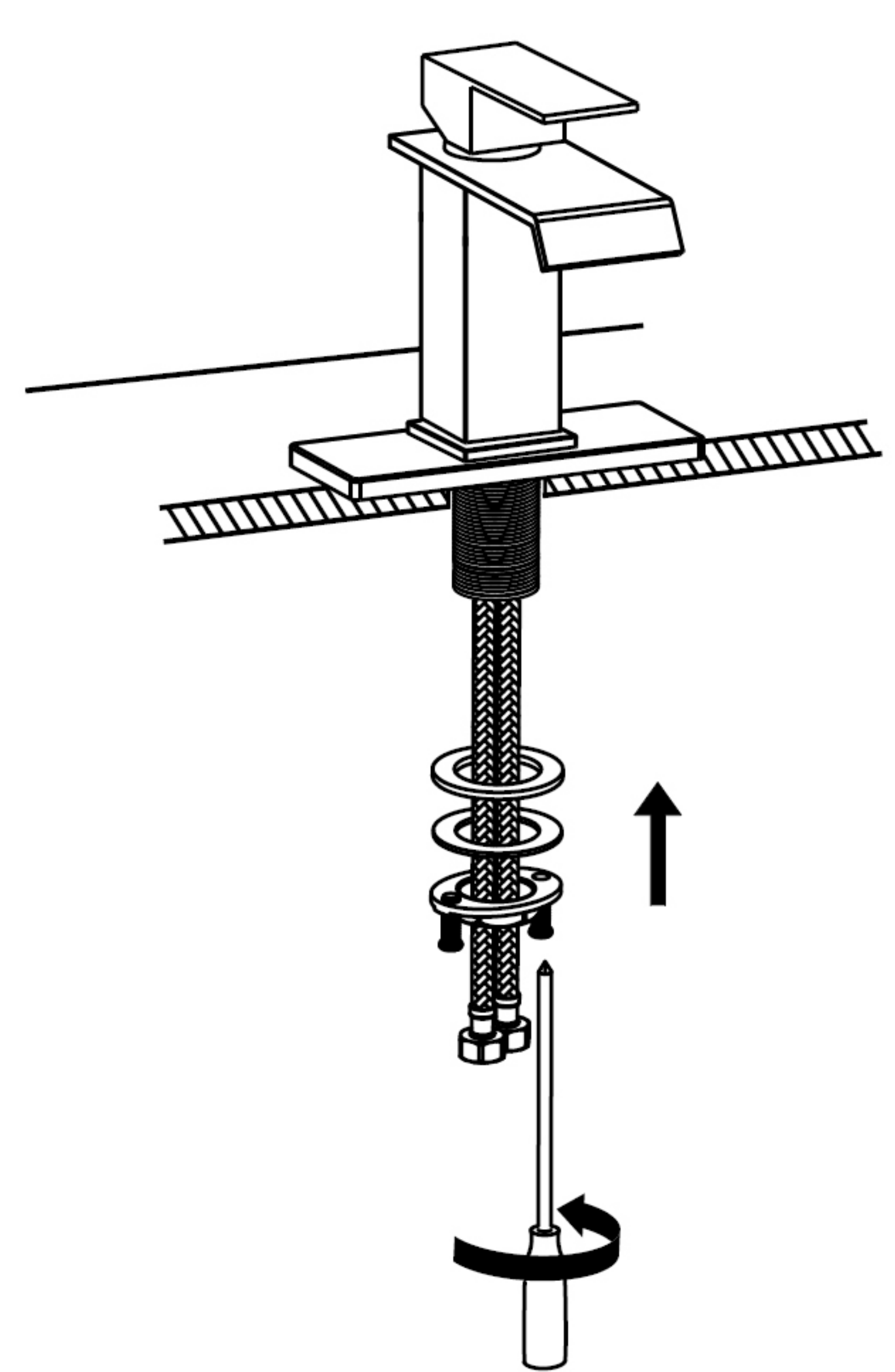
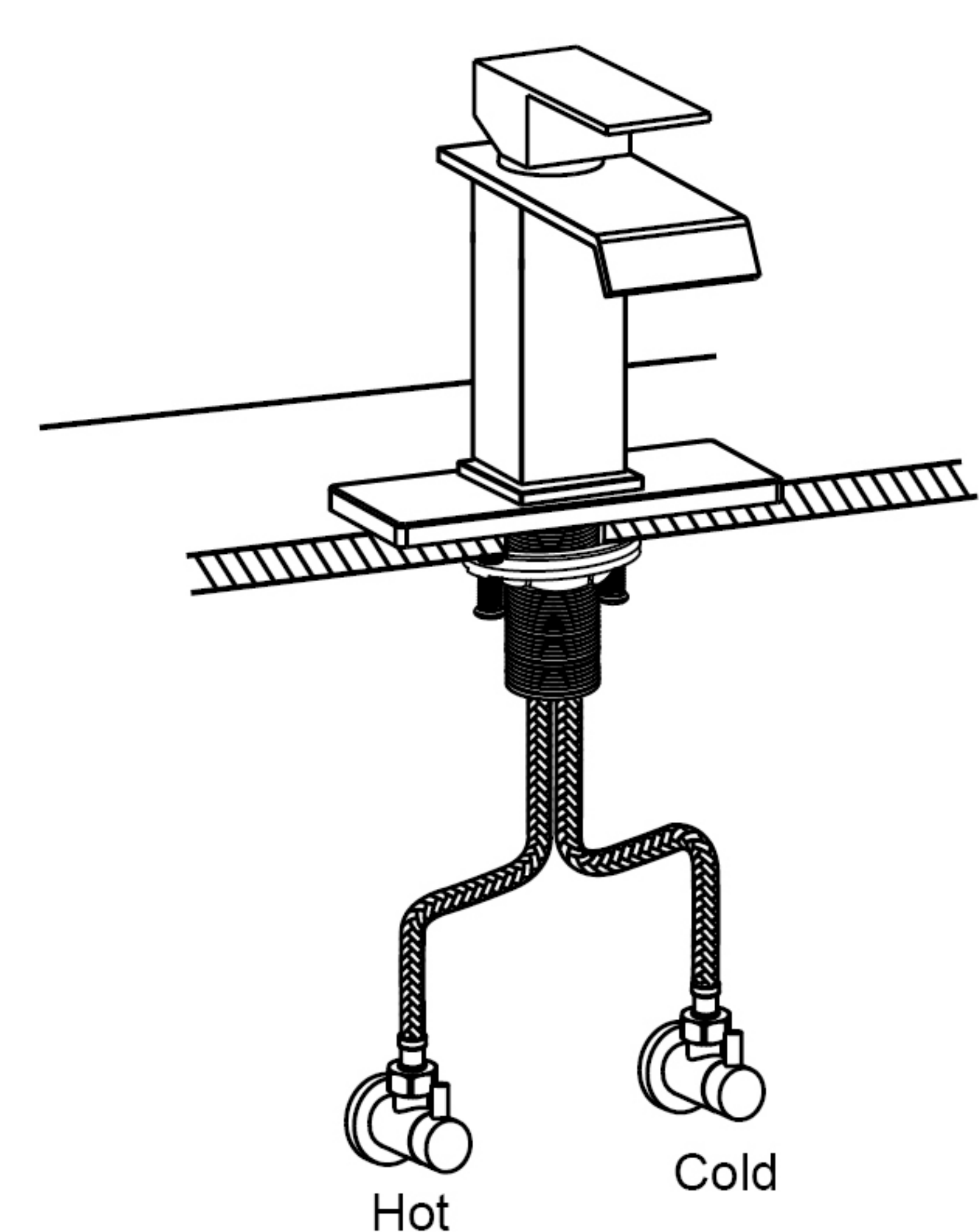
1. After unpacking the package, please check whether the accessories are complete according to the "Accessories List". If there are any missing accessories, please contact us immediately.
2. The main faucet body has been inspected and tested before leaving factory, please do not disassemble it by yourself.
3. In order to avoid blockage and affect use, please remove the impurities and sludge in the water pipe before installing the faucet.
4. Use a mild liquid detergent for cleaning, do not use abrasive detergent that may scratch or dull the surface.

## Installation Steps





Installation Steps

<div data-bbox="97 239 638 1392"><div data-bbox="97 239 163 304">1</div></div>	<div data-bbox="638 239 1478 1392"><div data-bbox="638 239 703 304">2</div><div data-bbox="682 1081 1424 1186">Ø35~Ø40mm (1.38"-1.57")</div><div data-bbox="756 1281 1350 1333">Step 2-1 OR Step 2-2</div></div>	<div data-bbox="1478 239 2169 1392"><div data-bbox="1478 239 1543 304">3</div></div>	<div data-bbox="2169 239 2870 1392"><div data-bbox="2169 239 2234 304">4</div></div>
<div data-bbox="97 1392 638 1969"><p>Unscrew fixed accessories from main faucet body. Screw water supply hoses to faucet connectors (Note: Red hose connect to left hole, blue hose connect to right hole)</p></div>	<div data-bbox="638 1392 1478 1969"><p>Place faucet into sink hole (hole size: Ø35-40mm/1.38"-1.57") (Note: Depending on your preference, the deck plate can be installed or not)</p></div>	<div data-bbox="1478 1392 2169 1969"><p>Re-screw fixed accessories to main faucet body, then tighten the screws on the lock nut with screwdriver</p></div>	<div data-bbox="2169 1392 2870 1969"><p>Connect another end of the water supply hoses to stop valves (Note: Red hose connect to hot water, blue hose connect to cold water)</p><p>Turn on water, check for leakage, re-tighten the hoses if necessary</p></div>