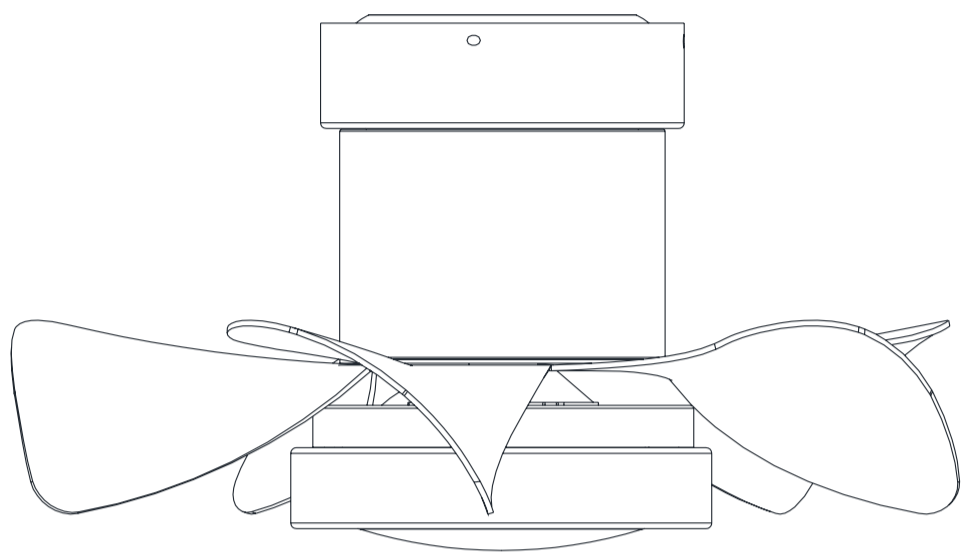


Creative design

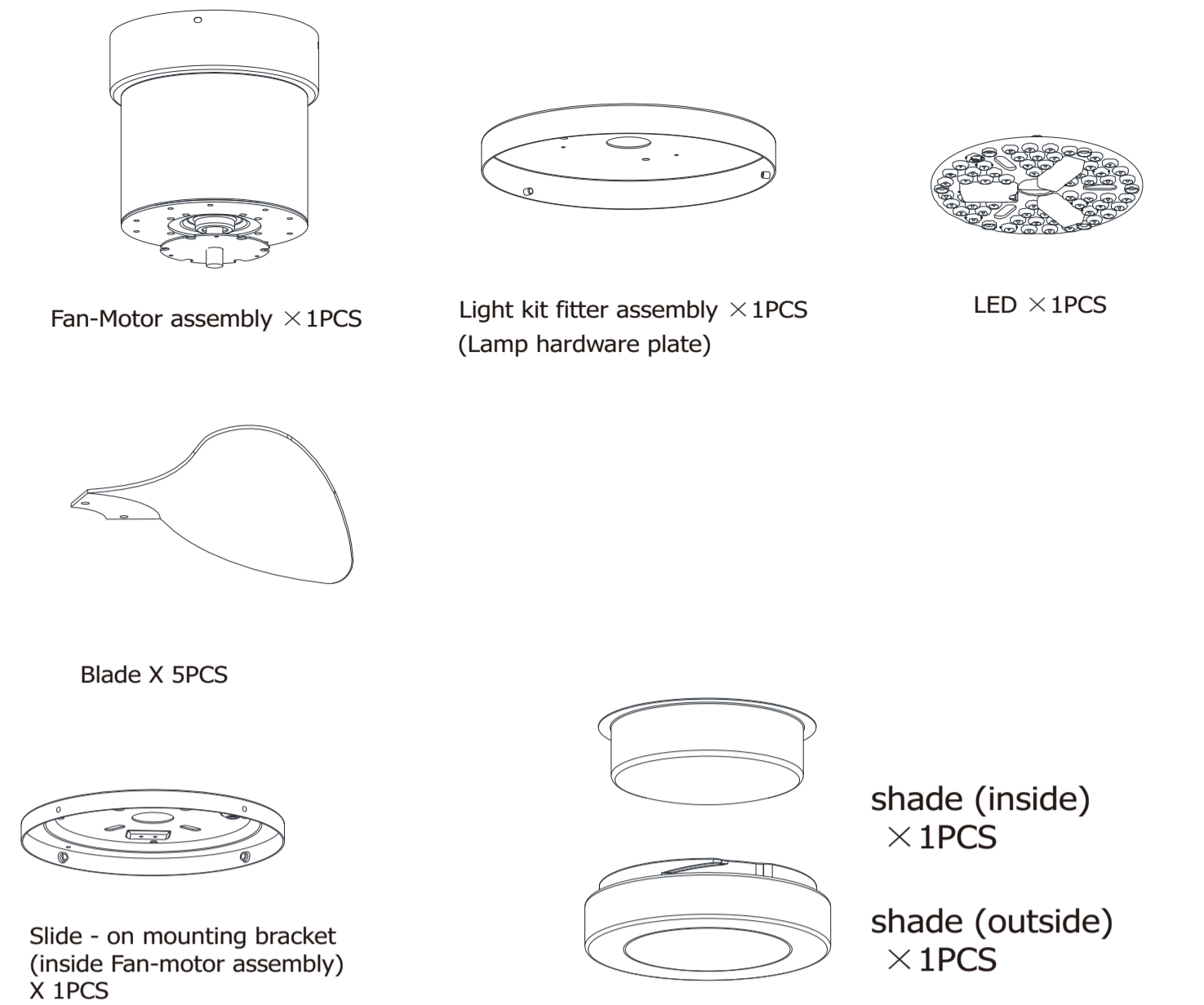
Multi-Scenario hanging or Ceiling



DEROCATE CEILING FAN

User Manual

Pre-Installation

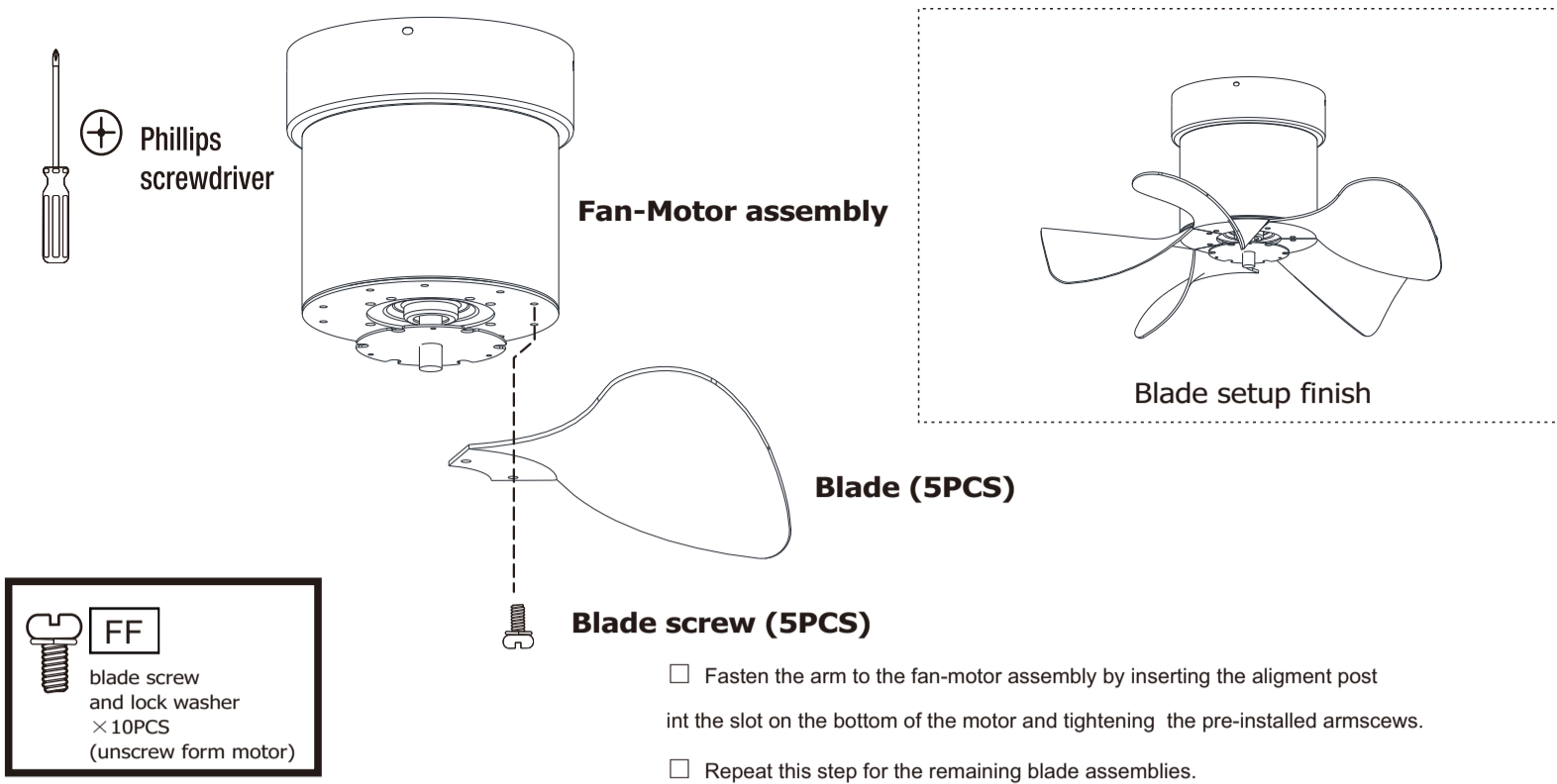


Parts Kit

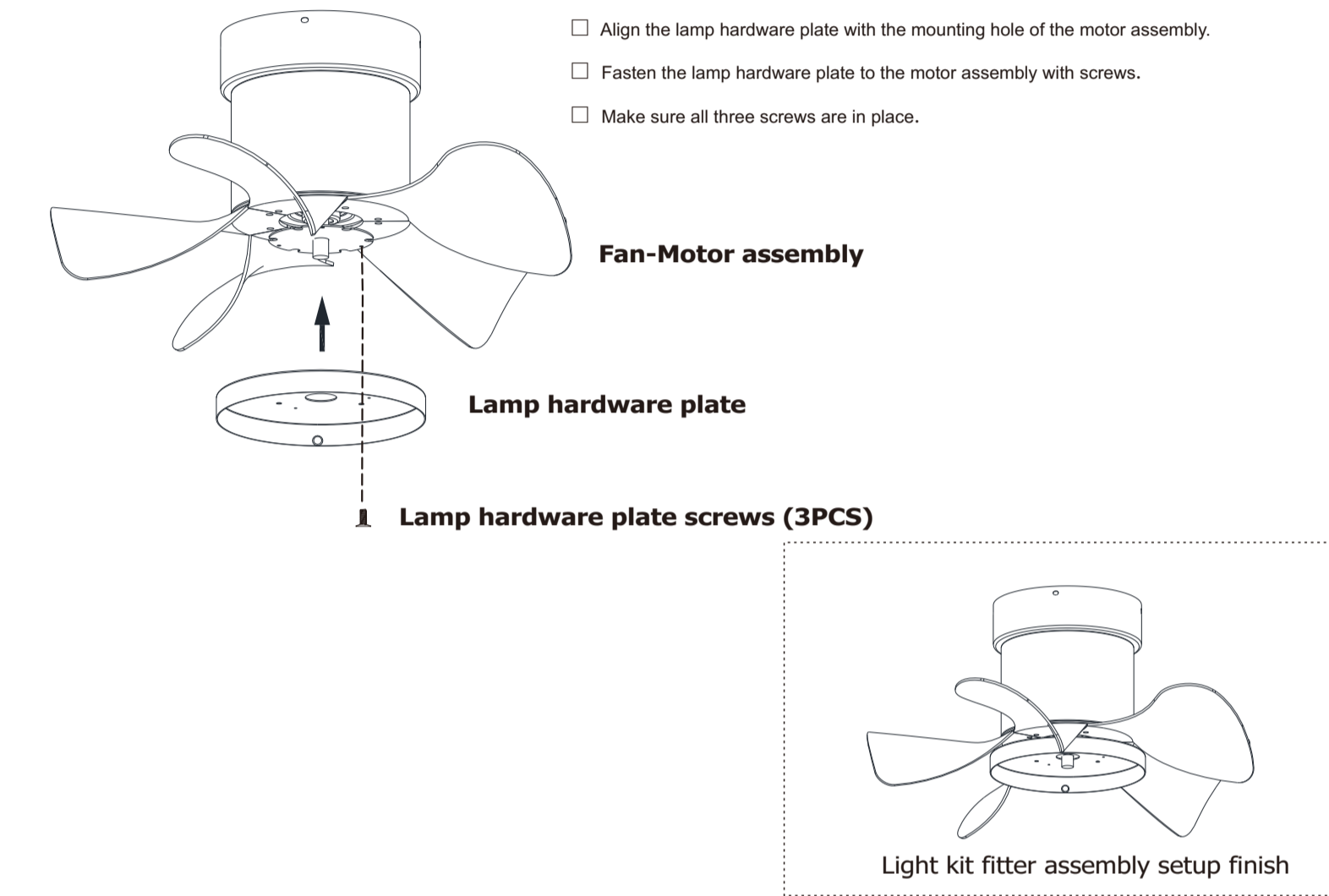
NOTE

Hardware not shown to actual size.

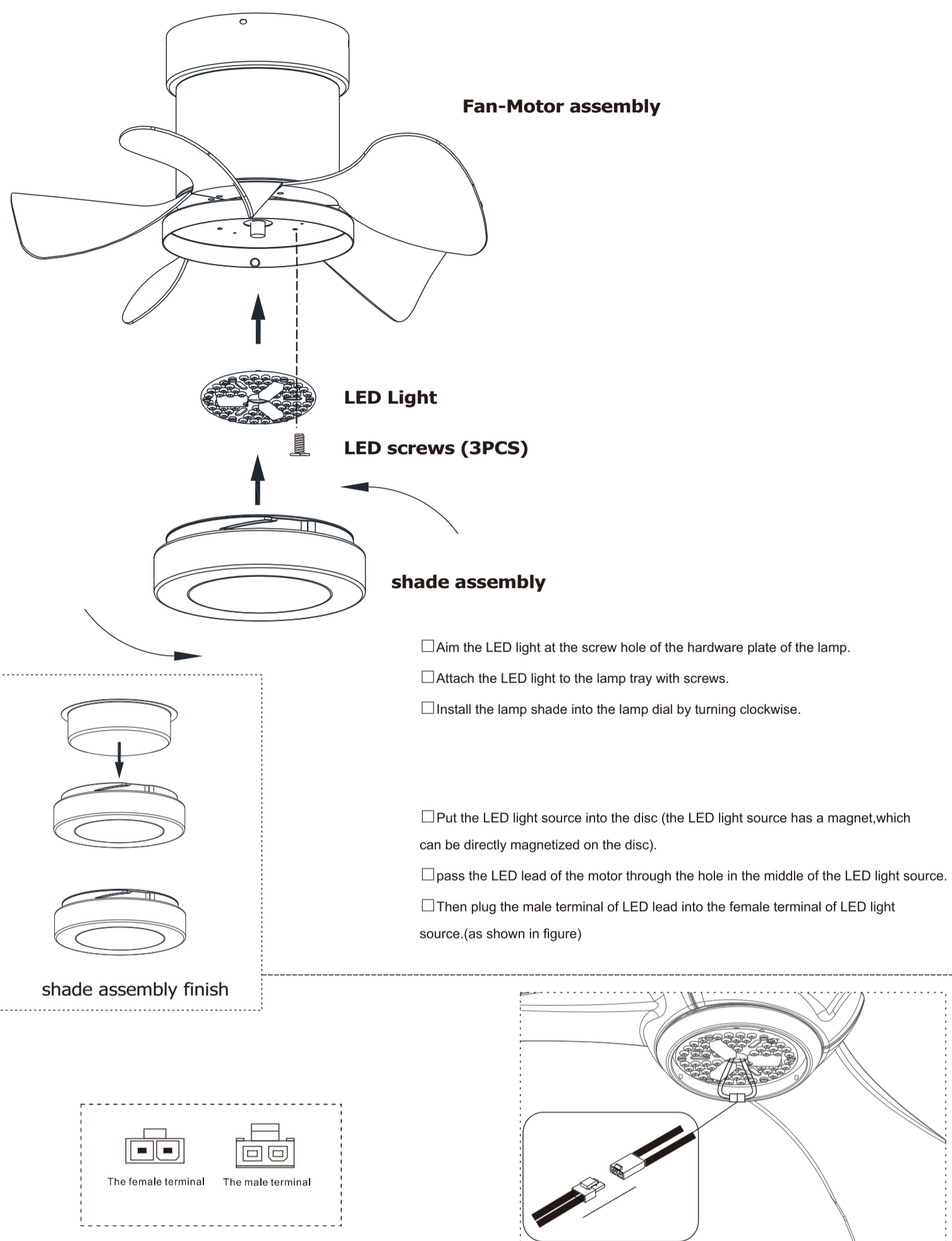
Fastening the blade arms to the motor



Assembly-Attaching the Lights



Assembly-Attaching the Lights



Installation of the hanging bracket

CÖNCRETE CEILING

For concrete ceiling, use the percussion bit with diameter 8mm to drill holes according to the length of expansion screws. Then use the attached expansion screws to fix the hanging bracket onto the ceiling (selection is made according to actual requirements of the customers).

WOODEN CEILING

For wooden ceiling, use wood screw to drill on the wooden beam or the "junction box" to fix the hanging bracket(selection is made according to actual requirements of the customers)

STEP 1 A-CONCRETE CEILING

SWITCH OFF THE ELECTRICAL MAINS AT THE CIRCUIT BREAKER FUSE BOX.

1 )Use the Mounting Bracket as a guide, mark the spots where the 4 Expansion Bolts will be drilled.

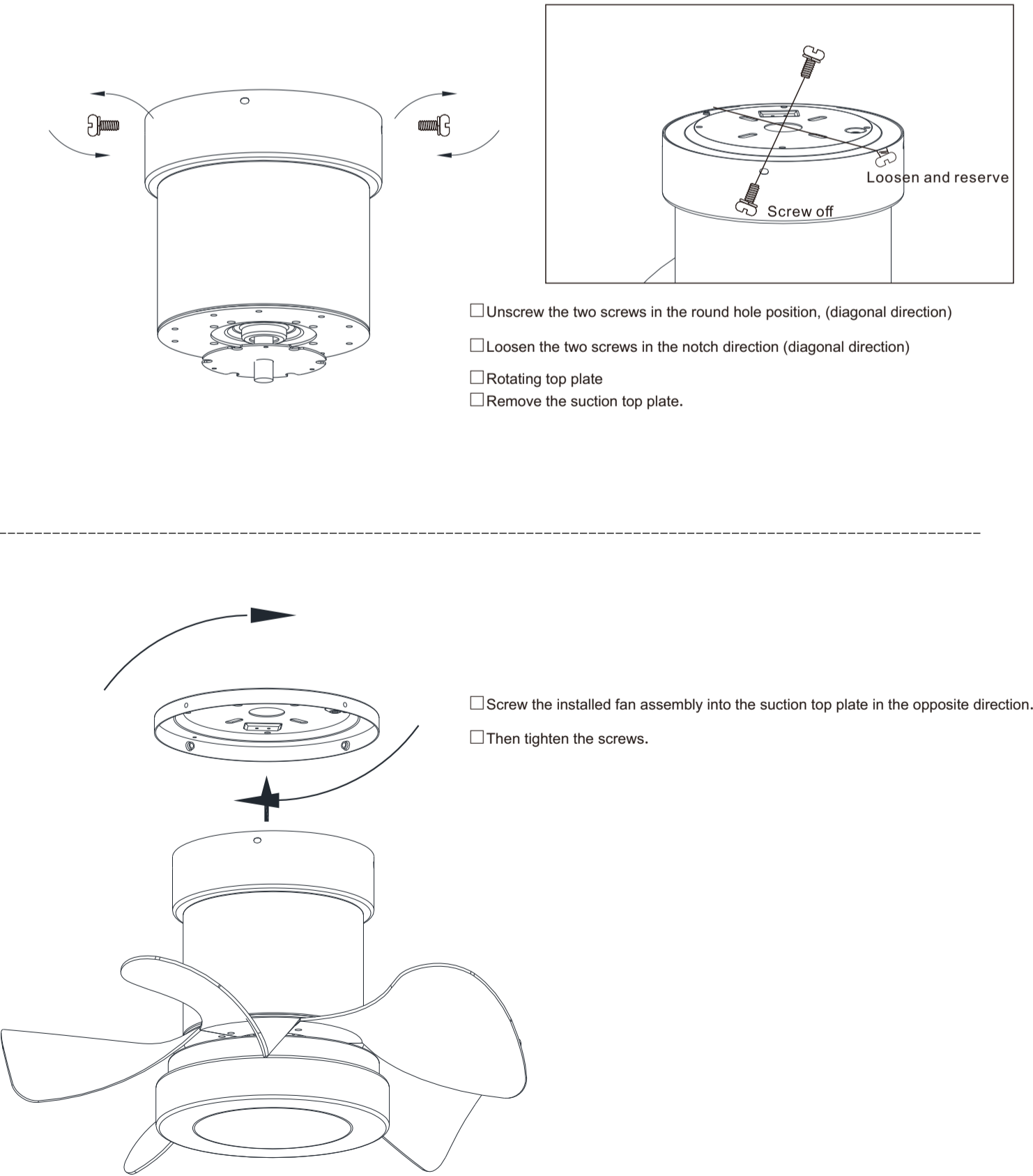
2 )Remove the Mounting Bracket , drill 2 holes and insert 2 Expansion Bolts into the concrete ceiling, install the mounting bracket and secure with Flat Washers , Spring Washers and Nuts .

IMPORTANT : SCREWS & NUTS MUST BE TIGHTENED TILL SNUG

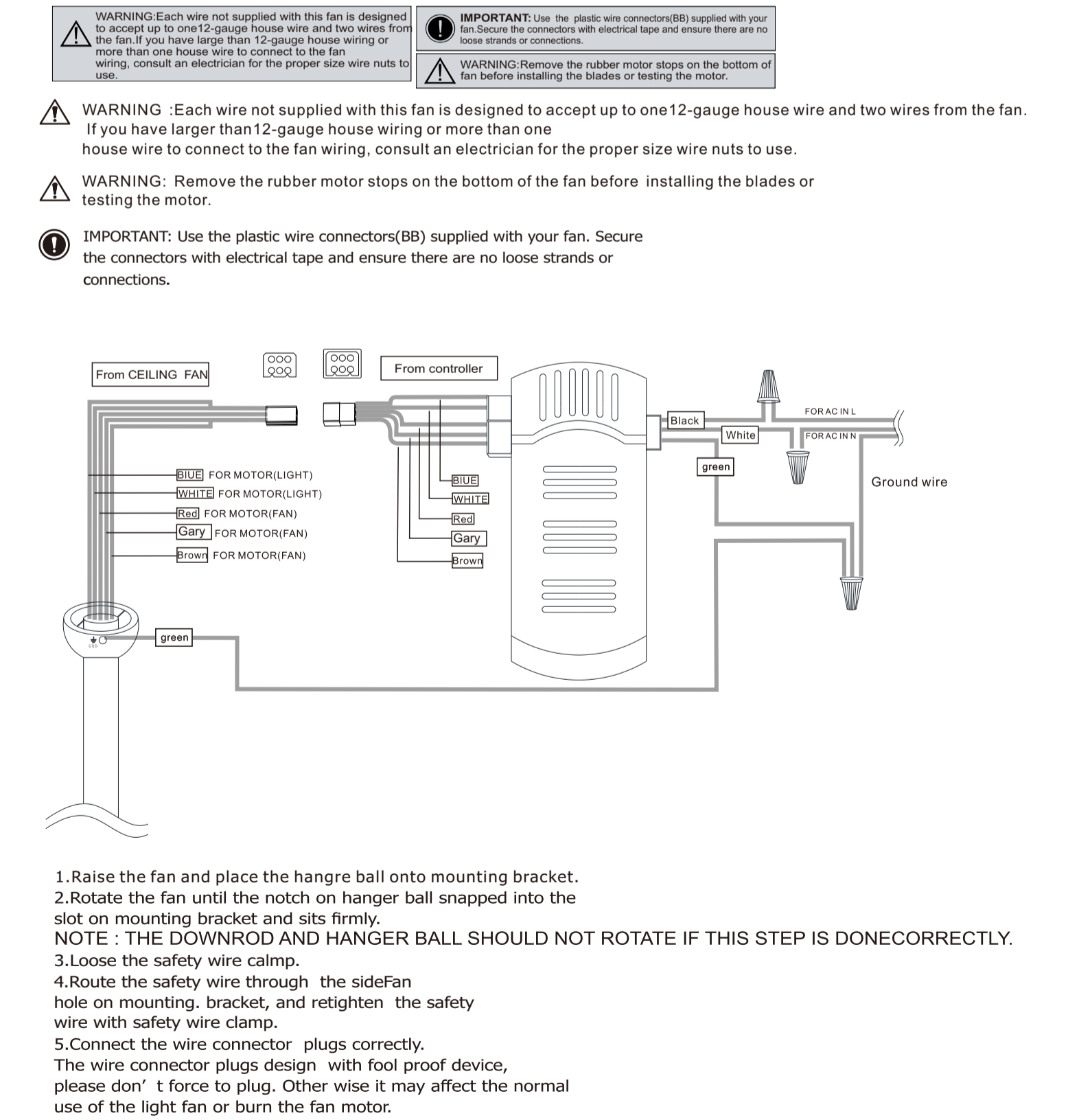
STEP 2 A-WOODEN CEILING

SWITCH OFF THE ELECTRICAL MAINS AT THE CIRCUIT BREAKER FUSE BOX.

Install downrod assembly



Making the electrical connections



Use of remote control

