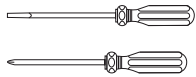


WESTBRASS

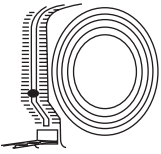
Fine Decorative Plumbing Since 1935

493244H or 493144H Illusionary Bathwaste & Overflow Desbordamiento de baño Dren

YOU MAY NEED: USTED PUEDE NECESITAR:



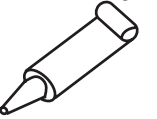
Screwdriver
El destornillador



Tape measure
Cinta métrica



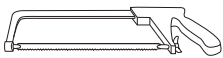
Important: Use PTFE tape or silicone seal on screws.
Importante: Use cinta PTFE o selador de silicón en las tornillos.



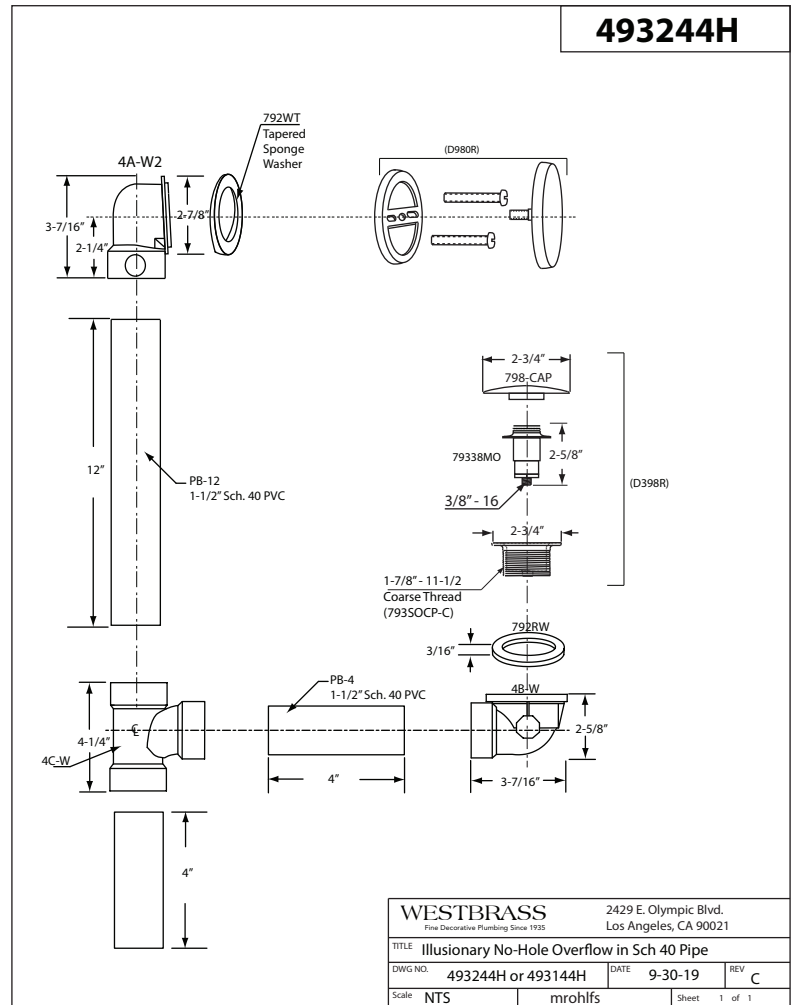
Silicone Sealant: Use Silicone sealant under base of strainer.
Sellador de silicón: Si el lavamanos está desnivelado use sellador de silicón debajo de la base del borde.



Pliers: For removal and installation.
Alicates: Para quitar y instalación

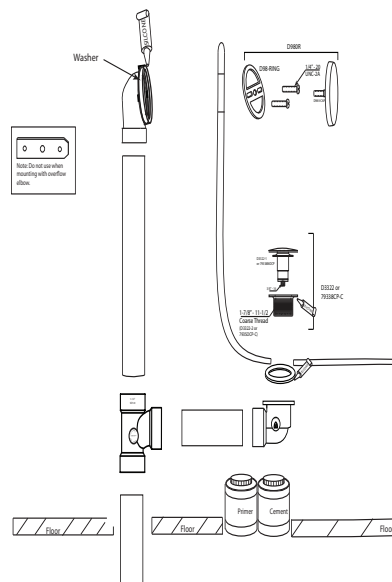


Hacksaw
Sierra



Installation Instructions:

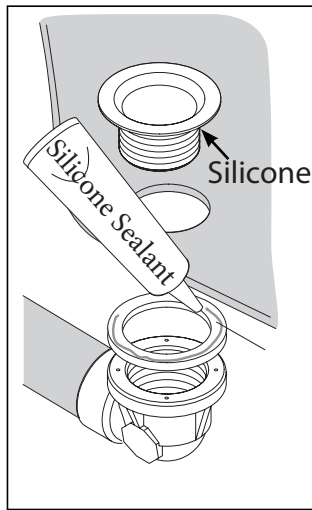
1. Measure and dry fit all connections. Use tubing cutter or hacksaw to cut tubes as required.
2. Place rubber gasket on overflow top elbow. Caulk with silicone.
3. Wrap screws with PTFE tape or apply silicone. Attach ring to overflow with screws and draw tight.
4. Place shoe elbow under tub, using rubber washer between bottom of tub and shoe elbow. Apply a thin bead of silicone between washer and tub.



Instrucciones de Instalación

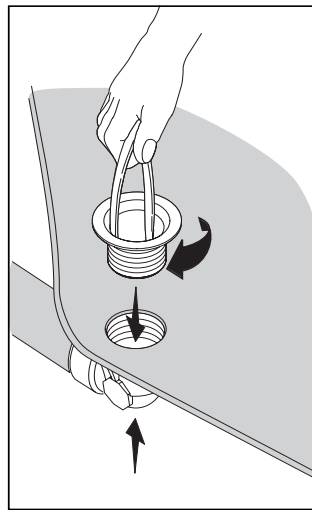
1. Mida y ajuste en seco todas las conexiones. Use un cortador de tubos o una sierra para cortar tubos como necesario.
2. Coloque la junta de goma en el codo superior del rebosadero. Calafatee con silicona.
3. Envuelva los tornillos con cinta de PTFE o aplique silicona. Fije el anillo al rebosadero con tornillos y apriete.
4. Coloque el codo del zapato debajo de la bañera, usando una arandela de goma entre la parte inferior de la bañera y el codo del zapato. Aplique una fina gota de silicona entre la lavadora y la tina.

5. Screw in strainer through the tub into shoe elbow. Wipe off any excess silicone with a clean towel.
6. Align TEE with pipes then glue in using primer and adhesive. Let dry.
7. Thread in stopper into bottom shoe.
8. Securely screw overflow cover into top elbow wagon wheel.
9. Check for leaks.



Silicone seal locations

Lugares de sellado de silicona



Tighten using Pliers or a plug wrench

Apriete utilizando alicates o una llave de bujías

5. Enrosque el colador a través de la tina en el codo del zapato. Limpia cualquier exceso de silicona con una toalla limpia.
6. Alinee la TEE con los tubos y luego péguela con imprimador y adhesivo. Deje secar.
7. Enrosque el tapón en la zapata inferior.
8. Atornille firmemente la cubierta de rebose en la rueda acodada superior del remolque.
9. Compruebe si hay fugas.

CARE & MAINTENANCE

With the exception of living finishes, all Westbrass decorative finishes are protected by the strongest finish treatments available while maintaining their luxurious appearance. While some finishes are more durable than others, no finish is indestructible. Polished Chrome, Satin Nickel and PVD Polished Brass finishes are the most durable. All other finishes are electroplated; some are then coated to enhance the gloss and durability. "Living" finishes are uncoated, designed to be exposed to the air and other elements, with the intention to age and change in their natural beauty. All of our finishes, plated and living, require some care in use.

TO CLEAN:

Do not allow your product to come into contact with any cleansers fortified with ammonia, bleach, grease-cutters or other surfactant chemicals. Soft Scrub, Dawn Liquid Soap, Palmolive or any other combined cleaners contain certain chemical components that will dissolve and remove the finish's protective coating, and eventually the finish itself. Use only plain warm water and mild soap on a soft cloth or sponge. Avoid using any sponge with a scouring pad to clean your product. It is not necessary to rub hard to remove spots.

TO PROTECT:

An occasional application of Carnauba wax (without cleaners), like that found in Flitz Faucet Wax, Turtle Wax for Clear Coat Car Finishes or McGuire's Premium Wax, will enhance the finish lustre, reduce hard water spots and add an extra layer of protection to your finish.

WARRANTY

Finishes:

All sink and tub/shower drains, strainers and other trims have a 1 year warranty in the following finishes:

- | | | |
|-------------------------|----------------------|-------------------------------|
| (01) PVD Polished Brass | (26) Polished Chrome | (07) Satin Nickel |
| (12) Oil Rubbed Bronze | (50) Powder Coated W | (62) Powder Coated Flat Black |

Other Westbrass finishes, including living finishes and other electroplated finishes carry no warranty.

Functional Warranty:

The functionality of all products is warranted for a period of one year. Ceramic disc valves on any water delivery merchandise are warranted for one year. Warranties are guaranteed to the original purchaser only. Product problems attributable to abuse, misuse, improper installation, hard water, neglected maintenance or accidental damage are not covered by this warranty. Modifying the product in any way voids the warranty. The use of plumber's putty on our products also voids the warranty. Silicone

sealing compounds should be used instead. No repairs or replacements will be made under such circumstances except at customer's expense. Liability under warranties expressed or implied is limited to repair or replacement of defective goods only. In no event will Westbrass be liable for incidental or consequential damages (such as labor charges). This warranty does not cover labor charges, whether based on breach of express or implied warranty, breach of contract, negligence or any other legal theory.