

GATEHOUSE

— A STRONG IMPRESSION —™

ITEM #0226069/0226087/0226090/0226091/0141055/0141053

0225974/0225976/0239863/0239857

BED & BATH/HALL & CLOSET

MODEL #TUT30/TUTG0/TUX230/TUX2G0/TUX730/TUX7G0

LY9X203/LY9X20G/LY9X703/LY9X70G

WARNING

IF DRILLING IS REQUIRED, you should read and thoroughly understand steps 1 - 4 prior to drilling.

Please drill holes from both sides to avoid splintering of the door face.

IF HOLES ARE ALREADY DRILLED IN YOUR DOOR, install latches and begin at step 5.



For questions, please call 1-877-4GATEHS, 8:30 a.m. - 5:30 p.m. EST, Monday through Friday.



SAFETY INFORMATION

INSTALLATION AND CARE NOTATIONS:

- The important safeguards and instructions appearing in this manual are not meant to cover all possible conditions and situations that may occur. It must be understood that common sense, caution and care are factors which cannot be built into any product. These factors must be supplied by the person(s) caring for and operating the unit.

PREPARATION

Additional tools needed for NEW installation:

- Pencil
- Hammer
- 2-1/8 in. (54mm) Hole Boring bit
- Chisel
- Power drill
- Tape measure
- 1 in. (25mm) & 1/8 in. (3mm) Drill bits
- 2 in. (51mm) 6d common nail

INSTRUCTIONS FOR INSTALLATION OF LOCKSETS

1. MARK DOOR

Use enclosed template to mark installation holes on both sides of the door as shown.

A. Heightline - 38 in. from floor (965mm).

B. Center of door thickness on heightline.

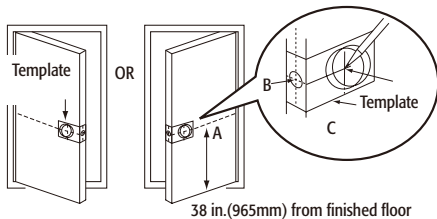
C. Knob hole center for backset - 2-3/8 in. (60mm) or 2-3/4 in. (70mm) as desired.

(Note 2-3/8 in. (60mm) is standard)

TO MARK OPPOSITE SIDE OF DOOR: fold template in opposite direction and place on other edge of the door, matching up "mark (1B)" - center of door thickness as shown in illustration.

(Back of template will be facing you.)

Mark knob hole center at point of template indentation (1C).



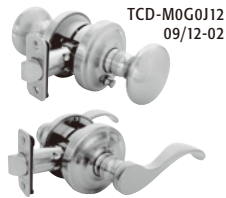
2. DRILL HOLES (SEE ILLUSTRATIONS)

Drill 1/8 in. (3mm) pilot holes as marked in Step 1 at points (B) and (C).

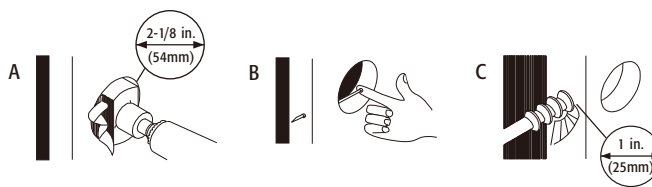
A. Drill 2-1/8 in. (54mm) holes about 1/2 way through door, then finish drilling from other side, to minimize splintering.

B. Before drilling latch holes, mark location for strike plate holes in door jamb by closing door and inserting a 2 in. (51mm) common nail from inside 2-1/8 in. (54mm) hole in to pilot hole so that nail makes an indentation in the jamb.

C. Open door and drill a 1 in. (25mm) latch hole in the door edge through to the 2-1/8 in. (54mm) hole.



TCD-M0G0J12
09/12-02

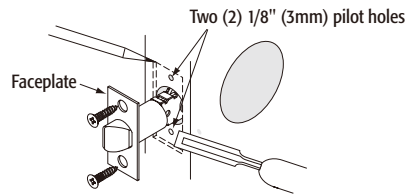


3. A. MORTISE FOR LATCH

Use faceplate as a pattern for mortise and pilot holes. Faceplate should fit flush.

B. INSTALL LATCH

Install as shown. Ensure beveled edge faces door jamb.



4. PREPARE DOOR JAMB

Drill and Install strike plates

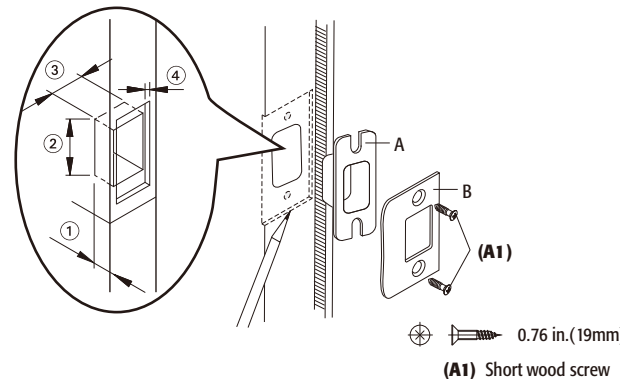
A. Mark outline for plastic dust box and then drill

- 33/64 in. (13mm) deep,
 - 1-1/4 in. (32mm) height
 - 61/64 in. (24mm) wide
- to allow for installation of plastic dust box,

- Mark location of strike mortise using strike plate as a template by placing plate over dust box and chisel outline. for strike plate with 1/8 in. (3mm) deep as marked on door jamb

B. Insert dustbox into hole, and apply strikeplate.

Secure using 0.76 in. (19mm) wood screws into pilot holes as shown.



THE FOLLOWING CARE INSTRUCTIONS SHOULD BE FOLLOWED TO INSURE A LONG LASTING FINISH:

1. Remove locks, or do not install locks, prior to painting you door.

2. Periodically clean with mild soap and a soft cloth only.

Do not use abrasives or harsh chemicals, and avoid sharp or scratching objects.

Drill 1 in. (25mm) hole at center of door edge.

1-3/4 in.
(45mm)

1-9/16 in.
(40mm)

1-3/8 in.
(35mm)

5. TUBULAR LOCK UNIVERSAL BACKSET LATCHBOLT

(This backset is set a 2-3/8 in. (60mm). It only needs to be adjusted if your door requires a 2-3/4 in. (70mm) backset.)

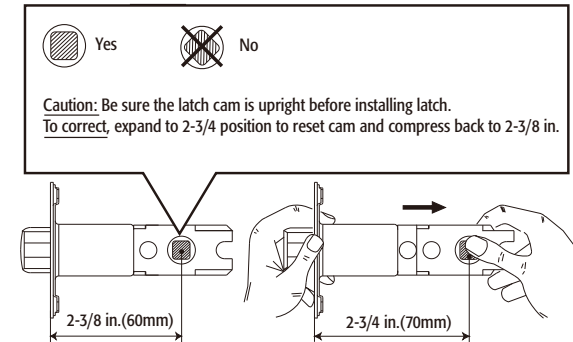
IF BACKSET ADJUSTMENT IS NECESSARY:

A. Latch is preset at factory for 2-3/8 in. (60mm) backset.

Caution: Be sure the latch cam is upright before making any backset adjustment.

B. To convert latch to 2-3/4 in. (70mm) backset, pull the rear part until 2-3/4 in. (70mm) is completely shown in indicator.

To correct cam expand to reset and compress back to 2-3/8 in. (60mm).



Note:

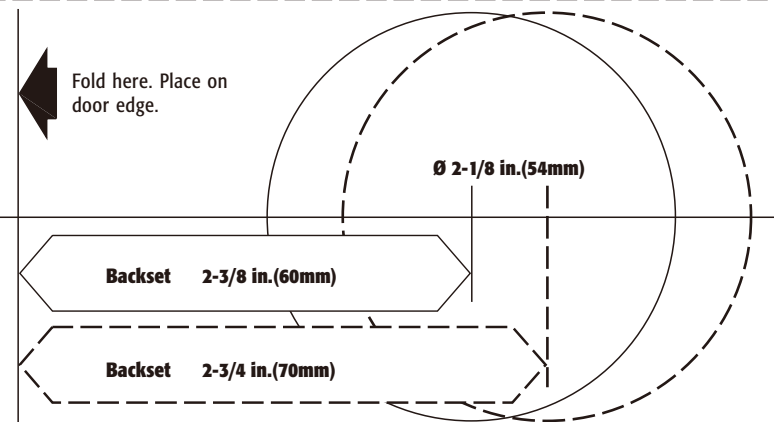
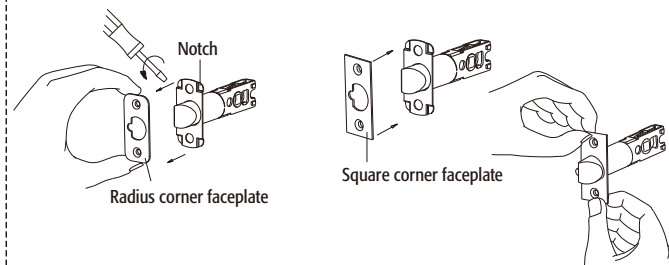
• Our latches come with interchangeable faceplates, allowing conversion from a radius shape to a square shape so it will fit most doors.

Look first at your door to determine which configuration will work best in your application and make the suitable change according to the instructions below, if needed.

• Converting from radius corner faceplate to square corner and vice versa:

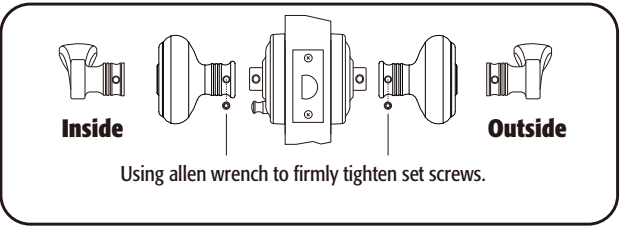
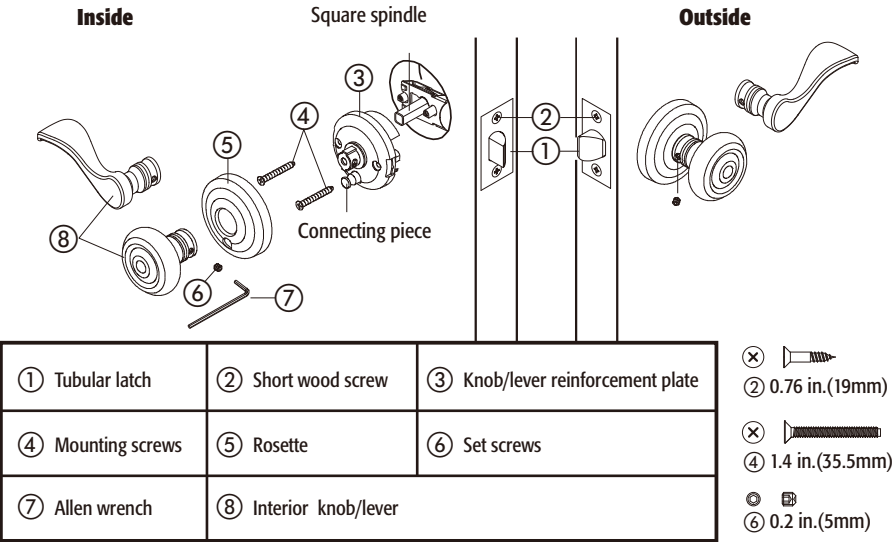
Detach installed faceplate using a flat head screw driver.

Replace with new faceplate. Align holes in the faceplate and the base plate and snap them together.



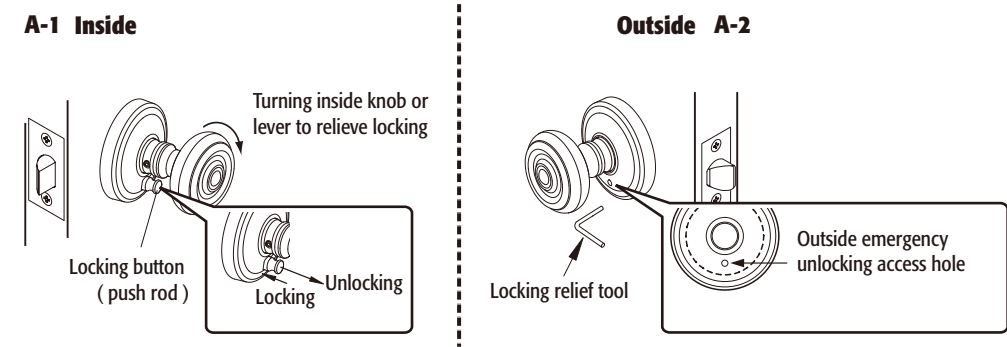
INSTALLATION OF COMPLETE LEVER OR KNOB ASSEMBLY:

- A. Install exterior lever or knob assembly, inserting square spindle with posts through latch.
- B. Install the interior rose plate with the threaded hole of the connecting piece facing down. Push the rose plate against door face and apply two mounting screws to tighten firmly.
- C. Apply interior rose to cover the rose plate.
- D. Apply interior knob or lever to engage with square spindle, pushing against interior rose and apply set screw to tighten to complete assembly.



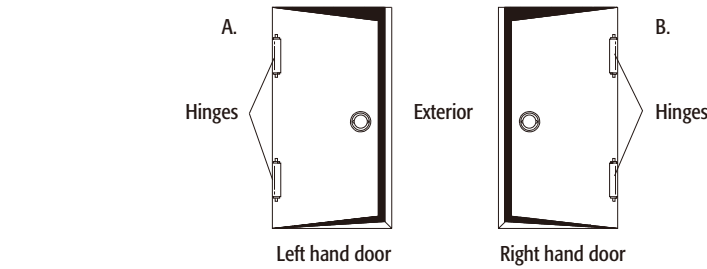
REMARKS :

- A-1. Privacy lock (Bed & Bath) fits on doors requiring locking from inside such as bedroom and bathroom. Press button (push rod) on the inside of the lock will lock the door. Locking will be automatically relieved by turning inside knob or lever.
- A-2. When the locking mechanism is engaged, you will need to insert a small pin or a pointed tool into the small hole on the lower outside rose, and push it in to unlock the door.
- B. Passage lock (Hall & Closet) fits on doors which do not require locking. Turning knob or lever on either side will open the door.



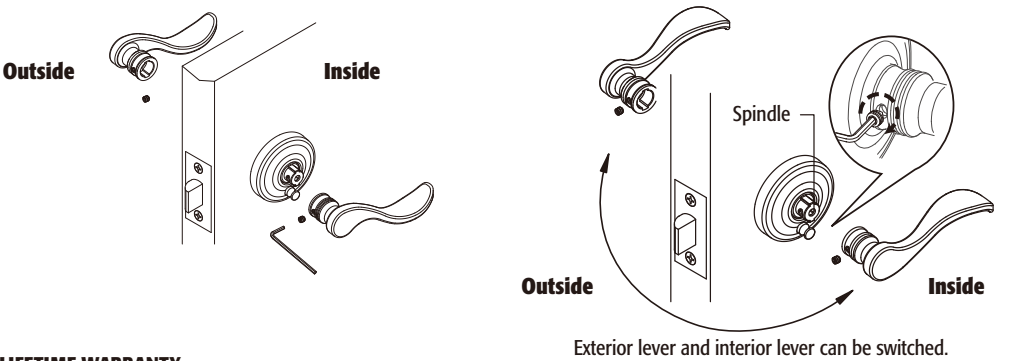
IF NEEDED, REVERSE LEVERS

- Determine handing of your door
- Stand on exterior side and face the door.
- A. Your door is a left hand door if hinges are installed on the left side.
- B. Your door is a right hand door if hinges are installed on the right side.



FOLLOW THE PROCEDURE BELOW FOR CHANGING LEVER HANDING:

- The lever set is preset as a right hand lever. If your door is a right hand door, you can install it now. If your door is left hand door, you can change the lever handing by following the procedure below:
1. Use allen wrench to loosen set screw attached to the lever.
 2. Remove lever and install the lever of opposite handing.
 3. Make sure to align set screw hole with the corresponding hole on the spindle.
 4. Insert set screw and tighten with allen wrench to secure the assembly.
- * Make sure that the handle portion of the lever extends toward the hinges of the door.



LIFETIME WARRANTY

The Manufacturer extends a Full Lifetime Mechanical and Finish Warranty to the original "User" of this Product against defects in materials and workmanship as long as the User occupies the residential premises upon which the Product was originally installed. Upon return of a defective Product to the Manufacturer, the Manufacturer shall either replace, repair or refund the purchase price in exchange for the Product.

This warranty does not cover abused or misused Products or those Products used in commercial applications. No other warranties, express or implied are made with respect to the Product including but not limited to any implied warranty of merchantability or fitness for a particular purpose.

The Manufacturer DOES NOT authorize any person to create for it any obligation or liability in connection with the Product. The Manufacturer maximum liability hereunder limited to the purchase price of the Product, in no event shall the company be liable for any consequential, indirect, incidental or special damages of any nature arising from the sale or use of this Product, whether in contract, tort, strict liability or otherwise.

(For warranty service, please call 1-877-4GATEHS, 8:30 a.m. - 5:30 p.m. EST, Monday through Friday)

Note: Should the Product be considered a consumer product it may be covered by the Magnusson Moss Federal Warranty Act, please be advised that: (1) Some states do not allow limitations or incidental consequential damages on how long an implied warranty lasts so that the above limitations may not apply; and (2) This warranty gives specific legal rights and a User may have other rights which may vary from state to state.

REPLACEMENT PARTS LIST & TROUBLESHOOTING

For replacement parts & troubleshooting, please call service department at 1-877-4GATEHS, 8:30 a.m. - 5:30 p.m. EST, Monday through Friday.

Printed in Taiwan

Part	Part #
Screw pack	SCR-L784
Tubular Latch	KLB710-AQA3PCD