

Rod Support

#5129788

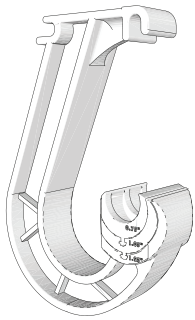


Fig. 1

1. Adjusting Support for Rod Size

Start by adjusting rod supports to the size of the rod. **Fig. 1**

The rod support has bushings that can be removed to accommodate 3 rods diameters.

3/4-in • 1-1/16-in • 1-1/4-in

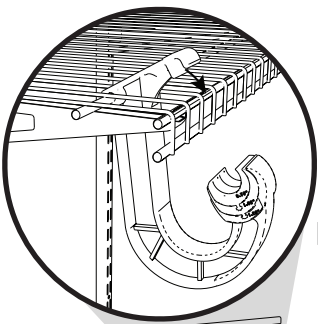


Fig. 2

2. Install Rod Supports

Attach rod supports to the installed shelving at less than 3 feet apart.

Push rod support up through the front of shelf between rods. Tilt rod support back to attach to second horizontal rod on shelf. **Fig. 2**

Pull front of rod support downward to click onto the front horizontal rod. **Fig. 3**

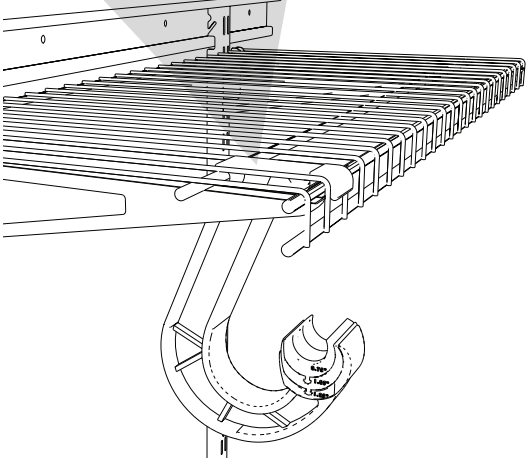


Fig. 3

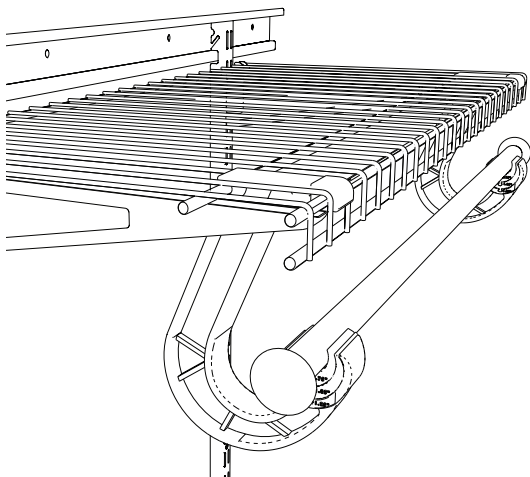


Fig. 4

3. Install Closet Rods

Add rod caps to each end of the closet rods by inserting caps into open ends of rods if applicable.

Then, push the closet rod into the installed rod supports as shown clicking rod in place.

Fig. 4