

ETHAN 36"

BATHROOM VANITY SET

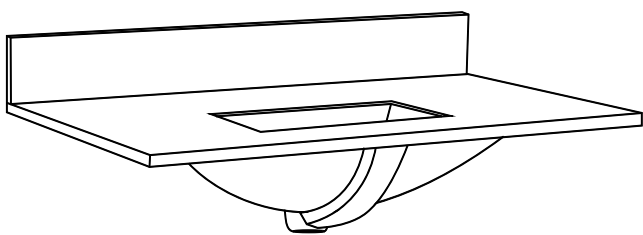
SKU: **ETHAN36QZ-OAK**

Colors/Finishes:OAK
Nominal Dimension:36W*22D*34H inches



Contents

36"Vanity.....PAGE2
36"Vanity Top.....PAGE3
Vanity Installation.....PAGE4



- 1. Top Color: Carrera white.
- 2. Sink: 1*20"undermount rectangle sink.
- 3. Faucet Holes: Top pre-drilled for 8"widspread faucet holes.
- 4. Backsplash: 4"backsplash included.
- 5. Nominal Dimension(W*D*H): 36W*22D*0.79H inches

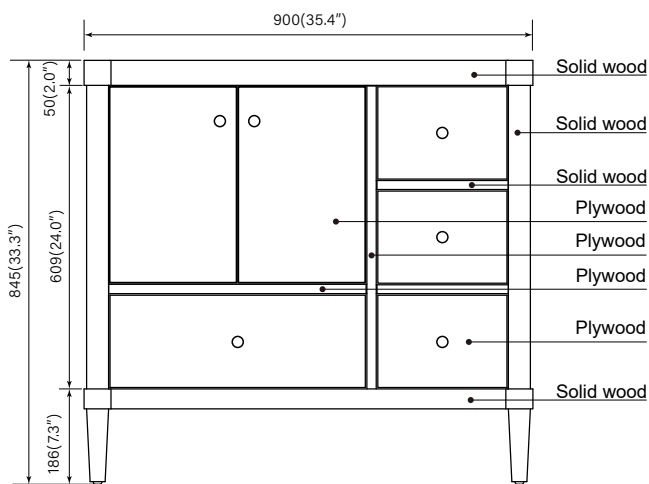
ETHAN 36"

BATHROOM VANITY SET

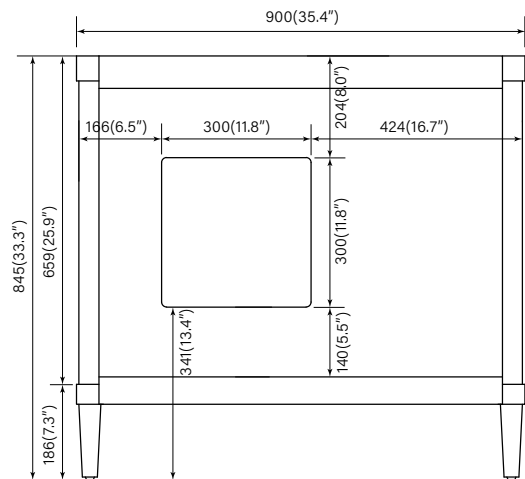
SKU: **ETHAN36QZ-OAK**

PRODUCT DIAGRAMS:

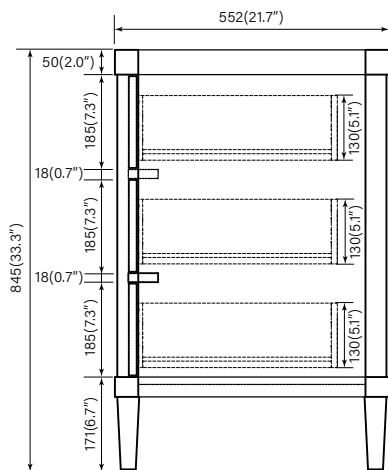
Front



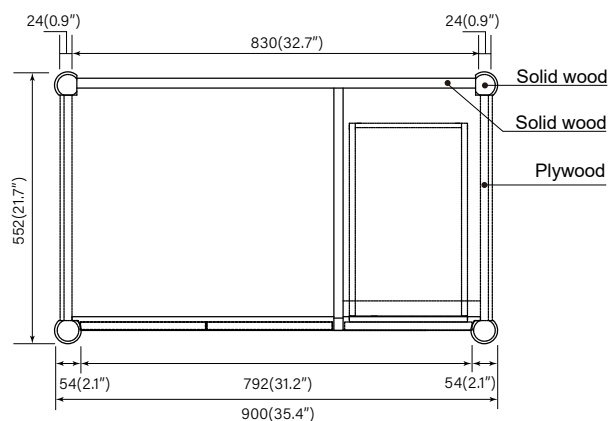
Back



Side



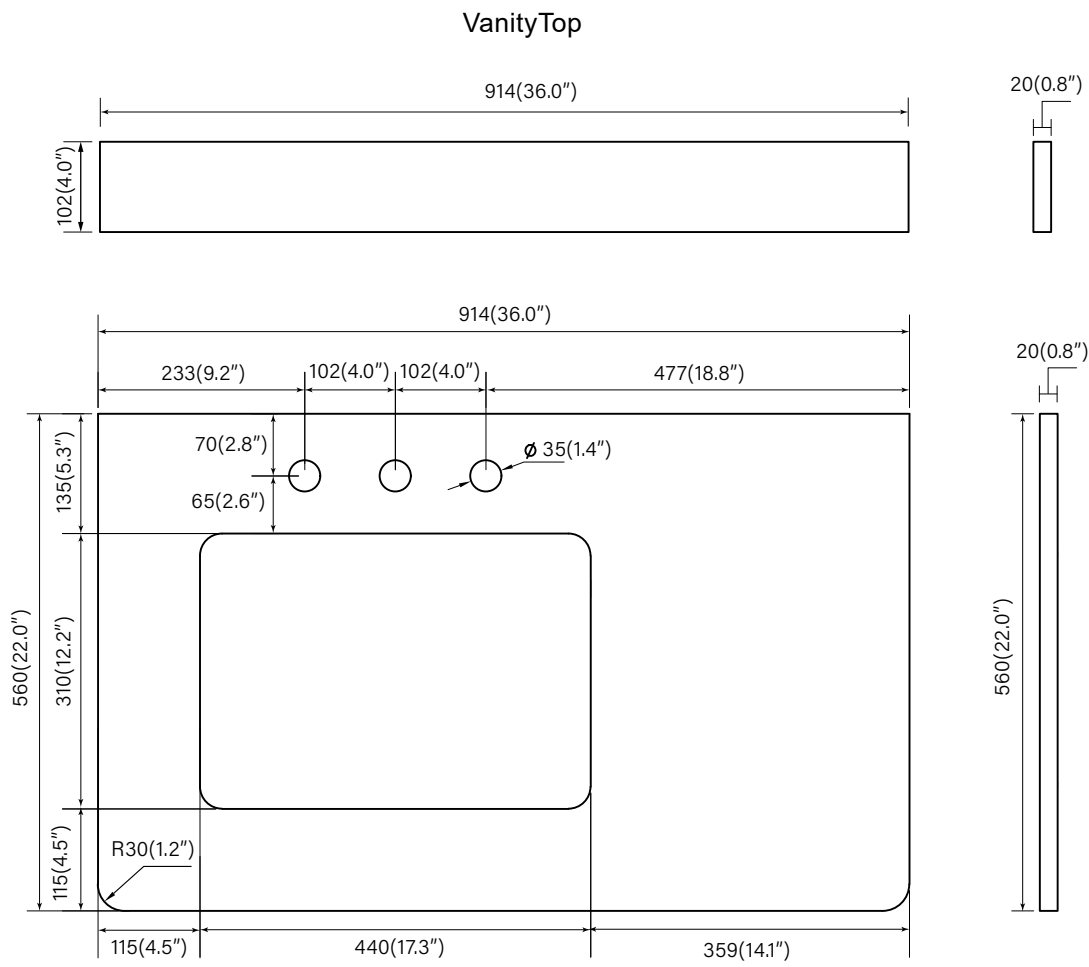
Top



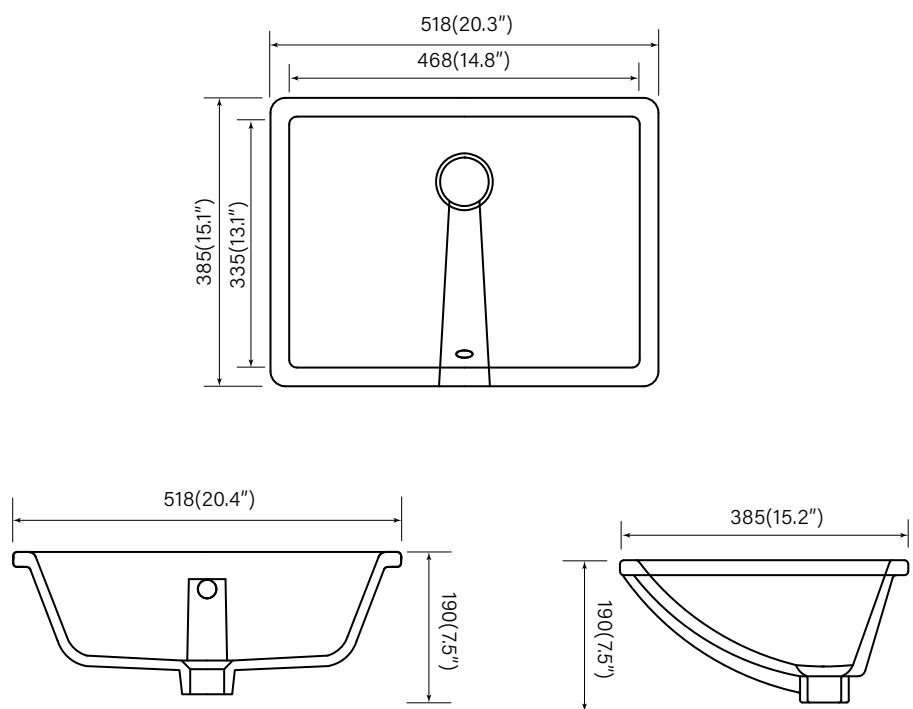
ETHAN 36"

VANITY TOP

With rectangular undermount sink

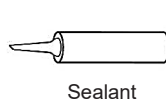


Undermount Sink



Vanity Installation

SUGGESTED TOOLS AND MATERIALS:



Sealant



Measuring tape



Safety glasses



Rag

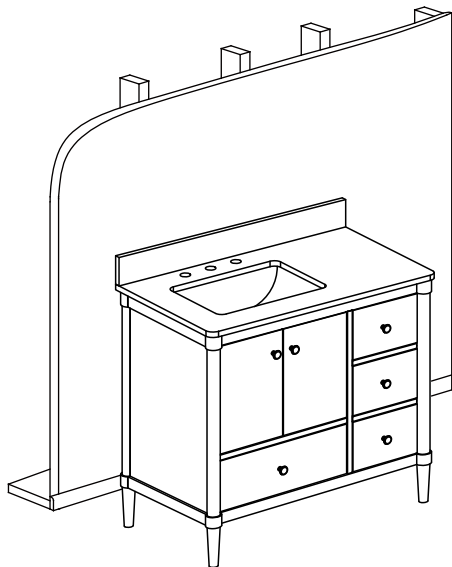


Level

INSTALLATION INSTRUCTLONS

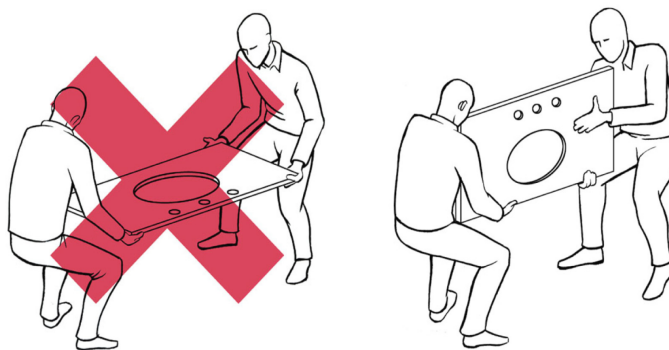
We recommend consulting a professional if you are unfamiliar with installing bathroom fixtures and plumbing .We accept no liability for any damage to the floor,plumbing, vanity cabinet,sink,counter top,or personal injury during installation.

1



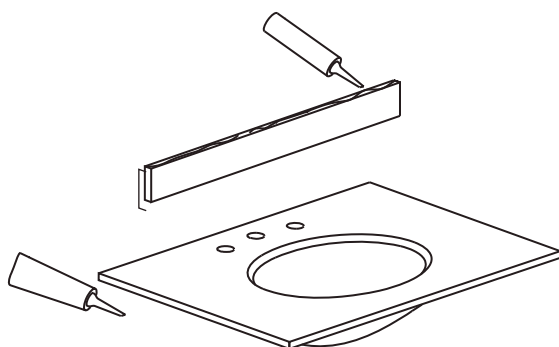
Remove vanity from box and examine vanity for any defects or damage.Carefully place vanity against wall.

2



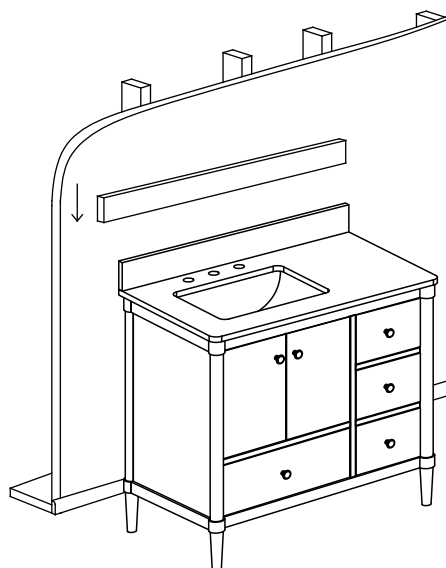
Always use a two man crew,a single person crew is much more likely to break or chip the stone top.

3



Apply bead of quality sealant evenly along the bottom of back splash and the top of the vanity.

4



Finally,place the bottom side of back splash with sealant onto the counter top and check alignment of back splash.