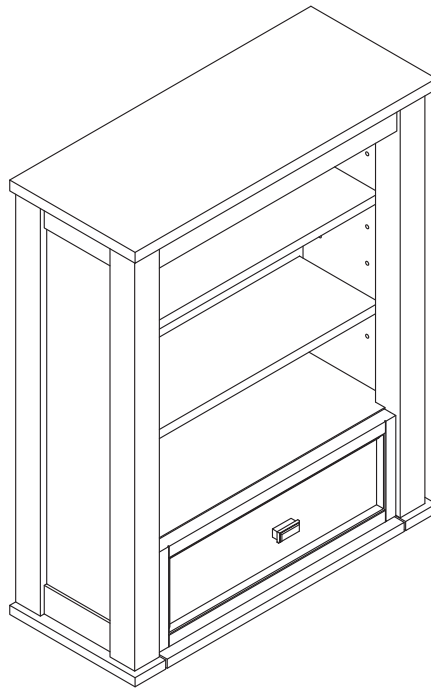


welcoming • sophisticated • inspiring



MODEL NUMBER	DESCRIPTION
1227WC-24-201	24" White Finish Wall Cabinet

---

## WALL CABINET

MODEL #1227WC-24-201

**ATTACH YOUR RECEIPT HERE**

Serial Number \_\_\_\_\_ Purchase Date \_\_\_\_\_

---

**Questions, problems or missing parts?**

Before returning contact us on:

866-439-9800, 8 a.m. - 8 p.m., EST, Monday - Sunday or [ascs@lowes.com](mailto:ascs@lowes.com).

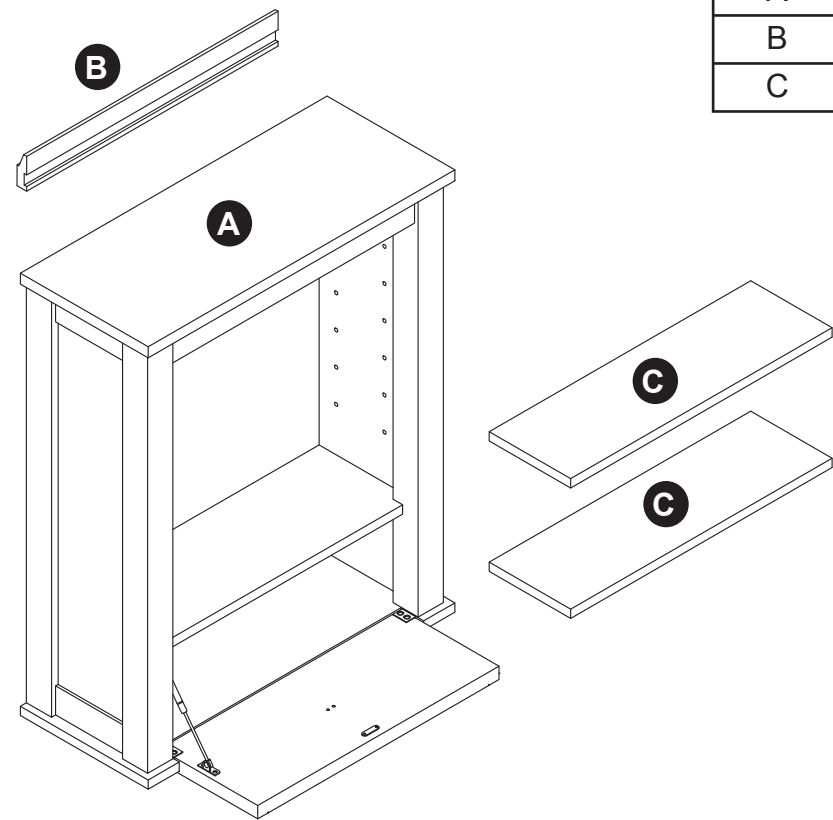
## TABLE OF CONTENTS

---

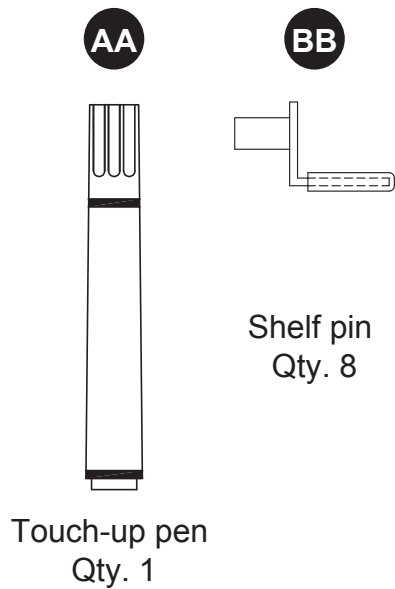
Package Contents.....	3
Hardware Contents.....	3
Safety Information. ....	4
Preparation .....	4
Assembly or Installation Instructions .....	4
Care and Maintenance .....	6
Warranty .....	6
Replacement Parts List .....	7

**PACKAGE CONTENTS**

PART	DESCRIPTION	QUANTITY
A	Cabinet	1
B	Wall Bracket	1
C	Shelf	2



**HARDWARE CONTENTS (NOT SHOWN ACTUAL SIZE)**





## SAFETY INFORMATION

---

Please read and understand this entire manual before attempting to assemble, operate or install this product.



### WARNING

- Some steps are more easily handled with two adults.

### CAUTION

- Before installation, carefully use scissors or utility knife to cut and unwrap all parts. Make sure you DO NOT discard the hardware.
- Use care when installing your new wall cabinet; take your time and follow the installation instructions closely.

**KEEP THESE INSTRUCTIONS FOR FUTURE REFERENCE.**

## PREPARATION

---

Before beginning assembly of product, make sure all parts are present. Compare parts with package contents list and hardware contents list. If any part is missing or damaged, do not attempt to assemble the product.

**Estimated Assembly Time:** 20 minutes (24 hours for silicone caulk to dry).

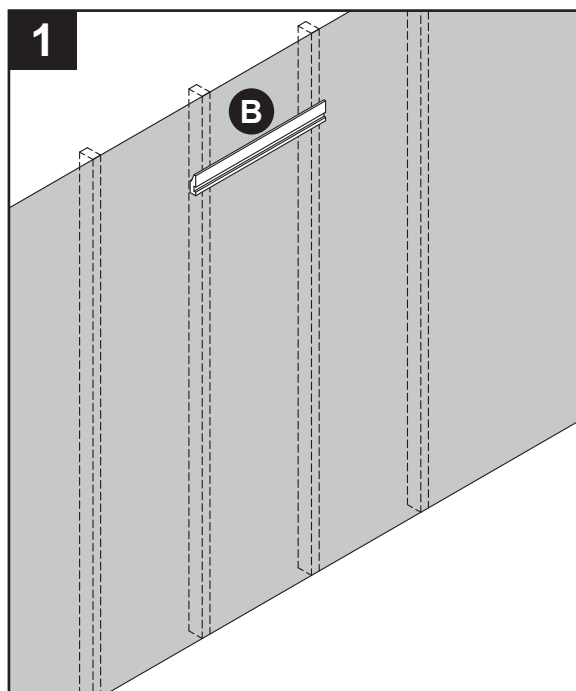
Tools Required for Assembly (not included): Phillips screwdriver, utility knife or scissors, power drill with drill bit

Helpful Tools (not included): Measuring tape, level

## INSTALLATION INSTRUCTIONS

---

1. Locate Wall Bracket (B) and set aside.  
Locate and mark wall stud locations where Cabinet (A) will be placed. Center Wall Bracket (B) in desired level location off the floor and mark locations where Wall Bracket (B) meets the location of the wall studs.

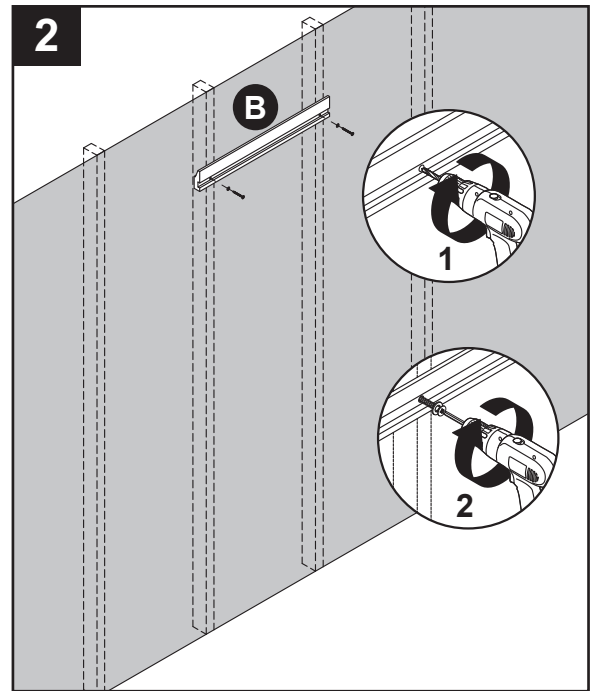


## INSTALLATION INSTRUCTIONS

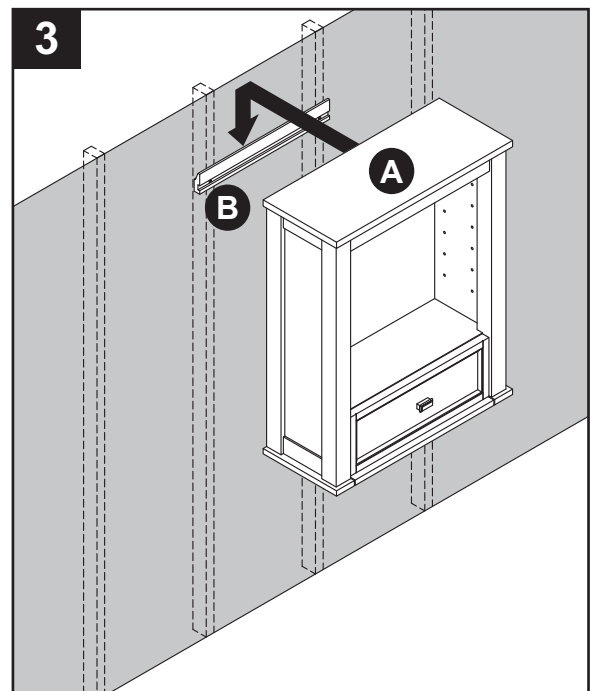
2. Using hardware appropriate for your wall type (not included), secure the Wall Bracket (B) to the wall into preferably 2 wall studs. Use hardware such as a cabinet screw or toggle bolt depending on your wall type. Make sure the Wall Bracket (B) is level and centered well to the desired location of the Cabinet (A). Be careful not to disturb any plumbing or electrical lines that may be concealed in the wall.

**!IMPORTANT SAFETY STEP!**

It is critical to have a strong secure connection to the wall before continuing to the next step.



3. With the help of another adult, carefully lower the Cabinet (A) down onto the Wall Bracket (B). Be sure the Cabinet (A) is secure to the wall before letting go.



## INSTALLATION INSTRUCTIONS

---

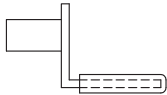
4. Insert shelf pins (BB) at desired height, ensuring they are level. Place shelves (C) on top of shelf pins (BB).

### Hardware Used

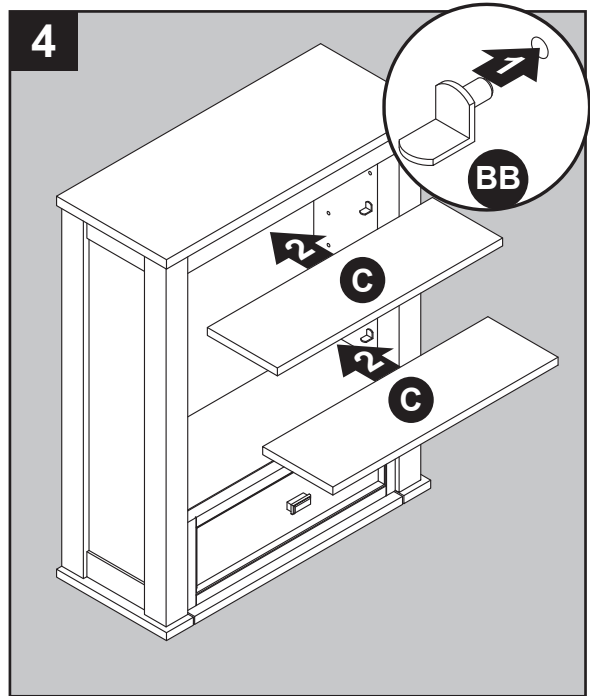
---

**BB**

Shelf Pin



x 8



## CARE AND MAINTENANCE

---

- Dust the Wall cabinet regularly with a soft, non-lint producing cloth or household dusting product.
- You can clean the Wall cabinet with a gentle, non-abrasive household cleaner.
- Make sure to dry the wood immediately with a soft cloth or towel.
- Tips for using touch-up pen (AA): For scratches, stroke in direction of scratch. Rub off excess colorant promptly with a soft cloth.

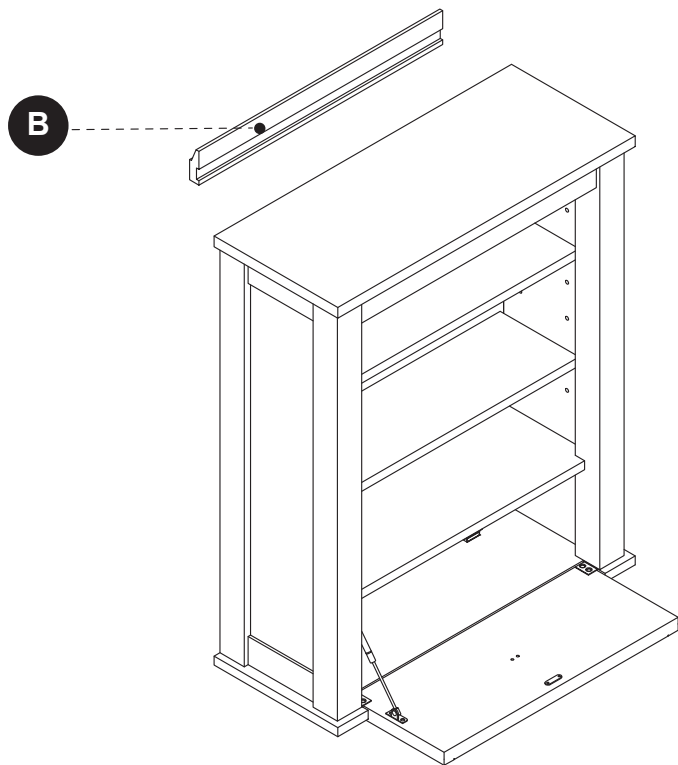
## WARRANTY

---

The manufacturer warrants this item against defects in materials and workmanship for a period of one (1) year from the date of original retail purchase. This warranty applies only to the original purchaser. This warranty does not apply to any damage on the product by accident, misuse, or modified, improper installation or by affixing accessories not produced by the manufacturer. The manufacturer is not accountable whatsoever for product installation during the warranty period. There is no further expressed warranty. The manufacturer shall not be legally responsible for incidental, consequential or special damages arising at or in connection with product use or performance except as may otherwise be accorded by law. The manufacturer disclaims any and all implied warranties.

**REPLACEMENT PARTS LIST FOR 1227WC-24-201**

For replacement parts, call our customer service department at 866-439-9800, 8 a.m. - 8 p.m., EST, Monday - Sunday.



AA

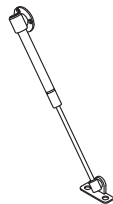
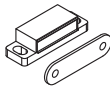
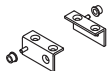
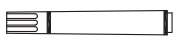
BB

CC

DD

EE

FF



PART	DESCRIPTION	PART#
B	Wall Bracket	1227WC-24-201-001
AA	Touch-up pen	OF-0010
BB	Shelf pin	B1044
CC	Drawer handle	CF-32-003-BN
DD	Flip Door Hinge	PU17-1167FM-II/JJ/LL
EE	Door Catch	
FF	Piston With Screw	