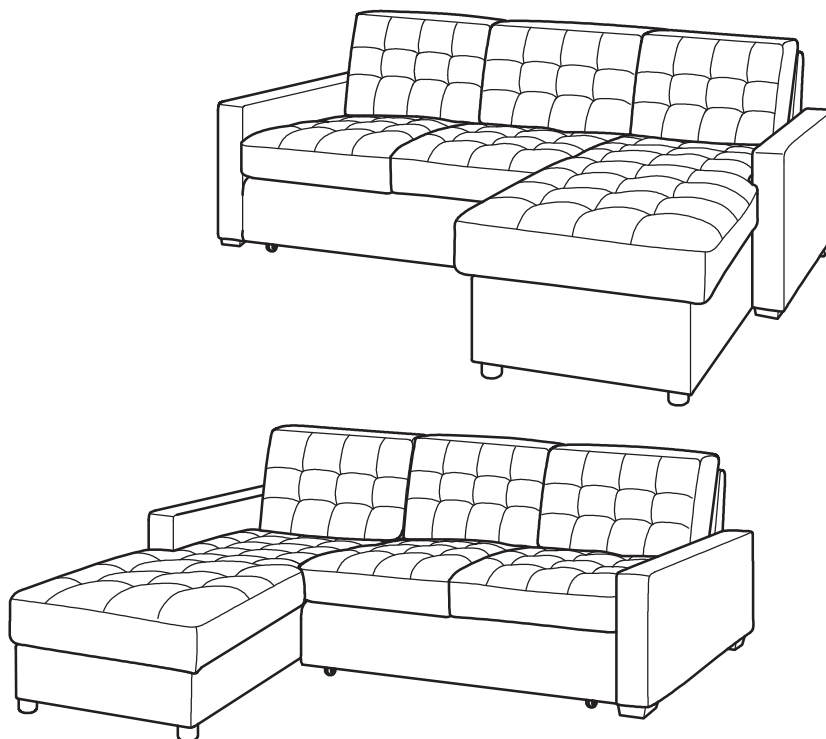




Dream Convertibles®

# BRAXTON

## ASSEMBLY INSTRUCTIONS



DO NOT RETURN PRODUCT TO THE STORE

individual stores do not stock parts.

If a part is missing or damaged, call our toll - free customer service line.

**Need parts or assistance?**

Please call :

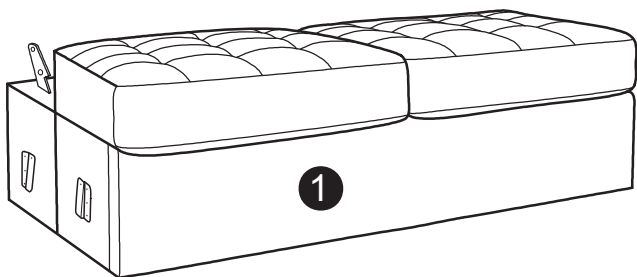
**866-626-7826**

For prompt, reliable service; please have your assembly manual ready.

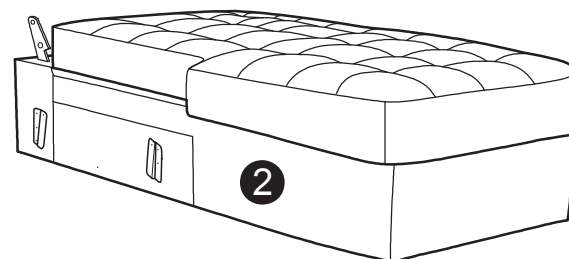
### WARNING

- This product has been designed for seating three (3) average adults. To prevent injury and damage to this unit, PROHIBIT jumping on it.
- This product is designed for home use and not intended for commercial use.
- Children under the age of 5, small infants and babies should not sleep alone on this product for safety reasons.
- Recommended # of people needed for handling: 2 (however it is always better to have an extra hand.)
- THIS INSTRUCTION BOOKLET CONTAINS **IMPORTANT** SAFETY INFORMATION. PLEASE READ AND KEEP FOR FUTURE REFERENCE.

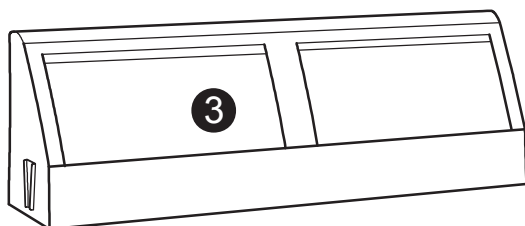
## PARTS



Loveseat Body  
QTY:1



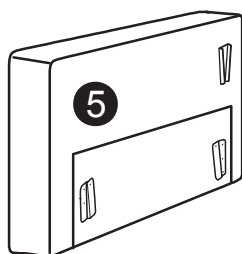
Chaise Body  
QTY:1



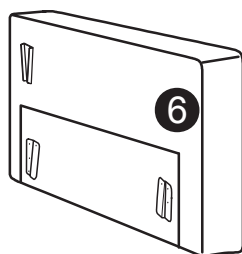
Loveseat Backrest  
QTY:1



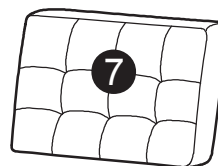
Chaise Backrest  
QTY:1



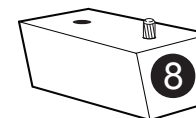
Right Facing Arm  
QTY:1



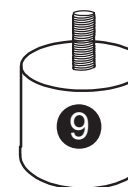
Left Facing Arm  
QTY:1



Back Cushions  
QTY:3



Arm Legs  
QTY:4



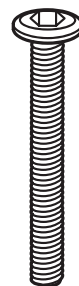
Chaise Legs  
QTY:4

---

## HARDWARE



A  
Hex Key  
M5  
QTY : 1 PC

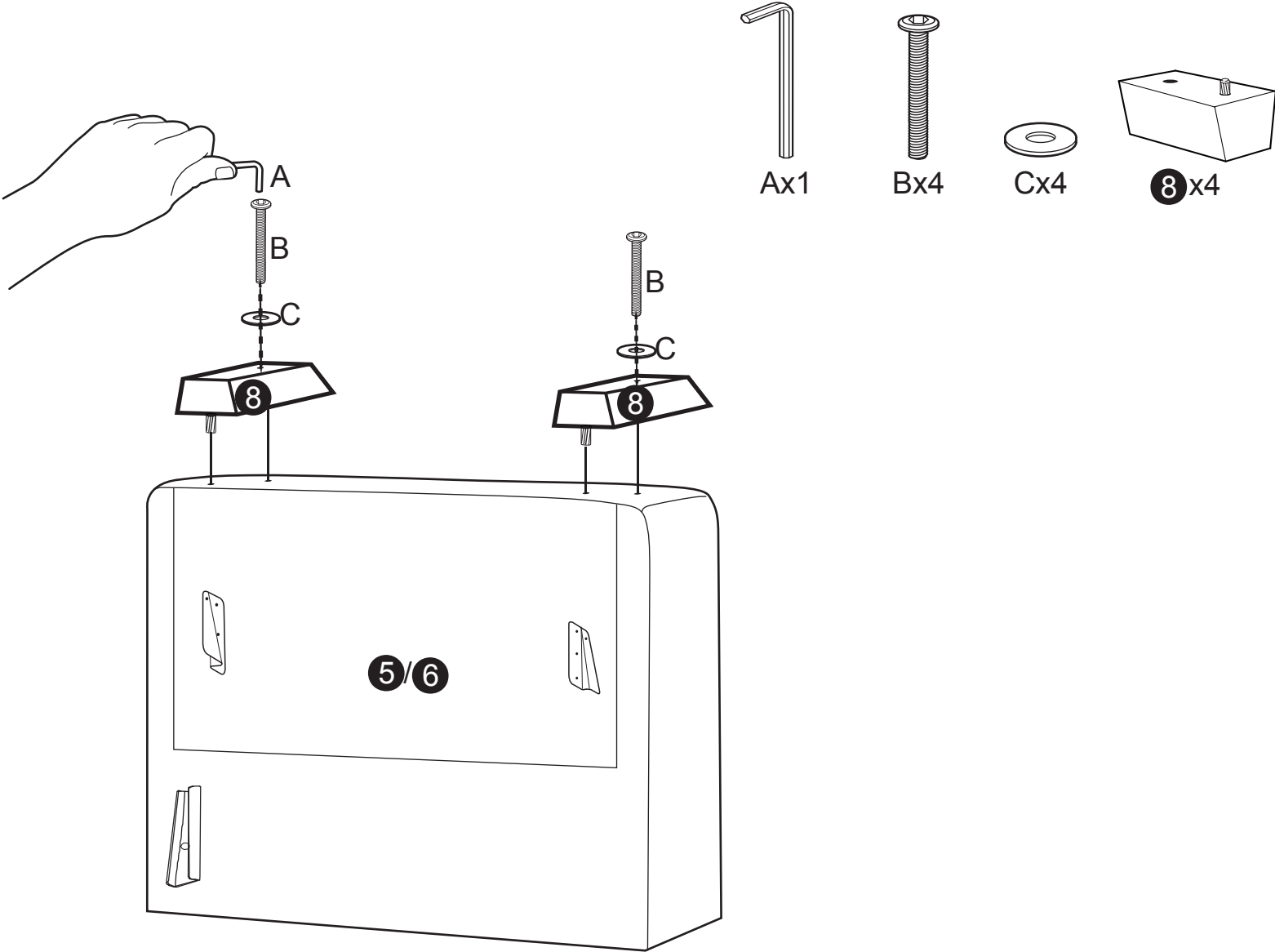


B  
Bolt  
M8 x 50mm  
QTY : 4 PCS



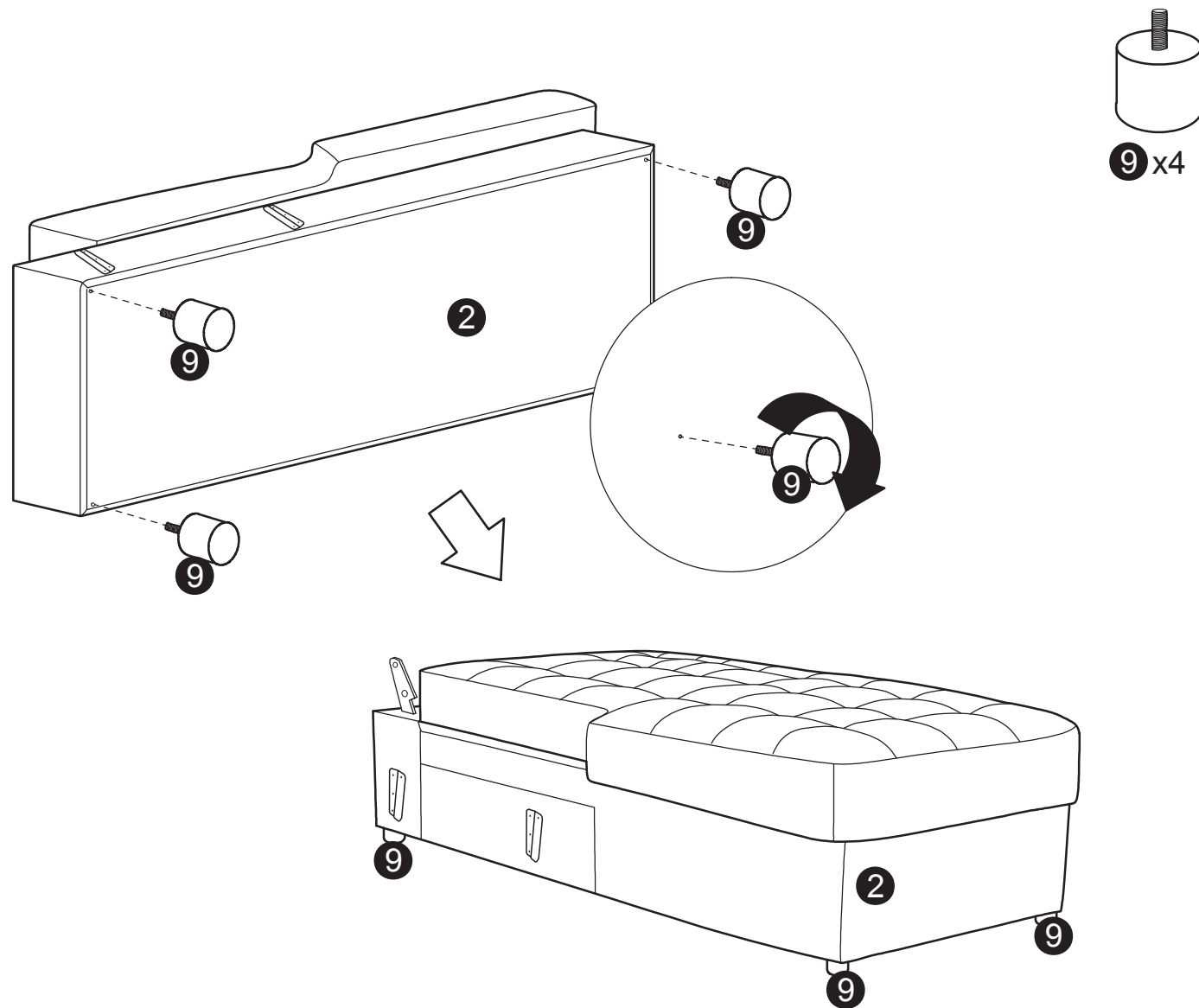
C  
Washer  
M8 x 17mm  
QTY : 4 PCS

Step 1 :



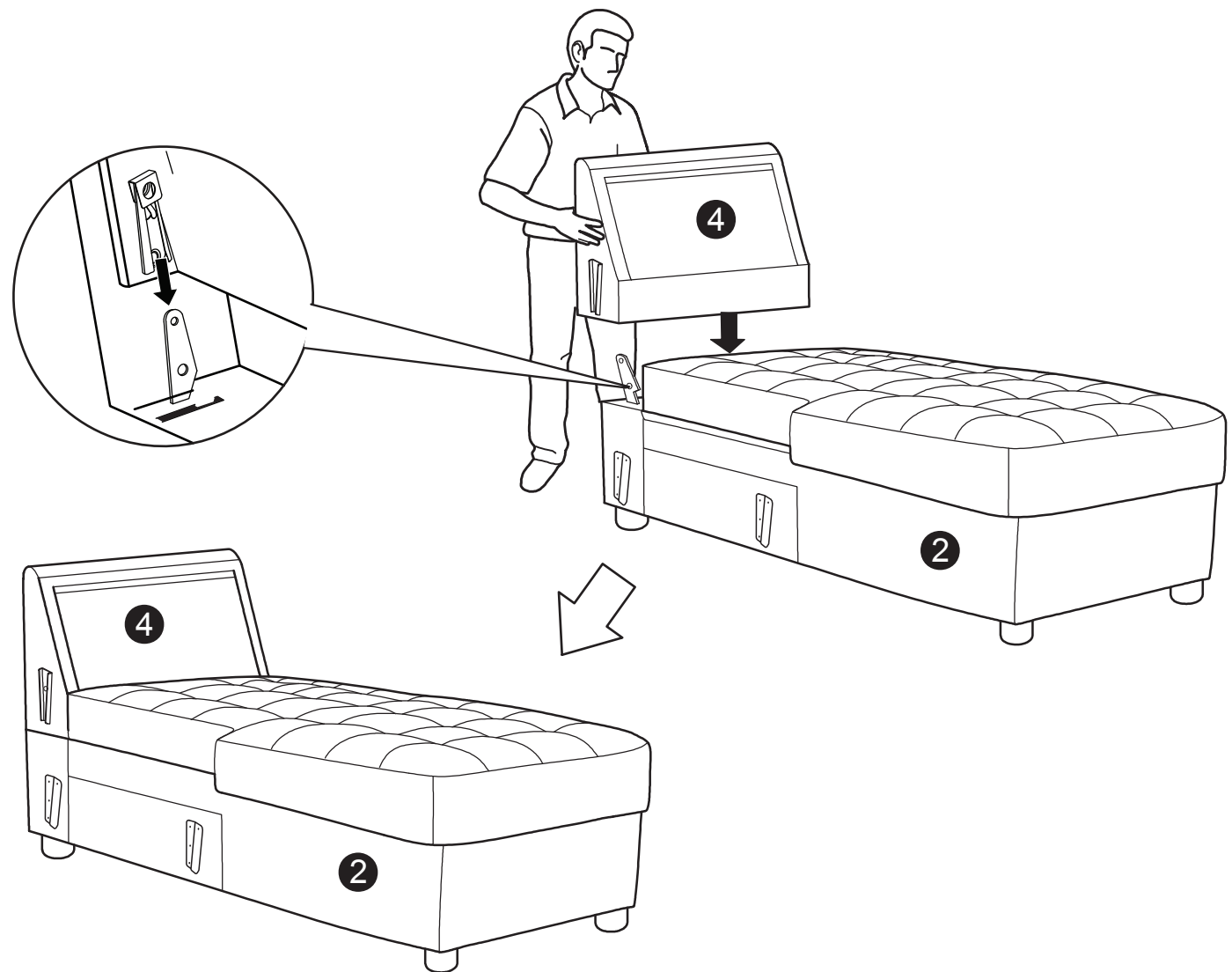
---

Step 2 :



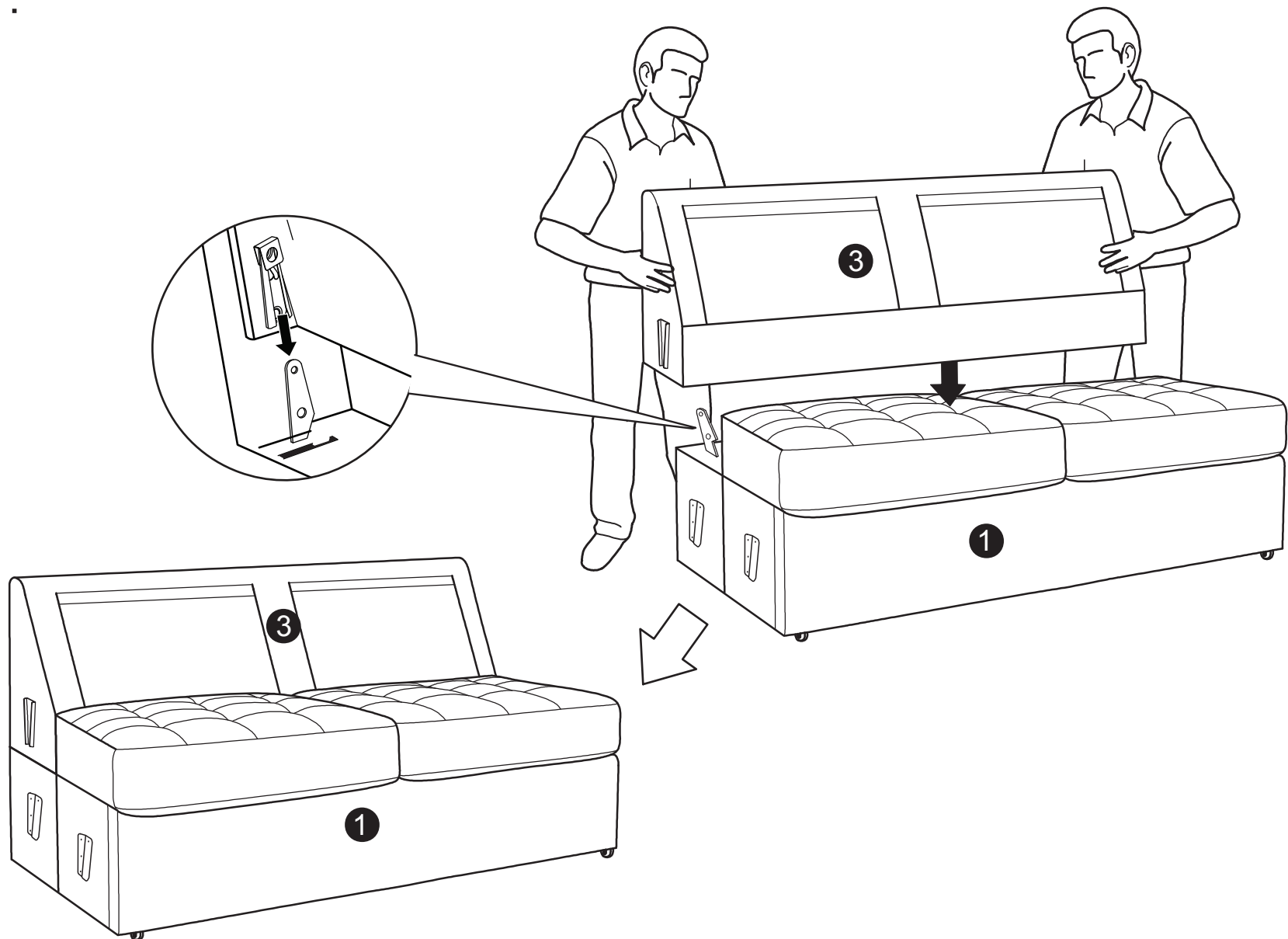
---

## Step 3 :

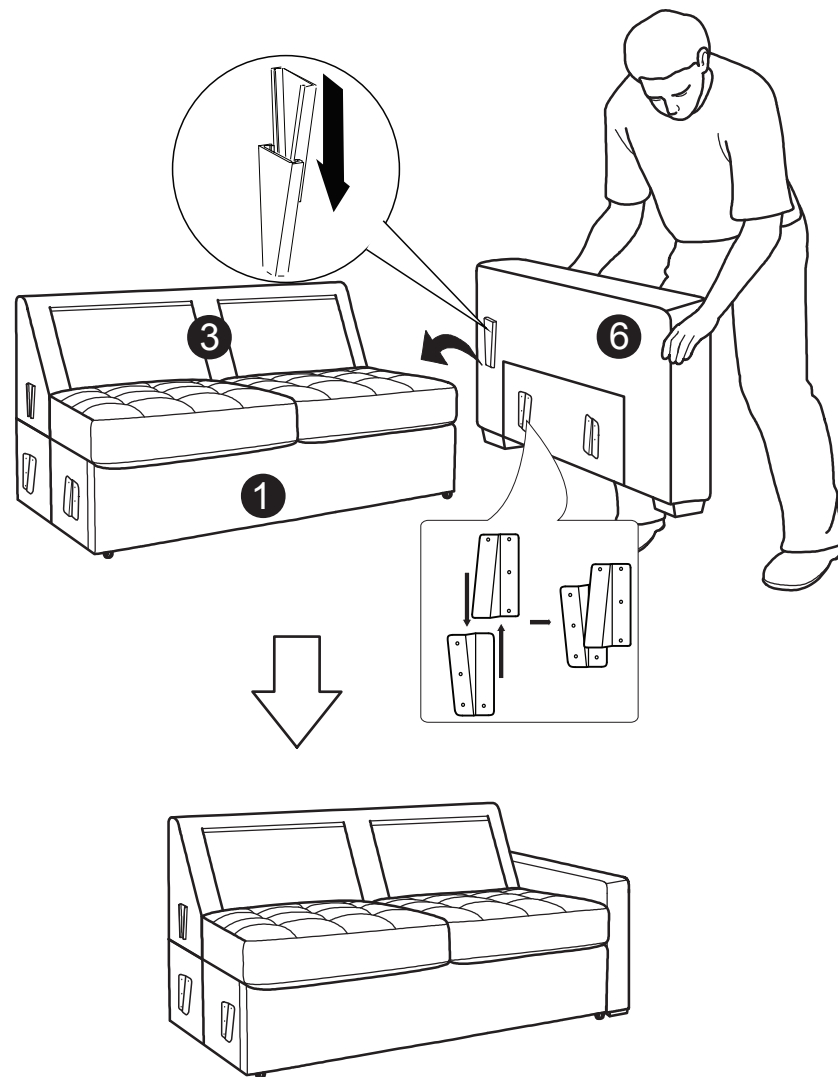
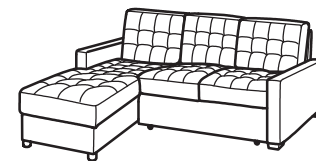
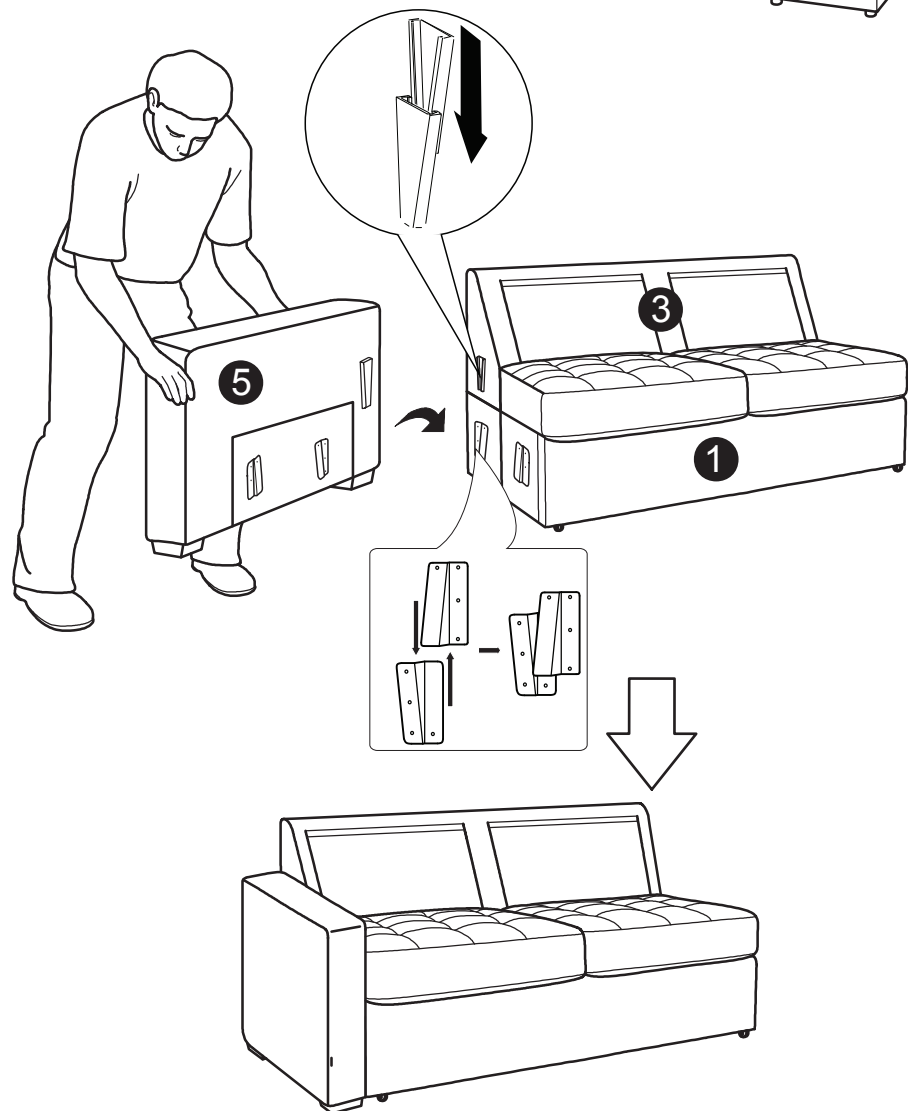
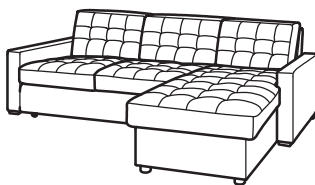


---

Step 4 :

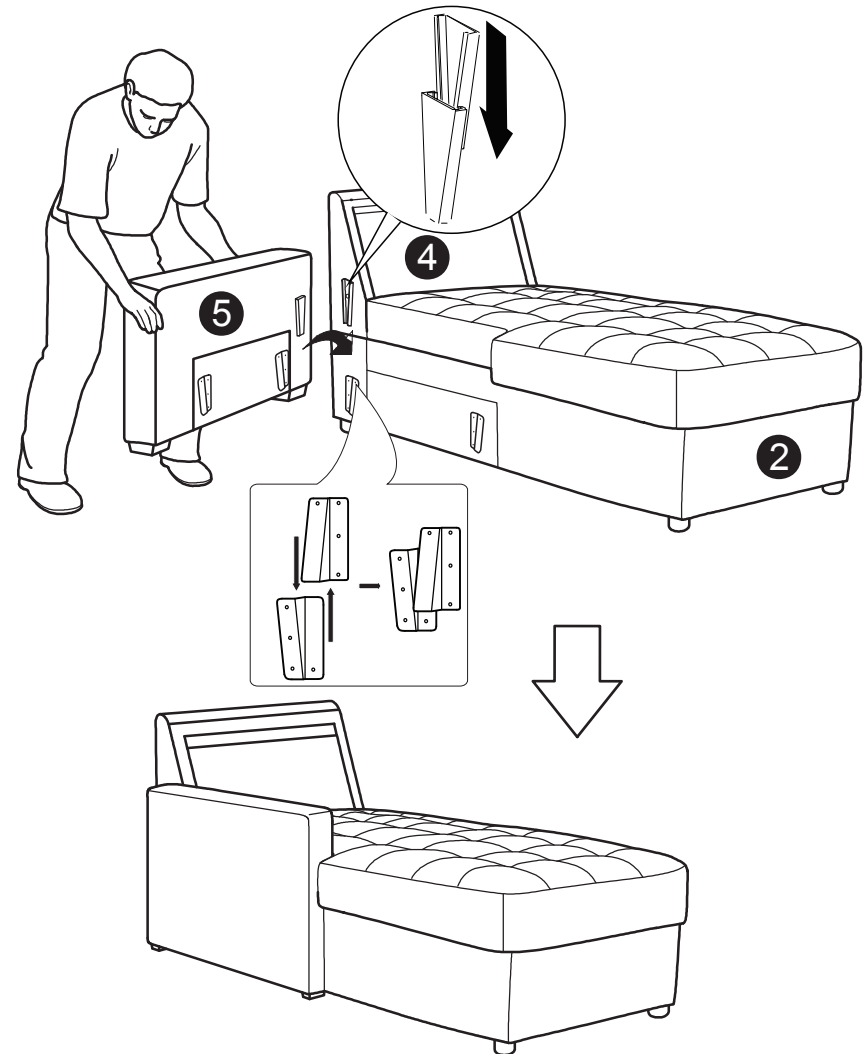
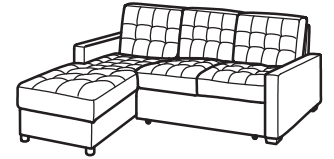
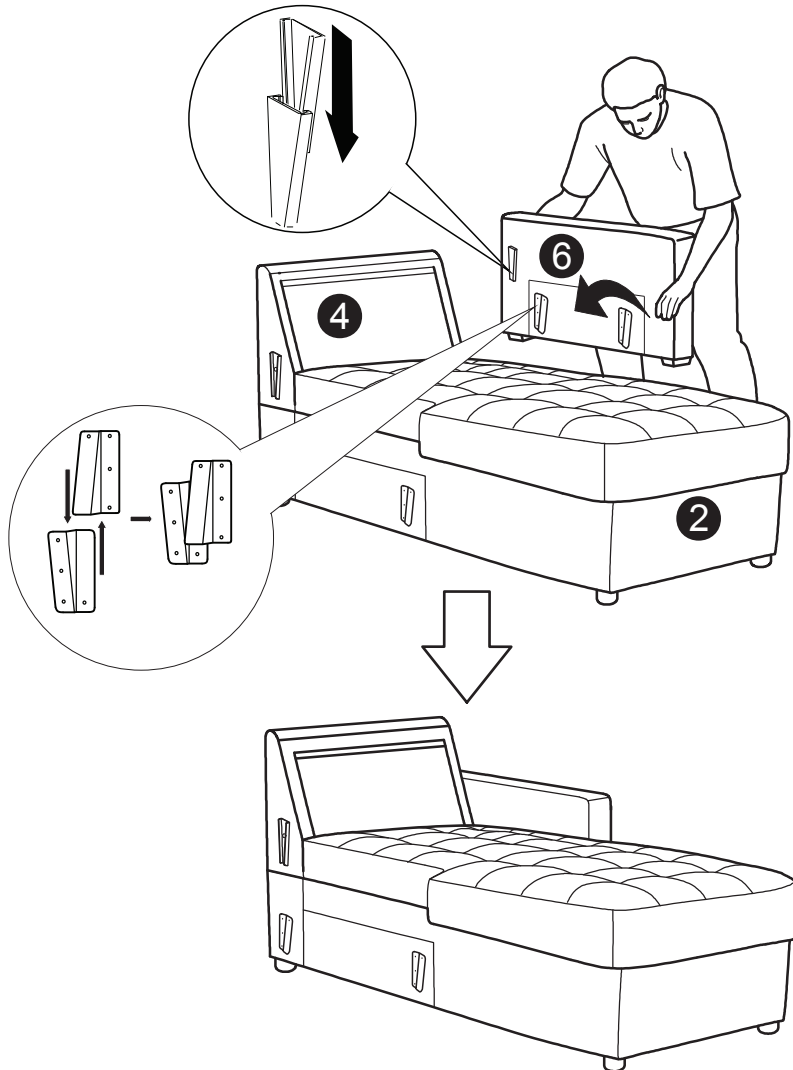
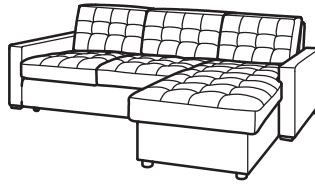


Step 5 :

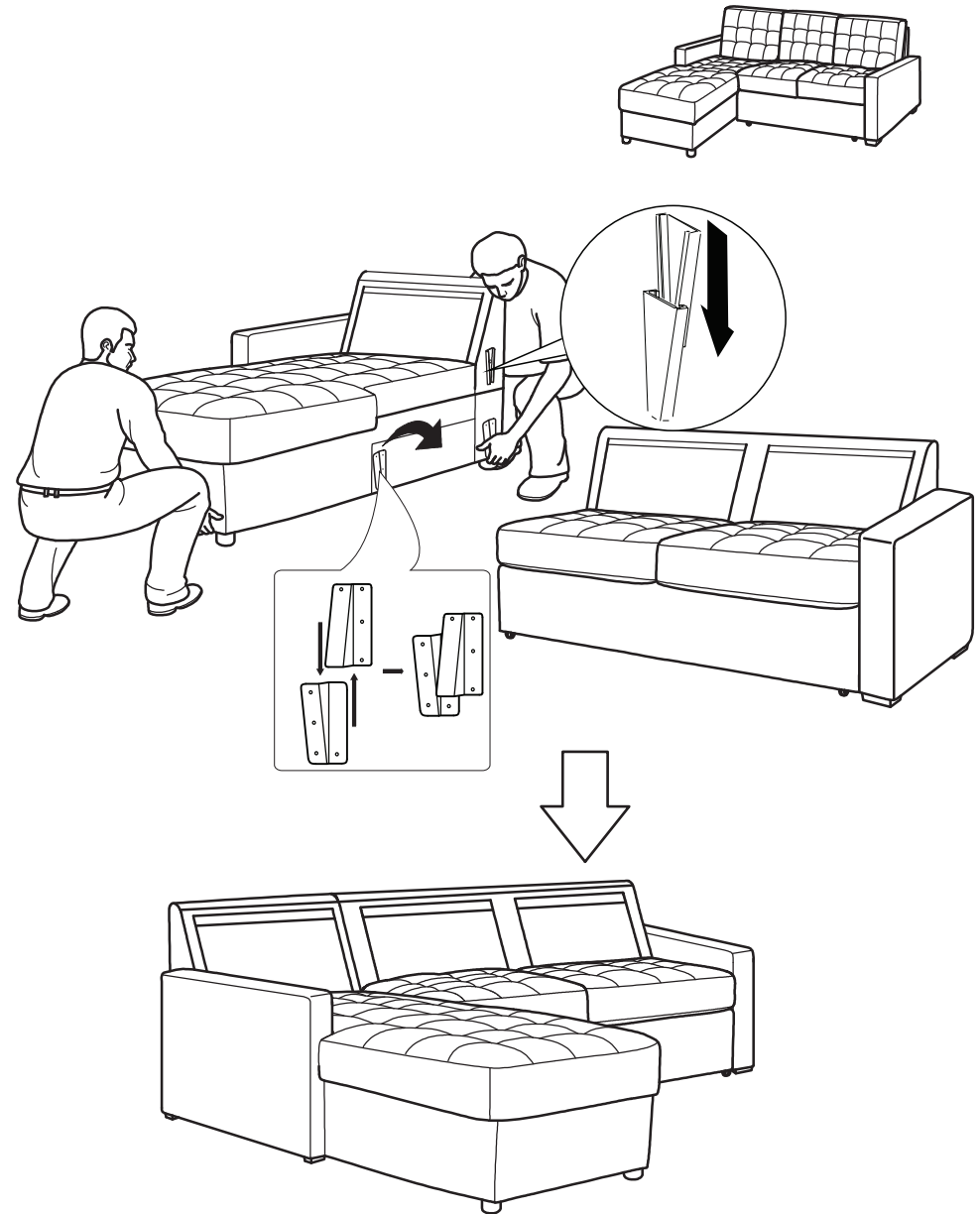
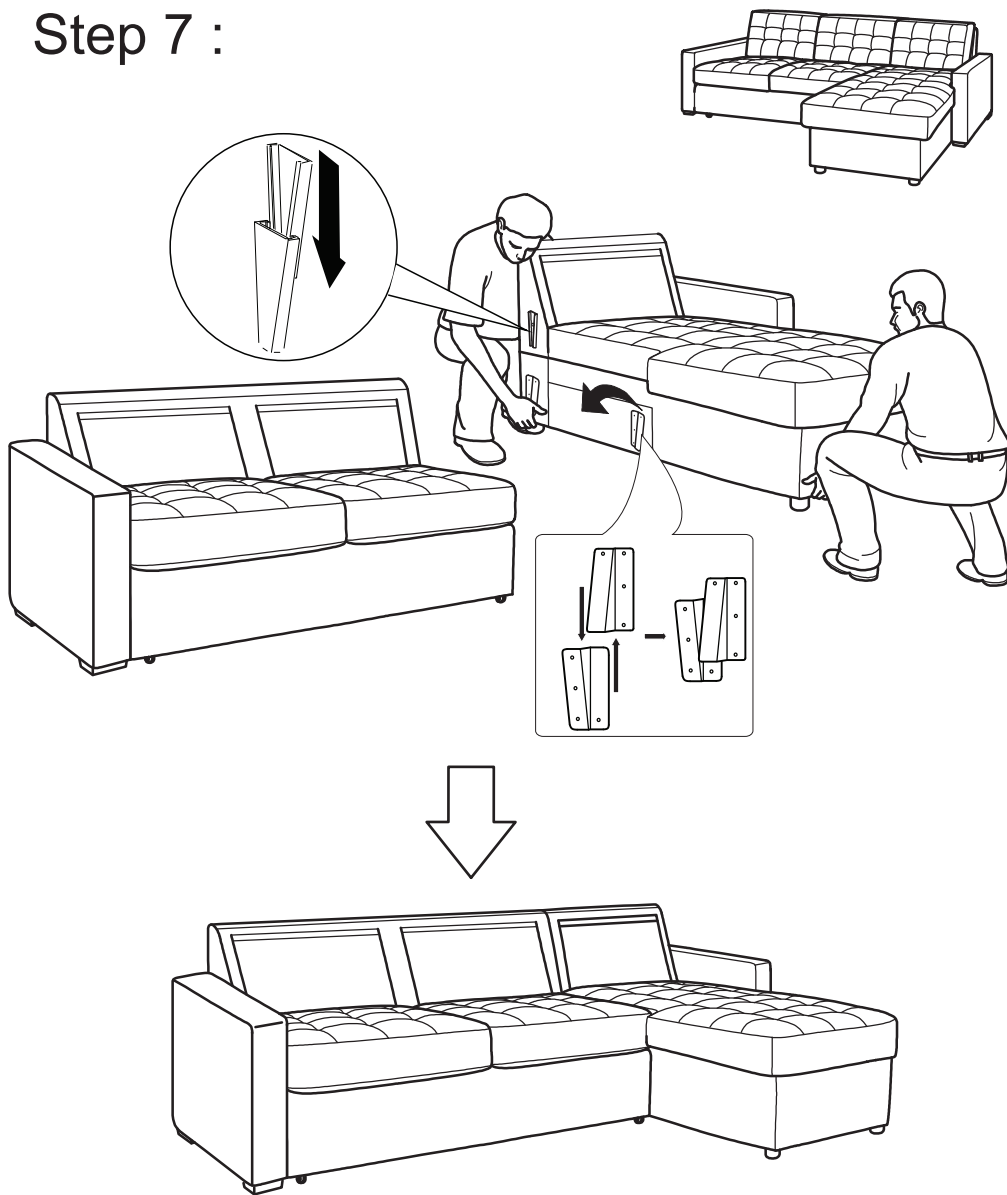




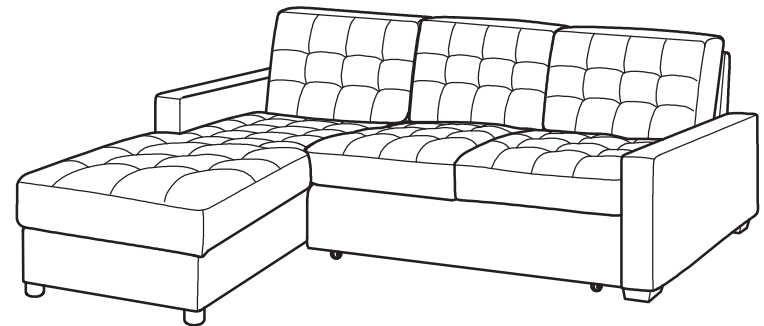
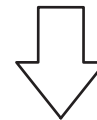
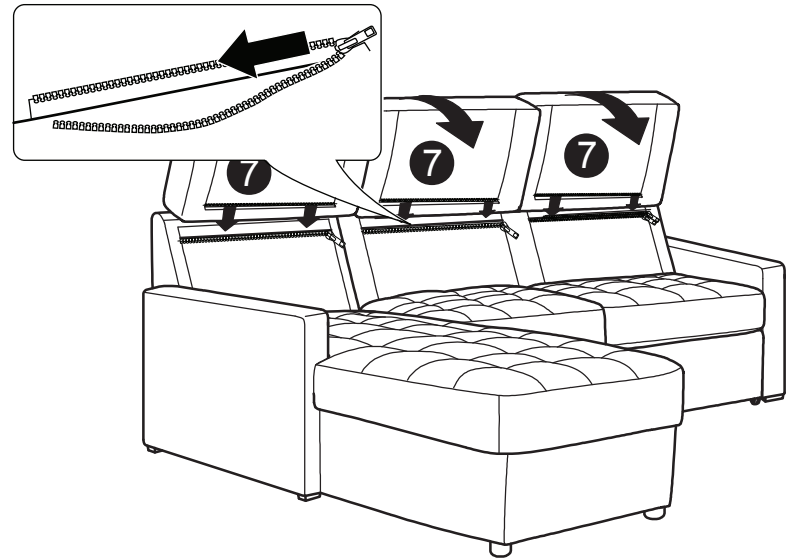
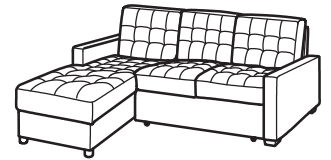
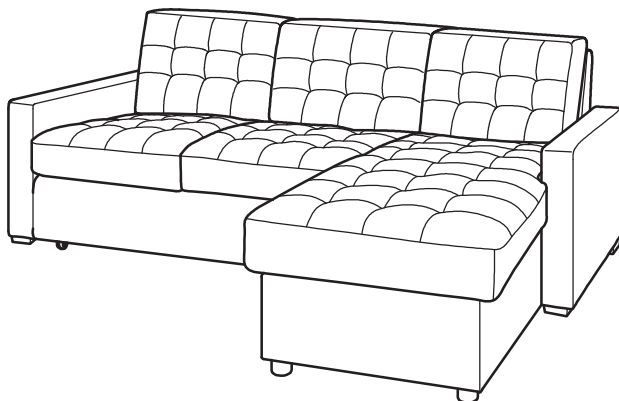
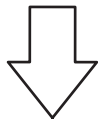
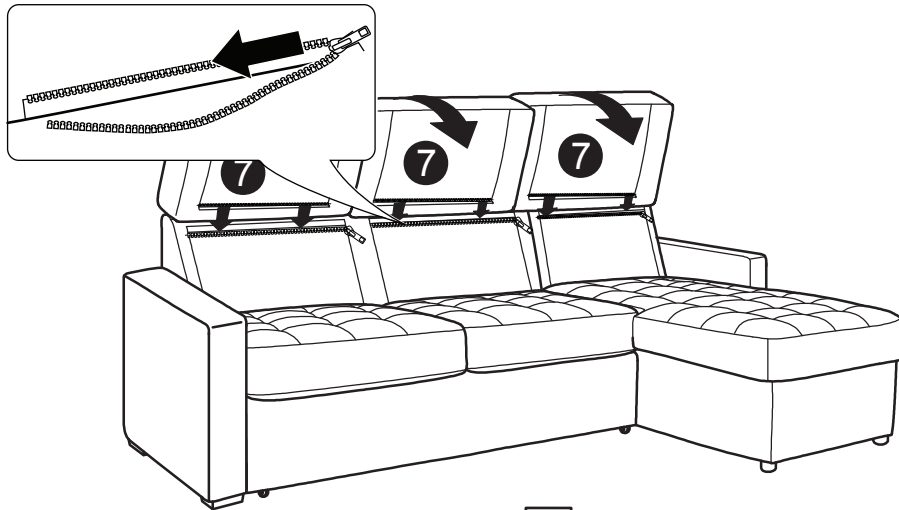
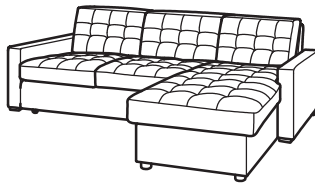
## Step 6 :



## Step 7 :



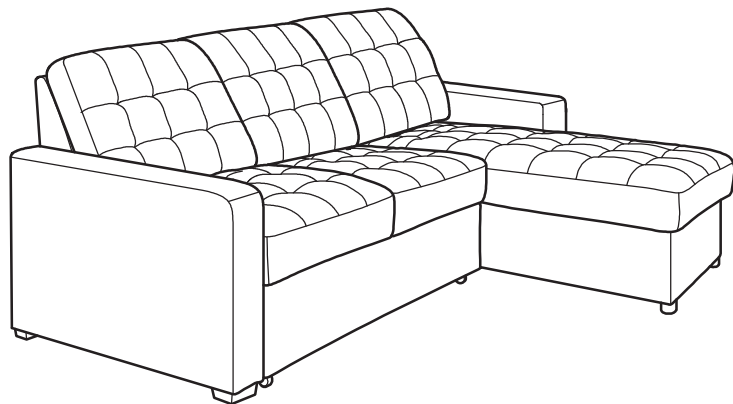
Step 8 :



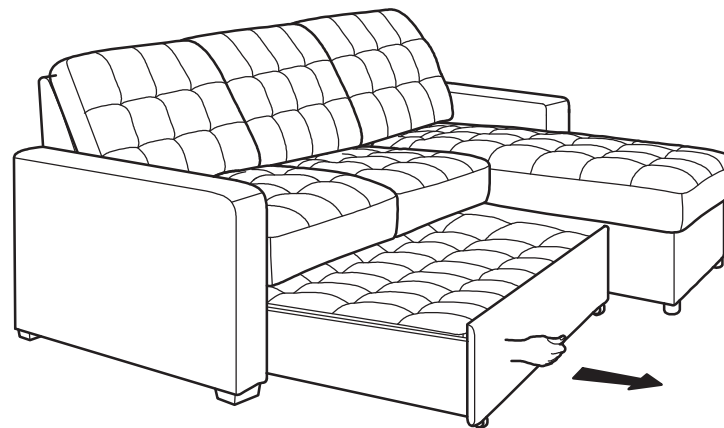
---

## FUNCTIONS :

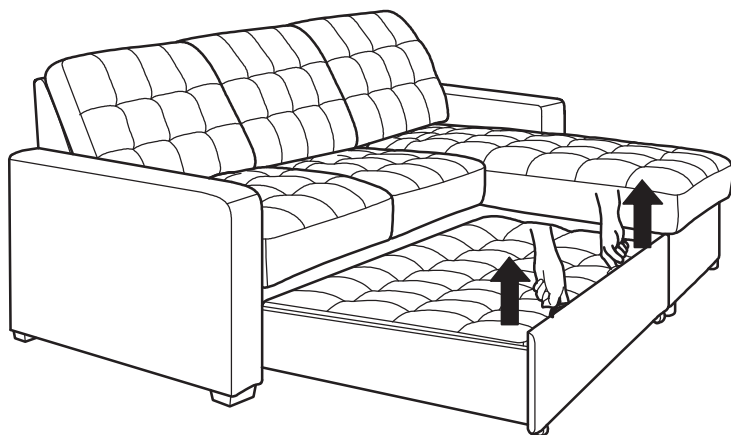
1



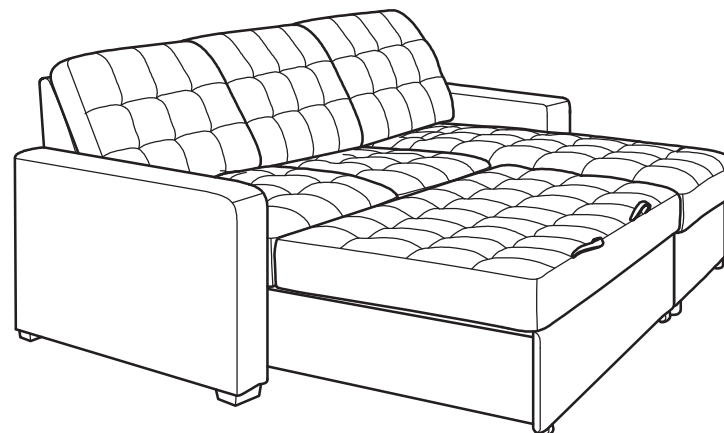
2



3



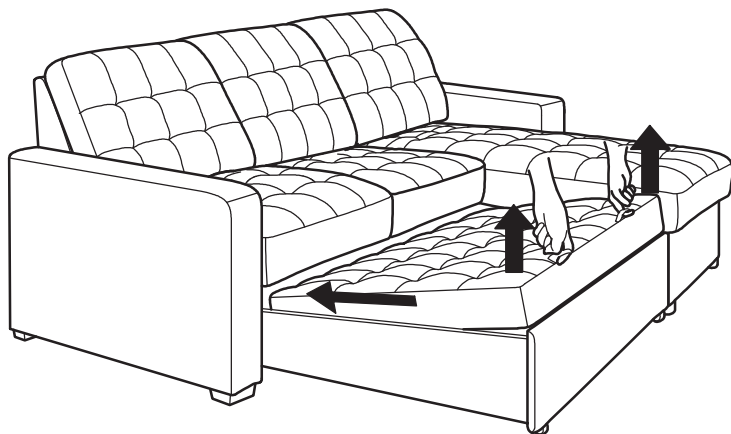
4



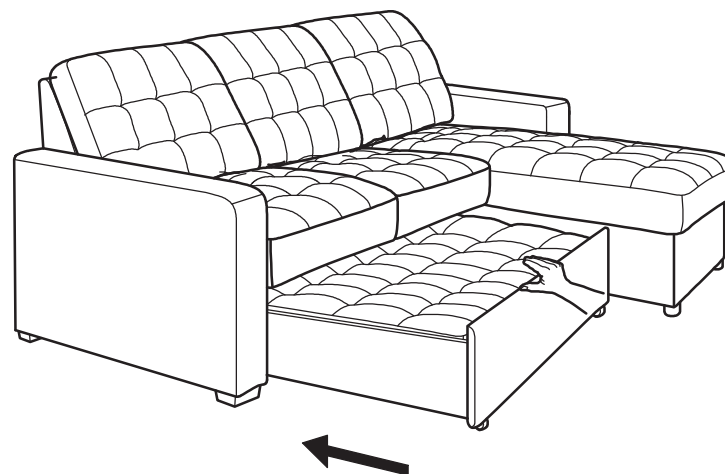
---

## FUNCTIONS :

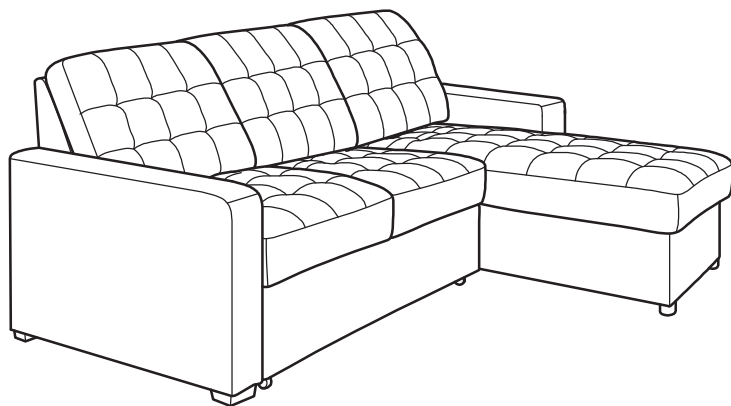
5



6



7



8

