



STYLE SELECTIONS and logo design are trademarks or registered trademarks of LF, LLC. All rights reserved.

ITEM #0404278

0404279

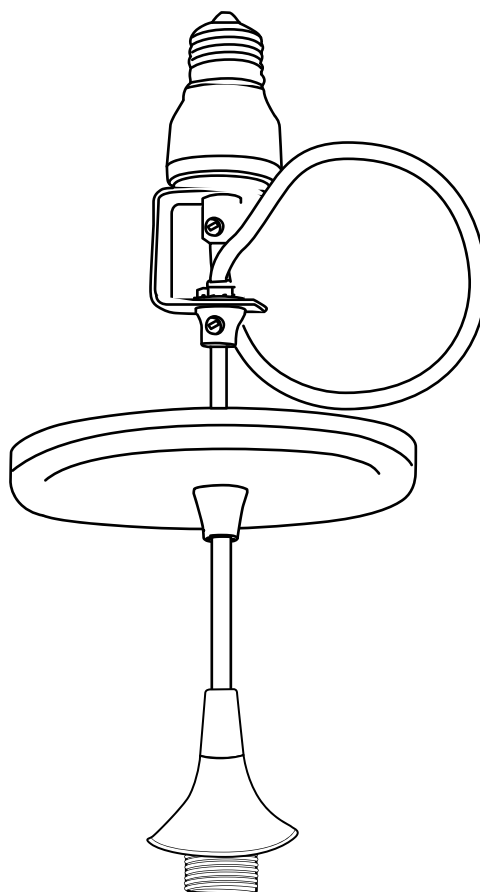
RECESSED LIGHT CONVERSION KIT PENDANT FITTER

MODEL #MPA-2JBZ

MPA-2PNK

Español p. 8

**ATTACH YOUR RECEIPT HERE
ADJUNTE SU RECIBO AQUÍ**



Intertek

3187807

APPROVED FOR USE IN
DAMP LOCATIONS

Purchase Date _____



Questions, problems, missing parts? Before returning to your retailer, call our customer service department at **1-877-888-8225**, 8 a.m. - 8 p.m., EST, Monday - Sunday. You could also contact us at partsplus@lowes.com or visit www.lowespartsplus.com.

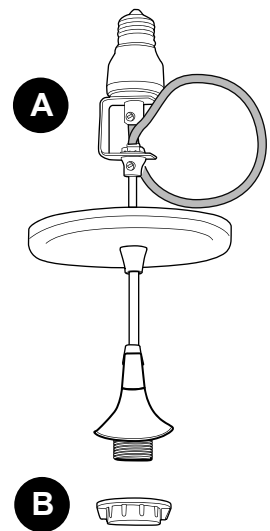
SM21489

TABLE OF CONTENTS

Package Contents	2
Safety Information	2
Preparation	3
Assembly Instructions	4
Care and Maintenance	7
Troubleshooting	7
Warranty	7

PACKAGE CONTENTS

PART	DESCRIPTION	QUANTITY
A	Fixture	1
B	Socket Ring (preassembled to fixture (A))	1



! SAFETY INFORMATION

READ AND SAVE THESE INSTRUCTIONS.

! DANGER

- For your protection and safety, carefully read and understand the information provided in this manual completely before attempting to assemble, install or operate this product. Failure to do so could lead to electrical shock, fire or other injuries that could be hazardous or even fatal.
- DO NOT connect this fixture to an electrical system that does not provide a means for equipment grounding. Never use a fixture in a two-wire system that is not grounded. Installing a fixture into an electrical system not having a proper grounding means could cause metal parts of the fixture to carry electrical currents if any of the fixture wires, wire connections or splices were to become broken, cut or loose during the mounting or normal operation of the fixture. Under this condition, anyone coming in contact with the fixture would be subject to electrical shock, which could cause serious injury or death.

SAFETY INFORMATION

DANGER

- DO NOT connect the bare or green insulation fixture ground wire to the black (HOT) current-carrying wire or the white neutral house wire. Connection of the bare or green fixture ground wire to the black or white house wires may cause metal parts of the fixture to carry electrical currents. Under this condition anyone coming in contact with the fixture will receive electrical shock, which could cause serious injury or death.
- DO NOT damage or cut the wire insulation (covering) during installation of fixture. DO NOT permit wires to contact any surface having a sharp edge. To do so may damage or cut the wire insulation, which could cause serious injury or death from electrical shock.

WARNING

- All electrical connections must be in agreement with local codes and ordinances, the National Electric Code (NEC) and ANSI/NFPA 70-1999. Contact your municipal building department to learn about your local codes, permits and/or inspections. Risk of fire - most dwellings built before 1985 have supply wire rated for 140°F. Consult a qualified electrician before installation.
- To avoid personal injury, the use of gloves may be necessary while handling fixture parts with sharp edges.
- If the maximum wattage for the recessed light fixture in which you are installing the fixture is less than 60 watts, you may only use the maximum wattage indicated on that recessed light fixture. Failure to do so may result in fire or electrical shock.
- To reduce the risk of fire or electrical shock, DO NOT use a bulb with a higher wattage than 60 watts even if the recessed light fixture into which you are installing the fixture may indicate that it can accept a higher maximum wattage.
- To reduce the risk of damage to the fixture, DO NOT use power tools to assemble any part of the fixture.

CAUTION

- TURN OFF ELECTRICITY at main fuse box (or circuit breaker box) before beginning installation by removing the fuse (or switching the circuit breaker off).
- If you are not sure the lighting system has a grounding means, DO NOT attempt to install this fixture. Contact a qualified, licensed electrician for information regarding the proper grounding methods as required by the local electrical code in your area.
- All fixtures must be mounted to an outlet box that is supported by the building structure.
- If a dimmer control switch is used with this fixture, obtain professional advice to determine the correct type to use as well as the electrical rating required.

PREPARATION

Before beginning assembly of product, make sure all parts are present. Compare parts with package contents list. If any part is missing or damaged, do not attempt to assemble the product.

Estimated Assembly Time: 60 minutes

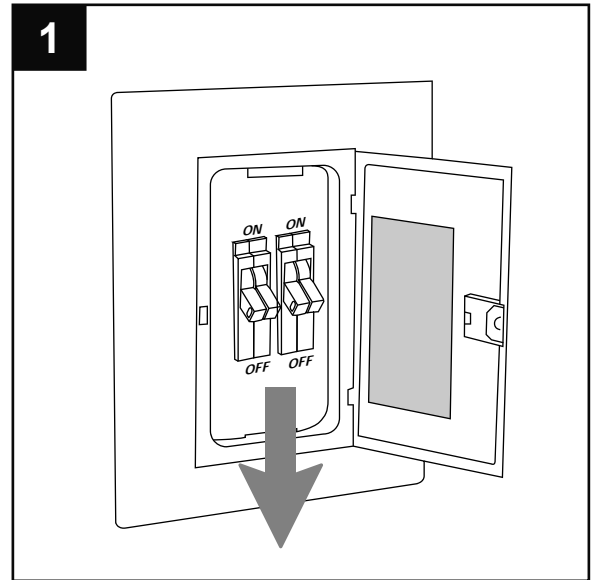
Tools Required for Assembly (not included): Flathead screwdriver, safety glasses, stepladder

Helpful Tools (not included): A/C tester light, do-it-yourself guide, soft cloth

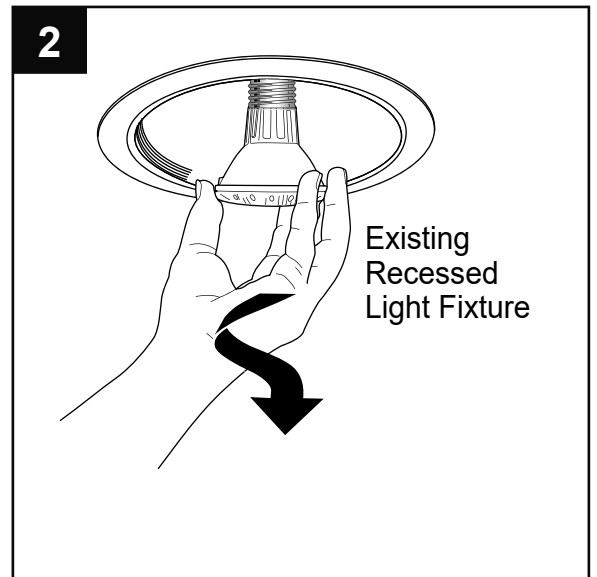
ASSEMBLY INSTRUCTIONS

1. Turn off circuit breakers and wall switch to the fixture supply line leads.

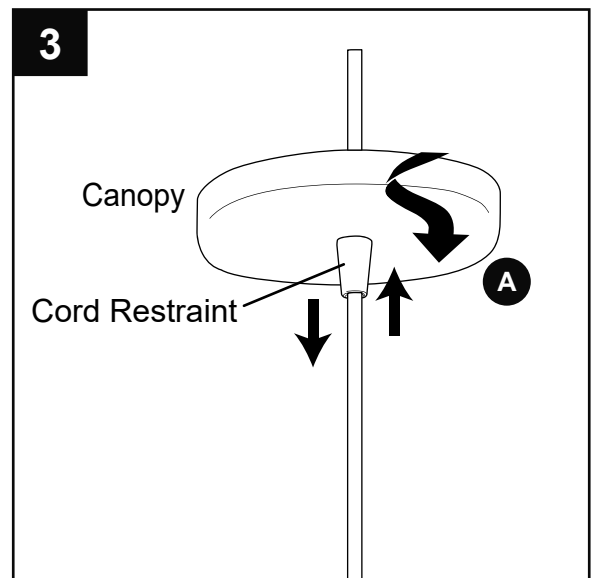
⚠ DANGER: Failure to disconnect power supply prior to installation may result in serious injury or death.



2. Remove bulb from existing fixture.



3. Loosen cord restraint under canopy on fixture (A) to allow canopy to move down the cord.



ASSEMBLY INSTRUCTIONS

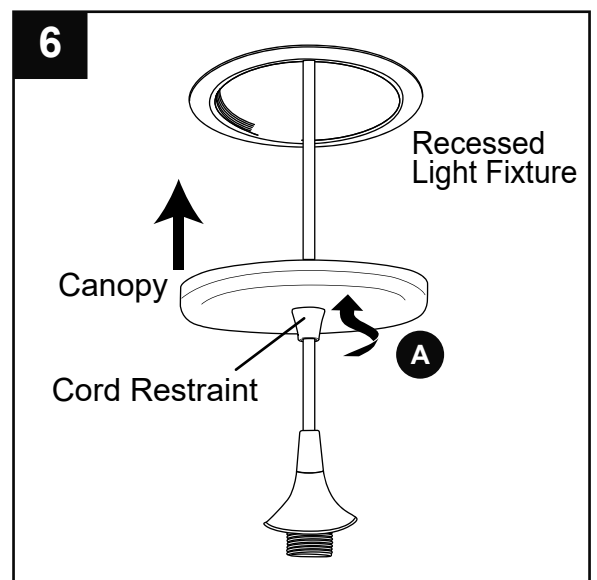
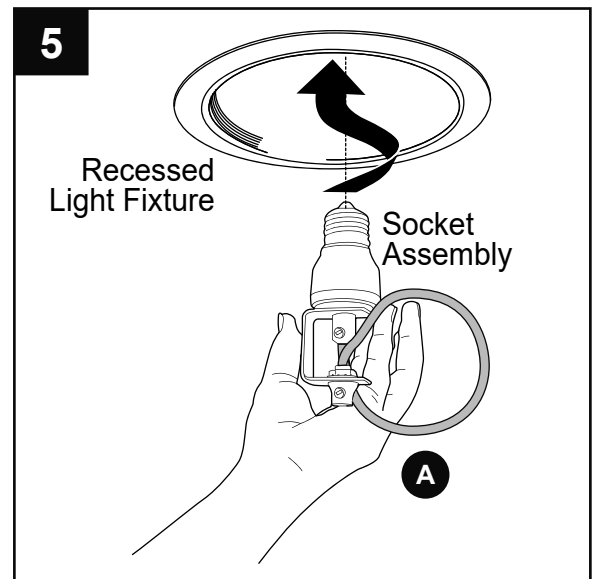
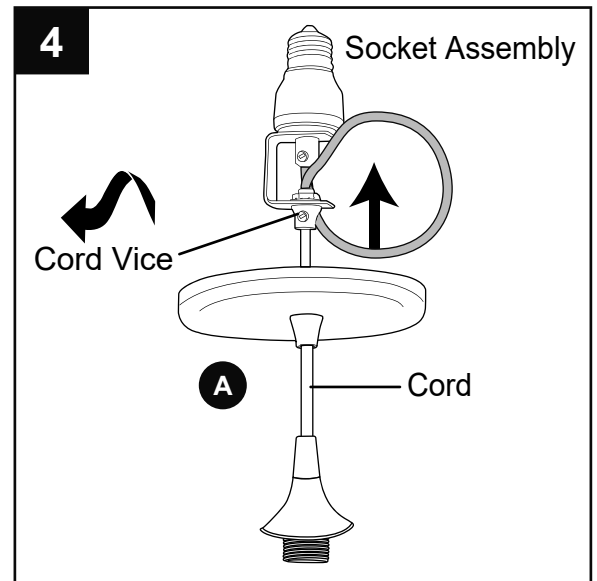
- Loosen cord vice on socket assembly with a screwdriver to adjust cord length. Pull cord through until at proper length, and then tighten cord vice with screwdriver to hold cord at desired length.

⚠ WARNING: Do not overtighten vice as it may damage the wires inside the cord.

- Screw socket assembly at top of fixture (A) into recessed light fixture socket.

- Lift canopy on fixture (A) to ceiling, making sure to arrange excess cord in canopy so that fixture (A) will fit flush to ceiling.

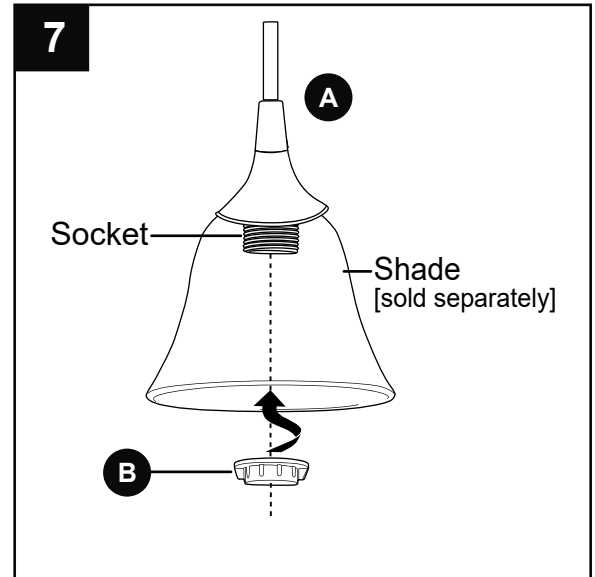
Tighten cord restraint BUT DO NOT OVERTIGHTEN.



ASSEMBLY INSTRUCTIONS

7. Remove socket ring (B) from socket on fixture (A). Attach shade (sold separately) with socket ring (B).

NOTE: Do not overtighten socket ring (B) as shade may crack or break.



8. Install one standard-base 60-watt max. incandescent bulb (not included) or CFL/LED equivalent. *Maximum wattage for fixture (A) is 60 watts--**PLEASE NOTE WARNINGS BELOW.**

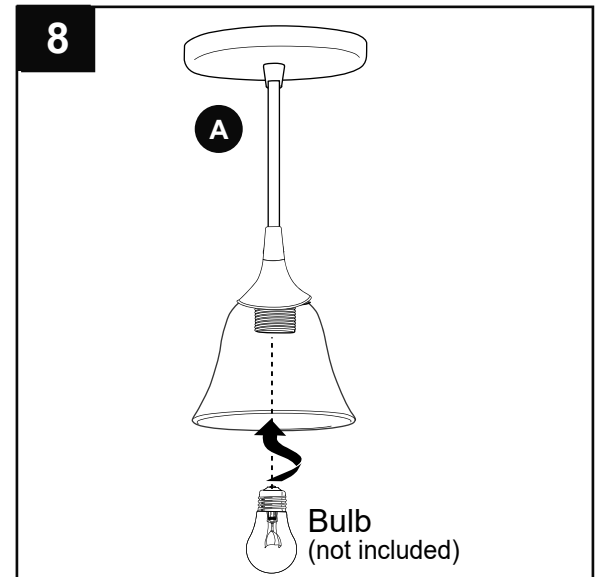
⚠ WARNING: If the maximum wattage for the recessed light fixture in which you are installing the fixture (A) is LESS than 60 watts, you may only use the maximum wattage indicated on that recessed light fixture. Failure to do so may result in fire or electrical shock.

⚠ WARNING: To reduce the risk of fire or electrical shock, DO NOT use a bulb with a higher wattage than 60 watts even if the recessed light fixture into which you are installing the fixture (A) may indicate that it can accept a higher maximum wattage.

⚠ CAUTION: When replacing bulb, please allow bulb and shade to cool before touching.

Restore power and test fixture (A).

If light does not function, refer to the TROUBLESHOOTING on the following page.



CARE AND MAINTENANCE

- Shut off main power supply. Wipe fixture with soft, damp cloth. Use mild cleaner to clean shade. Do not use an abrasive cleaner on fixture.

TROUBLESHOOTING

⚠ WARNING: Before beginning work, shut off the power supply to avoid electrical shock.

PROBLEM	POSSIBLE CAUSE	CORRECTIVE ACTION
Bulb will not light.	1. Bulb is burned out. 2. Power is OFF. 3. Faulty connection.	1. Replace light bulb. 2. Make sure power supply is ON. 3. Check wiring and all connections.
Fuse blows out or circuit breaker trips.	1. Crossed wires. 2. Power wire is grounding out.	1. Check wiring. 2. Check all connections.

WARRANTY

The distributor warrants all of its lighting fixtures against defects in materials and workmanship for one (1) year from the date of purchase. If within this period the product is found to be defective, take a copy of the bill of sale as a proof of purchase and the product in its original carton to the place of purchase. The distributor will, at its option, repair, replace or refund the purchase price to the consumer. All costs of installation and removal of the fixture is the responsibility of the consumer. This warranty does not cover fixtures becoming defective due to misuse, accidental damage or improper handling and/or installation and specifically excludes liability for direct, incidental or consequential damages. As some states do not allow exclusions of limitations on an implied warranty, the above exclusion and limitation may not apply. This warranty gives you specific rights and you may also have other rights which may vary from state to state.